

EMPLOYMENT ANALYSIS

The COVID-19 pandemic continues to have significant impacts on employment and businesses in the San Diego Region.

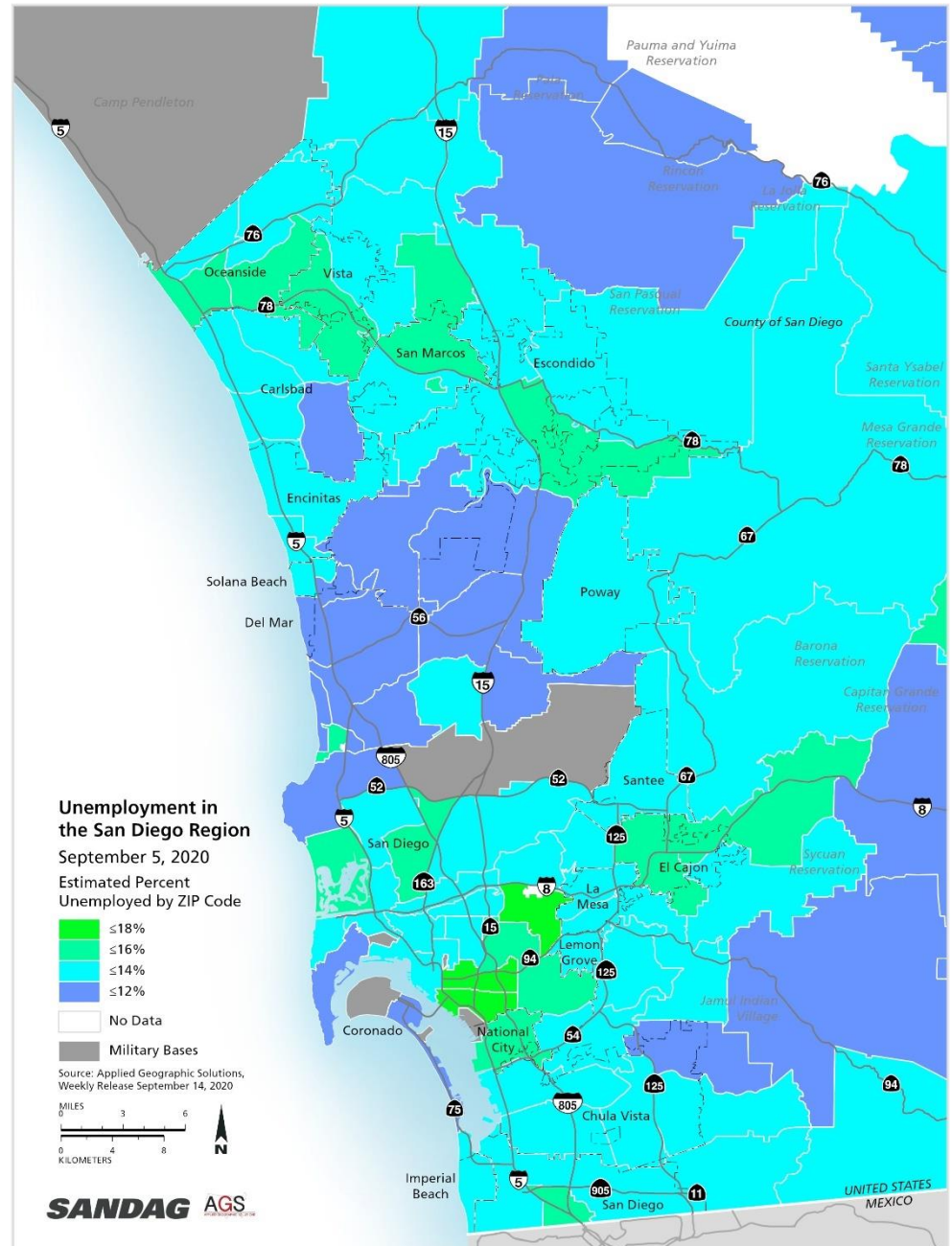
As of September 5, 2020, the region's unemployment rate is 13.3% with an estimated 226,000 unemployed workers. Pre-COVID, the region had just over 50,000 unemployed workers.

Unemployment rates have hovered between 13% and 16% for the past eight weeks since the roll back in reopening in mid-July. The new statewide guidelines make it challenging for many businesses to resume full operations. This has resulted in continued high levels of unemployed workers and dramatic declines in economic activity and consumer spending for the foreseeable future.

The areas experiencing the highest unemployment rates remain the same. Estimated unemployment rates for those ZIP Codes are:

- 92113 Logan Heights (17.6%)
- 92102 Golden Hill (16.5%)
- 92115 College (16.4%)
- 92105 City Heights (15.8%)
- 92054 Oceanside S (15.4%)
- 91950 National City (15.3%)
- 92083 Vista W (14.9%)
- 92081 Vista S (14.8%)
- 92173 San Ysidro (14.7%)
- 92025 Escondido S (14.6%)

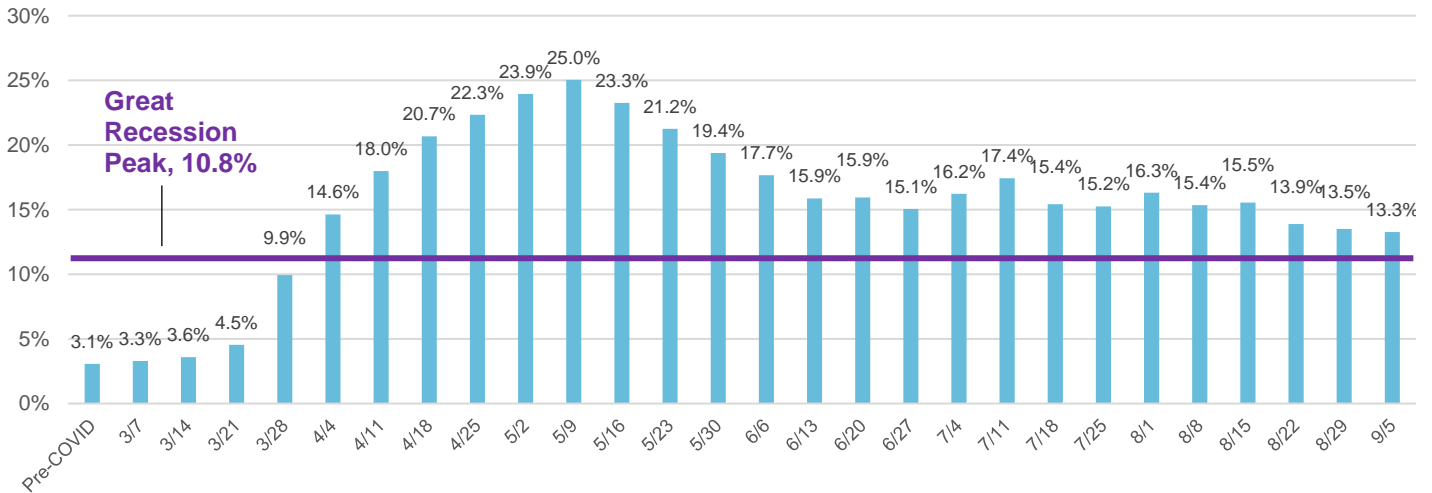
Figure 1: Estimated Unemployment Rate by ZIP Code as of September 5, 2020



Source: Applied Geographic Solutions, Inc., Thousand Oaks, California, Weekly Release September 14, 2020

Figure 2 represents the estimated unemployment rate in the region from week to week. These unemployment estimates are based on unemployment insurance claims, unemployment insurance payments, and unemployment statistics from the Bureau of Labor Statistics.

Figure 2: Estimated Unemployment Rate in the San Diego Region as of September 5, 2020



Source: Applied Geographic Solutions, Inc., Thousand Oaks, California, Weekly Release June 23, 2020 (for data until June 13), and Weekly Release September 14, 2020 (after June 13)

SANDAG will continue to monitor the San Diego regional economic recovery through various data.