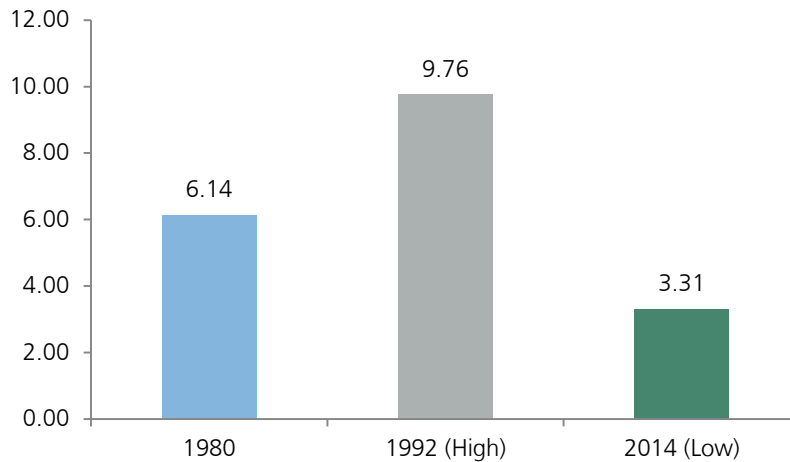


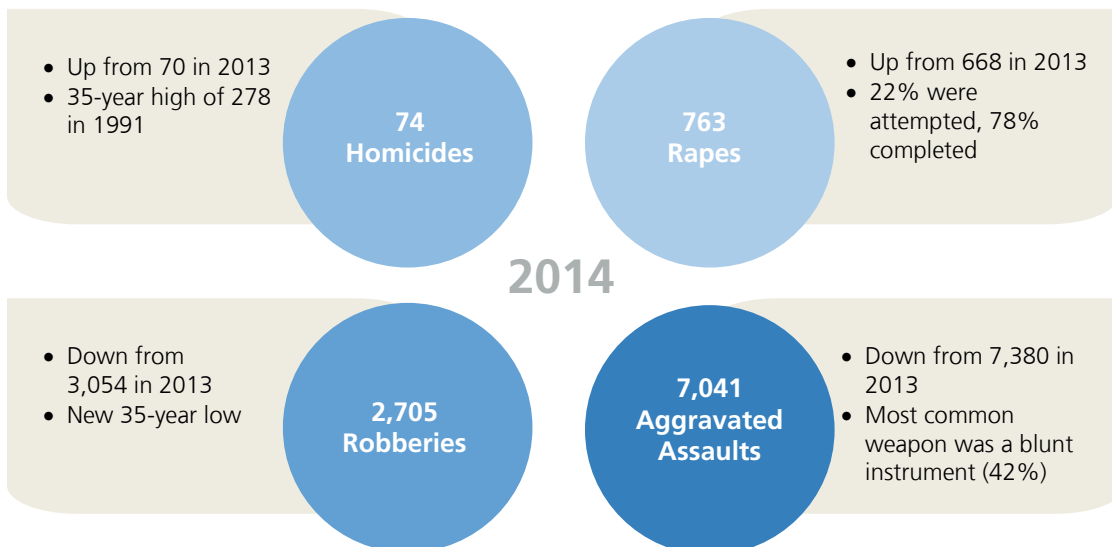
35 Years of Crime in the San Diego Region: 1980 Through 2014

Since the 1930s, local law enforcement agencies have used a standardized coding scheme to ensure that statistics regarding seven types of major crimes are captured in a reliable way across jurisdictions. Since the 1980s, SANDAG has worked with the local jurisdictions to compile their individual statistics to document how violent (homicide, rape, robbery, and aggravated assault) and property (burglary, larceny, and motor vehicle theft) crimes have changed over time and how they vary across municipalities. To account for changes in the population, crime rates per 1,000 resident population are shown to supplement crime numbers.

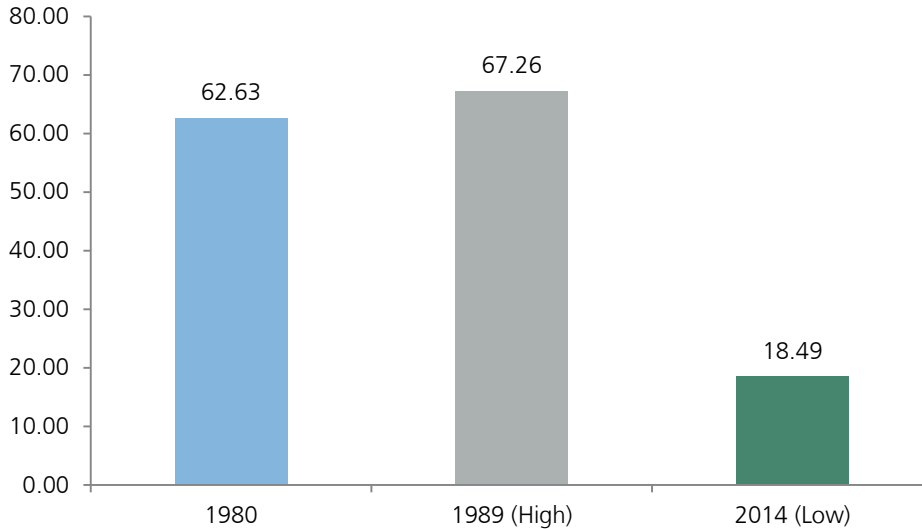
San Diego County's Violent Crime Rate at a 35-Year Low in 2014



Two Violent Crimes Up, Two Down, Over Past Year



San Diego County's Property Crime Rate also at a 35-Year Low in 2014



All Three Property Crimes at New 35-Year Lows in 2014

