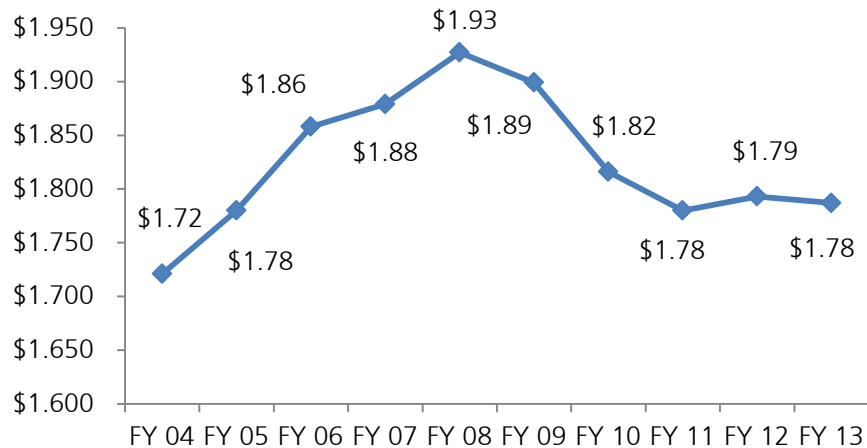


Arrest Rates Continue to Decrease in San Diego County in 2012, Public Safety Spending Also Down

In FY 2012-13 (FY13) \$1.78 billion were expended across the region for public safety functions, including law enforcement, corrections, court-related, prosecution, probation, and public defense. Compared to prior years, this figure was less than one percent lower than in FY 12 (\$1.79 billion) and six percent lower than FY 08 when it was at a ten-year high (\$1.93 billion) (Figure 1). Over the past five years, while public safety spending has been decreasing, the region's population grew four percent. As a result, dollars spent per resident in San Diego County also have decreased, down ten percent from five years ago (\$624) and four percent from one year ago (\$583) to \$561 in FY 13. Regionally, there were 1.29 sworn officers per 1,000 residents, an average which, although unchanged from last year, was much lower than the recent national average of 2.4.

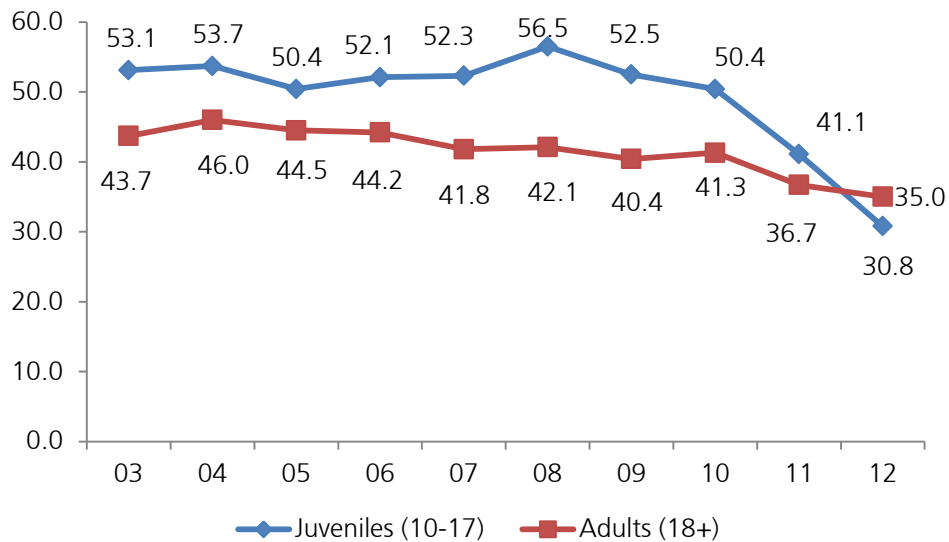
Figure 1
PUBLIC SAFETY EXPENDITURES FY 04 THROUGH FY 13



SOURCE: SANDAG; San Diego County and Cities Actual Expenditures

At the same time that spending has been decreasing, arrests also have been going down, a trend that may be related to some degree according to law enforcement executives. With almost half (48%) of public safety dollars in FY 13 spent on law enforcement activities and a decrease in staffing of 7 percent over the past five years (including 5% for sworn staff and 14% for non-sworn staff), including around 158 frozen sworn law enforcement positions across the region, local departments have had to strategically reduce activities (e.g., task force participation, school resource officers) to ensure that core patrol functions are met. Over the past five years, the arrest rates for both adults and juveniles have declined, with a larger decrease for juveniles than adults (46% versus 17%). As a result, arrest rates for adults were higher than those for juveniles for the first time, a trend also seen in other large Californian counties. Again, this change could be related to fewer law enforcement personnel and the focus of available resources on more serious offenses committed by adults.

Figure 2
ADULT AND JUVENILE ARREST RATES PER 1,000 POPULATION



SOURCE: SANDAG; California Department of Justice

More information about public safety spending and staffing, as well as regional arrests, can be found in two recently released SANDAG publications, "Public Safety Allocations in the San Diego Region: Expenditures and Staffing for Fiscal Year 2013" and "Arrests 2012: Law Enforcement Response to Crime in the San Diego Region", both of which are available on the SANDAG web site, www.sandag.org/cj and were produced by the Criminal Justice Clearinghouse.