



Crime in the San Diego Region Mid-Year 2012 Statistics

August 2012

Cynthia Burke, Ph.D.
Division Director



401 B Street
Suite 800
San Diego, CA 92101
(619) 699-1900

BOARD OF DIRECTORS



The 18 cities and county government are SANDAG serving as the forum for regional decision-making. SANDAG builds consensus; plans, engineers, and builds public transit; makes strategic plans; obtains and allocates resources; and provides information on a broad range of topics pertinent to the region's quality of life.

CHAIR

Hon. Jerome Stocks

FIRST VICE CHAIR

Hon. Jack Dale

SECOND VICE CHAIR

Hon. Jim Janney

EXECUTIVE DIRECTOR

Gary L. Gallegos

CITY OF CARLSBAD

Hon. Matt Hall, Mayor
(A) Hon. Ann Kulchin, Mayor Pro Tem
(A) Hon. Farrah Douglas, Councilmember

CITY OF CHULA VISTA

Hon. Cheryl Cox, Mayor
(A) Hon. Pamela Bensoussan, Councilmember
(A) Hon. Rudy Ramirez, Deputy Mayor

CITY OF CORONADO

Hon. Carrie Downey, Councilmember
(A) Hon. Al Ovrrom, Mayor Pro Tem
(A) Hon. Michael Woiwode, Councilmember

CITY OF DEL MAR

Hon. Carl Hilliard, Mayor
(A) Hon. Terry Sinnott, Deputy Mayor
(A) Hon. Mark Filanc, Councilmember

CITY OF EL CAJON

Hon. Mark Lewis, Mayor
(A) Hon. Bill Wells, Councilmember

CITY OF ENCINITAS

Hon. Jerome Stocks, Mayor
(A) Hon. Kristin Gaspar, Deputy Mayor
(A) Hon. Teresa Barth, Councilmember

CITY OF ESCONDIDO

Hon. Sam Abed, Mayor
(A) Hon. Marie Waldron, Councilmember
(A) Hon. Ed Gallo, Councilmember

CITY OF IMPERIAL BEACH

Hon. Jim Janney, Mayor
(A) Hon. Jim King, Councilmember
(A) Hon. Lorie Bragg, Councilmember

CITY OF LA MESA

Hon. Art Madrid, Mayor

(A) Hon. Ruth Sterling, Councilmember

CITY OF LEMON GROVE

Hon. Mary Teresa Sessom, Mayor
(A) Hon. Jerry Jones, Councilmember
(A) Hon. George Gastil, Mayor Pro Tem

CITY OF NATIONAL CITY

Hon. Ron Morrison, Mayor
(A) Hon. Rosalie Zarate, Councilmember
(A) Hon. Alejandra Sotelo-Solis, Vice Mayor

CITY OF OCEANSIDE

Hon. Jim Wood, Mayor
(A) Hon. Jack Feller, Councilmember
(A) Hon. Gary Felien, Councilmember

CITY OF POWAY

Hon. Don Higginson, Mayor
(A) Hon. Jim Cunningham, Deputy Mayor
(A) Hon. John Mullin, Councilmember

CITY OF SAN DIEGO

Hon. Jerry Sanders, Mayor
(A) Hon. Lorie Zapf, Councilmember
(A) Hon. David Alvarez, Councilmember
Hon. Anthony Young, Council President
(A) Hon. Todd Gloria, Councilmember
(A) Hon. Sherri Lightner, Councilmember

CITY OF SAN MARCOS

Hon. Jim Desmond, Mayor
(A) Hon. Hal Martin, Vice Mayor
(A) Hon. Rebecca Jones, Councilmember

CITY OF SANTEE

Hon. Jack Dale, Councilmember
(A) Hon. John Minto, Councilmember
(A) Hon. Rob McNelis, Vice Mayor

CITY OF SOLANA BEACH

Hon. Lesa Heebner, Councilmember
(A) Hon. Mike Nichols, Councilmember
(A) Hon. Dave Roberts, Deputy Mayor

CITY OF VISTA

Hon. Judy Ritter, Mayor
(A) Hon. David Cowles, Councilmember
(A) Hon. John Aguilera, Councilmember

COUNTY OF SAN DIEGO

Hon. Ron Roberts, Chair
(A) Hon. Greg Cox, Vice Chair (A) Hon. Pam Slater-Price, Supervisor
Hon. Bill Horn, Supervisor
(A) Hon. Dianne Jacob, Supervisor

ADVISORY MEMBERS

IMPERIAL COUNTY

Hon. John Renison, Supervisor, District 1
(A) Daniel Romero, Mayor, City of Calexico

CALIFORNIA DEPARTMENT OF TRANSPORTATION

Malcolm Dougherty, Director
(A) Laurie Berman, District 11 Director

METROPOLITAN TRANSIT SYSTEM

Harry Mathis, Chairman
(A) Hon. Al Ovrrom

NORTH COUNTY TRANSIT DISTRICT

Hon. Chris Orlando, Chairman
(A) Dave Roberts
(A) Mark Packard

U.S. DEPARTMENT OF DEFENSE

CAPT Clifford Maurer, USN, CEC,
Southwest Division Naval Facilities Engineering Command
(A) CAPT Allan Stratman, USN, CEC
Southwest Division Naval Facilities Engineering Command

SAN DIEGO UNIFIED PORT DISTRICT

Lou Smith, Chairman
(A) Lee Burdick, Commissioner

SAN DIEGO COUNTY WATER AUTHORITY

Javier Saunders, Director
(A) John Linden, Director

SOUTHERN CALIFORNIA TRIBAL CHAIRMEN'S ASSOCIATION

Hon. Edwin 'Thorpe' Romero
Barona Band of Mission Indians
Hon. Allen Lawson
San Pasqual Band of Diegueño Indians
(A) Robert Smith,
(Pala Band of Mission Indians)

MEXICO

Hon. Remedios Gómez-Arnau
Cónsul General of Mexico
Hon. Francisco J. Olivarría
Deputy Cónsul General of Mexico

As of 08/22/2012 2:59 PM

CRIME IN THE SAN DIEGO REGION MID-YEAR 2012 STATISTICS

INTRODUCTION

Since 1980, SANDAG has been compiling and reporting regional crime statistics for San Diego County and remains the only local source for regional statistics not available at the national level. This summary presents information regarding how many and what types of crimes were reported to local law enforcement in the first half of 2012 and how these numbers compare to prior years. These data are useful to local law enforcement agencies as they track the effectiveness of their prevention and response efforts on jurisdictional and regional crime rates.

As preliminary statistics have suggested, a greater number of crimes were reported to law enforcement in the San Diego region during the first half of 2012, compared to the first half of 2011. As Figure 1 and Table 3 show, the region's violent crime rate of 3.70 represented an eight percent increase from mid-year 2011. In terms of property crime, the 2012 mid-year rate of 21.38 represented a seven percent increase from mid-year 2011 (Figure 2 and Table 4). While these increases are the first after several consecutive decreases (five years for violent, seven years for property) and are being closely monitored by law enforcement, it is important to acknowledge that both rates are still the second lowest in the past ten years and it is too early to attribute these increases to any one cause or make assumptions regarding what annual crime statistics will eventually be.

VIOLENT CRIME

- A total of 5,808 Part I violent crimes were reported to local law enforcement agencies in the region between January and June 2012 (Tables 1 and 6), an average of almost 32 per day, compared to 29 per day during the first six months of 2011 (not shown). Part I violent crimes include homicide, rape, robbery, and aggravated assault.
- There were 61 homicides in the first half of 2012, the second consecutive mid-year increase and a jump from the 51 reported during the first half of 2011 (Tables 1 and 8).

HIGHLIGHTS

The region's mid-year violent crime rate increased eight percent from 2011 to 2012, with jumps in the numbers of reported homicides, rapes, robberies, and aggravated assaults. The region's mid-year property crime rate also increased (7%), with increases in all property crimes with the exception of non-residential burglaries.

While public safety officials are aware of these changes and are strategically addressing them through targeted enforcement, it is important to note that these 2012 mid-year crime rates are still lower than in any other year between 2003 and 2010 and that it is impossible to attribute the recent increases to any one cause.

- Analyses of data from local law enforcement agencies regarding motive in the 48 homicide cases where it could already be determined revealed that in 2012, arguments accounted for the majority of homicides (31%), followed by gang activity (27%), and domestic violence (15%). Other motives represented the remaining 27 percent. Compared to calendar year 2011, a greater percentage were attributable to gangs (up from 18%) and fewer were related to domestic violence (down from 31%) (not shown).
- The number of rapes reported across the region increased 26 percent to 376 during the first half of 2012 (Table 1). This increase from 298 in 2011 represented the first increase since mid-year 2007 to 2008 (Table 8). On January 6, 2012, the U.S. Department of Justice announced a new definition of rape that was more inclusive and includes any gender or victim or perpetrator instances in which the victim is incapable of giving consent because of temporary or permanent mental or physical incapacity. At least part of the increase in the number of rapes may be attributed to the use of this new definition.

- The number of robberies across the region also increased for the first time after four consecutive decreases. This increase from 1,445 in the first half of 2011 to 1,530 the first half of 2012 represented a six percent increase (Tables 1 and 8).
- The 3,841 aggravated assaults reported during the first six months of the year represented a nine percent increase from the prior year (Tables 1 and 8).
- Across the 19 jurisdictions, the number of violent crimes increased (since the same time period one year ago) in 10 jurisdictions, decreased in 5, 3 had numbers too small to calculate the percent change, and 1 had no change. The only jurisdictions with decreases were El Cajon, La Mesa, Chula Vista, Encinitas, and Poway, with decreases ranging from 4 percent to 25 percent (Table 6).

PROPERTY CRIME

- A total of 33,599 property crimes were reported to local law enforcement agencies in the first half of 2012 (Tables 1 and 7). Sixty-three percent (63%) were larcenies, 20 percent burglaries, and 17 percent motor vehicle thefts (not shown).
- The 6,840 burglaries reported in the San Diego region in the first half of 2012 represented an increase of 13 percent from mid-year 2011 (6,074). However, while residential burglaries increased 23 percent (from 3,751 to 4,607), non-residential burglaries were actually down by 4 percent (2,323 to 2,233) (Tables 1 and 8).
- The number of larcenies reported in the region mid-year 2012 (21,043) represented a seven percent increase from mid-year 2011 (19,675). Both petty theft (estimated value of items stolen \$400 and under) and grand theft increased (by 6% and 8%, respectively) (Tables 1 and 8)
- Following four consecutive decreases, the number of motor vehicle thefts increased by nine percent in the first half of 2012 (from 5,232 in 2011 to 5,716 in 2012) (Tables 1 and 8).

- Across the jurisdictions, the number of property crimes increased in 17 of the 19 jurisdictions. The only decreases were reported in Poway and Vista, each with a decrease of one percent (Table 7).

BACKGROUND

The ability for SANDAG to analyze data and produce reports on crime trends for the region relies upon a cooperative agreement with each local law enforcement agency. SANDAG obtains crime data from every agency on a monthly basis, enabling the agency to present regional crime data in a timely manner.

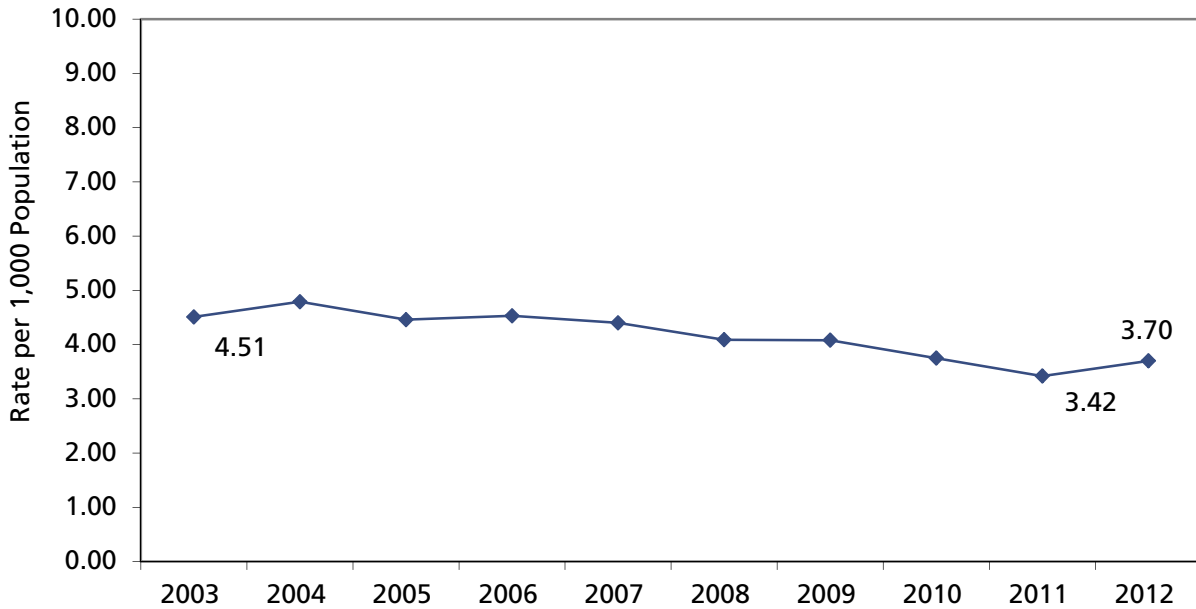
Crimes are categorized according to the FBI's standardized Uniform Crime Reporting (UCR) guidelines for law enforcement agencies across the country. Reported crimes are tallied in ARJIS according to the date of data entry, which may or may not reflect the day of occurrence. It should be noted that while local law enforcement agencies strive to tabulate their statistics in a timely fashion, data entry delays sometimes occur, which may affect statistics.

The mid-year crime rates per 1,000 residents are estimated by multiplying the number of crimes reported between January and June by two and dividing that number by the population which has been multiplied by 1,000.

The statistics presented in this CJ Bulletin include crime rates and numbers for San Diego County and individual jurisdictions for the first half of 2012. Comparisons are made to prior years. The number and type of crimes that are reported can be influenced by several factors, including the degree of opportunity to commit crimes in a given jurisdiction, which can be related to the amount of commercial land use and ease of access to the area.

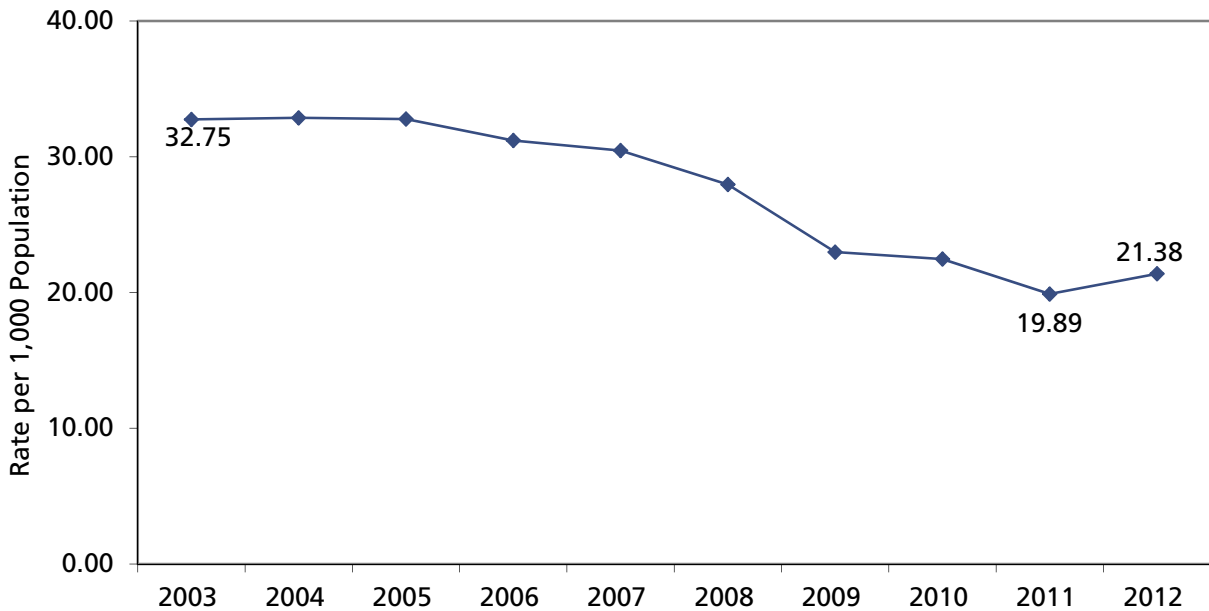
Crime statistics for January through December 2012 are expected to be available in April 2013. If you have any questions about these numbers, please contact the Criminal Justice Research Division at (619) 699-1900. For more information about the SANDAG Criminal Justice Clearinghouse, please visit our Web site at www.sandag.org/cj.

Figure 1
ANNUALIZED VIOLENT CRIME RATE
Mid-Year 2003-2012



NOTES: The violent crime rate includes reported homicides, rapes, robberies, and aggravated assaults.
 SOURCES: California Department of Finance; SANDAG Demographic/Economic Estimates, August 2012

Figure 2
ANNUALIZED PROPERTY CRIME RATE
Mid-Year 2003-2012



NOTES: The property crime rate includes reported burglaries, larceny thefts, and motor vehicle thefts.
 SOURCES: California Department of Finance; SANDAG Demographic/Economic Estimates, August 2012

Table 1
FBI INDEX OFFENSES
San Diego Region, Mid-Year 2008, 2011, and 2012

	2008	2011	2012	Change	
				2008-2012	2011-2012
Violent Crime					
Homicide	49	51	61	24%	20%
Rape	405	298	376	-7%	26%
Robbery	1,969	1,445	1,530	-22%	6%
Aggravated Assault	3,778	3,527	3,841	2%	9%
Total Violent Crimes	6,201	5,321	5,808	-6%	9%
Property Crime					
Burglary - Total	8,371	6,074	6,840	-18%	13%
Residential	4,693	3,751	4,607	-2%	23%
Non-Residential	3,678	2,323	2,233	-39%	-4%
Larceny - Total	23,845	19,675	21,043	-12%	7%
Over \$400	9,341	7,853	8,478	-9%	8%
\$400 and Under	14,504	11,822	12,565	-13%	6%
Motor Vehicle Theft	10,186	5,232	5,716	-44%	9%
Total Property Crimes	42,402	30,981	33,599	-21%	8%
TOTAL FBI INDEX	48,603	36,302	39,407	-19%	9%
TOTAL CCI	24,758	16,627	18,364	-26%	10%

NOTES: The FBI Index includes reported homicide, rape, robbery, and aggravated assault in the violent category and burglary, larceny, and motor vehicle theft in the property category. The California Crime Index (CCI) includes all FBI Index offenses except larceny.

SOURCE: SANDAG

Table 2
ANNUALIZED FBI INDEX CRIME RATES PER 1,000 POPULATION BY JURISDICTION
San Diego Region, Mid-Year 2008, 2011, and 2012

	2008	2011	2012	Change	
				2008-2012	2011-2012
Carlsbad	26.53	18.57	20.49	-23%	10%
Chula Vista	31.91	22.13	21.74	-32%	-2%
Coronado	28.49	19.38	21.39	-25%	10%
El Cajon	37.84	29.53	29.49	-22%	<-1%
Escondido	32.65	24.87	29.88	-8%	20%
La Mesa	40.39	31.47	32.08	-21%	2%
National City	48.69	36.74	36.90	-24%	<1%
Oceanside	29.93	25.07	26.25	-12%	5%
San Diego	35.90	25.41	27.25	-24%	7%
Sheriff - Total	24.03	17.31	19.46	-19%	12%
Del Mar	35.36	46.87	50.07	42%	7%
Encinitas	19.12	17.28	23.23	21%	34%
Imperial Beach	34.63	21.94	23.38	-32%	7%
Lemon Grove	31.10	20.83	21.79	-30%	5%
Poway	19.58	14.10	13.81	-29%	-2%
San Marcos	23.94	17.62	19.59	-18%	11%
Santee	24.75	18.89	22.25	-10%	18%
Solana Beach	28.33	19.65	20.92	-26%	6%
Vista	33.71	23.46	24.10	-29%	3%
Unincorporated	21.00	14.91	16.95	-19%	14%
4S Ranch	9.60	8.31	6.41	-32%	-23%
Alpine	22.74	16.16	18.59	-18%	15%
Fallbrook	22.44	15.91	16.57	-26%	4%
Lakeside	24.25	19.90	17.25	-29%	-13%
Ramona	17.05	14.29	20.48	20%	43%
Spring Valley	26.58	16.19	17.55	-34%	8%
Valley Center	24.77	16.50	20.72	-16%	26%
TOTAL	32.05	23.30	25.07	-22%	8%

NOTES: The FBI Crime Index includes homicide, rape, robbery, aggravated assault, burglary, larceny, and motor vehicle theft. "Sheriff-Total" includes the contract cities and the unincorporated area served by the San Diego County Sheriff's Department, as well as crime reported in the Sheriff's "other" category that includes the Sheriff's detention facilities, courts staffed by the Sheriff, and crimes reported to the Sheriff that were determined to have occurred in a city not served by the Sheriff or at a location for which jurisdiction could not be determined. "Unincorporated" includes 4S Ranch, Alpine, Fallbrook, Lakeside, Ramona, Spring Valley, and Valley Center, as well as the unincorporated areas for which crime data are not individually shown (Campo, Julian, Pine Valley, Ranchita, and the unincorporated areas of Encinitas, Imperial Beach, Lemon Grove, Poway, San Marcos, Santee, and Vista). The annualized crime rate per 1,000 population reflects the number of incidents reported in the first six months of the year, times two, divided by the population which has been multiplied by 1,000.

SOURCES: California Department of Finance; SANDAG Demographic/Economic Estimates, August 2012

Table 3
ANNUALIZED FBI INDEX VIOLENT CRIME RATES PER 1,000 POPULATION BY JURISDICTION
San Diego Region, Mid-Year 2008, 2011, and 2012

	2008	2011	2012	Change	
				2008-2012	2011-2012
Carlsbad	1.91	1.48	2.49	30%	68%
Chula Vista	3.55	2.74	2.26	-36%	-18%
Coronado	1.42	0.69	1.04	--	--
El Cajon	4.87	5.00	3.72	-24%	-26%
Escondido	3.72	3.17	4.20	13%	32%
La Mesa	4.20	3.97	3.09	-26%	-22%
National City	8.86	6.58	6.55	-26%	<-1%
Oceanside	4.73	3.58	3.90	-18%	9%
San Diego	4.67	3.79	4.11	-12%	8%
Sheriff - Total	3.29	3.03	3.47	5%	15%
Del Mar	1.43	1.91	3.34	--	--
Encinitas	1.82	2.27	2.12	16%	-7%
Imperial Beach	6.30	4.69	5.26	-17%	12%
Lemon Grove	5.61	5.19	6.09	9%	17%
Poway	1.81	2.25	2.15	19%	-4%
San Marcos	2.14	2.32	2.66	24%	15%
Santee	2.98	2.29	3.22	8%	41%
Solana Beach	3.76	2.78	1.85	--	--
Vista	5.00	4.14	5.18	4%	25%
Unincorporated	2.75	2.69	2.91	6%	8%
4S Ranch	0.78	0.80	0.11	--	--
Alpine	3.11	2.18	3.21	3%	47%
Fallbrook	1.90	2.70	2.87	51%	6%
Lakeside	3.87	3.54	3.90	1%	10%
Ramona	2.26	1.95	3.33	47%	71%
Spring Valley	4.43	3.94	4.42	<-1%	12%
Valley Center	3.65	4.47	4.13	13%	-8%
TOTAL	4.09	3.42	3.70	-10%	8%

NOTES: FBI Index violent crimes include homicide, rape, robbery, and aggravated assault. "Sheriff-Total" includes the contract cities and the unincorporated area served by the San Diego County Sheriff's Department, as well as crimes reported in the Sheriff's "other" category that includes the Sheriff's detention facilities, courts staffed by the Sheriff, and crimes reported to the Sheriff that were determined to have occurred in a city not served by the Sheriff or a location for which jurisdiction could not be determined. "Unincorporated" includes 4S Ranch, Alpine, Fallbrook, Lakeside, Ramona, Spring Valley, and Valley Center, as well as the unincorporated areas for which crime data are not individually shown (Campo, Julian, Pine Valley, Ranchita, and the unincorporated areas of Encinitas, Imperial Beach, Lemon Grove, Poway, San Marcos, Santee, and Vista). The annualized crime rate per 1,000 population reflects the number of incidents reported in the first six months of the year, times two, divided by the population which has been multiplied by 1,000. Percent changes are not presented if either comparison number used to compute the crime rate equals 30 or less.

SOURCES: California Department of Finance; SANDAG Demographic/Economic Estimates, August 2012

Table 4
ANNUALIZED FBI INDEX PROPERTY CRIME RATES PER 1,000 POPULATION BY JURISDICTION
San Diego Region, Mid-Year 2008, 2011, and 2012

	2008	2011	2012	Change	
				2008-2012	2011-2012
Carlsbad	24.62	17.09	18.00	-27%	5%
Chula Vista	28.36	19.39	19.48	-31%	<1%
Coronado	27.06	18.69	20.36	-25%	9%
El Cajon	32.96	24.52	25.78	-22%	5%
Escondido	28.92	21.70	25.67	-11%	18%
La Mesa	36.20	27.50	28.99	-20%	5%
National City	39.83	30.16	30.36	-24%	1%
Oceanside	25.20	21.48	22.35	-11%	4%
San Diego	31.24	21.62	23.14	-26%	7%
Sheriff - Total	20.73	14.28	15.98	-23%	12%
Del Mar	33.92	44.95	46.73	38%	4%
Encinitas	17.30	15.01	21.11	22%	41%
Imperial Beach	28.33	17.25	18.11	-36%	5%
Lemon Grove	25.49	15.64	15.70	-38%	<1%
Poway	17.77	11.85	11.66	-34%	-2%
San Marcos	21.80	15.30	16.92	-22%	11%
Santee	21.77	16.60	19.03	-13%	15%
Solana Beach	24.57	16.86	19.08	-22%	13%
Vista	28.71	19.33	18.92	-34%	-2%
Unincorporated	18.25	12.22	14.04	-23%	15%
4S Ranch	8.82	7.51	6.30	-29%	-16%
Alpine	19.63	13.98	15.37	-22%	10%
Fallbrook	20.54	13.21	13.70	-33%	4%
Lakeside	20.39	16.36	13.36	-34%	-18%
Ramona	14.79	12.33	17.15	16%	39%
Spring Valley	22.15	12.25	13.14	-41%	7%
Valley Center	21.13	12.03	16.59	-21%	38%
TOTAL FBI INDEX PROPERTY	27.96	19.89	21.38	-24%	7%

NOTES: FBI Index property crimes include burglary, larceny, and motor vehicle theft. "Sheriff-Total" includes the contract cities and the unincorporated area served by the San Diego County Sheriff's Department, as well as crimes reported in the Sheriff's "other" category that includes the Sheriff's detention facilities, courts staffed by the Sheriff, and crimes reported to the Sheriff that were determined to have occurred in a city not served by the Sheriff or a location for which jurisdiction could not be determined. "Unincorporated" includes 4S Ranch, Alpine, Fallbrook, Lakeside, Ramona, Spring Valley, and Valley Center, as well as the unincorporated areas for which crime data are not individually shown (Campo, Julian, Pine Valley, Ranchita, and the unincorporated areas of Encinitas, Imperial Beach, Lemon Grove, Poway, San Marcos, Santee, and Vista). The annualized crime rate per 1,000 population reflects the number of incidents reported in the first six months of the year, times two, divided by the population which has been multiplied by 1,000.

SOURCES: California Department of Finance; SANDAG Demographic/Economic Estimates, August 2012

Table 5
FBI INDEX CRIMES BY JURISDICTION
San Diego Region, Mid-year 2008, 2011, and 2012

	2008	2011	2012	Change	
				2008-2012	2011-2012
Carlsbad	1,359	988	1,103	-19%	12%
Chula Vista	3,762	2,722	2,711	-28%	<-1%
Coronado	300	226	248	-17%	10%
El Cajon	1,848	1,476	1,483	-20%	<1%
Escondido	2,298	1,803	2,182	-5%	21%
La Mesa	1,126	912	935	-17%	3%
National City	1,385	1,078	1,088	-21%	1%
Oceanside	2,485	2,105	2,222	-11%	6%
San Diego	22,969	16,642	18,004	-22%	8%
Sheriff - Total	10,035	7,469	8,468	-16%	13%
Del Mar	74	98	105	42%	7%
Encinitas	568	517	701	23%	36%
Imperial Beach	456	290	311	-32%	7%
Lemon Grove	388	265	279	-28%	5%
Poway	466	339	334	-28%	-1%
San Marcos	983	745	838	-15%	12%
Santee	648	511	608	-6%	19%
Solana Beach	181	127	136	-25%	7%
Vista	1,564	1,106	1,145	-27%	4%
Unincorporated	4,544	3,379	3,873	-15%	15%
4S Ranch	74	73	60	-19%	-18%
Alpine	314	230	266	-15%	16%
Fallbrook	555	413	433	-22%	5%
Lakeside	621	523	456	-27%	-13%
Ramona	287	256	369	29%	44%
Spring Valley	943	583	636	-33%	9%
Valley Center	265	203	256	-3%	26%
Other Sheriff	163	92	138	-15%	50%
California Highway Patrol	74	72	67	-9%	-7%
Calif. State University San Marcos	33	16	12	--	--
San Diego State University	352	269	291	-17%	8%
University of California San Diego	276	303	247	-11%	-18%
San Diego Harbor Police	277	203	266	-4%	31%
California State Parks	24	18	80	--	--
TOTAL FBI	48,603	36,302	39,407	-19%	9%

NOTES: The FBI Crime Index includes homicide, rape, robbery, aggravated assault, burglary, larceny, and motor vehicle theft. "Sheriff-Total" includes the contract cities and the unincorporated area served by the San Diego County Sheriff's Department, as well as crimes reported in the Sheriff's "other" category that includes the Sheriff's detention facilities, courts staffed by the Sheriff, and crimes reported to the Sheriff that were determined to have occurred in a city not served by the Sheriff or a location for which jurisdiction could not be determined. "Unincorporated" includes 4S Ranch, Alpine, Fallbrook, Lakeside, Ramona, Spring Valley, and Valley Center, as well as the unincorporated areas for which crime data are not individually shown (Campo, Julian, Pine Valley, Ranchita, and the unincorporated areas of Encinitas, Imperial Beach, Lemon Grove, Poway, San Marcos, Santee, and Vista). Percent changes are not presented if either comparison number equals 30 or less.

SOURCE: SANDAG

Table 6
FBI INDEX VIOLENT CRIMES BY JURISDICTION
San Diego Region, Mid-Year 2008, 2011, and 2012

	2008	2011	2012	Change	
				2008-2012	2011-2012
Carlsbad	98	79	134	37%	70%
Chula Vista	419	337	282	-33%	-16%
Coronado	15	8	12	--	--
El Cajon	238	250	187	-21%	-25%
Escondido	262	230	307	17%	33%
La Mesa	117	115	90	-23%	-22%
National City	252	193	193	-23%	0%
Oceanside	393	301	330	-16%	10%
San Diego	2,985	2,482	2,718	-9%	10%
Sheriff - Total	1,376	1,307	1,511	10%	16%
Del Mar	3	4	7	--	--
Encinitas	54	68	64	19%	-6%
Imperial Beach	83	62	70	-16%	13%
Lemon Grove	70	66	78	11%	18%
Poway	43	54	52	21%	-4%
San Marcos	88	98	114	30%	16%
Santee	78	62	88	13%	42%
Solana Beach	24	18	12	--	--
Vista	232	195	246	6%	26%
Unincorporated	596	609	665	12%	9%
4S Ranch	6	7	1	--	--
Alpine	43	31	46	7%	48%
Fallbrook	47	70	75	60%	7%
Lakeside	99	93	103	4%	11%
Ramona	38	35	60	58%	71%
Spring Valley	157	142	160	2%	13%
Valley Center	39	55	51	31%	-7%
Other Sheriff	105	71	115	10%	62%
California Highway Patrol	6	2	4	--	--
Calif. State University San Marcos	2	2	0	--	--
San Diego State University	25	8	20	--	--
University of California San Diego	4	3	3	--	--
San Diego Harbor Police	8	3	17	--	--
California State Parks	1	1	0	--	--
TOTAL VIOLENT OFFENSES	6,201	5,321	5,808	-6%	9%

NOTES: FBI Index violent crimes include homicide, rape, robbery, and aggravated assault. "Sheriff-Total" includes the contract cities and the unincorporated area served by the San Diego County Sheriff's Department, as well as crimes reported in the Sheriff's "other" category that includes the Sheriff's detention facilities, courts staffed by the Sheriff, and crimes reported to the Sheriff that were determined to have occurred in a city not served by the Sheriff or a location for which jurisdiction could not be determined. "Unincorporated" includes 4S Ranch, Alpine, Fallbrook, Lakeside, Ramona, Spring Valley, and Valley Center, as well as the unincorporated areas for which crime data are not individually shown (Campo, Julian, Pine Valley, Ranchita, and the unincorporated areas of Encinitas, Imperial Beach, Lemon Grove, Poway, San Marcos, Santee, and Vista). Percent changes are not presented if either comparison number equals 30 or less.

SOURCE: SANDAG

Table 7
FBI INDEX PROPERTY CRIMES BY JURISDICTION
San Diego Region, Mid-Year 2008, 2011, and 2012

	2008	2011	2012	Change	
				2008-2012	2011-2012
Carlsbad	1,261	909	969	-23%	7%
Chula Vista	3,343	2,385	2,429	-27%	2%
Coronado	285	218	236	-17%	8%
El Cajon	1,610	1,226	1,296	-20%	6%
Escondido	2,036	1,573	1,875	-8%	19%
La Mesa	1,009	797	845	-16%	6%
National City	1,133	885	895	-21%	1%
Oceanside	2,092	1,804	1,892	-10%	5%
San Diego	19,984	14,160	15,286	-24%	8%
Sheriff - Total	8,659	6,162	6,957	-20%	13%
Del Mar	71	94	98	38%	4%
Encinitas	514	449	637	24%	42%
Imperial Beach	373	228	241	-35%	6%
Lemon Grove	318	199	201	-37%	1%
Poway	423	285	282	-33%	-1%
San Marcos	895	647	724	-19%	12%
Santee	570	449	520	-9%	16%
Solana Beach	157	109	124	-21%	14%
Vista	1,332	911	899	-33%	-1%
Unincorporated	3,948	2,770	3,208	-19%	16%
4S Ranch	68	66	59	-13%	-11%
Alpine	271	199	220	-19%	11%
Fallbrook	508	343	358	-30%	4%
Lakeside	522	430	353	-32%	-18%
Ramona	249	221	309	24%	40%
Spring Valley	786	441	476	-39%	8%
Valley Center	226	148	205	-9%	39%
Other Sheriff	58	21	23	--	--
California Highway Patrol	68	70	63	-7%	-10%
Calif. State University San Marcos	31	14	12	--	--
San Diego State University	327	261	271	-17%	4%
University of California San Diego	272	300	244	-10%	-19%
San Diego Harbor Police	269	200	249	-7%	25%
California State Parks	23	17	80	--	--
TOTAL PROPERTY OFFENSES	42,402	30,981	33,599	-21%	8%

NOTES: FBI Index property crimes include, burglary, larceny, and motor vehicle theft. "Sheriff-Total" includes the contract cities and the unincorporated area served by the San Diego County Sheriff's Department, as well as crimes reported in the Sheriff's "other" category that includes the Sheriff's detention facilities, courts staffed by the Sheriff, and crimes reported to the Sheriff that were determined to have occurred in a city not served by the Sheriff or a location for which jurisdiction could not be determined. "Unincorporated" includes 4S Ranch, Alpine, Fallbrook, Lakeside, Ramona, Spring Valley, and Valley Center, as well as the unincorporated areas for which crime data are not individually shown (Campo, Julian, Pine Valley, Ranchita, and the unincorporated areas of Encinitas, Imperial Beach, Lemon Grove, Poway, San Marcos, Santee, and Vista). Percent changes are not presented if either comparison number equals 30 or less.

SOURCE: SANDAG

**Table 8
NUMBER OF CRIMES BY OFFENSE
San Diego Region, Mid-Year 2003 - 2012**

	Homicide	Rape	Robbery	Aggravated Assault	Total Violent Crime	Residential Burglary	Non-Residential Burglary	Total Burglary	Larceny Over \$400	Larceny \$400 & Under	Total Larceny	Motor Vehicle Theft	Total Property Crime	FBI Crime Index	Calif. Crime Index	As of August 2012 Population
2003	57	449	1,660	4,438	6,604	5,350	4,466	9,816	8,851	17,961	26,812	11,308	47,936	54,540	27,728	2,927,216
2004	71	415	1,715	4,867	7,068	5,150	3,951	9,101	9,566	18,721	28,287	11,160	48,548	55,616	27,329	2,953,703
2005	43	405	1,856	4,306	6,610	4,813	3,712	8,525	10,134	17,459	27,593	12,504	48,622	55,232	27,639	2,966,783
2006	66	364	2,074	4,237	6,741	4,553	3,855	8,408	9,951	16,172	26,123	11,901	46,432	53,173	27,050	2,976,492
2007	53	321	2,153	4,072	6,599	4,590	3,730	8,320	9,591	15,715	25,306	12,047	45,673	52,272	26,966	2,998,477
2008	49	405	1,969	3,778	6,201	4,693	3,678	8,371	9,341	14,504	23,845	10,186	42,402	48,603	24,758	3,032,689
2009	39	369	1,931	3,917	6,256	4,460	2,703	7,163	7,578	13,354	20,932	7,109	35,204	41,460	20,528	3,064,436
2010	31	336	1,679	3,759	5,805	4,598	2,361	6,959	8,023	13,315	21,338	6,474	34,771	40,576	19,238	3,095,313
2011	51	298	1,445	3,527	5,321	3,751	2,323	6,074	7,853	11,822	19,675	5,232	30,981	36,302	16,627	3,115,810
2012	61	376	1,530	3,841	5,808	4,607	2,233	6,840	8,478	12,565	21,043	5,716	33,599	39,407	18,364	3,143,429

NOTES: The FBI Crime Index includes homicide, rape, robbery, and aggravated assault in the violent category and burglary, larceny, and motor vehicle theft in the property category. The California Crime Index (CCI) includes all FBI Index crimes except larceny.

SOURCE: SANDAG

**Table 9
NUMBER OF CRIMES BY OFFENSE BY JURISDICTION
San Diego Region, Mid-Year 2008**

	Homicide	Rape	Robbery	Aggravated Assault	Residential Burglary	Non-Residential Burglary	Total Burglary	Larceny Over \$400	Larceny \$400 and Under	Total Larceny	Motor Vehicle Theft	Arson	FBI Crime Index	Calif. Crime Index
Carlsbad	1	14	28	55	113	115	228	369	555	924	109	4	1,359	435
Chula Vista	3	22	162	232	295	191	486	700	1,116	1,816	1,041	13	3,762	1,946
Coronado	0	2	5	8	28	29	57	70	140	210	18	2	300	90
El Cajon	1	19	88	130	106	140	246	312	644	956	408	12	1,848	892
Escondido	3	20	90	149	195	205	400	425	789	1,214	422	7	2,298	1,084
La Mesa	0	8	57	52	87	69	156	242	420	662	191	4	1,126	464
National City	0	8	94	150	64	146	210	159	334	493	430	2	1,385	892
Oceanside	5	24	88	276	285	106	391	427	968	1,395	306	15	2,485	1,090
San Diego	26	178	1,004	1,777	2,235	1,469	3,704	4,390	6,475	10,865	5,415	81	22,969	12,104
Sheriff-Total	10	101	339	926	1,254	1,153	2,407	1,898	2,633	4,531	1,721	38	10,035	5,504
Del Mar	0	0	1	2	7	14	21	27	18	45	5	1	74	29
Encinitas	0	4	13	37	51	80	131	156	182	338	45	1	568	230
Imperial Beach	0	7	32	44	54	29	83	58	105	163	127	6	456	293
Lemon Grove	0	7	29	34	57	55	112	27	85	112	94	1	388	276
Poway	0	4	12	27	51	62	113	112	157	269	41	1	466	197
San Marcos	1	5	25	57	85	150	235	186	307	493	167	1	983	490
Santee	1	6	23	48	39	70	109	129	243	372	89	1	648	276
Solana Beach	0	1	5	18	20	43	63	56	25	81	13	2	181	100
Vista	0	20	80	132	227	194	421	223	431	654	257	5	1,564	910
Unincorporated	8	44	118	426	658	452	1,110	914	1,060	1,974	864	19	4,544	2,570
4S Ranch	0	0	1	5	9	12	21	17	20	37	10	0	74	37
Alpine	0	5	7	31	46	24	70	70	75	145	56	1	314	169
Fallbrook	2	4	9	32	68	87	155	127	174	301	52	1	555	254
Lakeside	4	5	11	79	51	54	105	136	183	319	98	0	621	302
Ramona	0	4	8	26	25	36	61	58	97	155	33	0	287	132
Spring Valley	1	11	38	107	143	78	221	122	165	287	278	0	943	656
Valley Center	0	4	9	26	41	36	77	53	50	103	46	1	265	162
Other Sheriff	0	3	1	101	5	4	9	10	20	30	19	0	163	133
California Highway Patrol	0	0	0	6	1	2	3	0	7	7	58	0	74	67
Calif. State University San Marcos	0	1	0	1	0	5	5	5	21	26	0	0	33	7
San Diego State University	0	5	9	11	14	27	41	53	180	233	53	1	352	119
University of California San Diego	0	1	1	2	15	11	26	110	122	232	14	4	276	44
San Diego Harbor Police	0	2	3	3	0	9	9	162	98	260	0	0	277	17
California State Parks	0	0	1	0	1	1	2	19	2	21	0	1	24	3
TOTAL	49	405	1,969	3,778	4,693	3,678	8,371	9,341	14,504	23,845	10,186	184	48,603	24,758

NOTES: The FBI Crime Index includes homicide, rape, robbery, and aggravated assault in the violent category and burglary, larceny, and motor vehicle theft in the property category. The California Crime Index (CCI) includes all FBI Index crimes except larceny. "Sheriff-Total" includes the contract cities and the unincorporated area served by the Sheriff, as well as crimes reported in the Sheriff's "other" category that includes the Sheriff's detention facilities, courts staffed by the Sheriff, and crimes reported to the Sheriff that occurred in a city not served by the Sheriff or a location for which jurisdiction could not be determined. Unincorporated statistics have also been updated to exclude crimes now categorized in the Sheriff's "other" category.

SOURCE: SANDAG

**Table 10
NUMBER OF CRIMES BY OFFENSE BY JURISDICTION
San Diego Region, Mid-Year 2011**

	Homicide	Rape	Robbery	Aggravated Assault	Residential Burglary	Non-Residential Burglary	Total Burglary	Larceny Over \$400	Larceny \$400 and Under	Total Larceny	Motor Vehicle Theft	Arson	FBI Crime Index	Calif. Crime Index
Carlsbad	3	4	13	59	139	63	202	258	382	640	67	1	988	348
Chula Vista	5	14	115	203	211	137	348	536	1,111	1,647	390	15	2,722	1,075
Coronado	0	0	3	5	20	10	30	54	108	162	26	0	226	64
El Cajon	0	20	93	137	131	122	253	264	488	752	221	10	1,476	724
Escondido	2	12	73	143	130	80	210	396	684	1,080	283	7	1,803	723
La Mesa	1	6	48	60	71	81	152	153	385	538	107	3	912	374
National City	1	6	64	122	42	95	137	158	358	516	232	3	1,078	562
Oceanside	4	30	84	183	284	82	366	430	865	1,295	143	12	2,105	810
San Diego	25	130	688	1,639	1,798	987	2,785	3,757	4,828	8,585	2,790	82	16,642	8,057
Sheriff-Total	10	71	261	965	911	627	1,538	1,520	2,207	3,727	897	29	7,469	3,742
Del Mar	0	0	0	4	7	9	16	40	32	72	6	0	98	26
Encinitas	0	5	10	53	83	34	117	139	157	296	36	0	517	221
Imperial Beach	0	2	9	51	44	9	53	36	75	111	64	1	290	179
Lemon Grove	0	1	17	48	29	21	50	35	63	98	51	0	265	167
Poway	0	5	8	41	30	37	67	81	119	200	18	1	339	139
San Marcos	0	4	31	63	67	73	140	142	280	422	85	4	745	323
Santee	1	2	20	39	38	49	87	104	202	306	56	2	511	205
Solana Beach	0	1	6	11	19	14	33	34	36	70	6	0	127	57
Vista	0	11	57	127	104	100	204	180	373	553	154	6	1,106	553
Unincorporated	9	37	103	460	489	276	765	726	859	1,585	420	15	3,379	1,794
4S Ranch	0	1	3	3	14	7	21	23	18	41	4	0	73	32
Alpine	0	2	3	26	32	13	45	65	67	132	22	1	230	98
Fallbrook	1	6	12	51	52	30	82	91	143	234	27	4	413	179
Lakeside	3	3	17	70	60	30	90	128	139	267	73	0	523	256
Ramona	0	2	5	28	25	39	64	54	74	128	29	0	256	128
Spring Valley	1	5	30	106	85	49	134	73	106	179	128	0	583	404
Valley Center	0	3	7	45	21	19	40	43	49	92	16	1	203	111
Other Sheriff	0	3	0	68	1	5	6	3	11	14	1	0	92	78
California Highway Patrol	0	0	0	2	0	1	1	8	19	27	42	0	72	45
Calif. State University San Marcos	0	0	1	1	0	3	3	6	5	11	0	0	16	5
San Diego State University	0	3	1	4	8	12	20	71	149	220	21	0	269	49
University of California San Diego	0	2	0	1	4	18	22	100	165	265	13	3	303	38
San Diego Harbor Police	0	0	1	2	2	3	5	136	59	195	0	0	203	8
California State Parks	0	0	0	1	0	2	2	6	9	15	0	0	18	3
TOTAL	51	298	1,445	3,527	3,751	2,323	6,074	7,853	11,822	19,675	5,232	165	36,302	16,627

NOTES: The FBI Crime Index includes homicide, rape, robbery, and aggravated assault in the violent category and burglary, larceny, and motor vehicle theft in the property category. The California Crime Index (CCI) includes all FBI Index crimes except larceny. "Sheriff-Total" includes the contract cities and the unincorporated area served by the Sheriff, as well as crimes reported in the Sheriff's "other" category that includes the Sheriff's detention facilities, courts staffed by the Sheriff, and crimes reported to the Sheriff that occurred in a city not served by the Sheriff or a location for which jurisdiction could not be determined. Unincorporated statistics have also been updated to exclude crimes now categorized in the Sheriff's "other" category.

SOURCE: SANDAG

**Table 11
NUMBER OF CRIMES BY OFFENSE BY JURISDICTION
San Diego Region, Mid-Year 2012**

	Homicide	Rape	Robbery	Aggravated Assault	Residential Burglary	Non-Residential Burglary	Total Burglary	Larceny Over \$400	Larceny \$400 and Under	Total Larceny	Motor Vehicle Theft	Arson	FBI Crime Index	Calif. Crime Index
Carlsbad	0	14	18	102	150	83	233	295	381	676	60	3	1,103	427
Chula Vista	4	16	112	150	302	131	433	529	973	1,502	494	14	2,711	1,209
Coronado	3	0	0	9	42	20	62	69	97	166	8	2	248	82
El Cajon	1	15	68	103	149	106	255	250	584	834	207	7	1,483	649
Escondido	3	18	98	188	289	101	390	357	793	1,150	335	10	2,182	1,032
La Mesa	0	4	38	48	124	46	170	211	365	576	99	8	935	359
National City	4	12	87	90	67	119	186	132	391	523	186	18	1,088	565
Oceanside	4	25	75	226	301	62	363	436	866	1,302	227	10	2,222	920
San Diego	26	172	726	1,794	1,859	923	2,782	4,112	5,259	9,371	3,133	86	18,004	8,633
Sheriff-Total	16	91	295	1,109	1,300	611	1,911	1,674	2,453	4,127	919	25	8,468	4,341
Del Mar	0	1	0	6	16	12	28	44	22	66	4	0	105	39
Encinitas	0	6	9	49	91	44	135	192	272	464	38	2	701	237
Imperial Beach	1	4	12	53	38	14	52	51	97	148	41	0	311	163
Lemon Grove	1	9	23	45	33	12	45	36	83	119	37	1	279	160
Poway	0	2	18	32	39	32	71	84	108	192	19	2	334	142
San Marcos	1	5	28	80	115	80	195	144	293	437	92	0	838	401
Santee	1	6	18	63	58	40	98	107	256	363	59	0	608	245
Solana Beach	0	0	4	8	19	15	34	48	37	85	5	0	136	51
Vista	0	17	74	155	127	91	218	186	345	531	150	2	1,145	614
Unincorporated	12	37	105	511	762	269	1,031	781	930	1,711	466	18	3,873	2,162
4S Ranch	0	0	0	1	8	8	16	21	17	38	5	0	60	22
Alpine	0	2	4	40	37	14	51	86	61	147	22	0	266	119
Fallbrook	1	4	9	61	64	39	103	93	122	215	40	0	433	218
Lakeside	1	2	10	90	60	18	78	84	133	217	58	0	456	239
Ramona	1	4	11	44	89	42	131	61	98	159	19	0	369	210
Spring Valley	2	12	35	111	120	62	182	85	108	193	101	0	636	443
Valley Center	0	1	3	47	30	13	43	72	57	129	33	0	256	127
Other Sheriff	0	4	4	107	2	2	4	1	10	11	8	0	138	127
California Highway Patrol	0	0	0	4	1	0	1	10	23	33	29	0	67	34
Calif. State University San Marcos	0	0	0	0	0	4	4	0	7	7	1	0	12	5
San Diego State University	0	7	8	5	21	10	31	68	165	233	7	0	291	58
University of California San Diego	0	1	1	1	2	7	9	88	136	224	11	0	247	23
San Diego Harbor Police	0	1	4	12	0	6	6	181	62	243	0	0	266	23
California State Parks	0	0	0	0	0	4	4	66	10	76	0	0	80	4
TOTAL	61	376	1,530	3,841	4,607	2,233	6,840	8,478	12,565	21,043	5,716	183	39,407	18,364

NOTES: The FBI Crime Index includes homicide, rape, robbery, and aggravated assault in the violent category and burglary, larceny, and motor vehicle theft in the property category. The California Crime Index (CCI) includes all FBI Index crimes except larceny. "Sheriff-Total" includes the contract cities and the unincorporated area served by the Sheriff, as well as crimes reported in the Sheriff's "other" category that includes the Sheriff's detention facilities, courts staffed by the Sheriff, and crimes reported to the Sheriff that occurred in a city not served by the Sheriff or a location for which jurisdiction could not be determined. Unincorporated statistics have also been updated to exclude crimes now categorized in the Sheriff's "other" category.

SOURCE: SANDAG

**Table 12
POPULATION BY JURISDICTION
San Diego Region, 2008, 2011, and 2012**

	2008	2011	2012	Change	
				2008-2012	2011-2012
Carlsbad	102,452	106,403	107,674	5%	1%
Chula Vista	235,767	245,987	249,382	6%	1%
Coronado	21,063	23,329	23,187	10%	-1%
El Cajon	97,684	99,981	100,562	3%	1%
Escondido	140,785	144,998	146,064	4%	1%
La Mesa	55,753	57,969	58,296	5%	1%
National City	56,889	58,688	58,967	4%	<1%
Oceanside	166,064	167,943	169,319	2%	1%
San Diego	1,279,505	1,309,784	1,321,315	3%	1%
Sheriff - Total	835,280	863,077	870,491	4%	1%
Del Mar	4,186	4,182	4,194	<1%	<1%
Encinitas	59,411	59,827	60,346	2%	1%
Imperial Beach	26,335	26,437	26,609	1%	1%
Lemon Grove	24,949	25,445	25,603	3%	1%
Poway	47,596	48,088	48,382	2%	1%
San Marcos	82,116	84,586	85,569	4%	1%
Santee	52,367	54,102	54,643	4%	1%
Solana Beach	12,780	12,928	13,000	2%	1%
Vista	92,793	94,269	95,036	2%	1%
Unincorporated	432,747	453,213	457,109	6%	1%
4S Ranch	15,421	17,567	18,719	21%	7%
Alpine	27,615	28,465	28,624	4%	1%
Fallbrook	49,474	51,922	52,251	6%	1%
Lakeside	51,209	52,571	52,857	3%	1%
Ramona	33,671	35,836	36,037	7%	1%
Spring Valley	70,959	72,029	72,466	2%	1%
Valley Center	21,394	24,609	24,713	16%	<1%
Camp Pendleton	41,447	37,651	38,172	-8%	1%
TOTAL	3,032,689	3,115,810	3,143,429	4%	1%

NOTES: "Sheriff-Total" includes contract cities and the unincorporated area served by the San Diego County Sheriff's Department. The Camp Pendleton population is excluded from Sheriff's unincorporated area and included in the region total. "Unincorporated" includes 4S Ranch, Alpine, Fallbrook, Lakeside, Ramona, Spring Valley, and Valley Center, as well as the unincorporated areas not shown (Campo, Julian, Pine Valley, Ranchita, and the unincorporated areas of Encinitas, Imperial Beach, Lemon Grove, Poway, San Marcos, Santee, and Vista).

SOURCES: California Department of Finance; SANDAG Demographic/Economic Estimates, August 2012