



Crime in the San Diego Region Mid-Year 2006 Statistics

October 2006

Cynthia Burke, Ph.D.
Division Director



401 B Street
Suite 800
San Diego, CA 92101
(619) 699-1900

BOARD OF DIRECTORS



The 18 cities and county government are SANDAG serving as the forum for regional decision-making. SANDAG builds consensus; plans, engineers, and builds public transit; makes strategic plans; obtains and allocates resources; and provides information on a broad range of topics pertinent to the region's quality of life.

CHAIR: Hon. Mickey Cafagna
FIRST VICE CHAIR: Hon. Mary Teresa Sessom
SECOND VICE CHAIR: Hon. Lori Holt Pfeiler
EXECUTIVE DIRECTOR: Gary L. Gallegos

CITY OF CARLSBAD

Hon. Matt Hall, Mayor Pro Tem
(A) Hon. Bud Lewis, Mayor
(A) Hon. Ann Kulchin, Councilmember

CITY OF CHULA VISTA

Hon. Steve Padilla, Mayor
(A) Hon. Jerry Rindone, Councilmember
(A) Hon. John McCann, Deputy Mayor

CITY OF CORONADO

Hon. Phil Monroe, Councilmember
(A) Hon. Frank Tierney, Councilmember
(A) Hon. Carrie Downey, Councilmember

CITY OF DEL MAR

Hon. Crystal Crawford, Mayor
(A) Hon. David Druker, Councilmember
(A) Hon. Henry Abarbanel, Councilmember

CITY OF EL CAJON

Hon. Mark Lewis, Mayor
(A) Hon. Jillian Hanson-Cox, Councilmember

CITY OF ENCINITAS

Hon. Christy Guerin, Mayor
(A) Hon. Jerome Stocks, Councilmember

CITY OF ESCONDIDO

Hon. Lori Holt Pfeiler, Mayor
(A) Hon. Ed Gallo, Mayor Pro Tem
(A) Hon. Ron Newman, Councilmember

CITY OF IMPERIAL BEACH

Hon. Patricia McCoy, Councilmember
(A) Hon. Diane Rose, Mayor
(A) Hon. Mayda Winter, Councilmember

CITY OF LA MESA

Hon. Art Madrid, Mayor
(A) Hon. Barry Jantz, Councilmember
(A) Hon. David Allan, Vice Mayor

CITY OF LEMON GROVE

Hon. Mary Teresa Sessom, Mayor
(A) Hon. Jerry Jones, Councilmember
(A) Hon. Jerry Selby, Councilmember

CITY OF NATIONAL CITY

Hon. Ron Morrison, Vice Mayor
(A) Hon. Frank Parra, Councilmember
(A) Hon. Louie Natividad, Councilmember

CITY OF OCEANSIDE

Hon. Shari Mackin, Deputy Mayor
(A) Hon. Esther Sanchez, Councilmember
(A) Hon. Jim Wood, Mayor

CITY OF POWAY

Hon. Mickey Cafagna, Mayor
(A) Hon. Robert Emery, Councilmember
(A) Hon. Don Higginson, Councilmember

CITY OF SAN DIEGO

Hon. Jerry Sanders, Mayor
Hon. Jim Madaffer, Councilmember
(A) Hon. Scott Peters, Council President

CITY OF SAN MARCOS

Hon. Pia Harris-Ebert, Vice Mayor
(A) Hon. Hal Martin, Councilmember
(A) Hon. Corky Smith, Mayor

CITY OF SANTEE

Hon. Jack Dale, Councilmember
(A) Hon. Hal Ryan, Councilmember
(A) Hon. Randy Voepel, Mayor

CITY OF SOLANA BEACH

Hon. Joe Kellejian, Councilmember
(A) Hon. Lesa Heebner, Deputy Mayor
(A) Hon. David Powell, Mayor

CITY OF VISTA

Hon. Judy Ritter, Mayor Pro Tem
(A) Hon. Bob Campbell, Councilmember
(A) Hon. Steve Gronke, Councilmember

COUNTY OF SAN DIEGO

Hon. Bill Horn, Chairman
(A) Hon. Ron Roberts, Vice Chairman

IMPERIAL COUNTY

(Advisory Member)
Hon. Victor Carrillo, Chairman
(A) Hon. David Ouzan, Councilmember

CALIFORNIA DEPARTMENT OF TRANSPORTATION

(Advisory Member)
Will Kempton, Director
(A) Pedro Orso-Delgado, District 11 Director

METROPOLITAN TRANSIT SYSTEM

(Advisory Member)
Harry Mathis, Chairman
(A) Hon. Jerry Rindone, Vice Chairman
(A) Hon. Bob Emery, Board Member

NORTH COUNTY TRANSIT DISTRICT

(Advisory Member)
Hon. Jerome Stocks, Chairman
(A) Hon. Lesa Heebner, Planning Committee Chair
(A) Hon. Norine Sigafoose, Monitoring Committee Chair

U.S. DEPARTMENT OF DEFENSE

(Advisory Member)
CAPT Michael Giorgione, USN, CEC
Commanding Officer, Southwest Division
Naval Facilities Engineering Command
(A) CAPT Steve Wirsching, USN, CEC
Executive Officer, Southwest Division
Naval Facilities Engineering Command

SAN DIEGO UNIFIED PORT DISTRICT

(Advisory Member)
Vacant
(A) Michael Bixler, Commissioner

SAN DIEGO COUNTY WATER AUTHORITY

(Advisory Member)
Marilyn Dailey, Commissioner
(A) Mark Muir, Commissioner

MEXICO

(Advisory Member)
Hon. Luis Cabrera C.
Consulate General of Mexico

As of September 22, 2006

CRIME IN THE SAN DIEGO REGION MID-YEAR 2006 STATISTICS

INTRODUCTION

Since 1980, SANDAG has been compiling and reporting regional crime statistics for San Diego County. This summary presents information regarding how many and what types of crimes were reported to local law enforcement in the first half of 2006 and how these numbers compare to prior years. These data are useful to local law enforcement agencies as they track the effectiveness of their prevention and response efforts on regional crime rates.

As the following tables, figures, and highlights show, the overall violent crime rate was relatively stable (1% increase) in the first-half of 2006, compared to the same period in 2005, but the property crime rate decreased by five percent. With property crime accounting for almost nine in every ten reported crimes, this recent decrease in larcenies and motor vehicle thefts reflects the successful coordinated efforts of local jurisdictions. However, the higher number of homicides and robberies in 2006 are an issue of concern for local law enforcement agencies, as they are for a number of other jurisdictions around the country. Chula Vista Police Chief Richard Emerson, on behalf of the region's chiefs and Sheriff, notes that local law enforcement agencies are working together, as well as with other local agencies and groups, to take immediate action to address increased gang activity and violence in our communities.

VIOLENT CRIME

- A total of 6,740 Part I violent crimes were reported to local law enforcement agencies in the region between January and June 2006 (Table 1), an average of

about 37 per day (not shown). Part I violent crimes include homicide, rape, robbery, and assault.

- While the 2006 mid-year violent crime rate (4.40)¹ was slightly higher than it was in 2005 (4.35), it was considerably lower than it was ten years ago (6.60) (Figure 1).
- There were 65 homicides in the first half of 2006, an increase from 43 during the first six months of 2005 (Table 1), and a return to higher mid-year numbers that occurred in 2003 (57) and 2004 (71) (Table 8). In 2005, 44 percent of homicides occurred in the first half of the year (not shown).
- The number of robberies in the region increased over a one-year period (12%), as well as over the past five years (33%). In comparison, the number of rapes reported regionwide decreased ten percent from 2005, and the number of aggravated assaults decreased two percent. The number of rapes and assaults also was down, over the past five years.
- About two-thirds (65%) of the region's law enforcement agencies reported a higher mid-year violent crime rate in 2006, compared to 2005, and 35 percent had a lower rate (Table 3).² The seven areas with a lower violent crime rate included El Cajon, Fallbrook, San Diego, Santee, Spring Valley, Valley Center, and other unincorporated jurisdictions.

¹ Crime rates per 1,000 population are shown to two decimal places, rather than one (as in previous years), to reflect a greater degree of precision when presenting rate changes.

² Four agencies had fewer than 30 violent crimes reported in one of the comparison years and are not included in these statistics.

PROPERTY CRIME

- A total of 46,426 property crimes were reported to local law enforcement agencies in the first half of 2006 (Table 1). This equates to about 256 per day. Fifty-six percent (56%) of these were larcenies, 26 percent were motor vehicle thefts, and 18 percent were burglaries (not shown).
- For the third year in a row, there was a slight decrease in the mid-year property crime rate, most recently from 32.00 in 2005 to 30.28 in 2006 (Figure 2).
- While the number of residential burglaries was down regionwide by five percent since 2005, the number of nonresidential burglaries increased four percent (Table 1).
- Motor vehicle theft was down from the first half of 2005 (5%), but the number of vehicles stolen between January and June 2006 (11,900) was still considerably higher compared to five (9,590 in 2002) and ten (9,786 in 1997) years earlier (Table 8).
- Almost two-thirds (64%) of the 25 reporting agencies had a one-year decrease in their property crime rates in 2006, similar to the region. These decreases ranged from 2 percent in Imperial Beach and Poway to 27 percent in Santee (Table 4).

BACKGROUND

SANDAG's ability to analyze data and produce reports on crime trends for our region relies upon a cooperative agreement with each local law enforcement agency. SANDAG obtains crime data from every agency on a monthly basis, enabling us to present regional crime data in a timely manner.

Per the FBI's Uniform Crime Reporting (UCR) standardized guidelines for law enforcement agencies across the country, crimes are categorized by the date of data entry, which may or may not reflect the day of occurrence. It should be noted that, while local law enforcement agencies strive to tabulate their statistics in a timely fashion, data entry delays sometimes occur, which may affect statistics. The mid-year crime rates per 1,000 residents are estimated by multiplying the number of crimes reported between January and June by two and dividing that number by the population which has been divided by 1,000.

The statistics presented in this CJ Bulletin include crime rates and numbers for San Diego County and individual jurisdictions for the first half of 2006. Comparisons are made to prior years. The number and type of crimes that are reported can be influenced by several factors, including the degree of opportunity to commit crime in a given jurisdiction, which can be related to the amount of commercial land use and ease of access to the area.

Crime statistics for January through December 2006 are expected to be available in April 2007. If you have any questions about these numbers, please contact the Criminal Justice Research Division at (619) 699-6912. For more information about SANDAG's Criminal Justice Clearinghouse, please visit our Web site: www.sandag.org/cj.

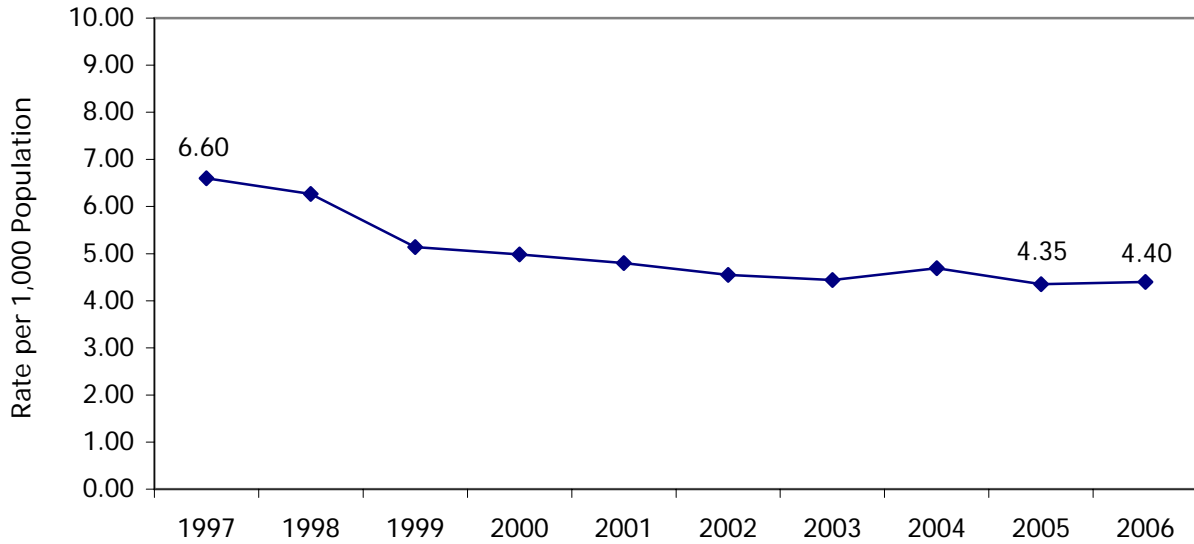
LIST OF FIGURES

Figure 1	Annualized Violent Crime Rate, San Diego Region, Mid-Year 1997 – 2006	Page 6
Figure 2	Annualized Property Crime Rate, San Diego Region, Mid-Year 1997 – 2006	Page 6

LIST OF TABLES

Table 1	FBI Index Offenses, San Diego Region, Mid-Year 2002, 2005, and 2006	Page 7
Table 2	Annualized FBI Index Crime Rates by Jurisdiction, San Diego Region, Mid-Year 2002, 2005, and 2006	Page 8
Table 3	Annualized FBI Index Violent Crime Rates by Jurisdiction, San Diego Region, Mid-Year 2002, 2005, and 2006	Page 9
Table 4	Annualized FBI Index Property Crime Rates by Jurisdiction, San Diego Region, Mid-Year 2002, 2005, and 2006	Page 10
Table 5	FBI Index Crimes by Jurisdiction, San Diego Region, Mid-Year 2002, 2005, and 2006	Page 11
Table 6	Violent Crimes by Jurisdiction, San Diego Region, Mid-Year 2002, 2005, and 2006	Page 12
Table 7	Property Crimes by Jurisdiction, San Diego Region, Mid-Year 2002, 2005, and 2006	Page 13
Table 8	Number of Crimes by Offense, San Diego Region, Mid-Year 1997-2006.....	Page 14
Table 9	Number of Crimes by Offense and Jurisdiction, Mid-Year 2002	Page 15
Table 10	Number of Crimes by Offense and Jurisdiction, Mid-Year 2005	Page 16
Table 11	Number of Crimes by Offense and Jurisdiction, Mid-Year 2006	Page 17
Table 12	Population by Jurisdiction, San Diego Region, 2002, 2005, and 2006	Page 18

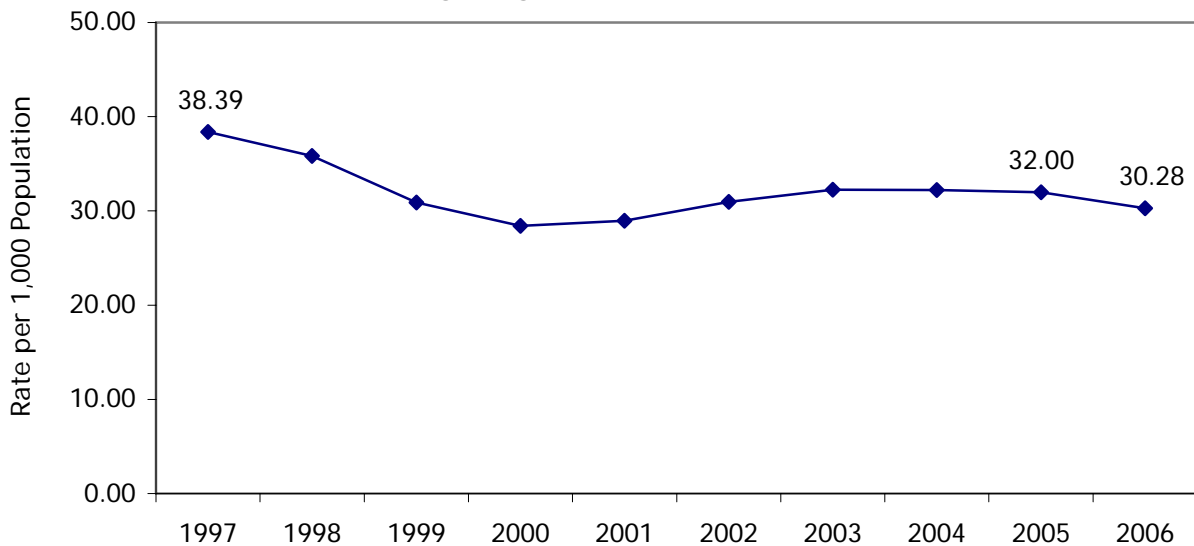
Figure 1
ANNUALIZED VIOLENT CRIME RATE
San Diego Region, Mid-Year 1997 - 2006



NOTES: The violent crime rate includes reported homicides, rapes, robberies, and aggravated assaults. The numbers and types of crimes that are reported can be influenced by several factors, including the degree of opportunity to commit crime in a given jurisdiction, which can be related to the amount of commercial land use and ease of access to the area. The population estimates used to compute crime rates are based upon Census 2000 and 2006 California Department of Finance figures.

SOURCES: California Department of Finance; 2000 U.S. Census; SANDAG

Figure 2
ANNUALIZED PROPERTY CRIME RATE
San Diego Region, Mid-Year 1997 - 2006



NOTES: The property crime rate includes reported burglaries, larceny thefts, and motor vehicle thefts. The numbers and types of crimes that are reported can be influenced by several factors, including the degree of opportunity to commit crime in a given jurisdiction, which can be related to the amount of commercial land use and ease of access to the area. The population estimates used to compute crime rates are based upon Census 2000 and 2006 California Department of Finance figures.

Table 1
FBI INDEX OFFENSES
San Diego Region, Mid-Year 2002, 2005, and 2006

	2002	2005	2006	Change	
				2002-2006	2005-2006
Violent Crime					
Homicide	42	43	65	55%	51%
Rape	386	405	364	-6%	-10%
Robbery	1,554	1,856	2,074	33%	12%
Aggravated Assault	4,659	4,306	4,237	-9%	-2%
Total Violent Crimes	6,641	6,610	6,740	1%	2%
Property Crime					
Burglary - Total	9,037	8,525	8,415	-7%	-1%
Residential	5,052	4,813	4,553	-10%	-5%
Non-Residential	3,985	3,712	3,862	-3%	4%
Larceny - Total	26,576	27,593	26,111	-2%	-5%
Over \$400	9,225	10,134	9,946	8%	-2%
\$400 and Under	17,351	17,459	16,165	-7%	-7%
Motor Vehicle Theft	9,590	12,504	11,900	24%	-5%
Total Property Crimes	45,203	48,622	46,426	3%	-5%
TOTAL FBI INDEX	51,844	55,232	53,166	3%	-4%
TOTAL CCI	25,268	27,639	27,055	7%	-2%

NOTES: The FBI Index of crimes includes homicide, rape, robbery, and aggravated assault in the violent category; burglary, theft, and motor vehicle theft in the property category. The California Crime Index (CCI) includes all FBI Index offenses except larceny theft. The numbers and types of crimes that are reported can be influenced by several factors, including the degree of opportunity to commit crime in a given jurisdiction, which can be related to the amount of commercial land use and ease of access to the area.

SOURCE: SANDAG

Table 2
ANNUALIZED FBI INDEX CRIME RATES BY JURISDICTION
San Diego Region, Mid-Year 2002, 2005, and 2006

	2002	2005	2006	Change	
				2002-2006	2005-2006
Carlsbad	24.42	29.40	28.96	19%	-1%
Chula Vista	38.97	37.62	36.67	-6%	-3%
Coronado	14.57	19.70	18.44	27%	-6%
El Cajon	46.86	49.71	40.61	-13%	-18%
Escondido	40.76	41.36	37.62	-8%	-9%
La Mesa	42.82	42.10	48.27	13%	15%
National City	44.93	49.96	45.80	2%	-8%
Oceanside	41.47	38.20	33.67	-19%	-12%
San Diego	39.39	40.59	39.08	-1%	-4%
Sheriff - Total	25.33	25.29	24.75	-2%	-2%
Del Mar	46.21	52.61	55.70	21%	6%
Encinitas	26.14	20.50	21.94	-16%	7%
Imperial Beach	26.86	32.02	32.65	22%	2%
Lemon Grove	38.04	33.50	34.85	-8%	4%
Poway	20.85	16.68	16.34	-22%	-2%
San Marcos	23.64	22.92	26.74	13%	17%
Santee	25.76	27.90	20.84	-19%	-25%
Solana Beach	26.79	23.23	22.81	-15%	-2%
Vista	34.61	33.00	36.15	4%	10%
Unincorporated	22.76	24.24	22.42	-1%	-8%
Alpine	23.94	27.06	22.43	-6%	-17%
Fallbrook	19.21	29.43	29.21	52%	-1%
Lakeside	24.17	29.99	25.47	5%	-15%
Ramona	15.17	15.92	17.68	17%	11%
Spring Valley	26.77	28.55	27.06	1%	-5%
Valley Center	23.82	22.18	23.86	<1%	8%
Other Unincorporated	22.91	20.76	18.44	-20%	-11%
TOTAL FBI INDEX	35.51	36.35	34.67	-2%	-5%

NOTES: The FBI index includes homicide, rape, robbery, and aggravated assault in the violent category, and burglary, larceny, and motor vehicle theft in the property category. The numbers and types of crimes that are reported can be influenced by several factors, including the degree of opportunity to commit crime in a given jurisdiction, which can be related to the amount of commercial land use and ease of access to the area. The population estimates used to compute crime rates are based upon Census 2000 and 2006 California Department of Finance figures. "Other Unincorporated" equals the Sheriff's unincorporated area minus Alpine, Fallbrook, Lakeside, Ramona, Spring Valley, and Valley Center. The Sheriff's Department provides population figures for those six areas by using beat population estimates.

SOURCES: California Department of Finance; 2000 U.S. Census; SANDAG

Table 3
ANNUALIZED FBI INDEX VIOLENT CRIME RATES BY JURISDICTION
San Diego Region, Mid-Year 2002, 2005, and 2006

	2002	2005	2006	Change	
				2002-2006	2005-2006
Carlsbad	2.27	2.68	3.43	51%	28%
Chula Vista	4.59	4.10	4.50	-2%	10%
Coronado	0.77	0.74	1.07	--	--
El Cajon	5.82	5.40	5.00	-14%	-7%
Escondido	4.38	5.09	5.23	19%	3%
La Mesa	3.41	3.55	4.49	32%	26%
National City	9.01	7.08	8.88	-1%	25%
Oceanside	6.22	5.13	5.16	-17%	1%
San Diego	5.47	4.95	4.79	-12%	-3%
Sheriff - Total	2.95	3.30	3.38	15%	2%
Del Mar	3.11	0.88	3.98	--	--
Encinitas	2.27	2.17	2.52	11%	16%
Imperial Beach	4.65	5.22	6.46	39%	24%
Lemon Grove	6.31	4.48	6.62	5%	48%
Poway	2.13	1.27	1.19	--	--
San Marcos	2.76	3.02	4.01	45%	33%
Santee	2.27	3.17	2.67	18%	-16%
Solana Beach	1.35	1.35	0.90	--	--
Vista	3.71	5.08	5.32	43%	5%
Unincorporated	2.83	3.28	2.99	6%	-9%
Alpine	2.26	2.94	2.25	<-1%	--
Fallbrook	2.69	3.43	2.58	-4%	-25%
Lakeside	2.98	3.48	3.83	29%	10%
Ramona	1.10	2.60	2.63	--	1%
Spring Valley	3.73	3.97	3.87	4%	-3%
Valley Center	3.28	3.29	3.10	-5%	-6%
Other Unincorporated	2.84	3.08	2.69	-5%	-13%
TOTAL FBI INDEX VIOLENT	4.55	4.35	4.40	-3%	1%

NOTES: The FBI index includes homicide, rape, robbery, and aggravated assault in the violent category. The numbers and types of crimes that are reported can be influenced by several factors, including the degree of opportunity to commit crime in a given jurisdiction, which can be related to the amount of commercial land use and ease of access to the area. The population estimates used to compute crime rates are based upon Census 2000 and 2006 California Department of Finance figures. "Other Unincorporated" equals the Sheriff's unincorporated area minus Alpine, Fallbrook, Lakeside, Ramona, Spring Valley, and Valley Center. The Sheriff's Department provides population figures for those six areas by using beat population estimates. Percent changes are not presented for rates that are based upon crime numbers that equal 30 or less.

SOURCES: California Department of Finance; 2000 U.S. Census; SANDAG

Table 4
ANNUALIZED FBI INDEX PROPERTY CRIME RATES BY JURISDICTION
San Diego Region, Mid-Year 2002, 2005, and 2006

	2002	2005	2006	Change	
				2002-2006	2005-2006
Carlsbad	22.15	26.72	25.54	15%	-4%
Chula Vista	34.38	33.52	32.16	-6%	-4%
Coronado	13.80	18.96	17.37	26%	-8%
El Cajon	41.04	44.30	35.62	-13%	-20%
Escondido	36.39	36.28	32.39	-11%	-11%
La Mesa	39.41	38.55	43.79	11%	14%
National City	35.92	42.88	36.92	3%	-14%
Oceanside	35.26	33.07	28.52	-19%	-14%
San Diego	33.92	35.64	34.29	1%	-4%
Sheriff - Total	22.38	21.98	21.37	-5%	-3%
Del Mar	43.10	51.72	51.72	20%	0%
Encinitas	23.87	18.33	19.42	-19%	6%
Imperial Beach	22.21	26.81	26.19	18%	-2%
Lemon Grove	31.73	29.02	28.23	-11%	-3%
Poway	18.72	15.41	15.16	-19%	-2%
San Marcos	20.88	19.90	22.73	9%	14%
Santee	23.48	24.73	18.17	-23%	-27%
Solana Beach	25.44	21.88	21.91	-14%	<1%
Vista	30.90	27.93	30.83	<-1%	10%
Unincorporated	19.93	20.97	19.43	-3%	-7%
Alpine	21.68	24.13	20.18	-7%	-16%
Fallbrook	16.52	26.01	26.63	61%	2%
Lakeside	21.19	26.51	21.64	2%	-18%
Ramona	14.07	13.33	15.05	7%	13%
Spring Valley	23.04	24.58	23.19	1%	-6%
Valley Center	20.53	18.89	20.77	1%	10%
Other Unincorporated	20.07	17.67	15.74	-22%	-11%
TOTAL FBI INDEX PROPERTY	30.96	32.00	30.28	-2%	-5%

NOTES: The FBI index includes burglary, larceny, and motor vehicle theft in the property category. The numbers and types of crimes that are reported can be influenced by several factors, including the degree of opportunity to commit crime in a given jurisdiction, which can be related to the amount of commercial land use and ease of access to the area. The population estimates used to compute crime rates are based upon Census 2000 and 2006 California Department of Finance figures. "Other Unincorporated" equals the Sheriff's unincorporated area minus Alpine, Fallbrook, Lakeside, Ramona, Spring Valley, and Valley Center. The Sheriff's Department provides population figures for those six areas by using beat population estimates.

SOURCES: California Department of Finance; 2000 U.S. Census; SANDAG

Table 5
FBI INDEX CRIMES BY JURISDICTION
San Diego Region, Mid-Year 2002, 2005, and 2006

	2002	2005	2006	Change	
				2002-2006	2005-2006
Carlsbad	1,076	1,393	1,428	33%	3%
Chula Vista	3,722	4,076	4,096	10%	<1%
Coronado	189	265	242	28%	-9%
El Cajon	2,263	2,419	1,967	-13%	-19%
Escondido	2,795	2,912	2,648	-5%	-9%
La Mesa	1,192	1,174	1,345	13%	15%
National City	1,306	1,588	1,455	11%	-8%
Oceanside	3,470	3,331	2,945	-15%	-12%
San Diego	24,749	26,390	25,620	4%	-3%
Sheriff - Total	10,207	10,574	10,412	2%	-2%
Del Mar	104	119	126	21%	6%
Encinitas	783	641	689	-12%	7%
Imperial Beach	370	442	450	22%	2%
Lemon Grove	482	426	442	-8%	4%
Poway	518	421	413	-20%	-2%
San Marcos	719	834	1,026	43%	23%
Santee	691	757	570	-18%	-25%
Solana Beach	178	155	152	-15%	-2%
Vista	1,594	1,547	1,707	7%	10%
Unincorporated	4,768	5,232	4,837	1%	-8%
Alpine	329	378	309	-6%	-18%
Fallbrook	464	747	746	61%	<-1%
Lakeside	632	784	659	4%	-16%
Ramona	261	282	316	21%	12%
Spring Valley	925	1,000	944	2%	-6%
Valley Center	261	243	262	<1%	8%
Other Unincorporated	1,896	1,798	1,601	-16%	-11%
California Highway Patrol	81	100	54	-33%	-46%
Calif. State University San Marcos	17	30	23	--	--
San Diego State University	341	359	266	-22%	-26%
University of California San Diego	239	419	383	60%	-9%
San Diego Harbor Police	160	157	248	55%	58%
State Parks and Recreation	37	45	34	-8%	-24%
TOTAL FBI	51,844	55,232	53,166	3%	-4%

NOTES: Percent changes are not presented if either comparison number is 30 or less. The FBI index includes homicide, rape, robbery, and aggravated assault in the violent category, and burglary, larceny, and motor vehicle theft in the property category. The numbers and types of crimes that are reported can be influenced by several factors, including the degree of opportunity to commit crime in a given jurisdiction, which can be related to the amount of commercial land use and ease of access to the area. "Other Unincorporated" equals the Sheriff's unincorporated area minus Alpine, Fallbrook, Lakeside, Ramona, Spring Valley, and Valley Center. Due to no available population information for the following agencies, crime rates are not computed for: California Highway Patrol, California State University San Marcos, San Diego State University, University of California San Diego, San Diego Harbor Police, and State Parks and Recreation.

SOURCE: SANDAG

Table 6
VIOLENT CRIMES BY JURISDICTION
San Diego Region, Mid-Year 2002, 2005, and 2006

	2002	2005	2006	Change	
				2002-2006	2005-2006
Carlsbad	100	127	169	69%	33%
Chula Vista	438	444	503	15%	13%
Coronado	10	10	14	--	--
El Cajon	281	263	242	-14%	-8%
Escondido	300	358	368	23%	3%
La Mesa	95	99	125	32%	26%
National City	262	225	282	8%	25%
Oceanside	520	447	451	-13%	1%
San Diego	3,437	3,219	3,141	-9%	-2%
Sheriff - Total	1,190	1,381	1,421	19%	3%
Del Mar	7	2	9	--	--
Encinitas	68	68	79	16%	16%
Imperial Beach	64	72	89	39%	24%
Lemon Grove	80	57	84	5%	47%
Poway	53	32	30	-43%	-6%
San Marcos	84	110	154	83%	40%
Santee	61	86	73	20%	-15%
Solana Beach	9	9	6	--	--
Vista	171	238	251	47%	5%
Unincorporated	593	707	646	9%	-9%
Alpine	31	41	31	0%	-24%
Fallbrook	65	87	66	2%	-24%
Lakeside	78	91	99	27%	9%
Ramona	19	46	47	--	2%
Spring Valley	129	139	135	5%	-3%
Valley Center	36	36	34	-6%	-6%
Other Unincorporated	235	267	234	<-1%	-12%
California Highway Patrol	1	13	6	--	--
Calif. State University San Marcos	0	1	1	--	--
San Diego State University	4	11	10	--	--
University of California San Diego	1	5	1	--	--
San Diego Harbor Police	2	6	4	--	--
State Parks and Recreation	0	1	2	--	--
TOTAL VIOLENT OFFENSES	6,641	6,610	6,740	1%	2%

NOTES: Percent changes are not presented if either comparison number is 30 or less. The FBI index includes homicide, rape, robbery, and aggravated assault in the violent category. The numbers and types of crimes that are reported can be influenced by several factors, including the degree of opportunity to commit crime in a given jurisdiction, which can be related to the amount of commercial land use and ease of access to the area. "Other Unincorporated" equals the Sheriff's unincorporated area minus Alpine, Fallbrook, Lakeside, Ramona, Spring Valley, and Valley Center. Due to unavailability of population information for the following, crime rates are not computed for these agencies: California Highway Patrol, California State University San Marcos, San Diego State University, University of California San Diego, San Diego Harbor Police, and State Parks and Recreation.

SOURCE: SANDAG

Table 7
PROPERTY CRIMES BY JURISDICTION
San Diego Region, Mid-Year 2002, 2005, and 2006

	2002	2005	2006	Change	
				2002-2006	2005-2006
Carlsbad	976	1,266	1,259	29%	-1%
Chula Vista	3,284	3,632	3,593	9%	-1%
Coronado	179	255	228	27%	-11%
El Cajon	1,982	2,156	1,725	-13%	-20%
Escondido	2,495	2,554	2,280	-9%	-11%
La Mesa	1,097	1,075	1,220	11%	13%
National City	1,044	1,363	1,173	12%	-14%
Oceanside	2,950	2,884	2,494	-15%	-14%
San Diego	21,312	23,171	22,479	5%	-3%
Sheriff - Total	9,017	9,193	8,991	<-1%	-2%
Del Mar	97	117	117	21%	0%
Encinitas	715	573	610	-15%	6%
Imperial Beach	306	370	361	18%	-2%
Lemon Grove	402	369	358	-11%	-3%
Poway	465	389	383	-18%	-2%
San Marcos	635	724	872	37%	20%
Santee	630	671	497	-21%	-26%
Solana Beach	169	146	146	-14%	0%
Vista	1,423	1,309	1,456	2%	11%
Unincorporated	4,175	4,525	4,191	<1%	-7%
Alpine	298	337	278	-7%	-18%
Fallbrook	399	660	680	70%	3%
Lakeside	554	693	560	1%	-19%
Ramona	242	236	269	11%	14%
Spring Valley	796	861	809	2%	-6%
Valley Center	225	207	228	1%	10%
Other Unincorporated	1,661	1,531	1,367	-18%	-11%
California Highway Patrol	80	87	48	-40%	-45%
Calif. State University San Marcos	17	29	22	--	--
San Diego State University	337	348	256	-24%	-26%
University of California San Diego	238	414	382	61%	-8%
San Diego Harbor Police	158	151	244	54%	62%
State Parks and Recreation	37	44	32	-14%	-27%
TOTAL PROPERTY OFFENSES	45,203	48,622	46,426	3%	-5%

NOTES: Percent changes are not presented if either comparison number is 30 or less. The FBI index includes homicide, rape, robbery, and aggravated assault in the violent category, and burglary, larceny, and motor vehicle theft in the property category. The numbers and types of crimes that are reported can be influenced by several factors, including the degree of opportunity to commit crime in a given jurisdiction, which can be related to the amount of commercial land use and ease of access to the area. "Other Unincorporated" equals the Sheriff's unincorporated area minus Alpine, Fallbrook, Lakeside, Ramona, Spring Valley, and Valley Center. Due to no available population information for the following agencies, crime rates are not computed for: California Highway Patrol, California State University San Marcos, San Diego State University, University of California San Diego, San Diego Harbor Police, and State Parks and Recreation.

SOURCE: SANDAG

Table 8
NUMBER OF CRIMES BY OFFENSE
San Diego Region, Mid-Year 1997-2006

	Homicide	Rape	Robbery	Aggravated Assault	Total Violent Crime	Residential Burglary	Non-Residential Burglary	Total Burglary	Larceny Over \$400	Larceny \$400 & Under	Total Larceny	Motor Vehicle Theft	Total Property Crime	FBI Crime Index	Calif. Crime Index	As of August 2006 Population
1997	59	417	2,414	5,869	8,759	6,436	4,175	10,611	8,747	21,788	30,535	9,786	50,932	59,691	29,156	2,653,400
1998	39	383	2,216	5,840	8,478	5,559	3,920	9,479	8,467	20,468	28,935	9,985	48,399	56,877	27,942	2,702,800
1999	45	371	1,714	4,936	7,066	4,290	3,337	7,627	8,071	18,352	26,423	8,461	42,511	49,577	23,154	2,751,000
2000	38	392	1,744	4,832	7,006	4,620	3,277	7,897	7,621	16,278	23,899	8,204	40,000	47,006	23,107	2,813,833
2001	51	368	1,576	4,881	6,876	4,324	3,351	7,675	8,244	16,458	24,702	9,081	41,458	48,334	23,632	2,863,657
2002	42	386	1,554	4,659	6,641	5,052	3,985	9,037	9,225	17,351	26,576	9,590	45,203	51,844	25,268	2,920,010
2003	57	449	1,660	4,438	6,604	5,350	4,466	9,816	8,851	17,961	26,812	11,308	47,936	54,540	27,728	2,971,805
2004	71	415	1,715	4,867	7,068	5,150	3,951	9,101	9,566	18,721	28,287	11,160	48,548	55,616	27,329	3,013,014
2005	43	405	1,856	4,306	6,610	4,813	3,712	8,525	10,134	17,459	27,593	12,504	48,622	55,232	27,639	3,039,277
2006	65	364	2,074	4,237	6,740	4,553	3,862	8,415	9,946	16,165	26,111	11,900	46,426	53,166	27,055	3,066,820

SOURCE: SANDAG

**Table 9
NUMBER OF CRIMES BY OFFENSE AND JURISDICTION
Mid-Year 2002**

	Homicide	Rape	Robbery	Aggravated Assault	Residential Burglary	Non-Residential Burglary	Total Burglary	Larceny Over \$400	Larceny \$400 and Under	Total Larceny	Motor Vehicle Theft	Arson	FBI Crime Index	Calif. Crime Index
Carlsbad	0	4	29	67	92	147	239	218	387	605	132	8	1,076	471
Chula Vista	2	26	110	300	334	223	557	555	1,315	1,870	857	56	3,722	1,852
Coronado	0	2	5	3	27	22	49	46	61	107	23	0	189	82
El Cajon	0	33	66	182	177	149	326	399	834	1,233	423	19	2,263	1,030
Escondido	1	25	77	197	255	205	460	477	1,073	1,550	485	15	2,795	1,245
La Mesa	2	7	35	51	93	106	199	215	504	719	179	4	1,192	473
National City	1	18	72	171	47	169	216	152	390	542	286	5	1,306	764
Oceanside	2	34	136	348	317	207	524	574	1,328	1,902	524	17	3,470	1,568
San Diego	24	158	759	2,496	2,295	1,411	3,706	4,533	8,024	12,557	5,049	116	24,749	12,192
Sheriff-Total	10	79	263	838	1,402	1,304	2,706	1,798	2,994	4,792	1,519	64	10,207	5,415
Del Mar	0	0	0	7	9	19	28	29	27	56	13	0	104	48
Encinitas	0	8	16	44	83	98	181	168	281	449	85	3	783	334
Imperial Beach	0	7	9	48	44	47	91	47	93	140	75	7	370	230
Lemon Grove	0	5	27	48	59	77	136	61	118	179	87	2	482	303
Poway	0	4	3	46	67	77	144	97	177	274	47	2	518	244
San Marcos	1	6	23	54	99	138	237	103	204	307	91	3	719	412
Santee	0	4	9	48	75	72	147	109	280	389	94	3	691	302
Solana Beach	0	0	2	7	25	33	58	36	57	93	18	0	178	85
Vista	3	5	63	100	225	206	431	298	491	789	203	5	1,594	805
Unincorporated	6	40	111	436	716	537	1,253	850	1,266	2,116	806	39	4,768	2,652
Alpine	4	1	5	21	46	39	85	55	90	145	68	5	329	184
Fallbrook	1	3	15	46	72	49	121	93	130	223	55	2	464	241
Lakeside	0	6	11	61	98	63	161	98	177	275	118	0	632	357
Ramona	0	3	3	13	30	42	72	43	86	129	41	1	261	132
Spring Valley	1	8	42	78	147	75	222	155	235	390	184	0	925	535
Valley Center	0	2	5	29	38	40	78	48	60	108	39	1	261	153
Other Unincorporated	0	17	30	188	285	229	514	358	488	846	301	30	1,896	1,050
California Highway Patrol	0	0	0	1	0	1	1	5	24	29	50	0	81	52
Calif. State University San Marcos	0	0	0	0	0	3	3	1	13	14	0	0	17	3
San Diego State University	0	0	1	3	7	11	18	109	176	285	34	1	341	56
University of California San Diego	0	0	0	1	6	15	21	51	142	193	24	1	239	46
San Diego Harbor Police	0	0	1	1	0	4	4	83	71	154	0	1	160	6
State Parks and Recreation	0	0	0	0	0	8	8	9	15	24	5	2	37	13
TOTAL	42	386	1,554	4,659	5,052	3,985	9,037	9,225	17,351	26,576	9,590	309	51,844	25,268

SOURCE: SANDAG

**Table 10
NUMBER OF CRIMES BY OFFENSE AND JURISDICTION
Mid-Year 2005**

	Homicide	Rape	Robbery	Aggravated Assault	Residential Burglary	Non-Residential Burglary	Total Burglary	Larceny Over \$400	Larceny \$400 and Under	Total Larceny	Motor Vehicle Theft	Arson	FBI Crime Index	Calif. Crime Index
Carlsbad	0	6	46	75	140	119	259	279	588	867	140	4	1,393	526
Chula Vista	2	31	165	246	300	308	608	653	1,199	1,852	1,172	11	4,076	2,224
Coronado	0	2	4	4	50	10	60	61	99	160	35	1	265	105
El Cajon	1	21	83	158	150	250	400	352	794	1,146	610	20	2,419	1,273
Escondido	1	21	89	247	198	206	404	527	1,044	1,571	579	14	2,912	1,341
La Mesa	0	5	48	46	74	72	146	221	439	660	269	1	1,174	514
National City	3	9	87	126	64	126	190	185	568	753	420	4	1,588	835
Oceanside	3	39	110	295	366	175	541	565	1,422	1,987	356	12	3,331	1,344
San Diego	23	185	909	2,102	2,259	1,433	3,692	5,057	7,578	12,635	6,844	99	26,390	13,755
Sheriff-Total	10	83	304	984	1,193	976	2,169	1,942	3,150	5,092	1,932	54	10,574	5,482
Del Mar	0	0	0	2	10	10	20	40	42	82	15	0	119	37
Encinitas	1	5	14	48	87	79	166	137	182	319	88	3	641	322
Imperial Beach	0	4	20	48	39	39	78	52	109	161	131	1	442	281
Lemon Grove	1	0	23	33	40	43	83	57	112	169	117	1	426	257
Poway	0	4	5	23	35	46	81	90	168	258	50	5	421	163
San Marcos	0	7	29	74	54	91	145	148	311	459	120	5	834	375
Santee	0	8	12	66	63	63	126	148	281	429	116	2	757	328
Solana Beach	0	1	4	4	28	16	44	40	39	79	23	0	155	76
Vista	1	7	85	145	174	151	325	236	517	753	231	14	1,547	794
Unincorporated	7	47	112	541	663	438	1,101	994	1,389	2,383	1,041	23	5,232	2,849
Alpine	1	2	8	30	36	42	78	95	102	197	62	1	378	181
Fallbrook	0	6	19	62	136	80	216	125	235	360	84	4	747	387
Lakeside	0	7	15	69	84	65	149	153	222	375	169	0	784	409
Ramona	0	5	4	37	28	25	53	66	80	146	37	0	282	136
Spring Valley	4	9	32	94	121	55	176	162	253	415	270	0	1,000	585
Valley Center	1	5	3	27	31	34	65	46	50	96	46	5	243	147
Other Unincorporated	1	13	31	222	227	137	364	347	447	794	373	13	1,798	1,004
California Highway Patrol	0	0	1	12	1	4	5	2	18	20	62	0	100	80
Calif. State University San Marcos	0	1	0	0	1	5	6	5	17	22	1	0	30	8
San Diego State University	0	2	3	6	6	5	11	119	171	290	47	0	359	69
University of California San Diego	0	0	3	2	11	15	26	84	269	353	35	1	419	66
San Diego Harbor Police	0	0	4	2	0	3	3	72	76	148	0	1	157	9
State Parks and Recreation	0	0	0	1	0	5	5	10	27	37	2	0	45	8
TOTAL	43	405	1,856	4,306	4,813	3,712	8,525	10,134	17,459	27,593	12,504	222	55,232	27,639

SOURCE: SANDAG

**Table 11
NUMBER OF CRIMES BY OFFENSE AND JURISDICTION
Mid-Year 2006**

	Homicide	Rape	Robbery	Aggravated Assault	Residential Burglary	Non-Residential Burglary	Total Burglary	Larceny Over \$400	Larceny \$400 and Under	Total Larceny	Motor Vehicle Theft	Arson	FBI Crime Index	Calif. Crime Index
Carlsbad	0	9	35	125	139	121	260	355	535	890	109	9	1,428	538
Chula Vista	2	34	207	260	292	249	541	681	1,258	1,939	1,113	19	4,096	2,157
Coronado	0	0	5	9	18	9	27	51	112	163	38	1	242	79
El Cajon	3	18	61	160	120	200	320	296	657	953	452	12	1,967	1,014
Escondido	2	15	124	227	219	167	386	431	910	1,341	553	7	2,648	1,307
La Mesa	1	3	55	66	103	119	222	246	473	719	279	8	1,345	626
National City	1	4	106	171	73	113	186	172	400	572	415	3	1,455	883
Oceanside	4	23	118	306	345	153	498	526	1,139	1,665	331	10	2,945	1,280
San Diego	36	159	987	1,959	2,056	1,508	3,564	4,945	7,351	12,296	6,619	113	25,620	13,324
Sheriff-Total	16	96	369	940	1,172	1,169	2,341	1,916	2,887	4,803	1,847	63	10,412	5,609
Del Mar	0	0	3	6	13	11	24	49	30	79	14	0	126	47
Encinitas	3	1	23	52	89	81	170	145	216	361	79	0	689	328
Imperial Beach	0	9	17	63	41	44	85	63	115	178	98	0	450	272
Lemon Grove	0	2	32	50	27	77	104	49	101	150	104	4	442	292
Poway	0	3	8	19	42	52	94	102	140	242	47	2	413	171
San Marcos	3	9	39	103	97	154	251	159	298	457	164	9	1,026	569
Santee	0	7	21	45	66	82	148	106	161	267	82	6	570	303
Solana Beach	1	0	3	2	14	24	38	34	53	87	21	1	152	65
Vista	1	19	92	139	184	173	357	290	506	796	303	7	1,707	911
Unincorporated	8	46	131	461	599	471	1,070	919	1,267	2,186	935	34	4,837	2,651
Alpine	0	1	10	20	34	33	67	60	89	149	62	2	309	160
Fallbrook	2	6	20	38	101	78	179	189	236	425	76	2	746	321
Lakeside	1	10	12	76	74	62	136	125	171	296	128	0	659	363
Ramona	0	1	10	36	38	43	81	55	91	146	42	1	316	170
Spring Valley	1	7	41	86	110	73	183	131	228	359	267	0	944	585
Valley Center	3	2	7	22	26	41	67	56	71	127	34	0	262	135
Other Unincorporated	1	19	31	183	216	141	357	303	381	684	326	29	1,601	917
California Highway Patrol	0	0	0	6	0	3	3	0	13	13	32	0	54	41
Calif. State University San Marcos	0	1	0	0	0	2	2	5	15	20	0	0	23	3
San Diego State University	0	2	5	3	8	6	14	75	113	188	54	0	266	78
University of California San Diego	0	0	0	1	8	31	39	97	194	291	52	2	383	92
San Diego Harbor Police	0	0	2	2	0	11	11	143	89	232	1	0	248	16
State Parks and Recreation	0	0	0	2	0	1	1	7	19	26	5	0	34	8
TOTAL	65	364	2,074	4,237	4,553	3,862	8,415	9,946	16,165	26,111	11,900	247	53,166	27,055

SOURCE: SANDAG

Table 12
POPULATION BY JURISDICTION
San Diego Region, 2002, 2005, and 2006

	2002	2005	2006	Change	
				2001-2005	2004-2005
Carlsbad	88,120	94,776	98,607	12%	4%
Chula Vista	191,033	216,694	223,423	17%	3%
Coronado	25,951	26,902	26,248	1%	-2%
El Cajon	96,578	97,331	96,867	<1%	<-1%
Escondido	137,130	140,803	140,766	3%	<-1%
La Mesa	55,671	55,766	55,724	<1%	<-1%
National City	58,133	63,569	63,537	9%	<-1%
Oceanside	167,334	174,404	174,925	5%	<1%
San Diego	1,256,623	1,300,343	1,311,162	4%	1%
Sheriff - Total	805,895	836,319	841,512	4%	1%
Del Mar	4,501	4,524	4,524	1%	0%
Encinitas	59,919	62,530	62,815	5%	<1%
Imperial Beach	27,550	27,604	27,563	<1%	<-1%
Lemon Grove	25,342	25,434	25,363	<1%	<-1%
Poway	49,684	50,477	50,542	2%	<1%
San Marcos	60,825	72,768	76,725	26%	5%
Santee	53,655	54,267	54,709	2%	1%
Solana Beach	13,287	13,347	13,327	<1%	<-1%
Vista	92,116	93,746	94,440	3%	1%
Unincorporated	419,016	431,622	431,504	3%	<-1%
Alpine	27,486	27,937	27,547	<1%	-1%
Fallbrook	48,305	50,757	51,079	6%	1%
Lakeside	52,286	52,291	51,751	-1%	-1%
Ramona	34,407	35,418	35,739	4%	1%
Spring Valley	69,096	70,055	69,764	1%	<-1%
Valley Center	21,918	21,915	21,958	<1%	<1%
Other Unincorporated	165,518	173,249	173,666	5%	<1%
Camp Pendleton	37,542	32,370	34,049	-9%	5%
TOTAL	2,920,010	3,039,277	3,066,820	5%	1%
Occupied Households	1,017,385	1,061,021	1,067,846	5%	1%
Registered Vehicles	2,123,664	2,231,463	2,270,823	7%	2%
Female Population	1,458,773	1,518,581	1,531,155	5%	1%

NOTES: Population estimates are based upon January 1, 2006, Department of Finance (DOF) figures and have been adjusted to reflect the 2000 Census. "Other Unincorporated" equals the Sheriff's unincorporated area minus Alpine, Fallbrook, Lakeside, Ramona, Spring Valley, and Valley Center. Camp Pendleton population is excluded from Sheriff's Unincorporated area and included in the region total. Registered vehicles reflect the midpoint in time between January and June.

SOURCES: California Department of Finance; 2000 U.S. Census; SANDAG