

refuel

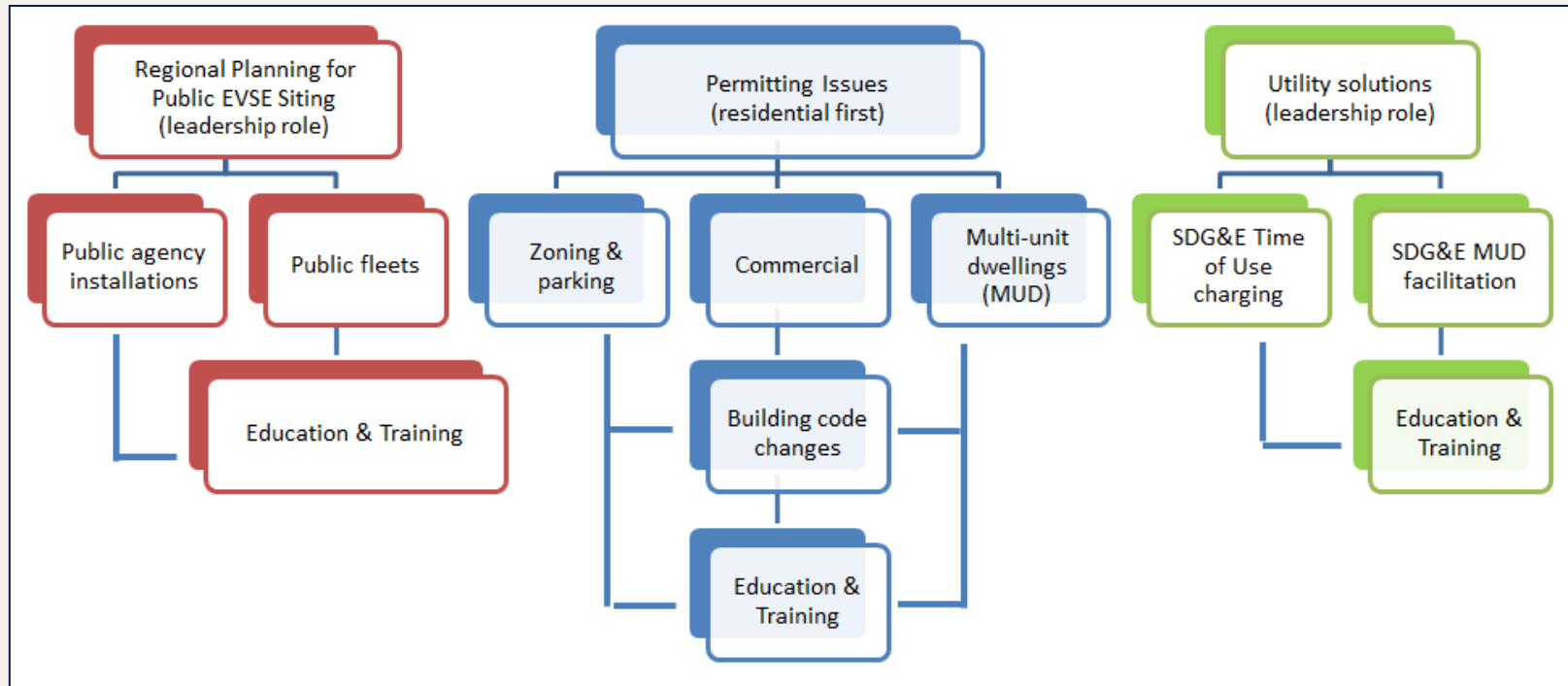


San Diego Regional Alternative Fuel
Coordinating Council

Refuel: Electric Subcommittee

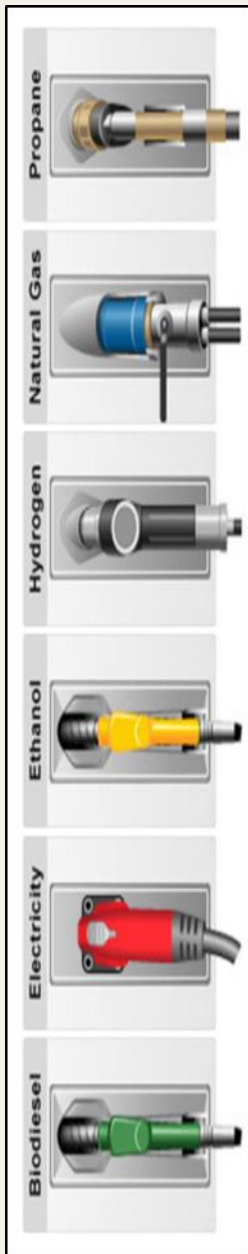
November 19, 2014

REVI Prioritization of Barriers



Progress on Regional PEV Barriers

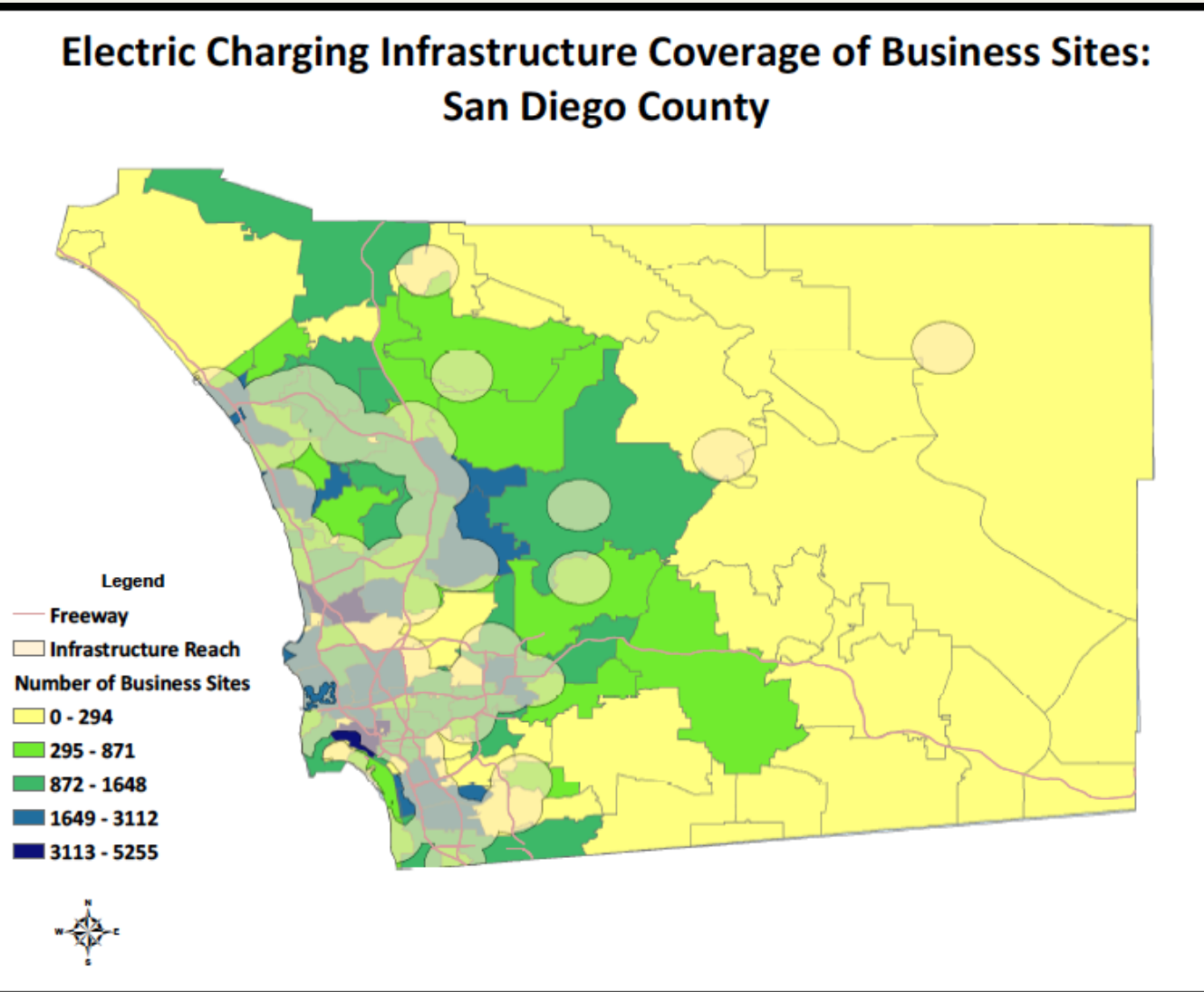
Barrier	Guidance Materials	Action Items
1. Permitting/Inspection Lack of streamlined permitting and inspection processes	EXAMPLES: City of San Diego and Oceanside permitting guidelines RESOURCE: OPR draft permitting documents DELIVERABLE: Residential and Commercial Permit and Inspection fact sheet	READINESS PLAN: State PEV guidebook and approved fact sheet
2. Building Codes Lack of standard building codes	OUTSTANDING: Building codes remain a barrier; work with the state to develop regional and statewide consistency.	READINESS PLAN: Document remaining barriers and gaps and ways to coordinate with the state
3. Zoning and Parking Rules Lack of standard regional ordinances	EXAMPLE: City of San Diego Technical Policy on addressing accessibility to EV charging stations ACTIONS: Comments submitted to OPR on behalf of REVI on draft EV charging station accessibility guidance.	READINESS PLAN: Document progress made in addressing accessibility and describe barriers and gaps from the EV Project and other local installations
4. Training and Education for Municipal Staff and Electrical Contractors Lack of knowledge about PEVs and EVSE	TRAININGS: EVITP and FSP trainings RESOURCE: CMUTCD Traffic Operations Policy Directive 13-01 DELIVERABLES: Resources for Public Agencies and Electrical Contractors fact sheets	READINESS PLAN: California PEV Collaborative's Toolkit and approved fact sheets
5. Lack of Public Knowledge of PEV & EVSE Municipal outreach to Local Residents and Businesses	DELIVERABLE: Plug-in Electric Vehicles & Charging: Getting Started fact sheet	READINESS PLAN: Approved fact sheet
6. EVSE at Multi Unit Dwellings Consumer and HOA lack of knowledge	RESOURCES: SDG&E case study and fact sheet on EVSE install process for MUDs DELIVERABLE: MUD fact sheet	READINESS PLAN: SDG&E MUD activities and how overcame barriers and approved fact sheet
7. Regional Planning for Public EVSE Siting Siting vs installation; experience to develop alternate approaches	RESOURCES: CCSE fact sheet on value proposition to host and SANDAG public agency guidelines for including EVSE in new construction DELIVERABLES: Regional Planning for Public Charging fact sheet	READINESS PLAN: CCSE report on same topic and approved fact sheet IN PROGRESS: Maps of optimal Level 2 and DCFC EVSE sites for each local jurisdiction.
8. On Peak Charging – TOU Utility Rates A. Support of time of use (TOU) pricing B. High demand charges	RESOURCES: SDG&E workshops and fact sheets	READINESS PLAN: SDG&E and EV Project findings
9. Public Agency EVSE Installations Contracting challenges; identify common project barriers and find solutions	DELIVERABLE: RFP template for public agencies (and commercial entities)	READINESS PLAN: Track agencies/ institutions progress in EVSE siting and installations
10. Commercial and Workplace Charging Lack of understanding workplace charging	DELIVERABLE: Workplace Charging for Businesses fact sheet	READINESS PLAN: Approved fact sheet
11. PEVs in Government Fleets Procurement justification for public fleets	DELIVERABLE: Resources for Fleet Managers fact sheet	READINESS PLAN: Approved fact sheet





Electric Charging

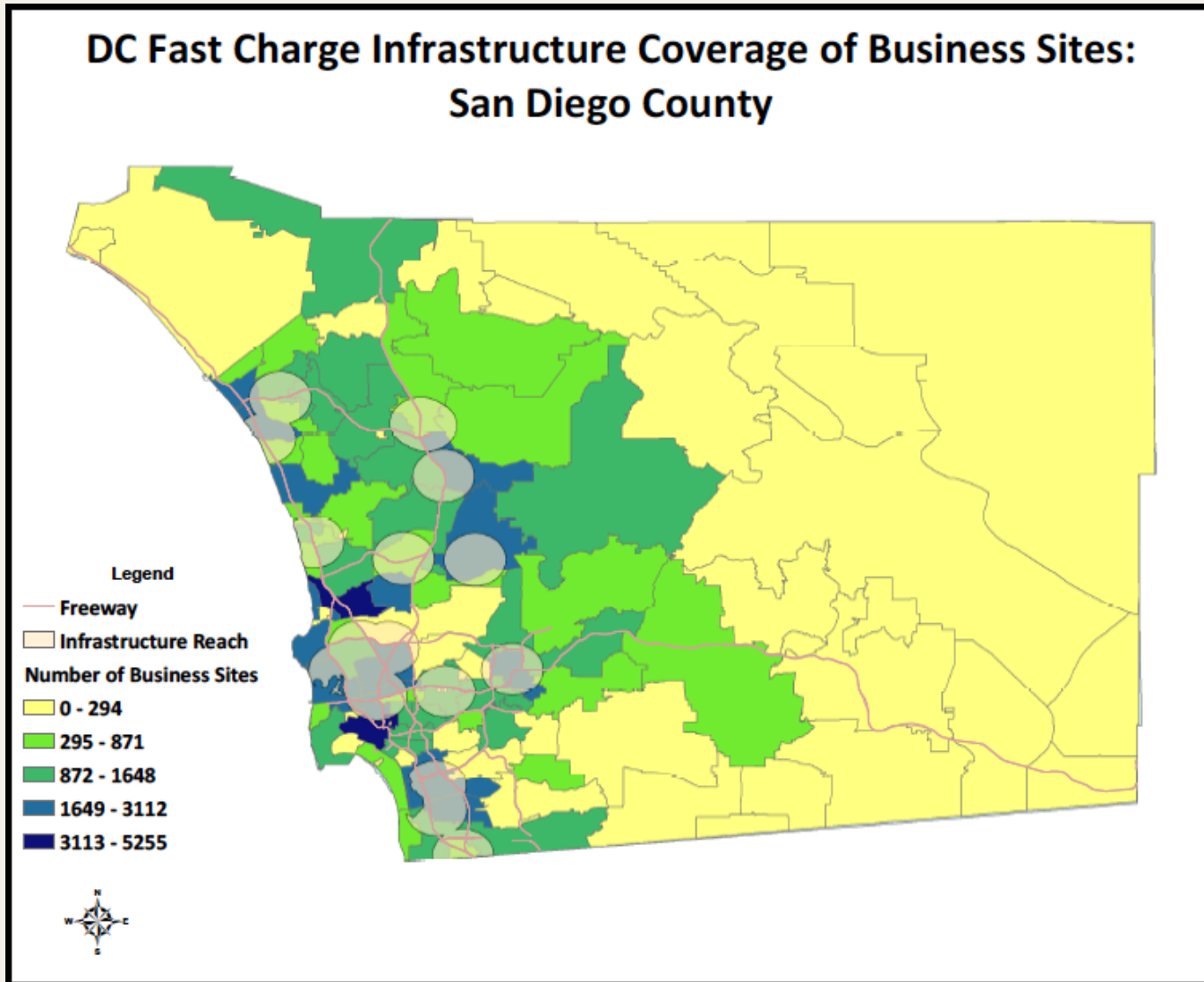
Electric Charging Infrastructure Coverage of Business Sites: San Diego County





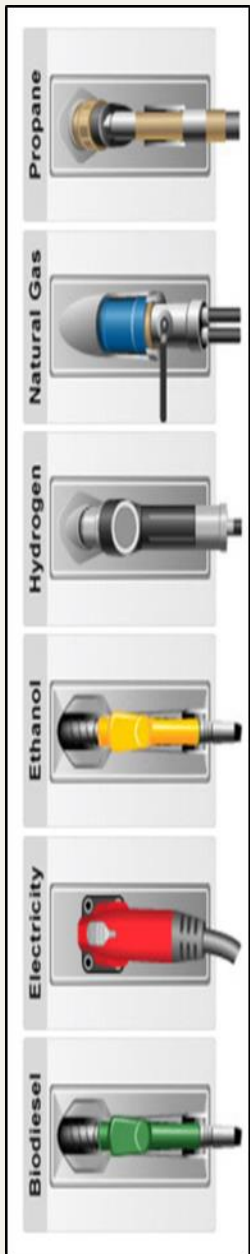
Electric Charging – DC Fast

DC Fast Charge Infrastructure Coverage of Business Sites: San Diego County



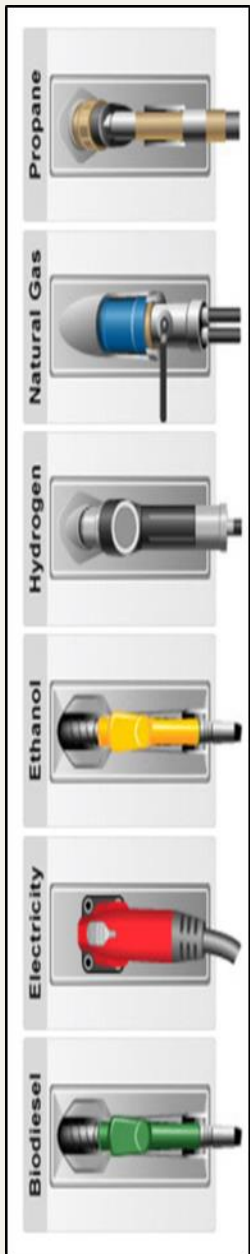
Infrastructure Changes Since REVI

- Listing on AFDC
Time frame December 2013 to
November 2014.
 - Level 1: **12**
 - Level 2: **64**
 - DC Fast: **5**



Laws & Regulations

- **SB 1275** – Charge Ahead California
- **SD 880** - Common Interest Developments: Electric Vehicle Charging Stations
- **AB 2565** - Rental Property: Electric Vehicle Charging Stations
- **AB 2414** - Parking Facilities: Electric Vehicle Charging
- **AB-1092** Building standards: electric vehicle charging



refuel



San Diego Regional Alternative Fuel
Coordinating Council

Refuel: Electric Subcommittee

November 19, 2014

Anna Lowe