



401 B Street, Suite 800
San Diego, CA 92101-4231
(619) 699-1900
Fax (619) 699-1905
www.sandag.org

FASTRAK® PROGRESS REPORT

OCTOBER – DECEMBER 2012

MEMBER AGENCIES

Cities of
Carlsbad
Chula Vista
Coronado
Del Mar
El Cajon
Encinitas
Escondido
Imperial Beach
La Mesa
Lemon Grove
National City
Oceanside
Poway
San Diego
San Marcos
Santee
Solana Beach
Vista
and
County of San Diego

ADVISORY MEMBERS

Imperial County
California Department
of Transportation
Metropolitan
Transit System
North San Diego County
Transit Development Board
United States
Department of Defense
San Diego
Unified Port District
San Diego County
Water Authority
Baja California/Mexico

The FasTrak® Progress Report is prepared on a quarterly basis and is regularly distributed with the FasTrak® Project Management Team (PMT) agenda and notice. A copy of the Progress Report is published on SANDAG's FasTrak® PMT Web page.

Questions concerning the content of this report, or any other aspect of the FasTrak® operations may be directed to:

Staff Contact: Roxanne Sepehri
San Diego Association of Governments
401 B Street, Suite 800
San Diego, CA 92101-4231
(619) 710-4050
Roxanne.Sepehri@sandag.org

To request this document or related reports in an alternative format, please call (619) 699-1900, (619) 699-1904 (TTY), or fax (619) 699-1905.

I-15 FASTRAK[®] PROJECT MANAGEMENT TEAM

January 15, 2013

ITEM #	RECOMMENDATION
1. OPERATIONS AND MAINTENANCE (Caltrans/Transcore/SANDAG) Discussion regarding maintenance and operational issues of the Interstate 15 (I-15) Express Lanes, moveable barrier operations, and FasTrak systems.	DISCUSSION
2. REGIONAL AND STATE ISSUES (HIGH OCCUPANCY VEHICLES/ HIGH OCCUPANCY TOLL /TOLL LANE) (Caltrans/Transcore/SANDAG) Discussion about state and regional events, laws, and regulations regarding High-Occupancy Vehicles (HOV), High-Occupancy Toll (HOT), and toll facilities, and the potential effect on the region.	DISCUSSION
3. CUSTOMER SERVICE (Caltrans/Transcore/SANDAG) Addressing customer concerns including customer service, feedback, and satisfaction with the I-15 Express Lanes.	INFORMATION
4. ENFORCEMENT PERFORMANCE MEASURES (California Highway Patrol) Discussion regarding violation enforcement of the I-15 Express Lanes facility.	DISCUSSION
+5. FASTRAK ACTIVITY REPORT (SANDAG) Report on FasTrak activity including traffic volumes (HOV, Single-Occupancy Vehicle [SOV] and Total), revenue totals, and expense updates.	INFORMATION
6. FASTRAK CONSTRUCTION (SANDAG) Updates on FasTrak/HOT lane construction.	INFORMATION
7. ADJOURNMENT AND NEXT MEETING The next I-15 Project Management Team meeting will be held on April 16, 2013, from 9:30 - 11:00 a.m.	INFORMATION

+ next to an agenda item indicates an attachment

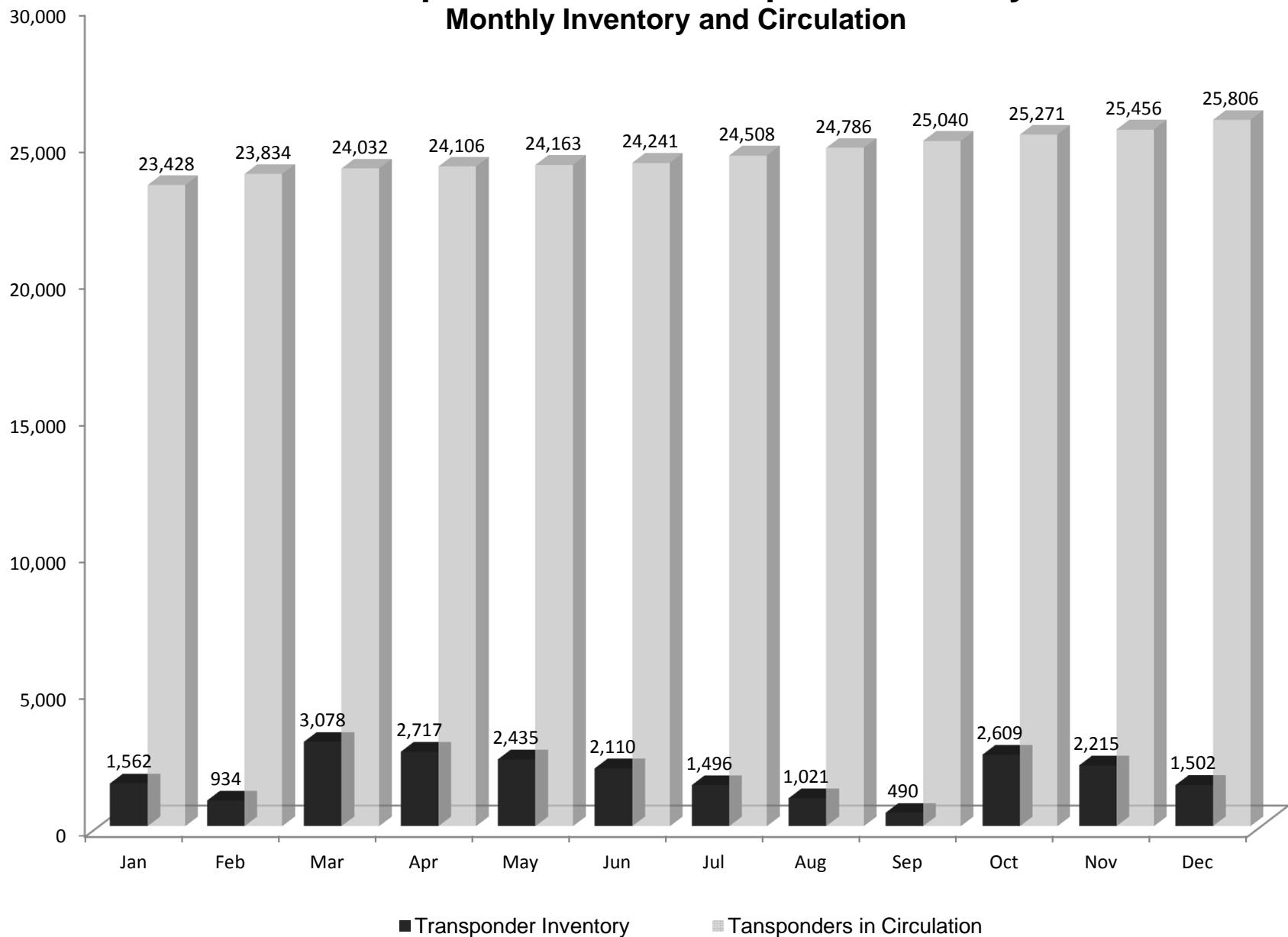
I-15 FasTrak® Project Management Team

Agenda Attachments

Tuesday, January 15, 2013

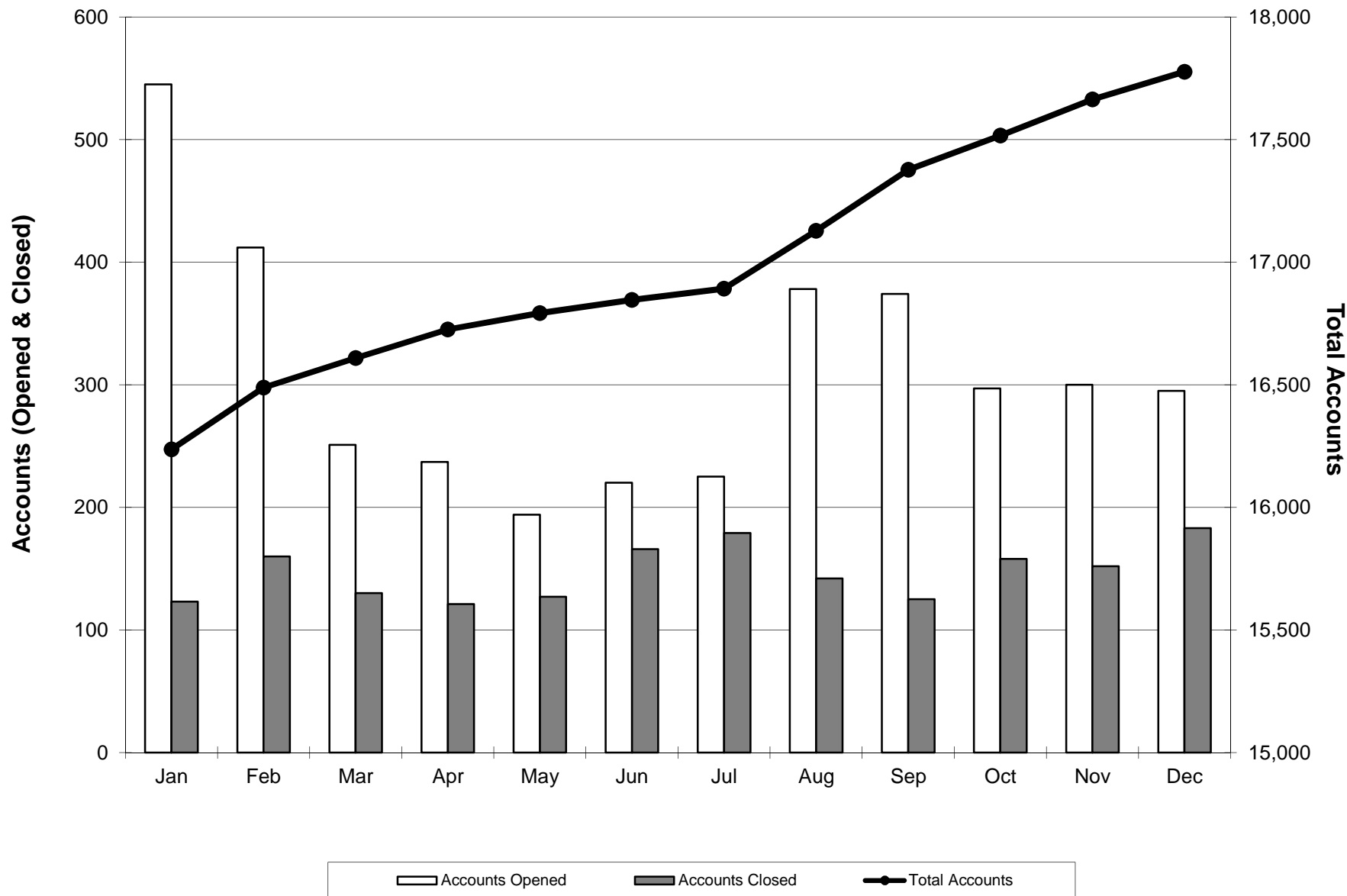
1. I-15 Express Lanes – Transponder Activity by Month Chart
 - A new order of 2,560 transponders due on January 23rd
2. I-15 Express Lanes – Opened, Closed & Total Accounts by Month Chart
3. I-15 Express Lanes Revenue by Intermediate Access Point
4. I-15 Express Lanes Average Daily Traffic Charts by Location (Miramar Way, Miramar Road, Mira Mesa Boulevard, Mercy Road, Poway Toll Plaza, Carmel Mountain Road, Bernardo Center Drive, Via Rancho Parkway, Center City Parkway, and Felicita Road)
 - Felicita Toll Plaza – The data in February and March are off due to laser failure
 - Center City Plaza – certain days in May have been omitted due to laser failure
5. I-15 Express Lanes Traffic Summary by Location – October through December 2012
6. I-15 Express Lanes 2012 Fiscal Year-to-Date California Highway Patrol Enforcement – October through December 2012

I-15 Epress Lanes - Transponder Activity Monthly Inventory and Circulation



I-15 Express Lanes - Monthly Account Activity

Monthly Opened, Closed & Total Accounts



I-15 Express Lanes SOV Vehicles by Intermediate Access Point

Month: October
Direction: Northbound

Sum of SOV Vehicles	EXIT PLAZA										Grand Total
	20 - Miramar Road NB	24 - SR 56 NB Exit	26 - SR 56 NB Entry	28 - Camino del Norte NB Entry	48 - Rancho Bernardo Transit	30 - Duenda Rd NB Entry	32 - Del Lago NB Exit	34 - Centre City NB Entry	37 - Hale Ave NB	39 - SR 78	
ENTRY PLAZA											
16 - SR 163 NB Entrance	1101	4407	2955	722	959	861	1381	1994	660	3924	18964
17 - I-15 NB Entrance	1817	4477	4250	1041	1191	1374	1221	4293	931	8788	29383
18 - Ammo Road NB	2069	2441	3079	674	610	788	710	2068	403	4677	17519
20 - Miramar Road NB		1026	2880	370	153	454	311	944	151	1995	8284
21 - Mira Mesa Blvd NB		1471	981	326	278	492	349	1091	145	1866	6999
25 - Sabre Springs Transit			339	52	53	74	202	323	152	481	1676
26 - SR 56 NB Entry				1414	526	1451	924	2973	474	4467	12229
28 - Camino del Norte NB Entry					441	2266	624	2029	285	2030	7675
48 - Rancho Bernardo Transit						760	483	980	209	887	3319
30 - Duenda Rd NB Entry							825	2598	438	2342	6203
33 - Del Lago NB Entry								2344	583	1470	4397
34 - Centre City NB Entry									1335	1948	3283
Grand Total	4987	13822	14484	4599	4211	8520	7030	21637	5766	34875	119931

Month: October
Direction: Southbound

Sum of SOV Vehicles	EXIT PLAZA										Grand Total	
	42 - 9th Ave SB	44 - Del Lago SB Exit	47 - Duenda Rd SB Entry	48 - Rancho Bernardo Transit	50 - Camino del Norte SB Entry	25 - Sabre Springs Transit	52 - SR 56 SB Entry	54 - Poway Rd SB	56 - Mercy Rd - 1 SB	60 - Miramar Rd SB		
ENTRY PLAZA												
25 - Sabre Springs Transit						941	1110	283	324	261	1652	2520
39 - SR 78	2097	1056	3624	1453	4212	2886	2885	3801	2886	2885	21934	45999
40 - Hale Ave SB	1284	345	420	244	433	244	82	350	299	254	2057	6012
42 - 9th Ave SB		697	2303	433	1665	237	821	1174	944	1027	5295	14596
45 - Del Lago SB Entry			1425	561	846	204	158	659	612	372	4142	8979
47 - Duenda Rd SB Entry				494	2350	172	1163	967	940	683	4486	11255
48 - Rancho Bernardo Transit					492	95	83	393	385	327	3659	5434
50 - Camino del Norte SB Entry						93	1641	1819	1984	1226	7224	13987
52 - SR 56 SB Entry								1954	2424	1487	10909	16774
54 - Poway Rd SB									7219	2002	5561	14782
56 - Mercy Rd - 1 SB										80	502	582
57 - Mercy RD - 2 SB										635	1734	2369
60 - Miramar Rd SB											4037	4037
Grand Total	3381	2098	7772	3185	9998	1986	5058	11400	18017	11239	73192	147326

I-15 Express Lanes SOV Vehicles by Intermediate Access Point

Month: November
Direction: Northbound

Sum of SOV Vehicles	EXIT PLAZA										
	20 - Miramar Road NB	24 - SR 56 NB Exit	26 - SR 56 NB Entry	28 - Camino del Norte NB Entry	48 - Rancho Bernardo Transit	30 - Duenda Rd NB Entry	32 - Del Lago NB Exit	34 - Centre City NB Entry	37 - Hale Ave NB	39 - SR 78	Grand Total
ENTRY PLAZA											
16 - SR 163 NB Entrance	1033	4275	2663	633	1025	773	1319	1721	740	3757	17939
17 - I-15 NB Entrance	1834	4418	4166	989	1098	1264	1223	3920	1039	8491	28442
18 - Ammo Road NB	1808	1980	2764	531	433	674	561	1590	369	3905	14615
20 - Miramar Road NB		1081	2874	409	171	436	359	910	182	2067	8489
21 - Mira Mesa Blvd NB		1317	701	279	202	363	342	963	185	1700	6052
25 - Sabre Springs Transit			326	30	70	53	217	260	169	428	1553
26 - SR 56 NB Entry				1268	451	1301	904	2646	490	4125	11185
28 - Camino del Norte NB Entry					396	2110	616	1936	360	2214	7632
48 - Rancho Bernardo Transit						603	502	755	253	845	2958
30 - Duenda Rd NB Entry							815	2439	502	2444	6200
33 - Del Lago NB Entry								2294	612	1513	4419
34 - Centre City NB Entry									1302	2197	3499
Grand Total	4675	13071	13494	4139	3846	7577	6858	19434	6203	33686	112983

Month: November
Direction: Southbound

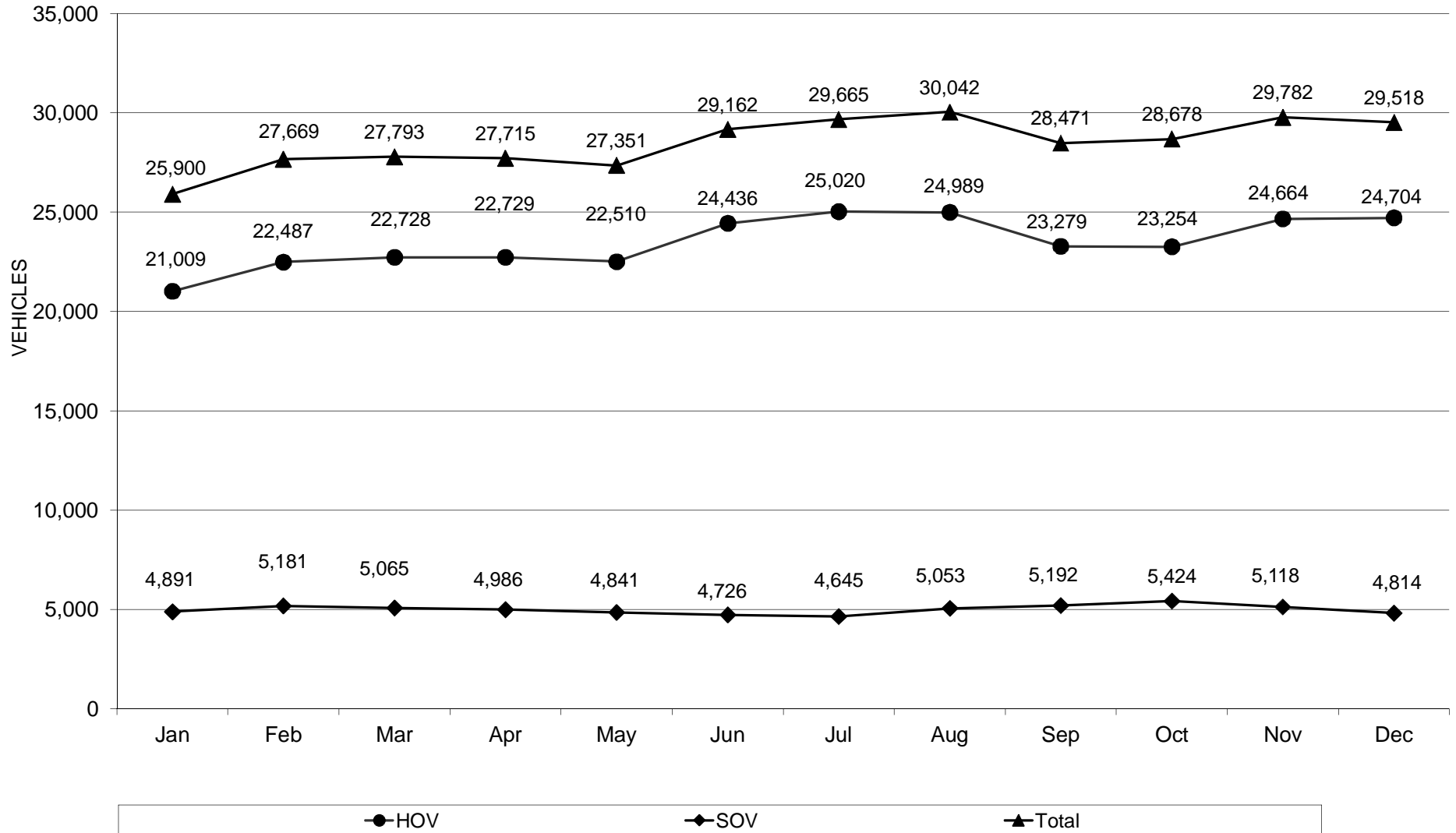
Sum of SOV Vehicles	EXIT PLAZA												
	ENTRY PLAZA	42 - 9th Ave SB	44 - Del Lago SB Exit	47 - Duenda Rd SB Entry	48 - Rancho Bernardo Transit	50 - Camino del Norte SB Entry	25 - Sabre Springs Transit	52 - SR 56 SB Entry	54 - Poway Rd SB	56 - Mercy Rd - 1 SB	60 - Miramar Rd SB	16 - SR 163 NB Entrance	Grand Total
25 - Sabre Springs Transit													
39 - SR 78	1969	1080	3494	1339	3911	841	1012	3543	3196	2505		19147	42037
40 - Hale Ave SB	1150	348	373	213	375	225	82	298	315	214		1662	5255
42 - 9th Ave SB		694	2110	370	1407	197	685	972	1017	836		4514	12802
45 - Del Lago SB Entry				1365	484	736	197	133	588	643	301	3497	7944
47 - Duenda Rd SB Entry					450	2050	128	910	801	895	574	3735	9543
48 - Rancho Bernardo Transit						387	98	40	334	370	259	3151	4639
50 - Camino del Norte SB Entry							121	1444	1500	1752	909	6150	11876
52 - SR 56 SB Entry									1721	2234	1201	9111	14267
54 - Poway Rd SB										7045	1556	4680	13281
56 - Mercy Rd - 1 SB											97	490	587
57 - Mercy Rd - 2 SB											476	1487	1963
60 - Miramar Rd SB												5661	5661
Grand Total	3119	2122	7342	2856	8866	1807	4306	10022	17719	9153	64857	132169	

I-15 Express Lanes SOV Vehicles by Intermediate Access Point

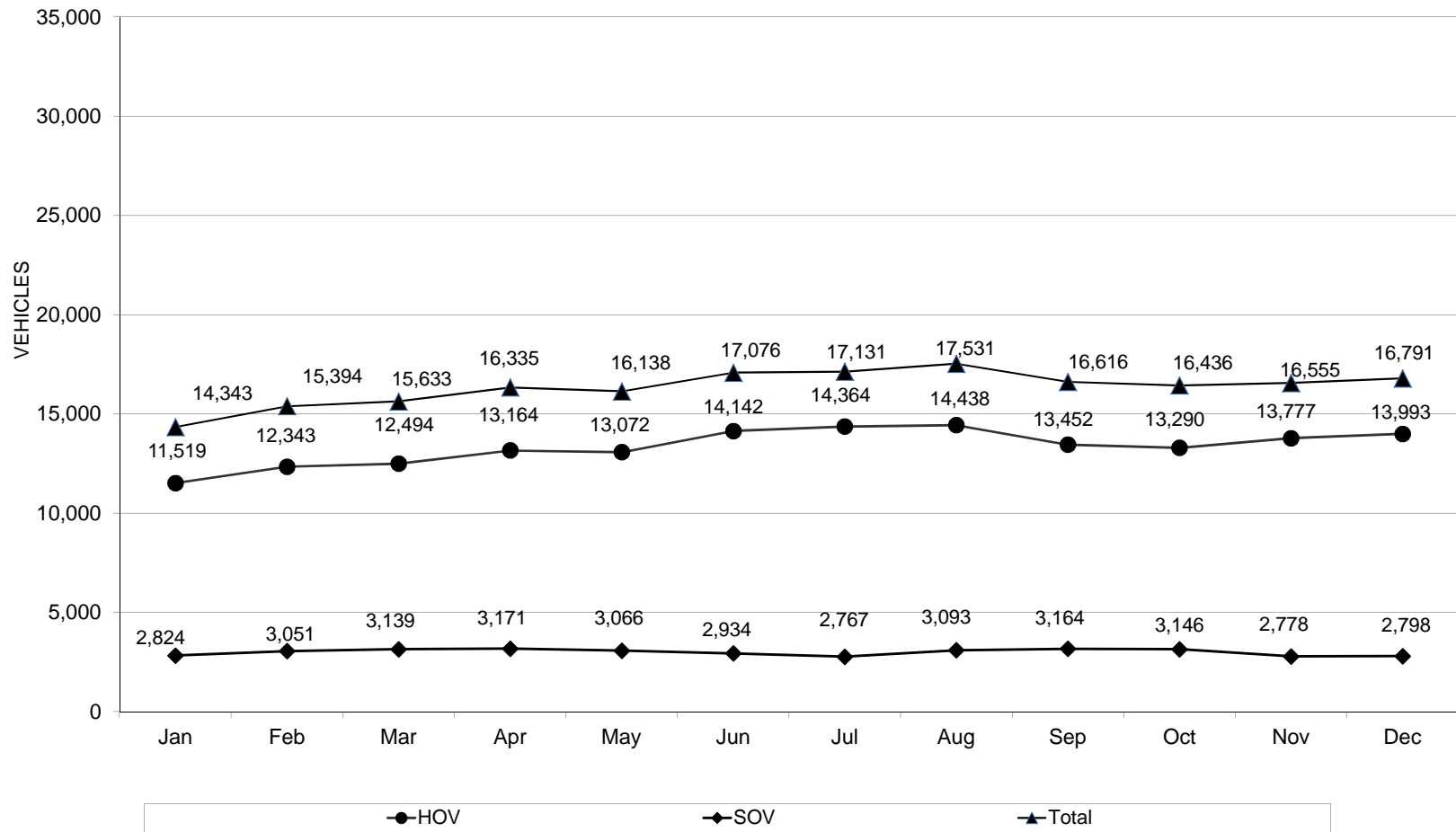
Month	December										
Direction	Northbound										
Sum of SOV Vehicles	EXIT PLAZA										
	20 - Miramar Road NB	24 - SR 56 NB Exit	26 - SR 56 NB Entry	28 - Camino del Norte NB Entry	48 - Rancho Bernardo Transit	30 - Duenda Rd NB Entry	32 - Del Lago NB Exit	34 - Centre City NB Entry	37 - Hale Ave NB	39 - SR 78	Grand Total
ENTRY PLAZA											
16 - SR 163 NB Entrance	1030	3896	2294	557	895	843	1108	1559	676	3423	16281
17 - I-15 NB Entrance	1660	4007	3850	827	1004	1358	1040	3530	854	7694	25824
18 - Ammo Road NB	1749	1826	2509	525	412	701	534	1543	349	3727	13875
20 - Miramar Road NB		792	2442	262	112	412	272	765	154	1838	7049
21 - Mira Mesa Blvd NB		1213	658	219	182	385	309	899	149	1549	5563
25 - Sabre Springs Transit			284	32	66	93	202	229	125	395	1426
26 - SR 56 NB Entry				1322	394	1430	786	2396	436	3728	10492
28 - Camino del Norte NB Entry					452	1884	575	1716	318	1905	6850
48 - Rancho Bernardo Transit						568	422	647	220	696	2553
30 - Duenda Rd NB Entry							934	2137	398	1986	5455
33 - Del Lago NB Entry								2861	708	1963	5532
34 - Centre City NB Entry									1217	2006	3223
Grand Total	4439	11734	12037	3744	3517	7674	6182	18282	5604	30910	104123

Month	December												
Direction	Southbound												
Sum of SOV Vehicles	EXIT PLAZA												
	ENTRY PLAZA	42 - 9th Ave SB	44 - Del Lago SB Exit	47 - Duenda Rd SB Entry	48 - Rancho Bernardo Transit	50 - Camino del Norte SB Entry	25 - Sabre Springs Transit	52 - SR 56 SB Entry	54 - Poway Rd SB	56 - Mercy Rd - 1 SB	60 - Miramar Rd SB	16 - SR 163 NB Entrance	Grand Total
25 - Sabre Springs Transit							194		191		175	1440	2000
39 - SR 78		2082	1137	3316	1194	3462	797	948	2942	2185	2488	18548	39099
40 - Hale Ave SB		1206	382	316	238	278	200	77	261	224	195	1705	5082
42 - 9th Ave SB			876	1966	300	1310	208	677	876	696	797	4460	12166
45 - Del Lago SB Entry				1557	492	715	236	127	491	459	297	3411	7785
47 - Duenda Rd SB Entry					387	2049	135	1001	675	629	654	3919	9449
48 - Rancho Bernardo Transit						428	117	62	256	204	207	2909	4183
50 - Camino del Norte SB Entry							122	1463	1257	1279	987	6238	11346
52 - SR 56 SB Entry									1341	1645	1302	9172	13460
54 - Poway Rd SB										6542	1796	5064	13402
56 - Mercy Rd - 1 SB											70	439	509
57 - Mercy RD - 2 SB											574	1536	2110
60 - Miramar Rd SB												2917	2917
Grand Total	3288	2395	7155	2611	8242	1815	4355	8293	14054	9542	61758	123508	

I-15 Express Lanes Traffic - Weekday Daily Average Miramar Way Toll Plaza

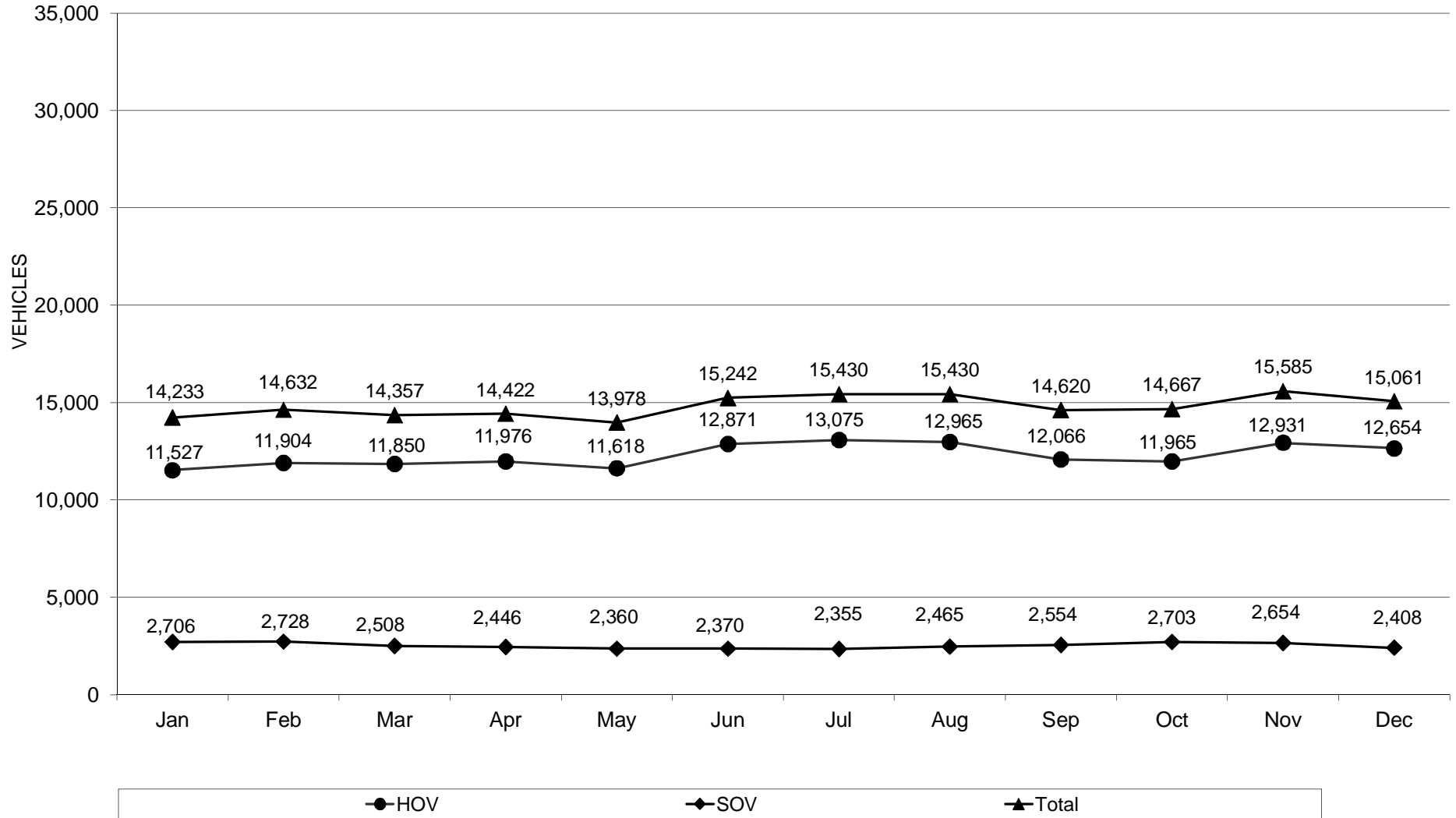


I-15 Express Lanes Traffic - Weekday Daily Average Miramar Rd (SB Only) Toll Plaza



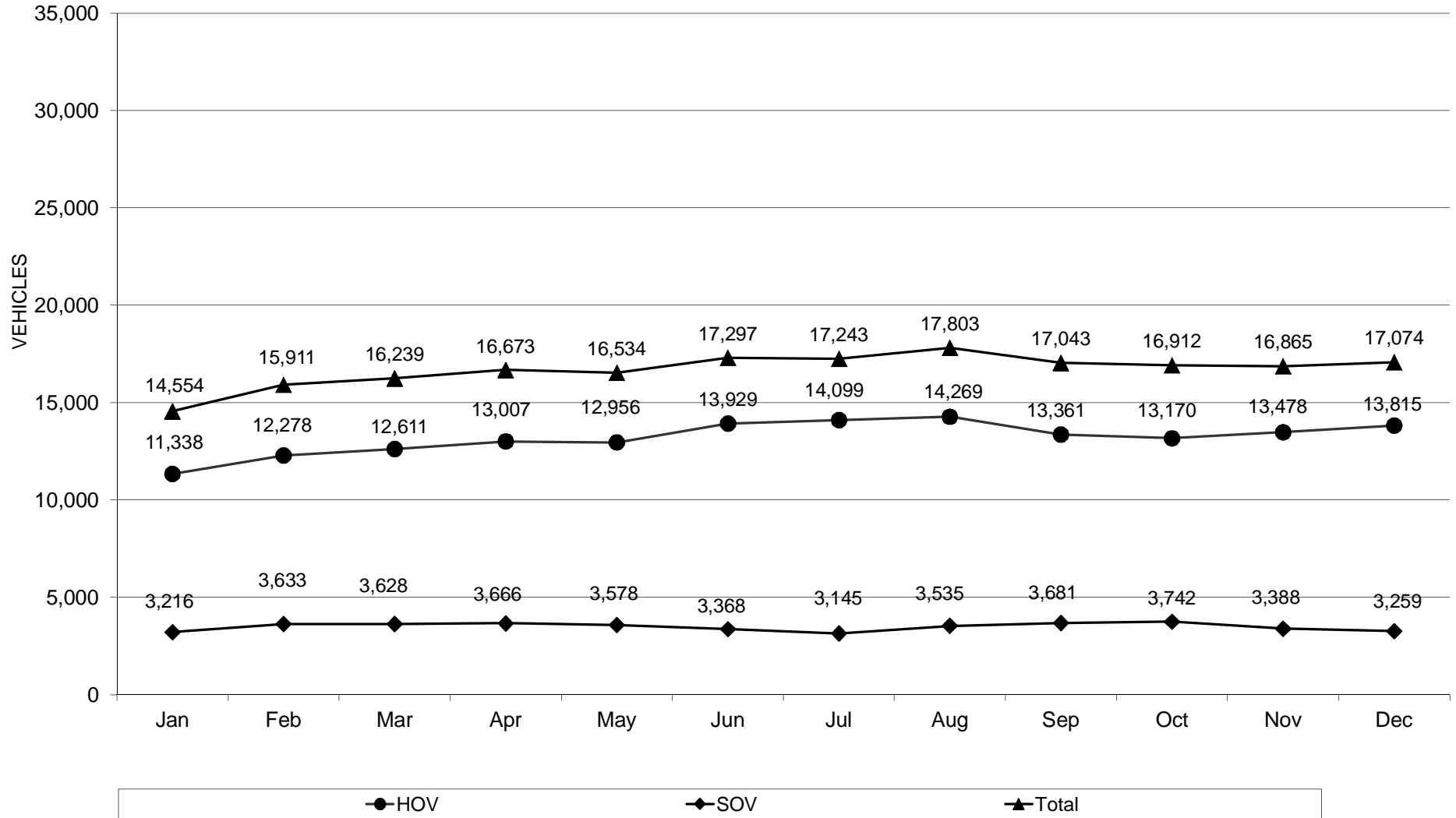
I-15 Express Lanes Traffic - Weekday Daily Average

Mira Mesa Blvd (NB Only) Toll Plaza

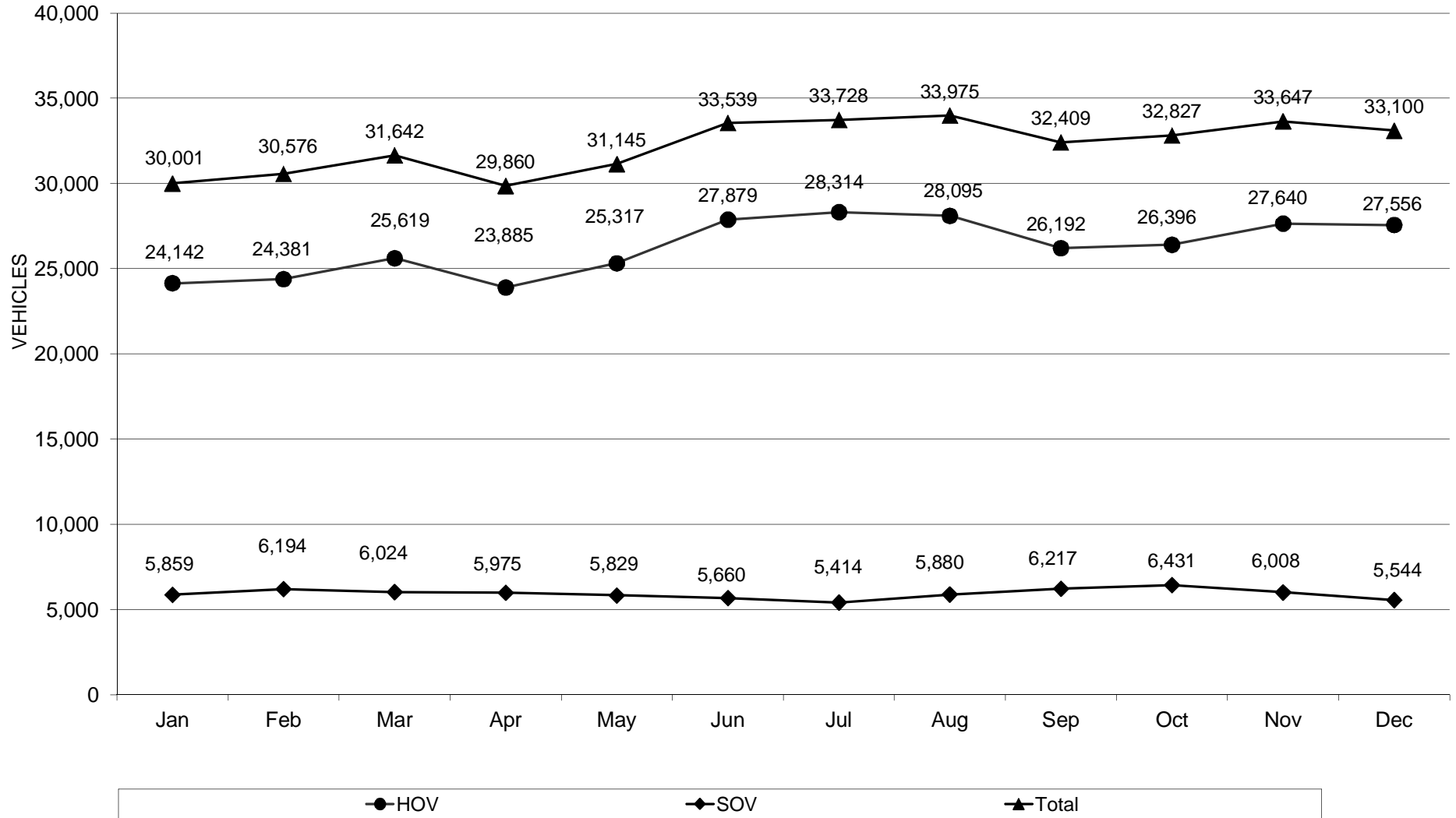


I-15 Express Lanes Traffic - Weekday Daily Average

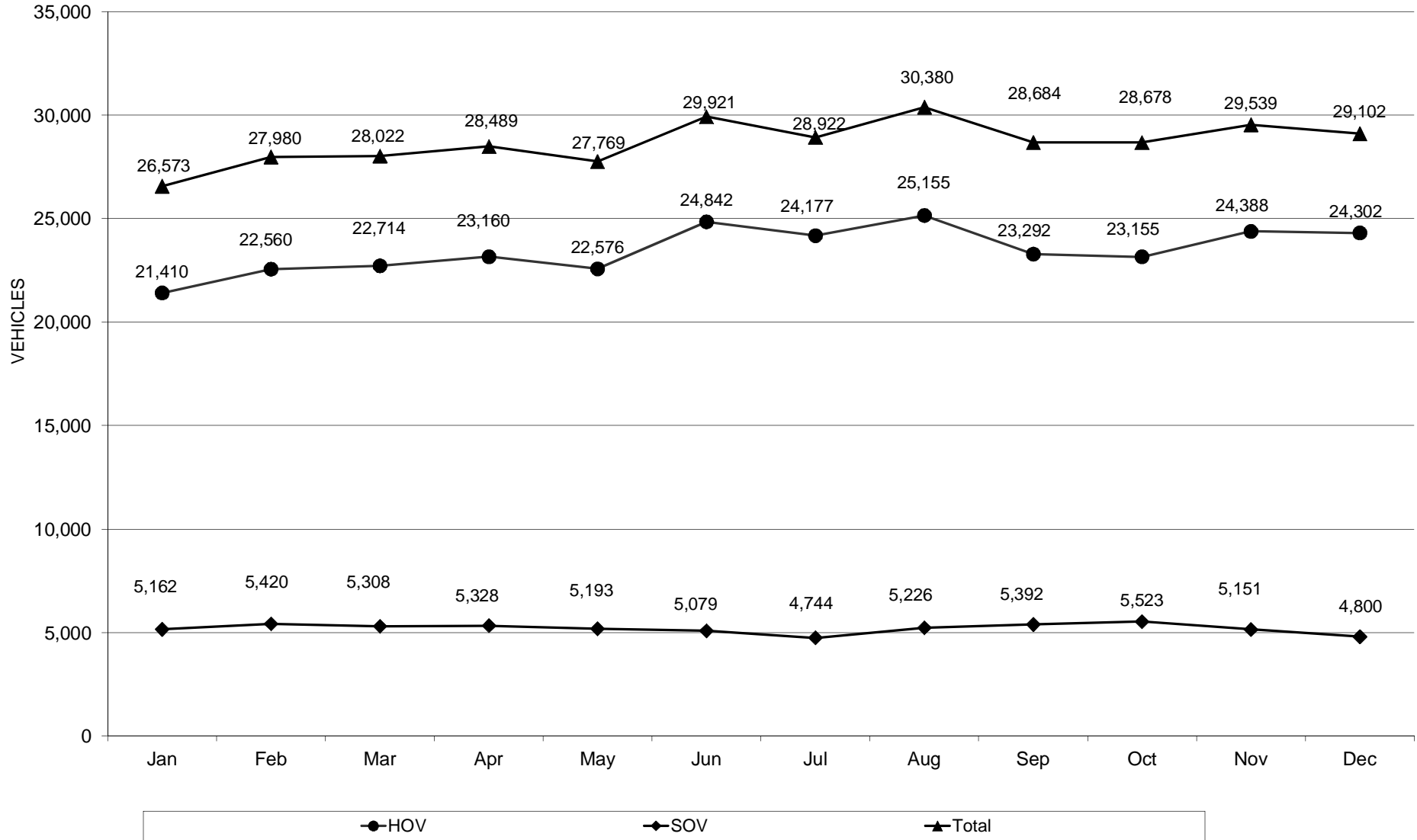
Mercy Rd (SB Only) Toll Plaza



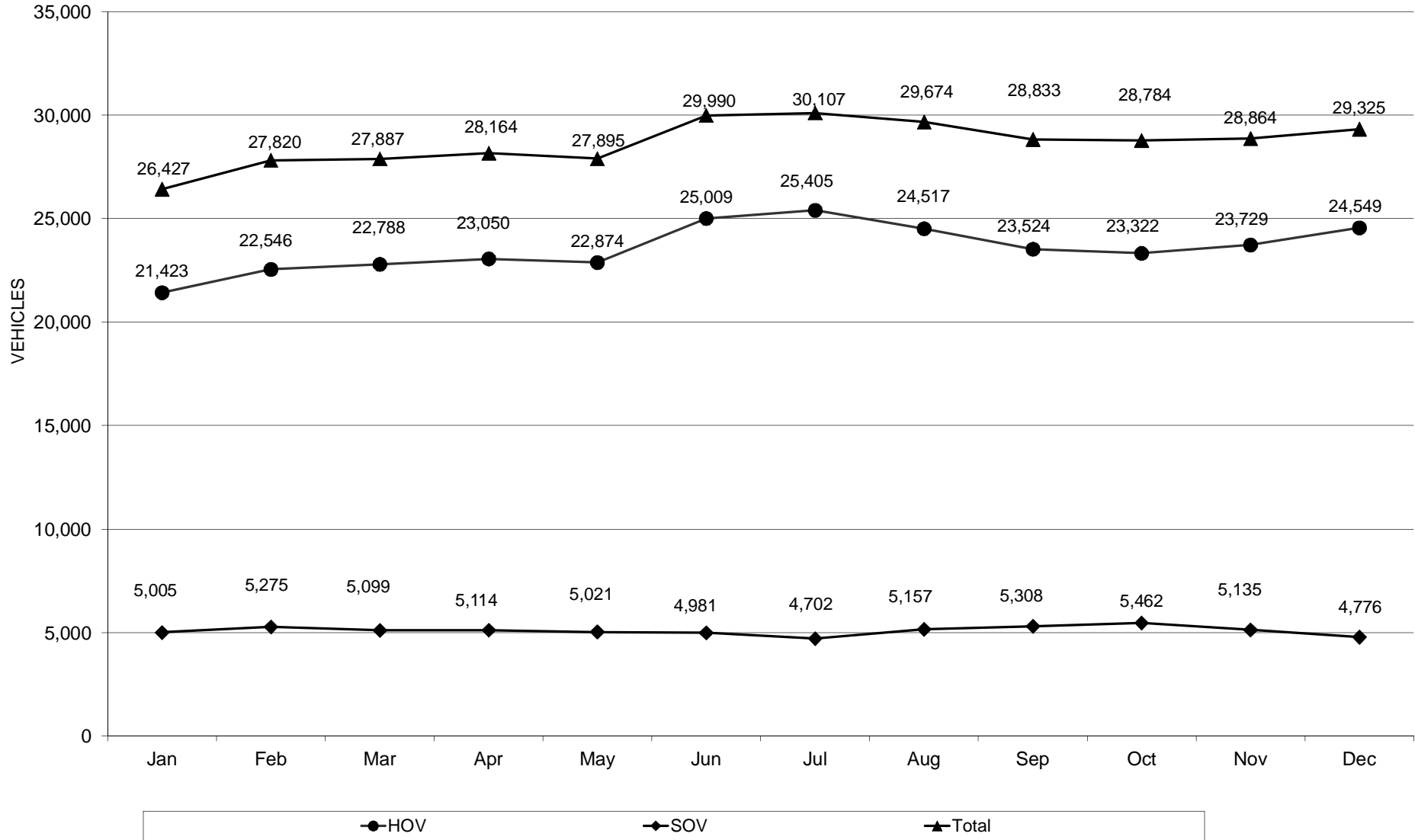
I-15 Express Lanes Traffic - Weekday Daily Average Poway Toll Plaza



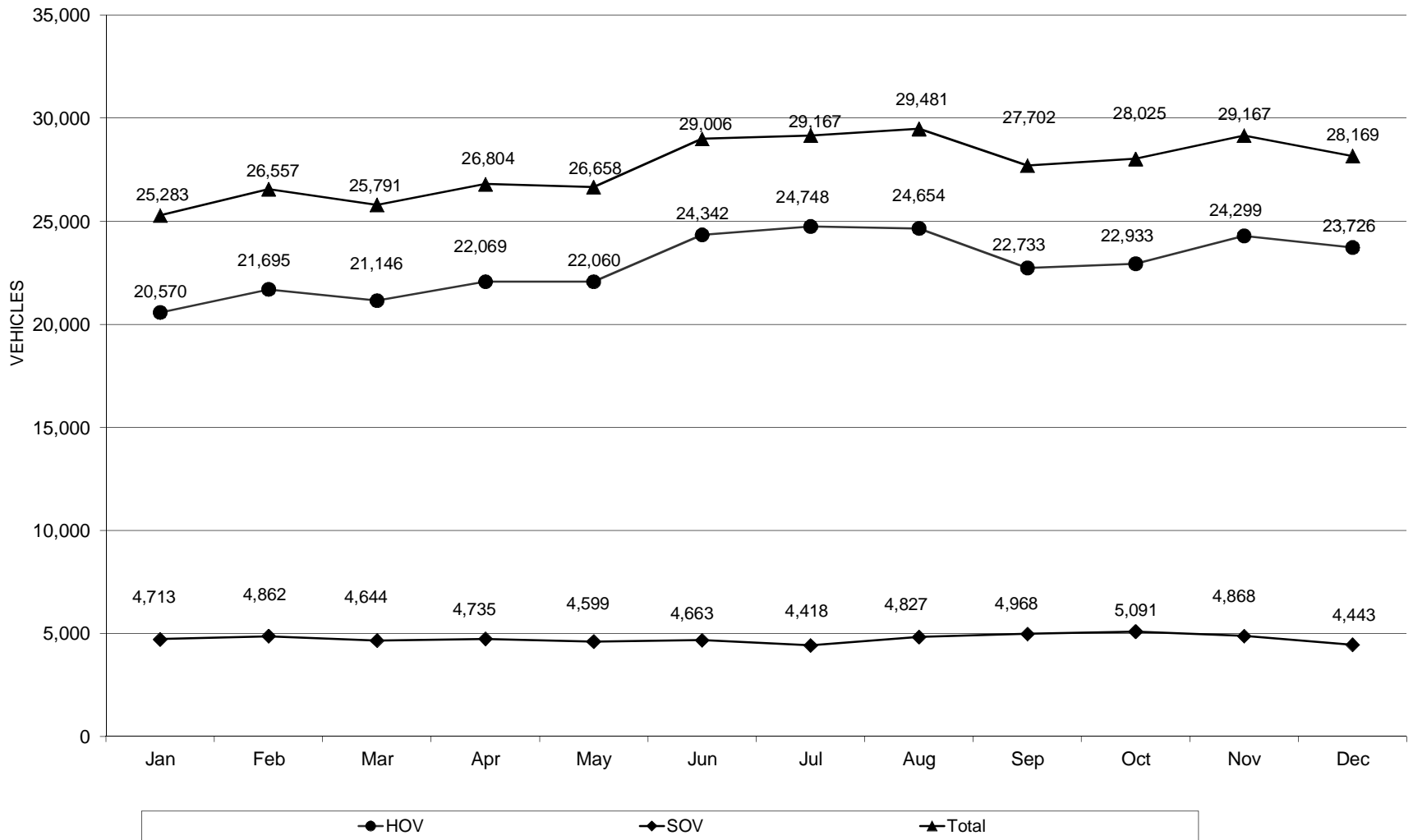
I-15 Express Lanes Traffic - Weekday Daily Average Carmel Mountain Road Toll Plaza



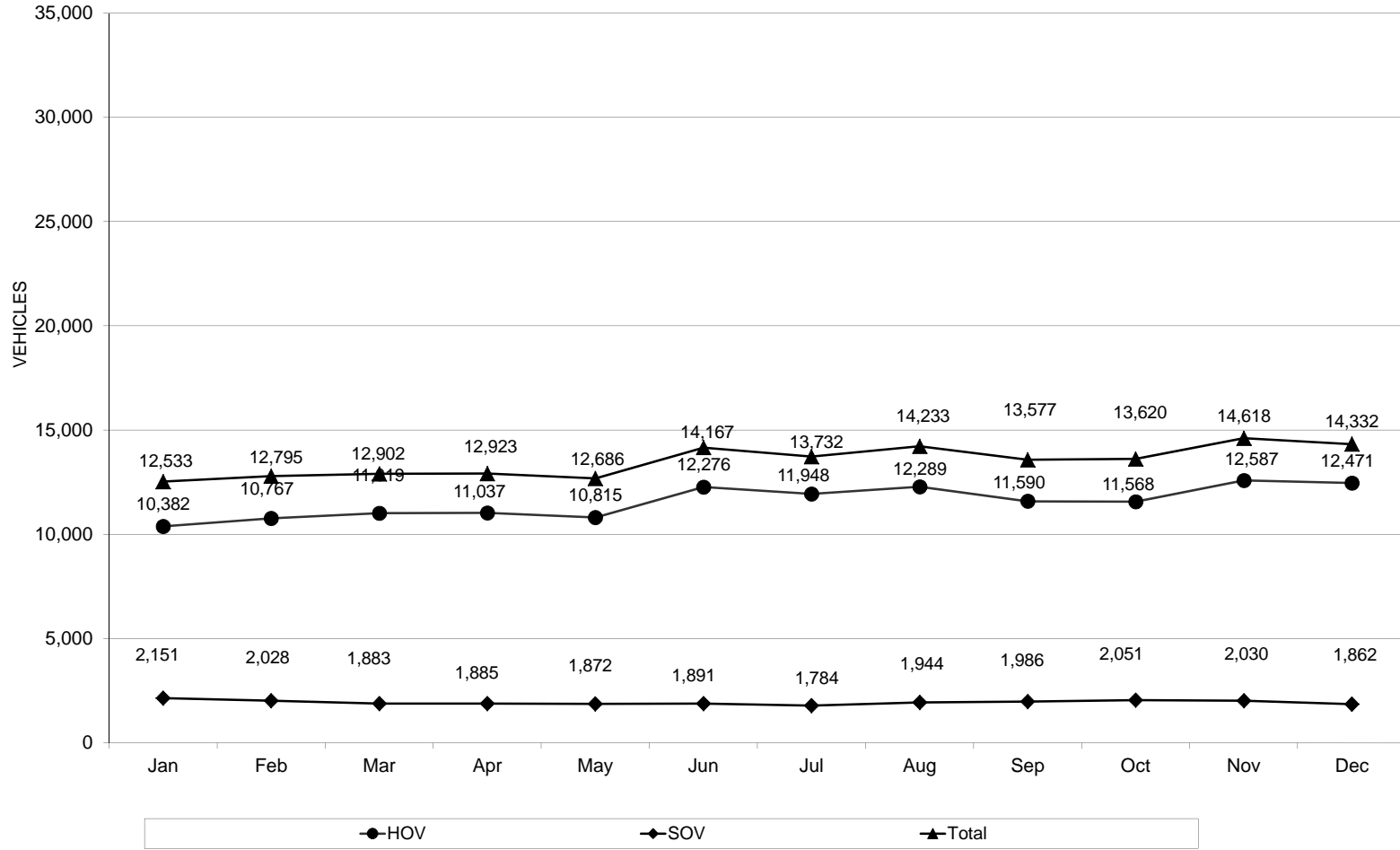
I-15 Express Lanes Traffic - Weekday Daily Average Bernardo Center Drive Toll Plaza



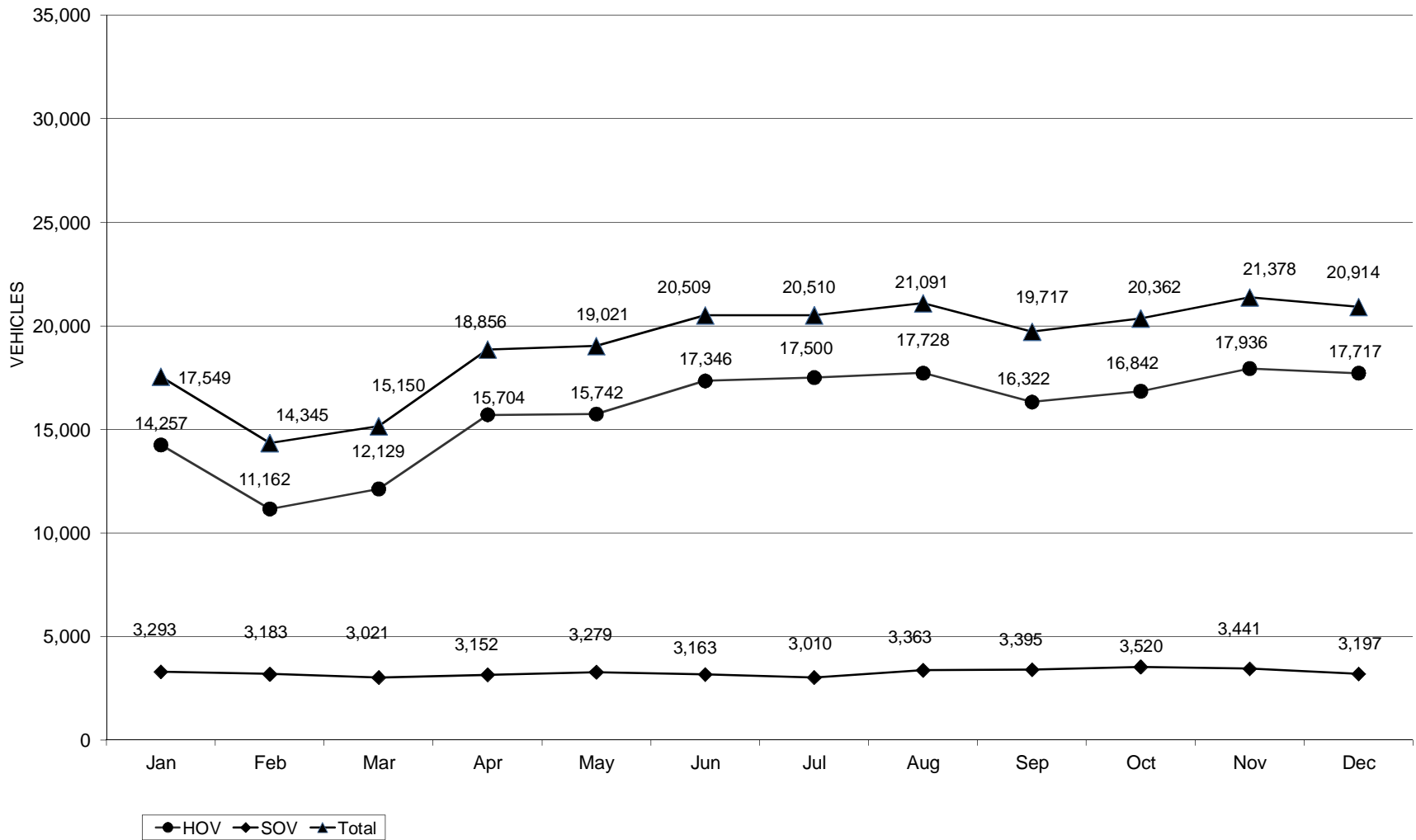
I-15 Express Lanes Traffic - Weekday Daily Average Via Rancho Pkwy Toll Plaza



I-15 Express Lanes Traffic - Weekday Daily Average Center City Pkwy (NB Only) Toll Plaza



I-15 Express Lanes Traffic - Weekday Daily Average Felicitia Rd Toll Plaza



Note: data in February and March are off due to laser failure

Monthly Weekday Averages by Location

Miramar Way			
Month	SOV	HOV	Total
October	5,424	23,254	28,678
November	5,118	24,664	29,782
December	4,814	24,704	29,518
Average	5,128	24,186	29,313
% ratios 17% 83%			

Mercy Road			
Month	SOV	HOV	Total
October	3,742	13,170	16,912
November	3,388	13,478	16,865
December	3,259	13,815	17,074
Average	3,470	13,478	16,948
% ratios 20% 80%			

Miramar Rd-SB Only			
Month	SOV	HOV	Total
October	3,146	13,290	16,436
November	2,778	13,777	16,555
December	2,798	13,993	16,791
Average	2,913	13,675	16,588
% ratios 18% 82%			

Poway Road			
Month	SOV	HOV	Total
October	6,431	26,396	32,827
November	6,008	27,640	33,647
December	5,544	27,556	33,100
Average	6,007	27,180	33,187
% ratios 18% 82%			

Mira Mesa Blvd-NB Only			
Month	SOV	HOV	Total
October	2,703	11,965	14,667
November	2,654	12,931	15,585
December	2,408	12,654	15,061
Average	2,592	12,506	15,098
% ratios 17% 83%			

Carmel Mountain Road			
Month	SOV	HOV	Total
October	5,523	23,155	28,678
November	5,151	24,388	29,539
December	4,800	24,302	29,102
Average	5,169	23,931	29,100
% ratios 18% 82%			

Bernardo Center Drive			
Month	SOV	HOV	Total
October	5,462	23,322	28,784
November	5,135	23,729	28,864
December	4,776	24,549	29,325
Average	5,135	23,847	28,982
% ratios 18% 82%			

Via Rancho Parkway			
Month	SOV	HOV	Total
October	5,091	22,933	28,025
November	4,868	24,299	29,167
December	4,443	23,726	28,169
Average	4,810	23,641	28,451
% ratios 17% 83%			

Center City-NB Only			
Month	SOV	HOV	Total
October	2,051	11,568	13,620
November	2,030	12,587	14,618
December	1,862	12,471	14,332
Average	1,983	12,196	14,179
% ratios 14% 86%			

Felicita Road			
Month	SOV	HOV	Total
October	3,520	16,842	20,362
November	3,441	17,936	21,378
December	3,197	17,717	20,914
Average	3,391	17,485	20,876
% ratios 16% 84%			

I-15 Express Lanes FY12 Citations and Verbals

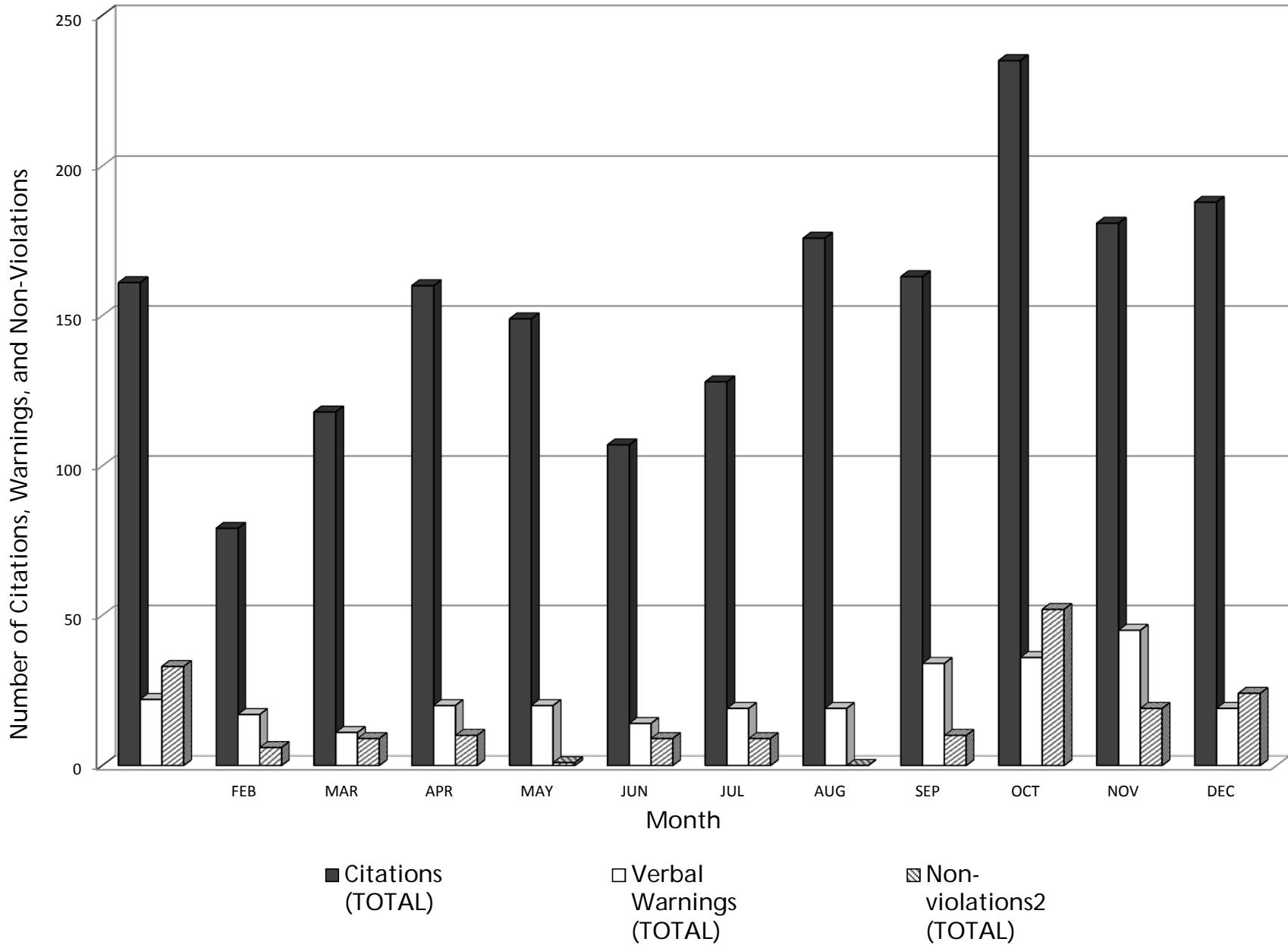
	CITATIONS	VERBALS	TOTAL HRS. ALLOT.	TOTAL HRS. WORKED	TOTAL BALANCE	ACCUM BALANCE	P.C. WORKED	MOTOR WORKED
January	161	22	110	132	-22	-22	104	28
February	79	17	110	84	26	4	76	8
March	118	11	110	112	-2	2	80	32
April	160	20	110	116	-6	-4	84	32
May	149	20	110	104	6	2	68	36
June	107	14	110	96	14	16	72	24
July	128	19	110	96	14	30	72	24
August	176	19	110	152	-42	-12	96	56
September	163	34	110	152	-42	-54	92	60
October	235	36	110	176	-66	-120	80	96
November	181	45	110	152	-42	-162	104	48
December	188	19	110	156	-46	-208	100	56
	1845	276	1320	1528	-208		1028	500

P.C = PATROL CAR

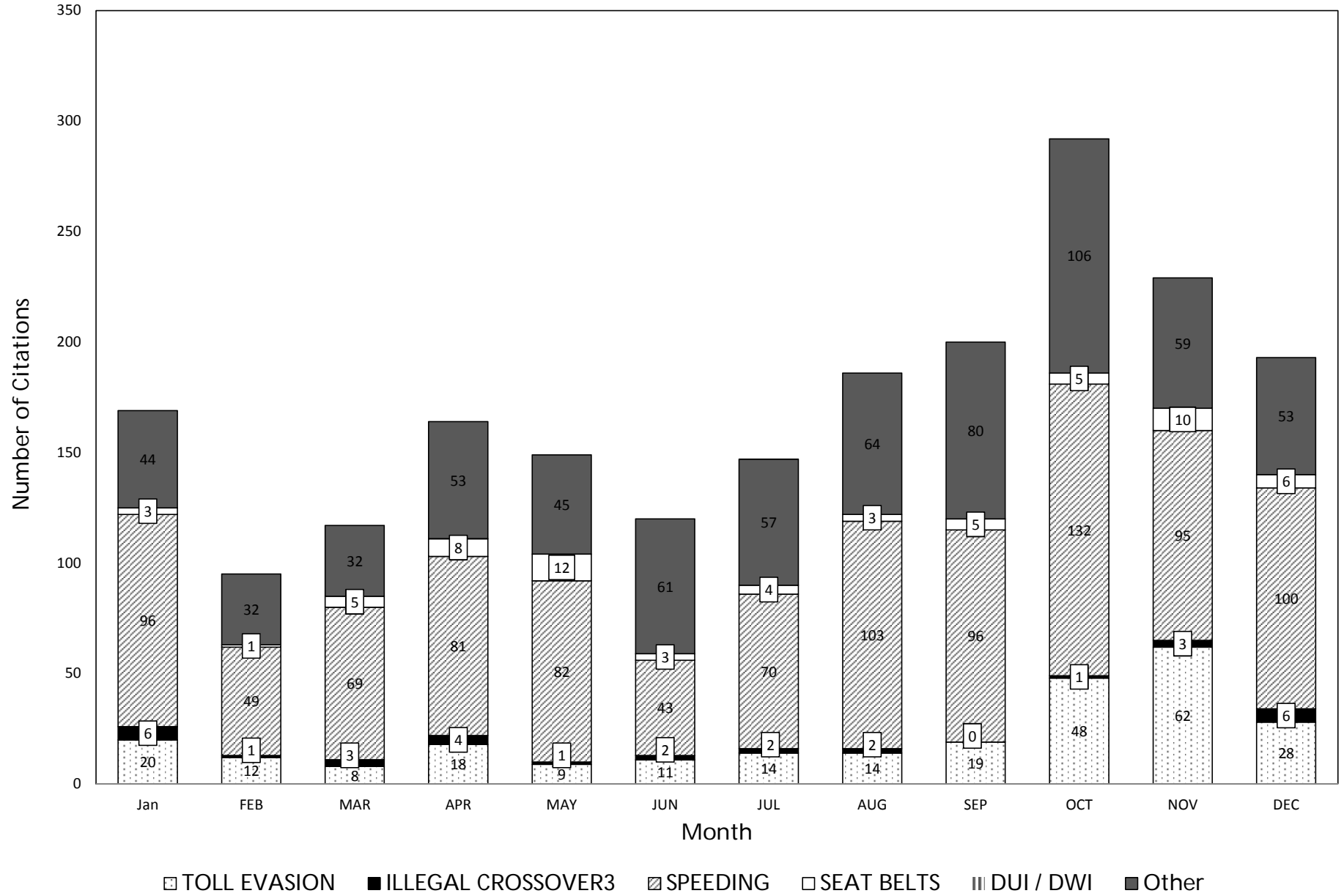
MOTOR. = MOTORCYCLE

Note: Some information from previous months may change. Some officers do not turn in overtime information in time for the report.

Total Citations, Warnings, and Non-Violations



Types of Moving Violation Citations



Measure of Enforcement Effectiveness

