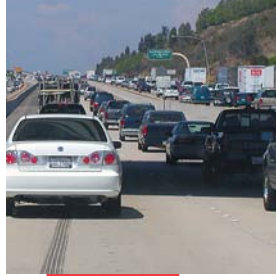




you



Open House

Wednesday, November 7, 2007

1 - 3 p.m.

The Service Bureau has expanded its capability to meet your research and data needs. Come learn about our products and services and how we can help you.

Service Bureau Areas of Expertise:

- Population, Housing and Employment Estimates
- Economic and Fiscal Impact Studies
- GIS Mapping and Analysis
- Transportation and Land Use Analysis
- Survey Design and Analysis
- Public Safety and Health Research

Refreshments will be served.

401 B Street, 7th Floor (Wells Fargo Building)
San Diego, California 92101

(We're one block away from the Trolley, or one hour parking validation in Wells Fargo parking structure will be provided.)



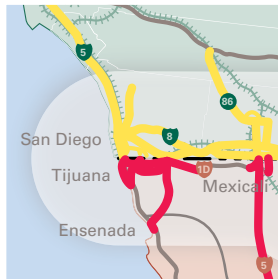
www.sandag.org/servicebureau



are



invited



RSVP is not required, but is appreciated.

Please contact Cheryl Mason at (619) 699-1951 or cma@sandag.org