

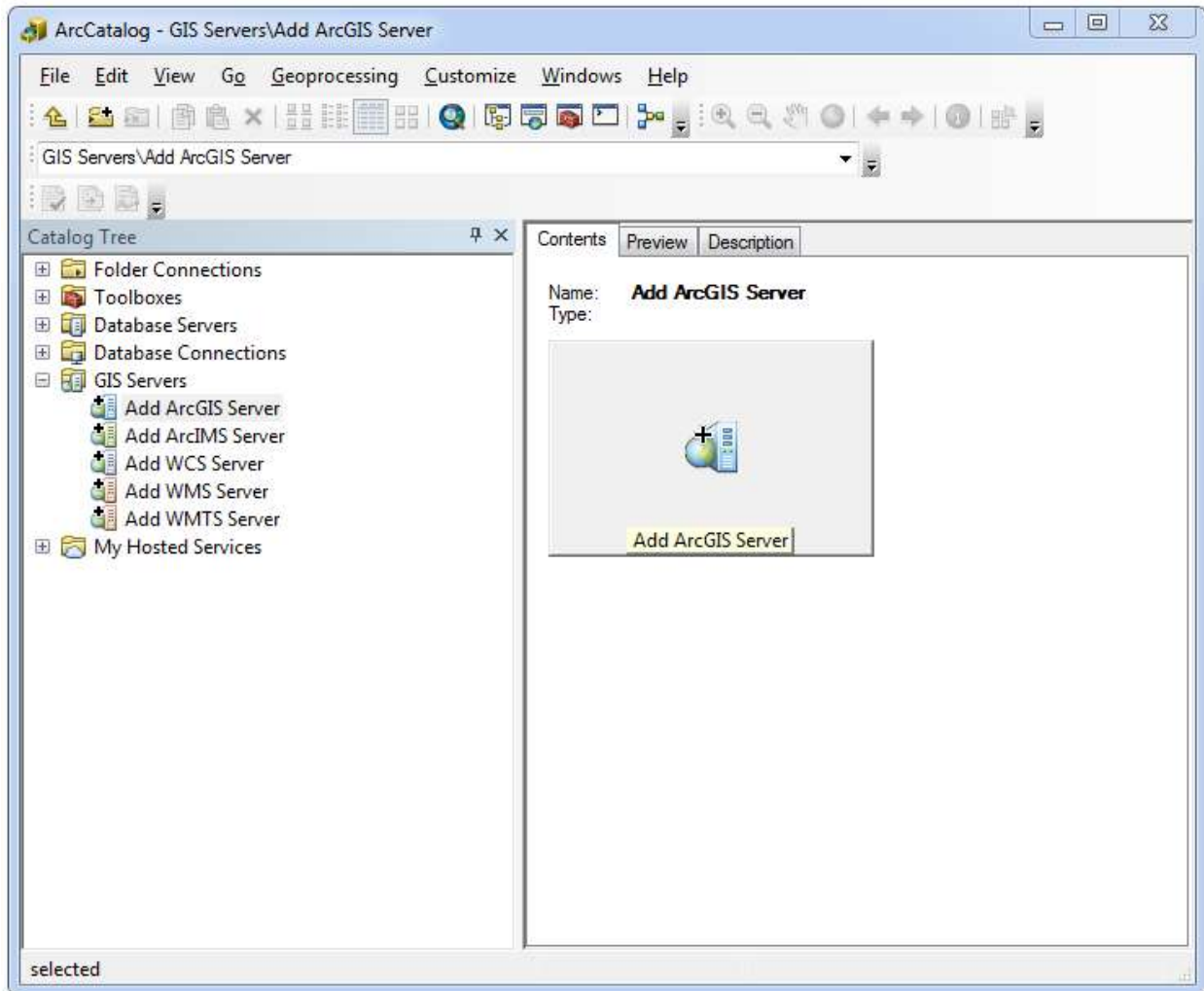
ArcGIS REST Services

ArcCatalog Connection Instructions

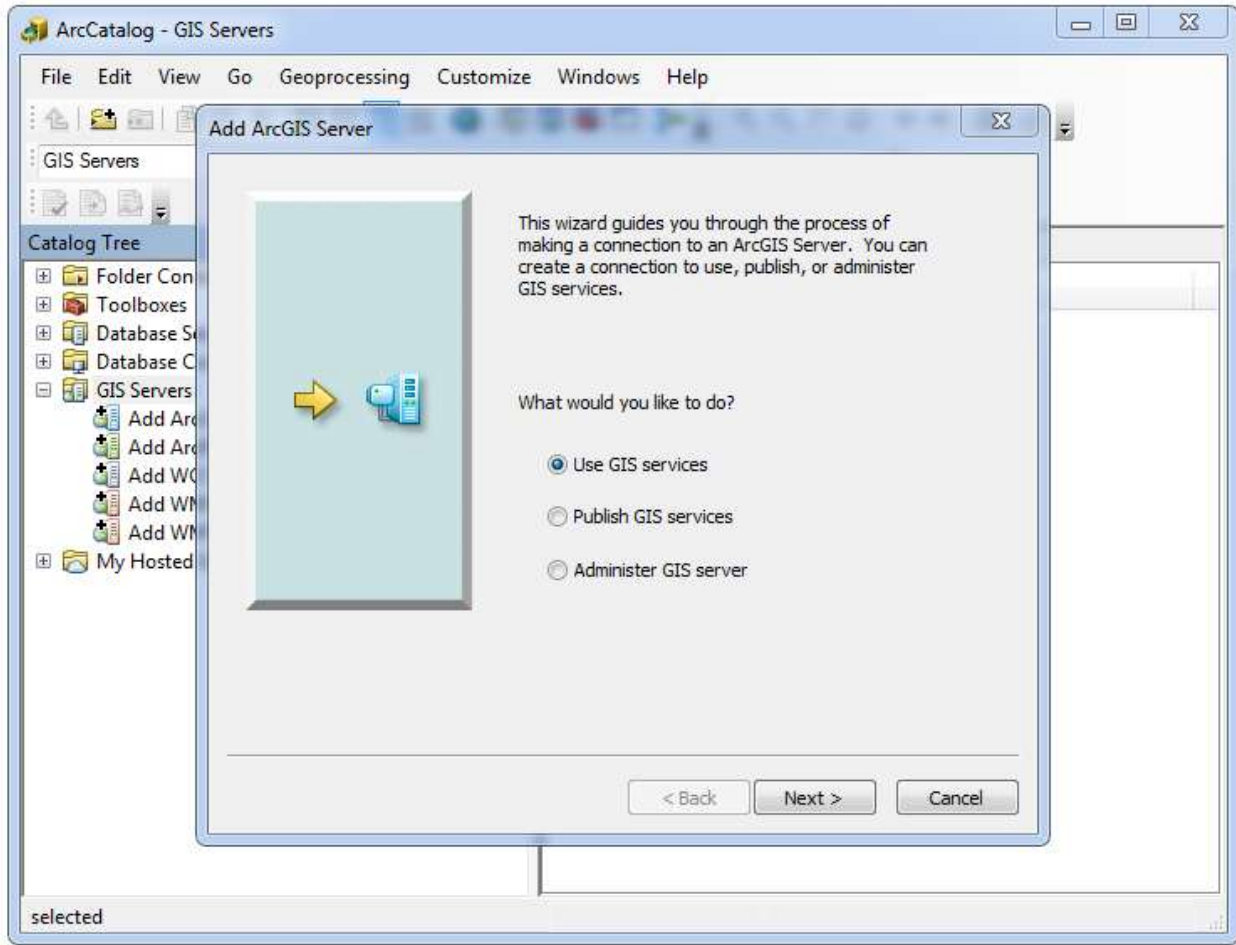
Users can connect to SANDAG’s ArcGIS Server services in ArcCatalog using these instructions. Connecting to the server provides users with frequently downloaded data now offered as map services and hosted by SANDAG. Follow the instructions below:



Open ArcCatalog and select “**GIS Servers**”, then “**Add ArcGIS Server**”

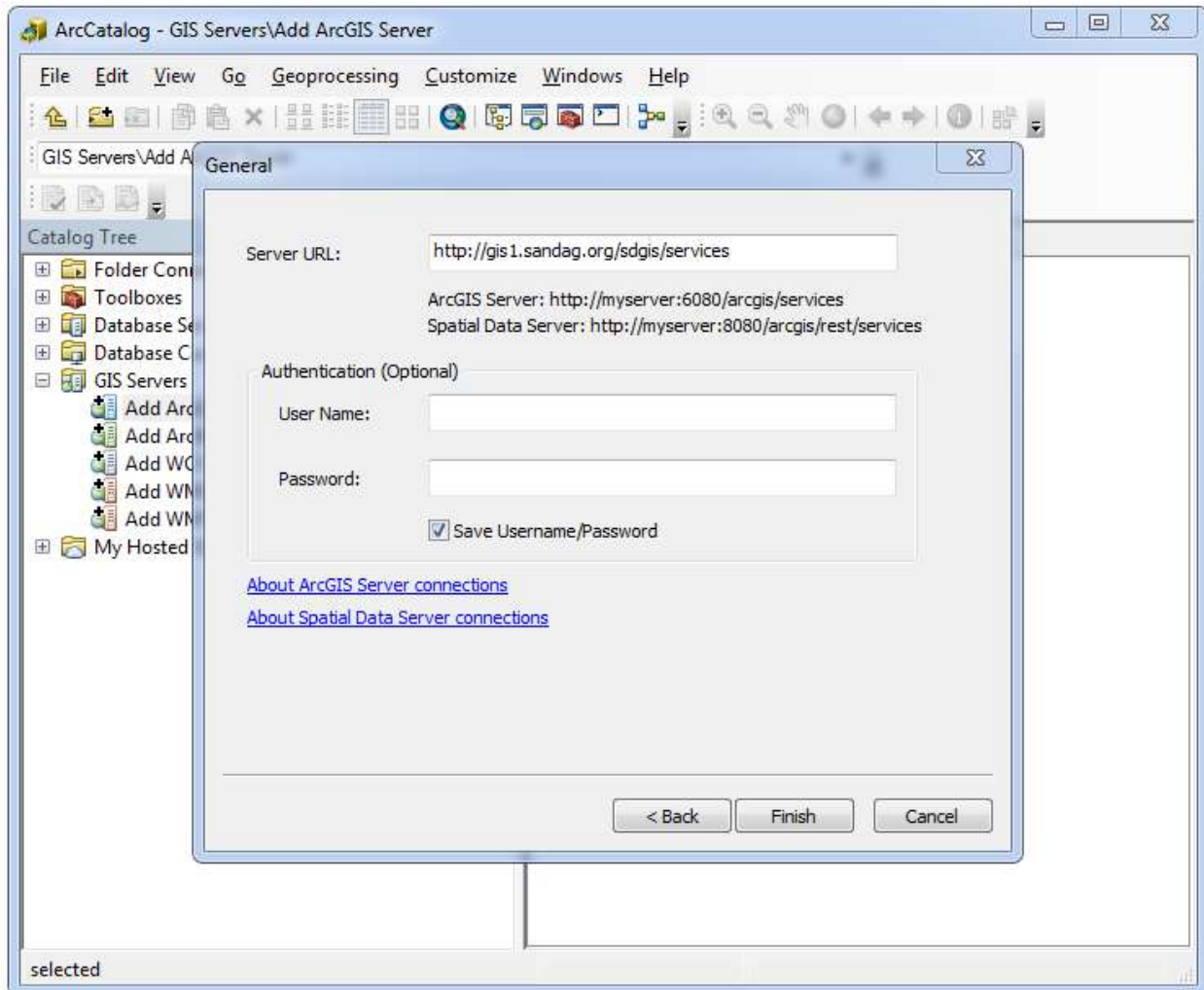


A new window will appear:



Select **"Use GIS services"** and click **"Next"**

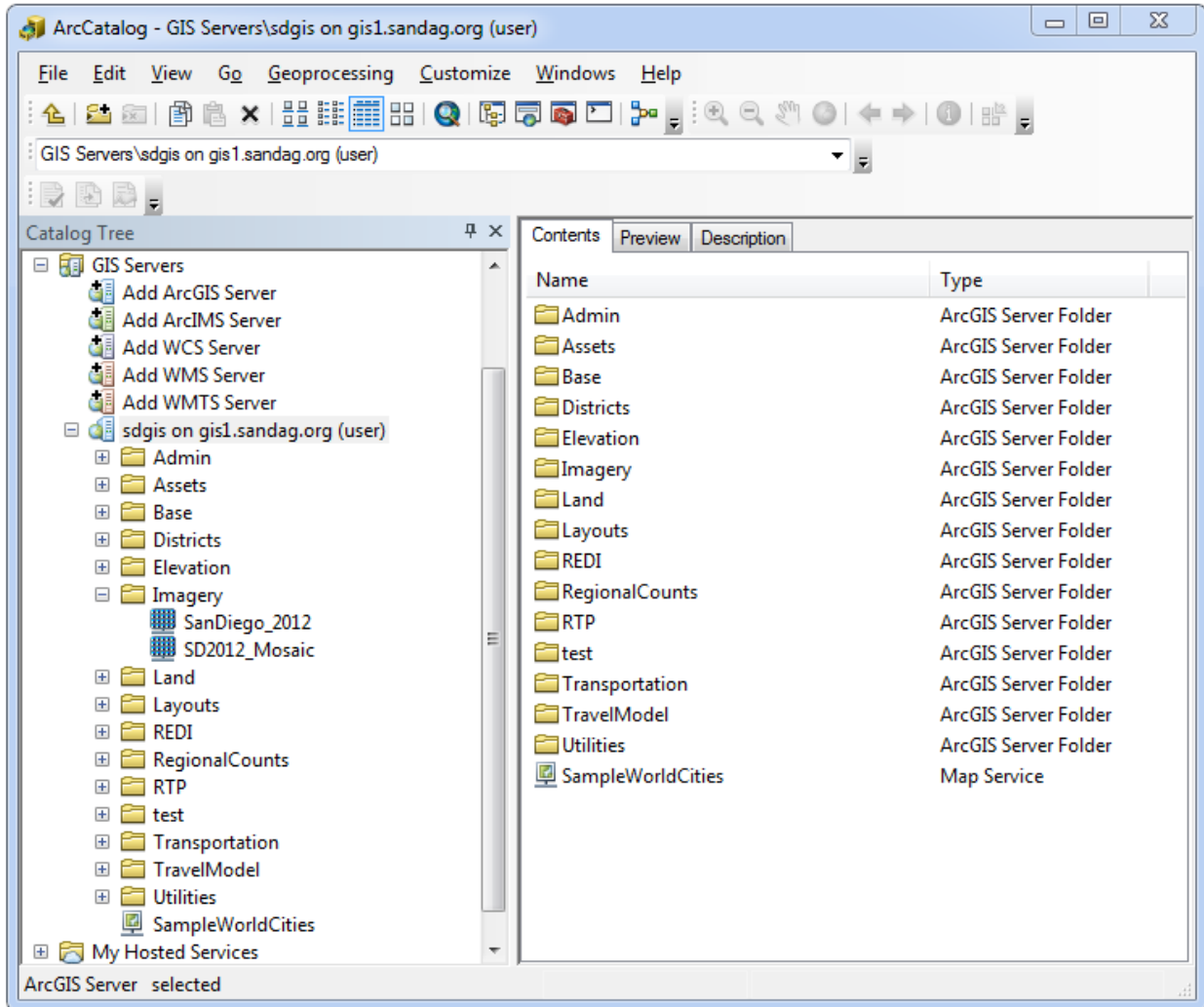
You will be asked to enter a server URL:



Type: <http://gis1.sandag.org/sdgis/services> and click **Finish**

(You do not need to enter a User Name or Password.)

You are now connected to SANDAG's ArcGIS Server services in ArcCatalog.

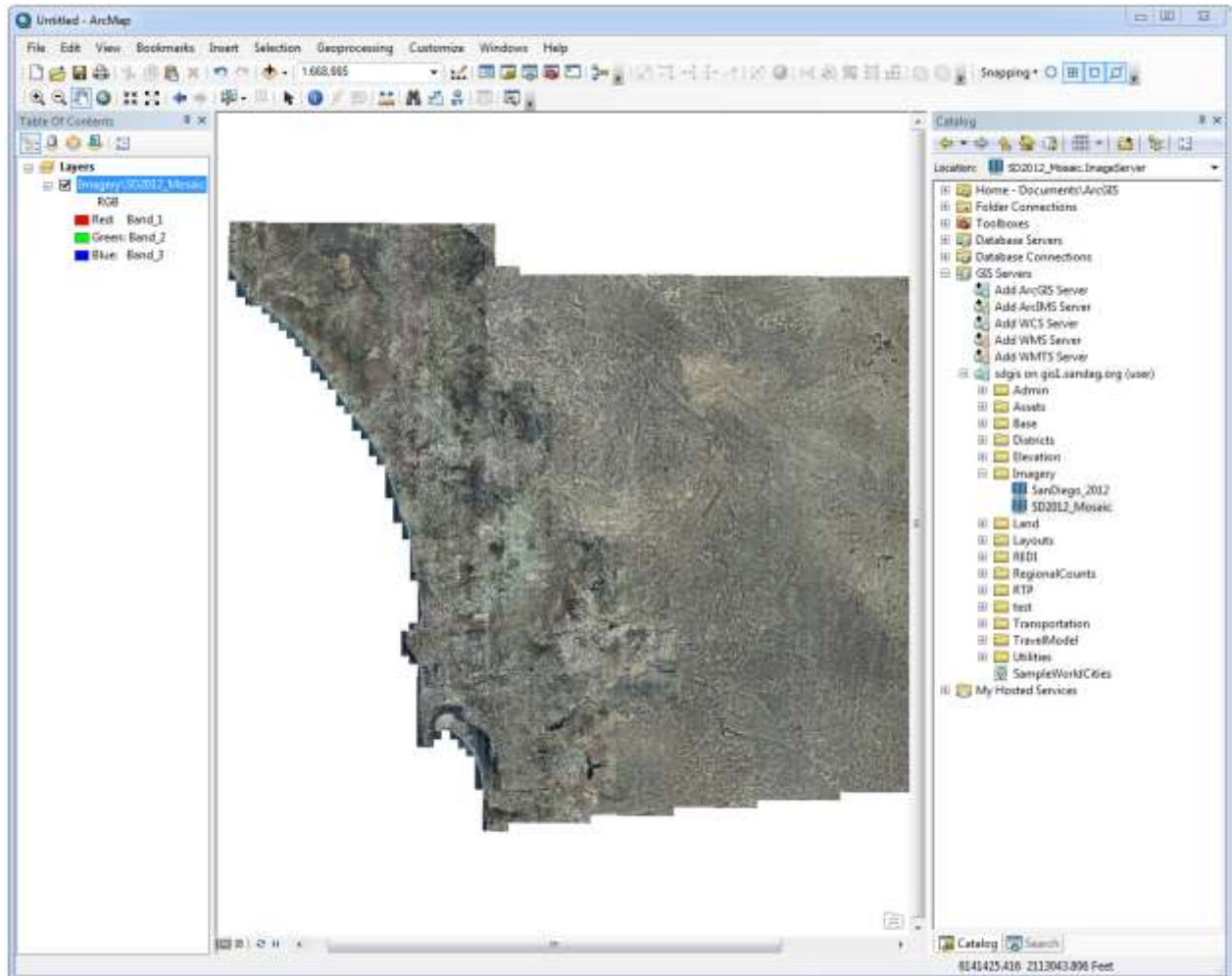


Now you can open ArcMap and use these services as shown below:



Open ArcCatalog in the ArcMap window:

ArcCatalog can be accessed in ArcMap either from the tab on the right-hand side or in the "Windows" dropdown



Drag and drop services from the folders in ArcCatalog into ArcMap.

Questions or technical issues regarding the ArcGIS Server can be directed to SANDAG Technical Services GIS support at: gismaster@sandag.org

