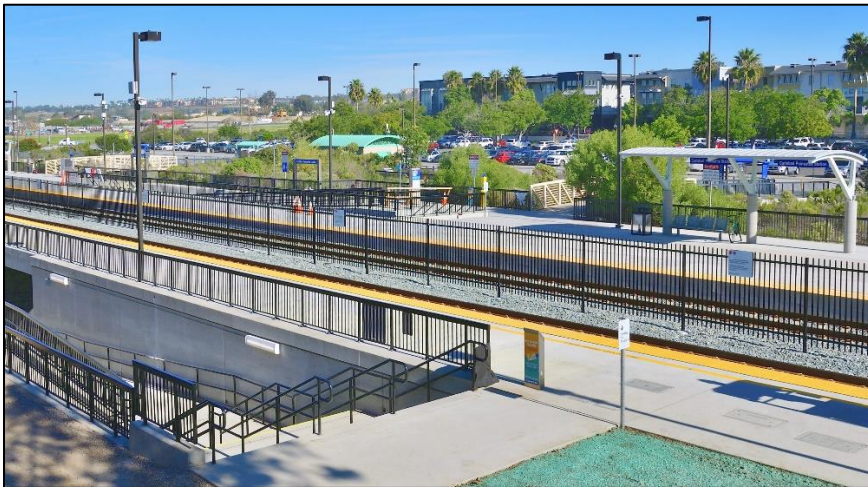


## PROJECT OVERVIEW

The Poinsettia Station Improvements project renovated Poinsettia Station in the City of Carlsbad to improve traveler wait times, reduce train delays, provide easier access, enhance pedestrian safety, and upgrade station amenities. The project is a key part of the larger effort to improve and modernize rail infrastructure along the Los Angeles-San Diego-San Luis Obispo (LOSSAN) rail corridor as part of the North Coast Corridor (NCC) Program.



A photo looking northeast of Poinsettia Station in the City of Carlsbad.

## UPGRADED STATION AMENITIES AND IMPROVED PASSENGER WAIT TIMES

The Poinsettia Station Improvements project:

- Replaced two at-grade rail crossings with a pedestrian, ADA, and bicycle-friendly undercrossing.
- Lengthened the new platforms to 1,000 feet and elevated the platforms 15 inches to accommodate longer trains and facilitate level boarding and easier access.
- Installed fencing between the tracks to allow passengers to board different trains at the same time and allow passing trains to move through the station while other trains are boarding.
- Features enhanced station amenities, such as newly installed platform canopies for shade or rain cover and updated station signage and lighting.

These station improvements are part of a larger inter-agency regional initiative to provide nearly \$1 billion in infrastructure improvements and safety and operational enhancements to the San Diego segment of the LOSSAN rail corridor.

## PROJECT SCHEDULE AND FUNDING:

### Construction Start Date:

March 2018

### Status:

Complete

### Completion Date:

February 2020

### Funding Sources:

Federal, State, *TransNet*

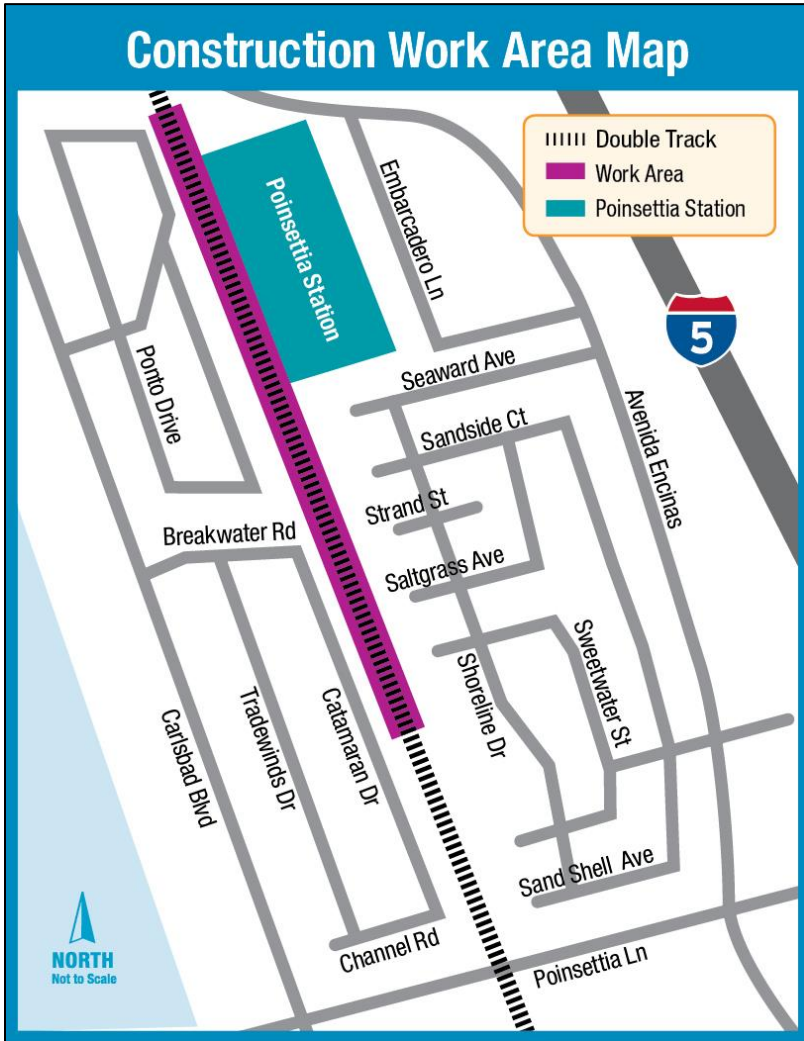
### Total Project Cost:

\$33.7 million

## PROVIDE EASIER ACCESS AND ENHANCE PEDESTRIAN SAFETY

The new ADA-compliant pedestrian undercrossing features stairways and ramps on both sides of the tracks to facilitate crossings for bicyclists and pedestrians. Fencing was installed between the tracks within the station to enhance pedestrian safety.

# Poinsettia Station Improvements Project



A photo of a new overhead canopy at Poinsettia Station.



A photo of the new pedestrian undercrossing at Poinsettia Station.

## ABOUT THE LOSSAN PROGRAM

SANDAG is working in collaboration with NCTD to improve the San Diego segment of the LOSSAN coastal rail corridor, including a primary effort to double track the majority of the LOSSAN corridor from Orange County to Downtown San Diego. Double tracking allows trains traveling in opposite directions to pass without slowing down or stopping, increasing the overall efficiency and reliability of the corridor. Other infrastructure improvements along the LOSSAN corridor include bridge and track replacements, new platforms, pedestrian crossings, and other safety and operational enhancements.

## FOR MORE INFORMATION OR TO SIGN UP FOR PROJECT UPDATES:

Visit: [KeepSanDiegoMoving.com/PSI](http://KeepSanDiegoMoving.com/PSI) | Call: (858) 549-RAIL | TTY: (619) 699-1904 | Email: [LOSSANRail@KeepSanDiegoMoving.com](mailto:LOSSANRail@KeepSanDiegoMoving.com)



SANDAG | GoNCTD



SANDAGregion | GoNCTD



SANDAGregion | NCTD



U.S. Department of Transportation  
Federal Transit Administration