

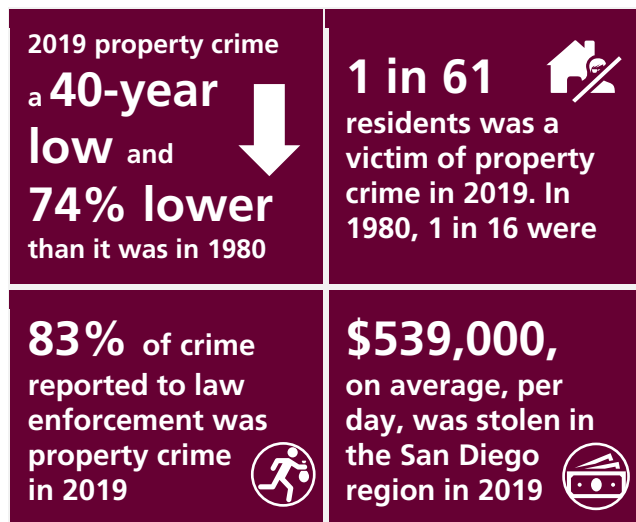


Forty Years of Crime in the San Diego Region

Since 1980, the Criminal Justice Clearinghouse of SANDAG has worked with local law enforcement agencies to compile and report regional crime statistics on an annual basis.¹ With the recent release of the annual Crime Bulletin with statistics through calendar year 2019, this CJ Flash highlights noteworthy data and trends for the San Diego region, including an analysis of how crime numbers look now, compared to 40 years ago.

Highlight 1

The property crime rate reached a new 40-year low in 2019, with 16.48 crimes reported per 1,000 population, a 74% decrease from the 1980 rate of 62.63. While this decrease is striking, it is important to remember that only 34% of property crime is reported to law enforcement according to victimization surveys² and identity theft is not included in these statistics.

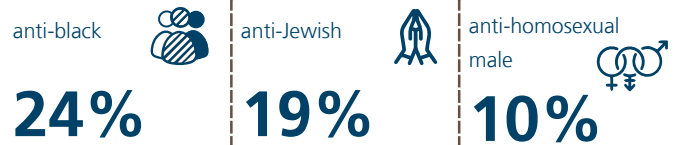


Highlight 2

The number of hate crime events reported in the San Diego region increased 24% from 2018 to 2019, from 78 to 97. In addition, the number of victims increased 48%, from 94 to 139.

hate crime events up 24% from 2018 to 2019

3 most common hate crime motives in 2019:



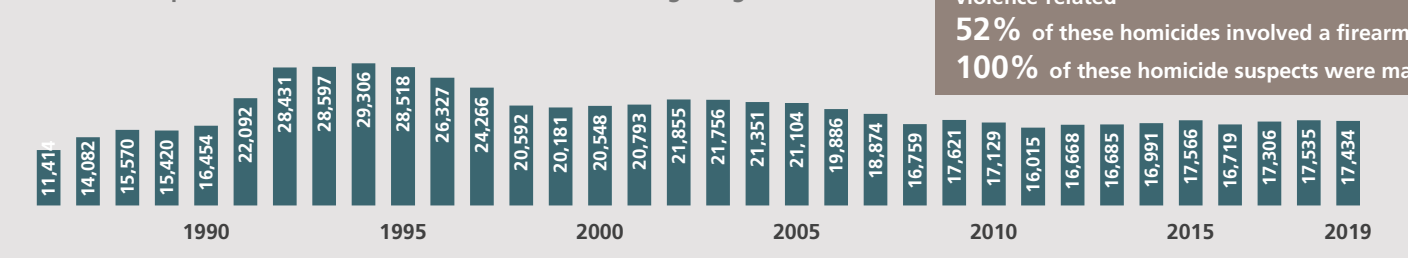
3 most common hate crime actions in 2019:

- damage property (**36%**)
- intimidation (**22%**)
- aggravated assault (**21%**)

Highlight 3

There was an average of 48 domestic violence incidents reported to police per day in 2019 (total of 17,434), a decrease of 1% from 2018. According to victimization surveys, just under half (47%) of domestic violence incidents are reported to law enforcement. The first year (1986) that domestic violence reporting was mandated in California, there was a total of 11,414 reported and the greatest number of incidents were reported in 1994 when there were 29,306. It is important to note that a jump in domestic violence numbers could reflect increased awareness and encouragement to report. In 2019, about 1 in 3 homicides (32%) where the motive could be determined were domestic violence-related. Just over half (52%) of these 21 homicides involved a firearm, 100% occurred at a residence, the average age of both the victim and suspect was 38.6, and while 33% of the victims were males (2 fathers, 1 husband, and 4 sons), 100% of the suspects were male.

Number of Reported Domestic Violence Incidents, San Diego Region, 1986–2019



1 in 3 homicides in 2019 were domestic violence-related
52% of these homicides involved a firearm
100% of these homicide suspects were male

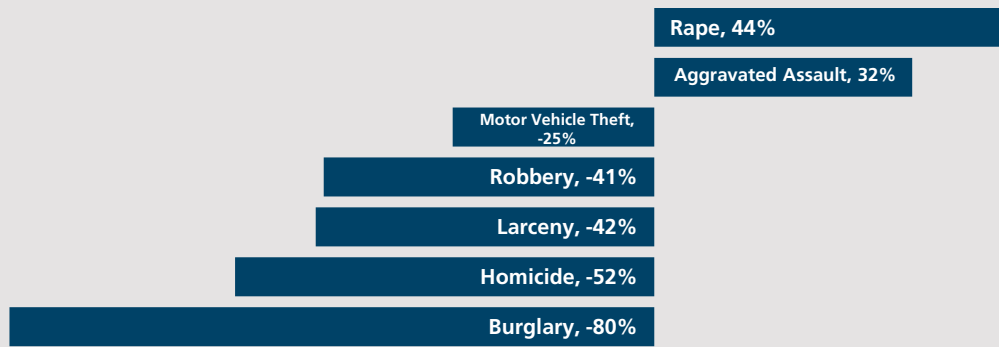
¹ SANDAG reports Part I crime statistics reported through the FBI's Uniform Crime Reporting (UCR) system on a bi-annual basis. The seven crimes that are documented include four violent (homicide, rape, robbery, and aggravated assault) and three property (burglary, motor vehicle theft, and larceny) crime types.
² Morgan, R. E. & Oudekerk, B.A. (2019). *Criminal Victimization, 2018* (NCJ 253043). Washington, D.C.: Bureau of Justice Statistics.



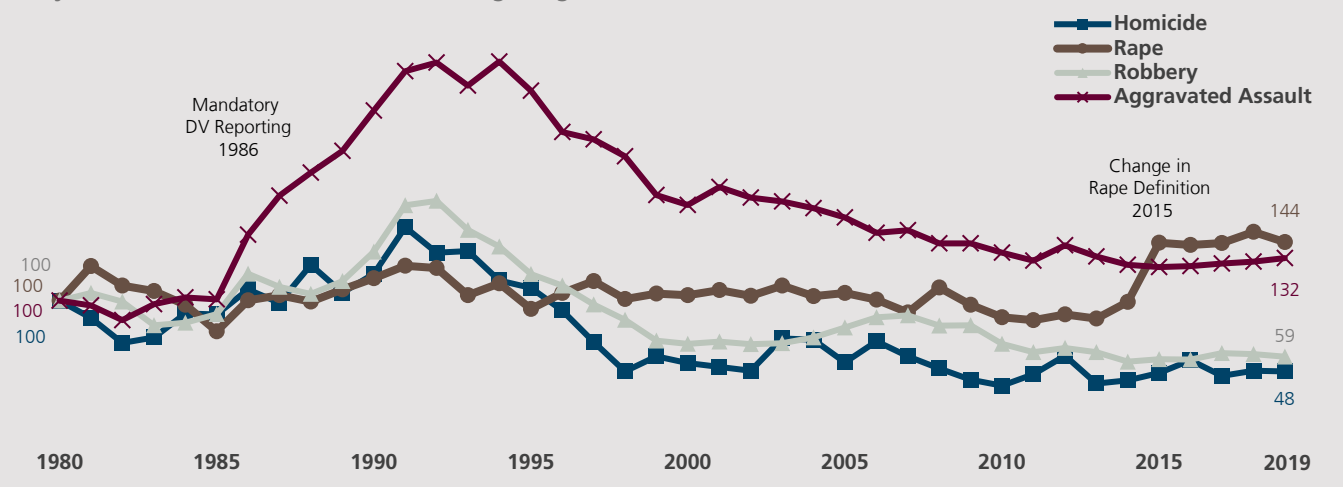
Highlight 4

Over the past 40 years, the population of the San Diego region has grown 80%, but the number of reported crimes have dropped considerably. Have these crimes dropped in number at the same time and to the same degree? Because some crimes (e.g., aggravated assault) occur much more frequently than others (e.g., homicide), we calibrated the number of violent and property crimes for the past four decades so that for all crimes, the baseline year of 1980 was equal to “100” offenses so that we could equitably track change on the same scale. As the following figures show, burglaries decreased to the greatest degree (-80%), and aggravated assaults (32%) and rapes (44%) were the only two that increased, due at least in part to mandated domestic violence reporting as previously described in Highlight 3, and the change in the rape definition in 2015 to include male victims and a greater number of violent actions.

Percent Change in Number of Reported Crimes in the San Diego Region, 1980–2019



Forty Years of Violent Crime in the San Diego Region, Baseline Year (1980) = 100



Forty Years of Property Crime in the San Diego Region, Baseline Year (1980) = 100

