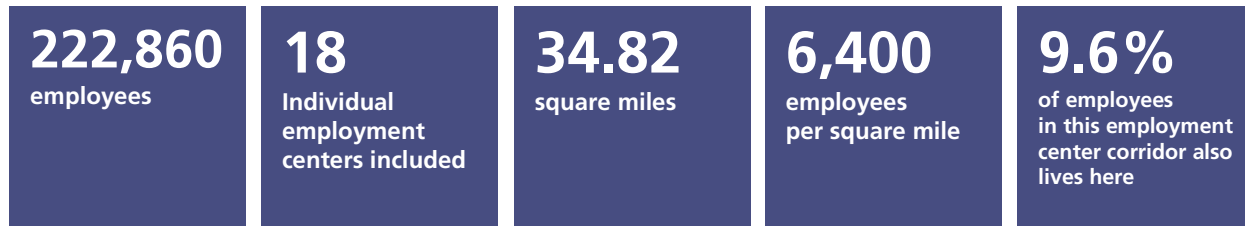


# 78 Corridor employment center

## Employment centers in the San Diego region<sup>1</sup>: An analysis of where people live and work

Highlight 1

Characteristics of this employment center corridor



Sources: SANDAG Employment Estimates, 2016; LEHD LODES OD, 7.3, 2015

Highlight 2

Industries in this employment center and the region overall

	78 Corridor employment center		Region	
	Number of jobs	Percentage/ rank	Number of jobs	Percentage/ rank
<b>Health care and social assistance</b>	<b>23,490</b>	<b>11% (3)</b>	199,700	13% (1)
<b>Retail trade</b>	<b>31,052</b>	<b>14% (1)</b>	156,612	10% (2)
Professional, scientific, technical	15,845	7% (6)	148,766	10% (3)
<b>Food services</b>	<b>19,328</b>	<b>9% (4)</b>	131,594	9% (4)
<b>Manufacturing</b>	<b>29,265</b>	<b>13% (2)</b>	109,234	7% (5)
Administrative, support, waste services	12,762	6% (7)	91,519	6% (6)
<b>Construction</b>	<b>18,918</b>	<b>9% (5)</b>	83,498	5% (7)
Local government education	8,848	4% (10)	80,300	5% (8)
Other services	10,736	5% (9)	69,124	5% (9)
Finance and insurance	5,401	2% (11)	47,848	3% (10)
Wholesale trade	12,226	6% (8)	46,625	3% (11)
Arts, entertainment, recreation	5,199	2% (12)	45,639	3% (12)
Real estate, rental, leasing	4,918	2% (13)	38,582	3% (13)
Local government	4,086	2% (15)	37,429	2% (14)
Transportation and warehousing	4,866	2% (14)	36,183	2% (15)
Accommodation	2,788	1% (18)	33,094	2% (16)
Educational services	3,391	2% (16)	32,892	2% (17)
State government education	2,681	1% (19)	31,600	2% (18)
Information	3,038	1% (17)	26,262	2% (19)
Department of Defense	0	0% (26)	22,500	1% (20)
Management of companies/enterprises	2,136	1% (20)	21,500	1% (21)
Federal government	415	<1% (22)	11,454	1% (22)
Farm	350	<1% (23)	9,000	1% (23)
Utilities	803	<1% (21)	7,208	<1% (24)
State government	315	<1% (24)	7,037	<1% (25)
Mining and logging	3	<1% (25)	300	<1% (26)
<b>Total</b>	<b>222,860</b>		<b>1,525,500</b>	

Source: SANDAG Employment Estimates, 2016

<sup>1</sup> This data summary was prepared by SANDAG and is part of an evolving analysis of where people live and work in the San Diego region. For data notes, sources, and qualifications, please visit: [sandag.org/employmentcenters](http://sandag.org/employmentcenters). Suggested reference: SANDAG (2019, May). 78 Corridor employment center. San Diego, CA: Author.

### Highlight 3

#### Other statistics about the education level and income of employees in this employment center

**22%**

have Bachelor's degree or higher (24% region)

**\$51,771**

mean employee salary (\$55,801 region)

these jobs represent

**14.6%**

of the region's jobs

these incomes represent

**11.1%**

of regional labor income

Sources: SANDAG Employment Estimates, 2016; LEHD LODES OD, 7.3, 2015

### Highlight 4

#### What mode of transportation these employment center employees use to get to work during peak period?



	Drive alone	Transit	Carpool	Bike	Walk
<b>78 Corridor employment center</b>	<b>80%</b>	<b>3%</b>	<b>14%</b>	<b>2%</b>	<b>1%</b>
<b>Region</b>	80%	4%	13%	2%	1%

Source: SANDAG Activity Based Model, 2016

### Highlight 5

#### How far employees drive on average to get to this employment center during peak period and how long it takes them on average, by transportation mode

	78 Corridor employment center		Region	
	Mean number of miles	Mean length of time (Minutes)	Mean number of miles	Mean length of time (Minutes)
Vehicles	10.2	21.2	12.0	25.1
Transit	9.8	68.3	10.7	62.8
Bike	4.2	21.1	4.3	21.6
Walk	1.4	27.9	1.2	23.2

Note: Peak period includes 6:00 a.m. to 8:59 a.m. and 3:30 p.m. to 6:59 p.m.

Source: SANDAG Activity Based Model, 2016

### Highlight 6

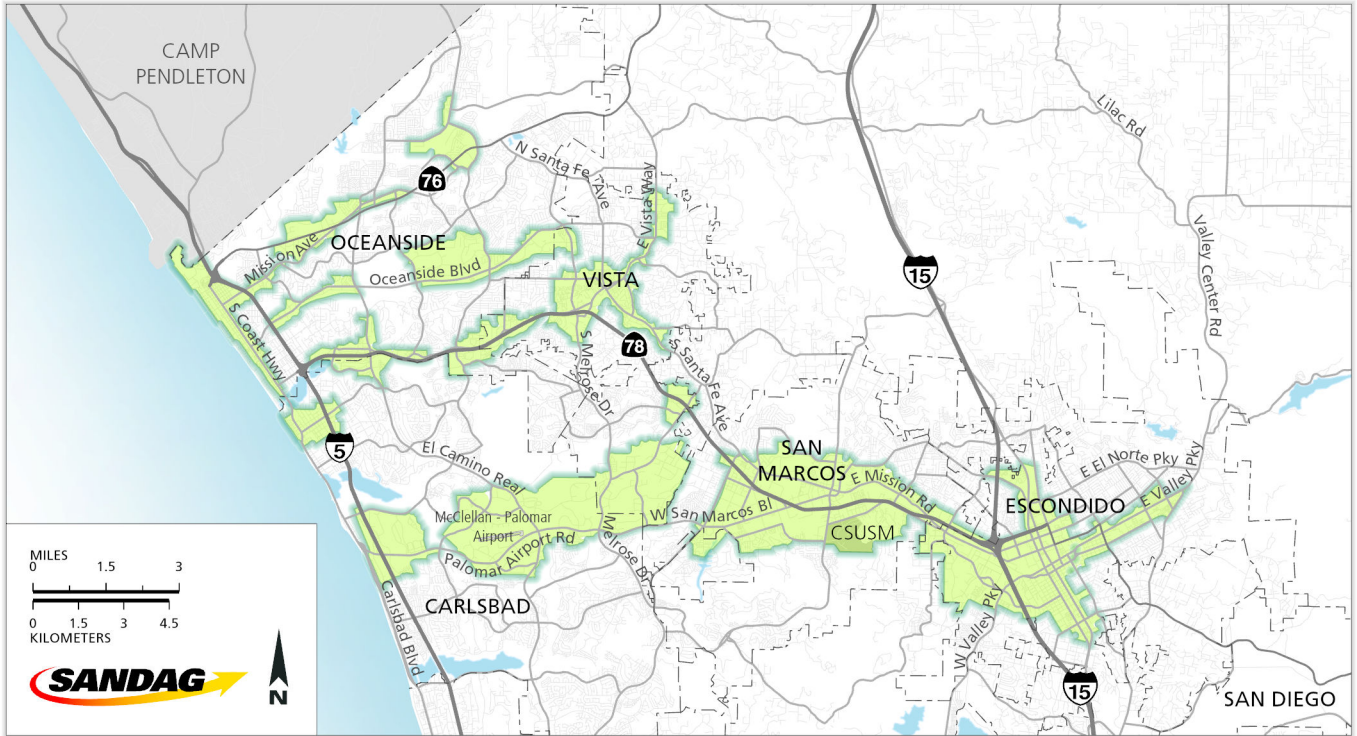
#### What jurisdictions these employment center employees travel from

Jurisdiction	Number of workers in the employment center	Percent
Oceanside	22,710	19%
Escondido	16,949	14%
San Diego	16,648	14%
Unincorporated	16,565	14%
Vista	13,791	11%
Carlsbad	11,734	10%
San Marcos	11,121	9%
Encinitas	3,956	3%
Chula Vista	1,926	2%
Poway	1,465	1%
El Cajon	982	1%
La Mesa	644	1%
Santee	568	1%
Solana Beach	505	<1%
National City	476	<1%
Imperial Beach	302	<1%
Lemon Grove	222	<1%
Coronado	206	<1%
Del Mar	85	<1%
<b>Total</b>	<b>120,855</b>	

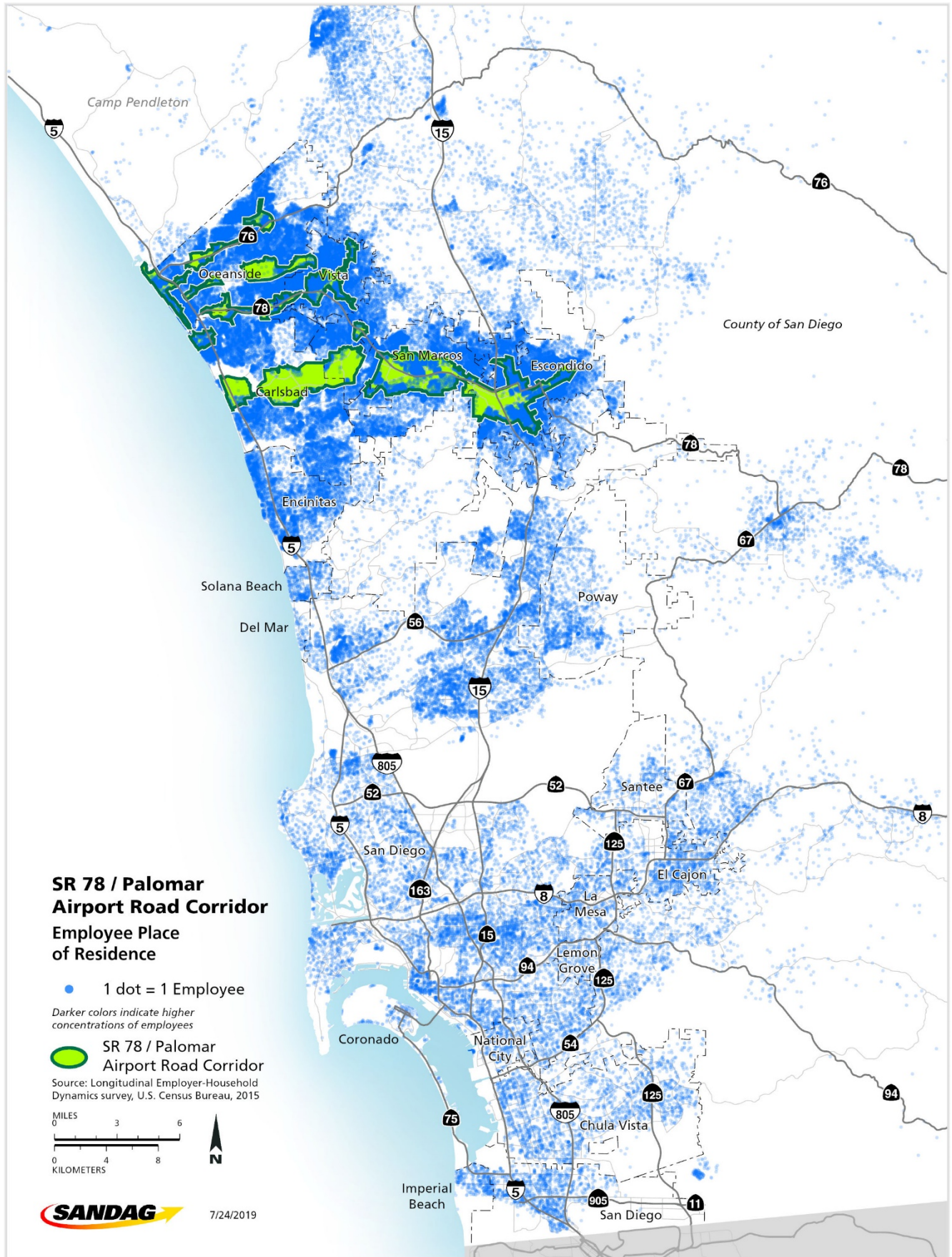
Note: The total number of employees shown here is lower than presented elsewhere because employees who travel from outside the region or have an unknown origin location are excluded and only primary jobs are included.

Source: SANDAG Employment Estimates, 2016; LEHD LODES OD, 7.3, 2015

78 Corridor employment center



Where do 78 Corridor employment center employees live?



### How far employees in the 78 Corridor employment center have to travel

