



SANDAG

42 Years of Crime in the San Diego Region: 1980 Through 2021

April 2022

Research findings from the Criminal Justice Clearinghouse

CRIMINAL JUSTICE BULLETIN

Introduction

Since 1980, SANDAG has been reporting crime statistics for the San Diego region through a cooperative agreement with local law enforcement agencies. This report presents and discusses crime trend data for the past 42 years.¹ Crime rates per 1,000 resident population,² as well as the actual number of crimes reported, are presented.

SANDAG is the only local entity to compile and analyze these statistics historically across the 18 incorporated cities, as well as the unincorporated areas of the county, making this information some of the most frequently requested from the SANDAG Criminal Justice Clearinghouse. These data are useful to local law enforcement, policy makers, and the community in general for tracking public safety trends over time, as well as the effectiveness of prevention and response efforts on regional crime rates.

Highlights

- The 2021 violent crime rate (3.74 per 1,000 population) for the San Diego region was 8% higher than in 2020.
- There were 118 homicides in the San Diego region in 2021, three more than in 2020.
- The number of rapes reported to law enforcement was up 11% in 2021.
- Robbery was the only violent crime to decrease in 2021 (-4%), down to a new 42-year low.
- Aggravated assaults increased for the sixth consecutive year, up 12% from 2020.
- The 2021 property crime rate of 16.14 per 1,000 population represented a 9% increase from 2020, but was still the second lowest rate in the past 42 years.
- Burglary was the only property crime to decrease from 2020 to 2021 (-2%), dropping to a new 42-year low. Both residential and non-residential burglaries were down.
- Larceny was up 9% from 2020 to 2021, but theft of motor vehicle parts, including catalytic converters, was up 71%.
- Motor vehicle theft was up 20% from 2020 to 2021. The value of stolen vehicles was \$122.97 million, which represented half of all stolen property.
- The number of reported domestic violence incidents was up 3%.

¹ It should be noted that the City of Coronado only reported crime statistics for this report for the first seven months of the year and California Parks for only two months because they have already transitioned to the new reporting system described on page 2. As such, crime rate and other comparisons to previous years in the appendix tables for these agencies are not presented. Due to the small number of crimes these agencies represented in previous year totals, these missing data do not have a significant effect on regional totals and rates presented here.

² Please note that 2020 population estimates were used because 2021 estimates were not available at the time of this publication. The populations used to calculate rates are provided in Appendix Table 20.

Overall crime

There were 66,452 Part I crimes in the San Diego region in 2021 (Appendix Tables 1 and 5), which equates to 19.88 crimes per 1,000 population (Appendix Table 2). Part I crimes include four violent offenses (homicide, rape, robbery, and aggravated assault) and three property offenses (burglary, larceny, and motor vehicle theft) that are tracked nationwide in a standardized manner by the FBI, with agencies submitting crime data through the UCR system. Other crimes, such as drug-related offenses, vandalism, and fraud, also are documented by local law enforcement as Part II crimes. However, because categorization schemes can vary across agencies, standardized numbers for Part II crimes are not available, even though these crimes may be sizeable in number and require substantial attention and resources from law enforcement.³

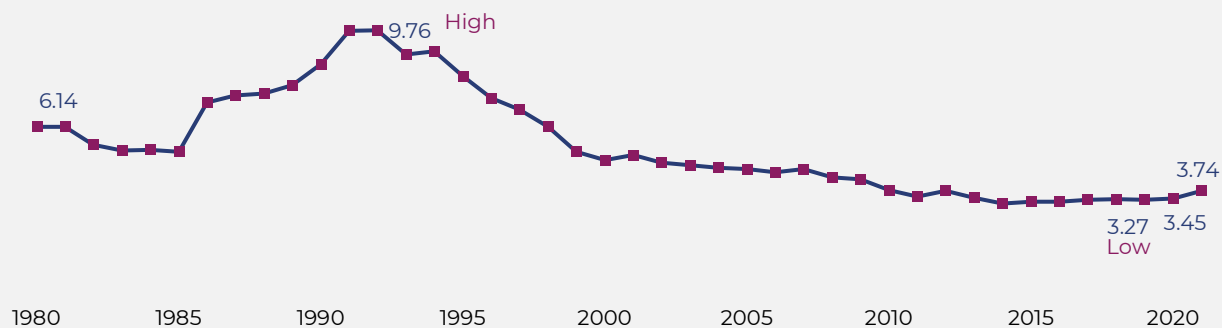
Violent crime

In 2021, there were 12,495 Part I violent crimes reported to law enforcement in the San Diego region, an increase of 8% from 2020 (Appendix Tables 1 and 6).⁴ The violent crime rate per 1,000 of 3.74 was also an increase of 8% from the 3.45 reported for 2020 (Figure 1). The most common type of violent crime in 2021 was aggravated assault, which represented over two-thirds (71%) of all violent crime; robbery represented 19%, rape 9%, and homicide 1%. According to statistics from the National Crime Victimization Survey,⁵ 40% of violent crime was reported to law enforcement nationwide in 2020 (the most recent year available), including 23% of rapes, 54% of robberies, and 57% of aggravated assaults (not shown).

As Figure 1 shows, the violent crime rate (per 1,000 population) in the San Diego region increased in the later part of the 1980s, reaching a peak of 9.76 in 1992. Since then, it generally declined to a 42-year low in 2014 (3.27) and then stabilized somewhat, increasing to 3.74 in 2021. Across jurisdictions, the 2021 violent crime rate ranged from 0.36 to 7.39 (Appendix Table 3).

Figure 1

Region's violent crime rate increased from 2020 to 2021



Sources: SANDAG; California Department of Finance; U.S. Census 1990; U.S. Census 2000; U.S. Census 2010

Over the past year, 16 jurisdictions had higher violent crime rates and 5 had lower ones, compared to 2020 (4 had numbers too small for valid comparisons or did not collect data for the entire year). The size of the one-year increases ranged from 1% in Encinitas to 51% in Poway.

³ It should be noted San Diego County law enforcement agencies are in the process of transitioning to the California's Incident Based Reporting System (CIBRS), which allows for more timely and comprehensive data analysis by including information regarding a greater number of incident types, as well as incident characteristics. SANDAG reports also will be updated as new standardized regional information is available with full transition completion expected later in 2022.

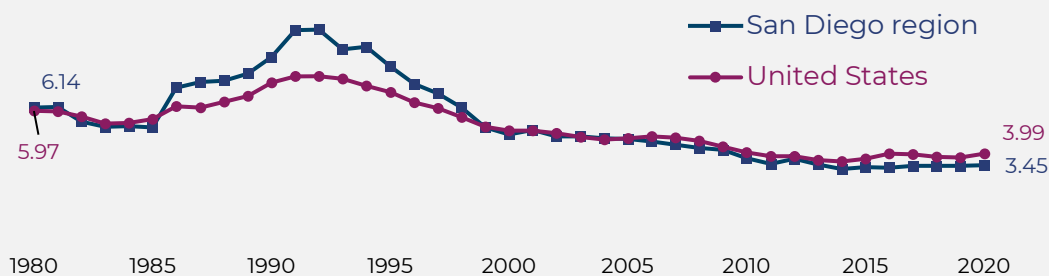
⁴ The number of violent crimes reported in each jurisdiction for 2017 through 2021 also is presented in Appendix Tables 10 through 14.

⁵ Morgan, R. E. & Thompson, A.. (2021). *Criminal Victimization, 2020* (NCJ 301775). Washington, D.C.: Bureau of Justice Statistics.

Annual statistics through 2020 from the FBI (the most recent annual crime rate data available) were used to compare changes over time in the violent crime rate reported in the San Diego region to those reported across the United States. As Figure 2 shows, the San Diego region experienced a greater rise in violent crime in the late 1980s and early 1990s compared to the nation, returning to a similar violent crime rate after 1998. This increase was possibly related to the prevalence of methamphetamine distribution and use in the region during this time period. In 2020, the violent crime rate in the San Diego region was 3.45, versus 3.99 for the nation as a whole.

Figure 2

San Diego region had a greater increase in violent crime than the nation in late 1980s but was lower in 2020



Sources: SANDAG; FBI

Additional analyses of data for the first three quarters of 2021 of a sample of cities with populations of 500,000 or more revealed that six had fewer violent crimes reported in 2021, compared to 2020, and seven had more (Table 1).

Table 1

Six large U.S. cities had fewer violent crimes in 2021 compared to 2020 and seven had more

	Jan-Sept 2020	Jan-Sept 2021	Percent change
Honolulu, HI	1,843	893	-52%
Las Vegas, NV	6,984	5,718	-18%
Boston, MA	3,381	2,882	-15%
Oklahoma, OK	3,673	3,309	-10%
Dallas, TX	8,921	8,288	-7%
Detroit, MI	10,615	10,455	-2%
Milwaukee, WI	6,915	7,016	1%
Memphis, TN	11,369	11,894	5%
Columbus, OH	3,932	4,166	6%
Denver, CO	4,706	5,106	8%
Albuquerque, NM	5,645	6,238	11%
Seattle, WA	3,646	4,193	15%
Portland, OR	2,669	3,436	29%

Source: FBI

Homicide

Over the past 42 years, the number of homicides in the San Diego region peaked at 278 in 1991. This high was followed by a steady drop followed by some fluctuations that included a low of 67 in 2010. In 2021, there were a total of 118 homicides, which was 3 more than the 115 in 2020 (Appendix Table 1 and Figure 3).

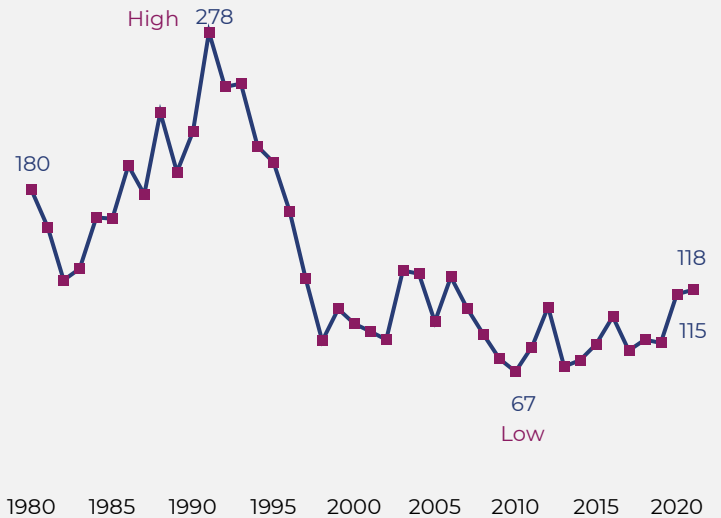
In 2021 motive could be determined for 84 of the 118 homicides by the time of this report. The most common motive was argument (32%), followed by gang-related (18%). Other motives rounded out the rest and included domestic violence, robbery/burglary, a lovers' triangle, child abuse, institutional murders, and other motives not described (not shown).

Rape

There were 1,072 rapes reported in the San Diego region in 2021, using the revised FBI definition of rape which includes male victims and a greater number of eligible actions (Appendix Tables 1 and 8). As Figure 4 shows, between 1980 and 2014 (when the legacy definition was in place) the number of reported rapes remained relatively stable, compared to the number of other types of violent crime during the same period of time. The number jumped to 1,100 in 2015 and reached a high of 1,162 in 2018. The 2021 number of reported rapes represented an 11% increase from 2020. In 2021, 93% of reported rapes were categorized as “completed,” rather than “attempted” (not shown).

Figure 3

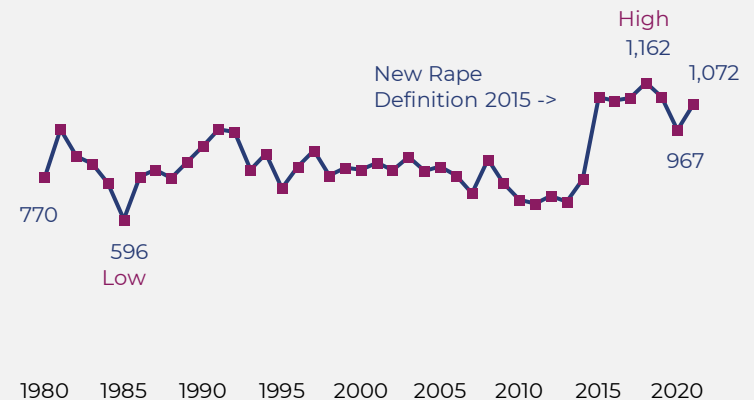
Number of homicides up in 2021



Source: SANDAG

Figure 4

Number of rapes up in 2021



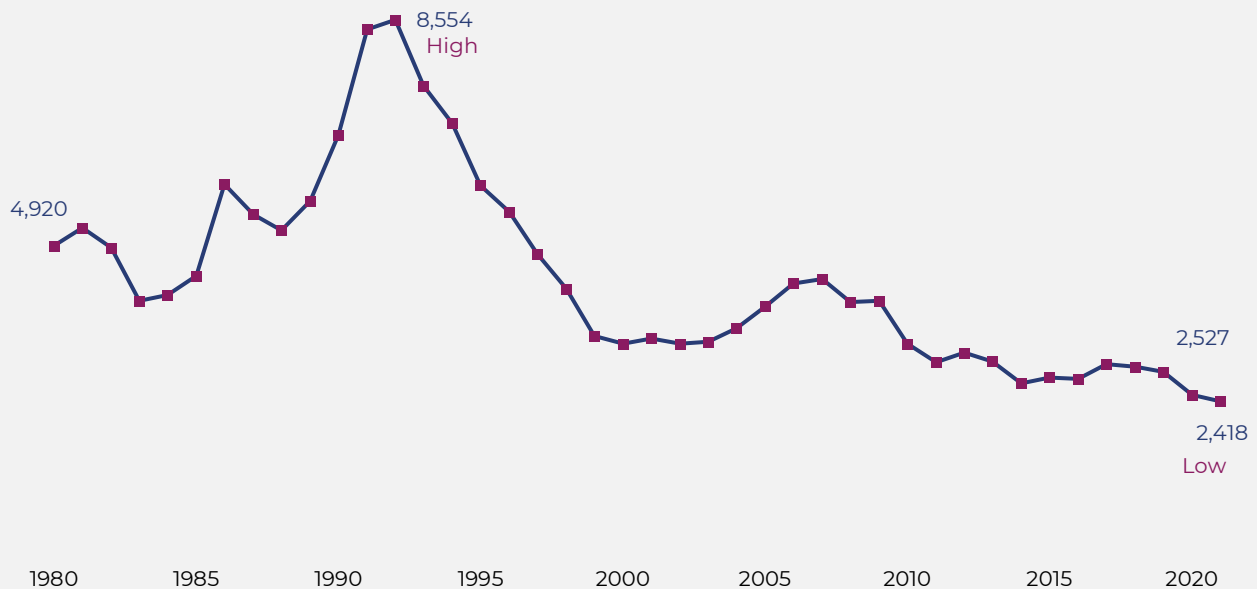
Source: SANDAG

Robbery

Over the past 42 years, the number of robberies began an upward trend in 1984, which peaked at 8,554 in 1992. Since then, there has been a general decline, with some leveling off and fluctuations. There were 2,418 robberies reported in the region in 2021, a decrease of 4% from 2020 and a new 42-year low (Figure 5 and Appendix Tables 1 and 8).

Figure 5

Number of robberies down to 42-year low



Source: SANDAG

As part of standardized UCR reporting requirements, the type of weapon used during a robbery and the location of the robbery are documented. In 2021, 18% of robberies involved a firearm, 16% another weapon (e.g., bat, stick, or other blunt object), 12% a knife or other cutting instrument, and the majority (55%) were considered strong-arm (committed with a threat of force or intimidation that usually does not involve a weapon). Each of these types of robberies decreased in number from 2020 to 2021, ranging from 2% fewer strong-arm robberies to 10% fewer robberies with another type of weapon; robberies with a firearm were down 4% (not shown).

In 2021, 44% of robberies occurred in commercial establishments; 41% occurred out in the open, on streets, or in other public places; 7% in residences; 6% in other locations (which include wooded areas, churches, schools, and other public buildings); and 1% in banks. There were fewer robberies in residences (-9%), out in the open (-12%), and in other locations (-20%), but 9% more in businesses and 10% more in banks (not shown).

For the 12 jurisdictions with robbery numbers large enough for comparison in 2020 and 2021, six had increases, ranging from 7% in El Cajon to 30% in Escondido and six had decreases, ranging from -10% in National City and San Diego to -44% in Spring Valley (Appendix Tables 13 and 14).

Aggravated assault

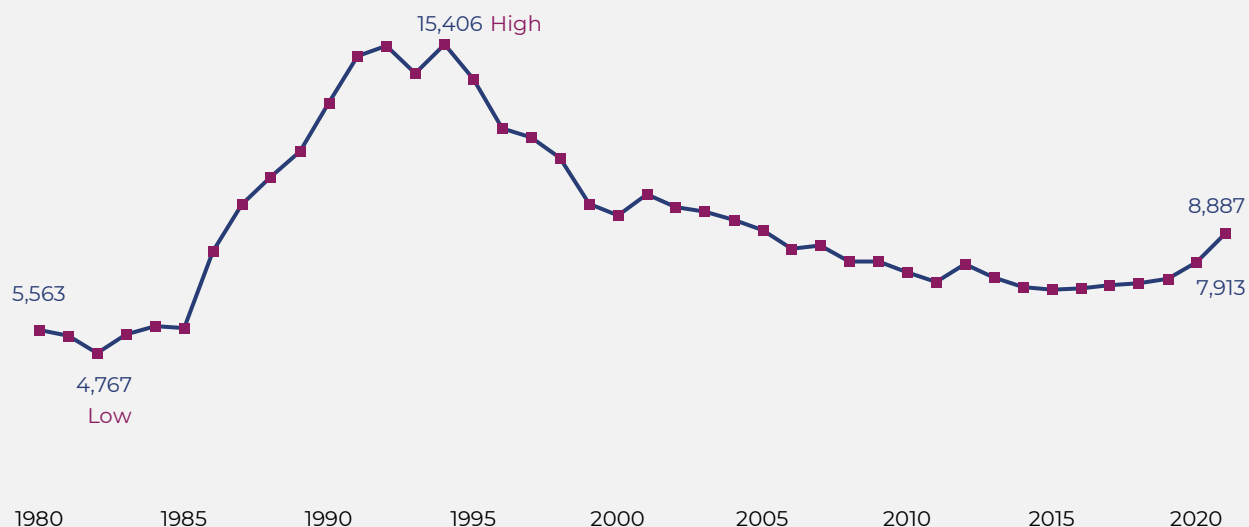
Over the past 42 years, the number of aggravated assaults followed an upward trend from 1985 that peaked in 1994 (15,406). This overall increase was due at least in part to 1986 legislation requiring law enforcement agencies to report all domestic violence incidents. Since 1994, these numbers have generally declined, including in 2015 with the change in the rape definition. However, this was the sixth consecutive increase in 2021 to 8,887, the largest number since 2005 (Figure 6 and Appendix Tables 1 and 8).⁶

Like robbery, the type of weapon used in aggravated assaults is documented for reporting purposes. In 2021, 36% of aggravated assaults involved the use of another weapon (e.g., bat, stick, or other blunt object); 28% hands, feet, or fists; 19% a knife or other cutting instrument; and 17% a firearm. Compared to 2020, there were increases in each weapon type, including 8% for those involving a cutting instrument; 10% hands, feet, or fists; 14% other weapons; and 18% firearms (not shown).

For the 21 jurisdictions with numbers large enough to compare, 5 experienced a one-year decrease in the number of reported aggravated assaults (ranging from -4% in Valley Center to -28% in Alpine) and 15 experienced an increase (ranging from 1% in Escondido to 61% in Lemon Grove); one had no change (San Marcos) (Appendix Tables 13 and 14).

Figure 6

Number of aggravated assaults up again in 2021



Source: SANDAG

⁶ In 2021, there were around three simple assaults for every reported aggravated assault (for a total of 21,590 simple assaults). Simple assault, which is not counted as a Part I crime, includes all assaults and attempted assaults which are not of an aggravated nature and do not result in serious injury to the victim. The number of simple assaults reported in 2021 represented a 2% increase from 2020.

Violent crime against seniors

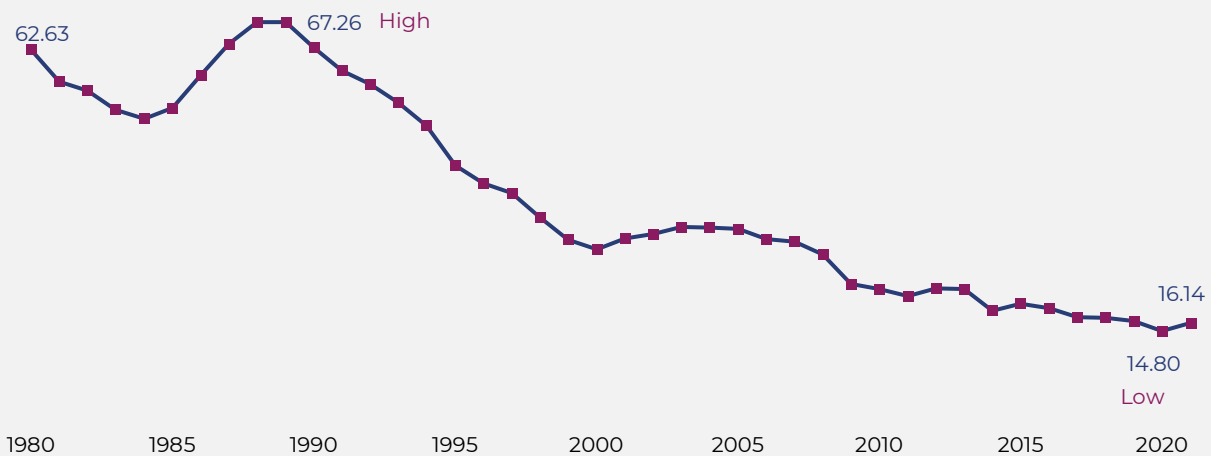
Each jurisdiction voluntarily documents violent crimes committed against seniors (individuals 60 years of age and older). In 2021, there were 1,131 violent crimes against seniors, an increase of 10% from the previous year. These crimes included 10 homicides, 30 rapes, 235 robberies, and 856 aggravated assaults. Of the ten reporting agencies, only seven had numbers large enough to compare over time, with five reporting one-year increases (ranging from 7% for Chula Vista to 32% for El Cajon) and only the Sheriff (-4%) and Escondido (-26%) reporting decreases (not shown).

Property crime

With 53,957 property crimes reported in 2021 (Appendix Tables 1 and 7), 1 in every 62 residents was the victim of a property crime (not shown).⁷ The 2021 property crime rate of 16.14 was 9% higher than in 2020 but was still the second lowest in the past 42 years (Figure 7 and Appendix Table 4). Most crime (81%) reported to law enforcement represents property offenses and of these property crimes, 66% were larcenies in 2021, 21% motor vehicle thefts, and 13% burglaries (not shown). Across the region, 2021 property crime rates ranged from 4.46 in Ramona to 20.64 in National City per 1,000 residents (Appendix Table 4).⁸ Sixteen jurisdictions had a higher property crime rate in 2021 compared to 2020 (ranging from 2% in Vista to 51% in Valley Center) and 8 had a lower rate (ranging from -1% in El Cajon to -22% in Spring Valley); as previously noted, Coronado did not compile UCR data for the entire calendar year and is not included. When interpreting these statistics, it is important to note that a variety of factors can affect a jurisdiction's crime rate, such as daytime population and accessibility.

Figure 7

Property crime rate increased in 2021 but was still second lowest



Sources: SANDAG; California Department of Finance; U.S. Census 1990; U.S. Census 2000; U.S. Census 2010

⁷ According to statistics from the 2019 National Crime Victimization Survey, 33% of property crime nationwide was reported to law enforcement, including 44% of burglaries, 75% of motor vehicle thefts, and 29% of other thefts.

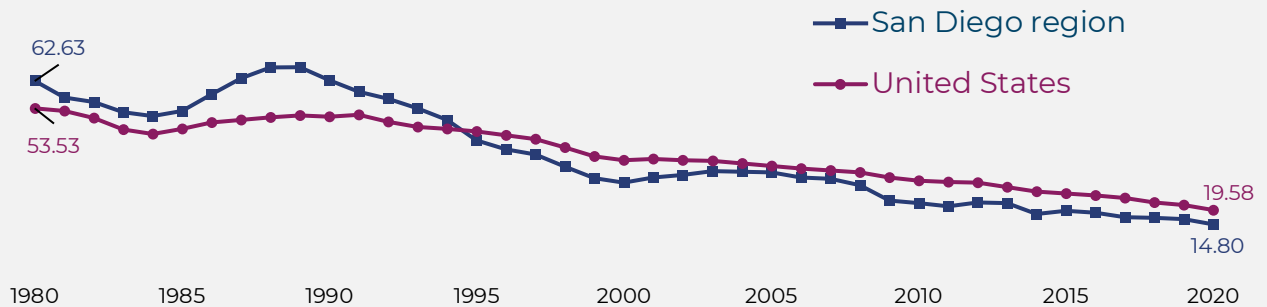
⁸ The numbers of property crimes reported in each jurisdiction for 2017 through 2021 also are presented in Appendix Tables 10 through 14.

In terms of dollar value, almost \$244 million worth of property was stolen in the San Diego region in 2021, which equates to around \$668,000 on average per day. This amount reflected a 22% increase from the almost \$200 million stolen in 2020 (Appendix Table 17). Thirty-four percent (34%) of this property, which was valued at over \$83 million, was recovered in 2021, compared to 37% and almost \$74 million recovered in 2020 (Appendix Tables 18 and 19).

Figure 8 compares property crimes reported to law enforcement in the San Diego region to national statistics from 1980 through 2020 (the most recent annual rate available, as previously noted). In 1980, the San Diego region had a higher property crime rate compared to the U.S. overall. The local property crime rate began to decline in the early 1990s, falling and remaining below the national average since 1995. In 2020, the property crime rate for the region was 14.80, compared to 19.58 for the nation.

Figure 8

San Diego region has had a lower property crime rate than the nation since 1995



Sources: SANDAG; FBI

Additional analyses of data for the first three quarters of 2021 of a sample of cities with populations of 500,000 or more revealed that seven had fewer property crimes reported in 2021, compared to 2020, and six had more (Table 2).

Table 2

Seven large U.S. cities had fewer property crimes in 2021 compared to 2020 and six had more

	Jan-Sept 2020	Jan-Sept 2021	Percent change
Honolulu, HI	18,252	12,919	-29%
Boston, MA	9,826	8,082	-18%
Detroit, MI	16,049	14,556	-9%
Dallas, TX	34,750	31,637	-9%
Albuquerque, NM	21,115	19,728	-7%
Memphis, TN	26,698	25,037	-6%
Oklahoma, OK	19,336	19,163	-1%
Columbus, OH	21,318	21,386	<1%
Seattle, WA	26,985	27,857	3%
Las Vegas, NV	28,136	29,958	6%
Portland, OR	23,520	25,125	7%
Denver, CO	24,075	32,073	33%
Milwaukee, WI	11,354	17,699	56%

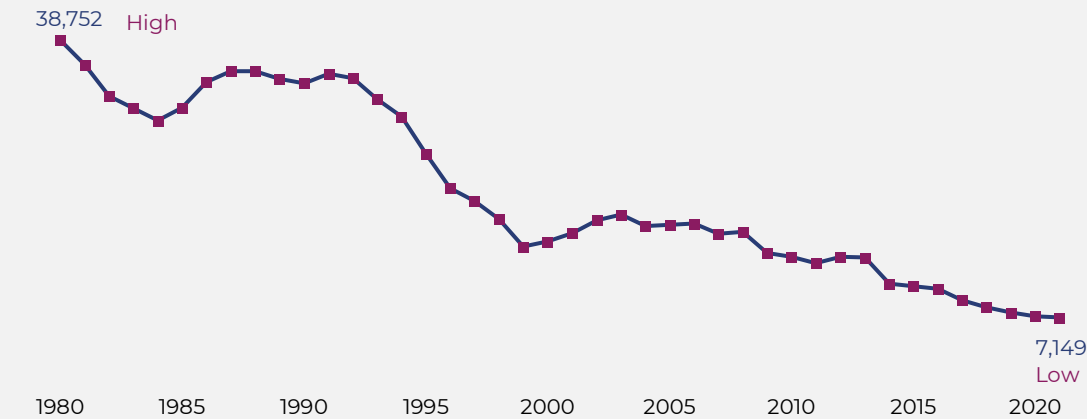
Source: FBI

Burglary

Burglary is the unlawful entry of a structure to commit a felony or theft. As shown in Figure 9, the number of burglaries (including residential and non-residential) reported in the region declined between 1980 and 1984 and then began an upward trend, reaching 35,233 in 1988. Three years later, an eight-year decline began, that was followed by a small number of increases, and then a general decline. The 7,149 reported burglaries in 2021 represented the lowest number in the past 42 years and the ninth consecutive decrease (Appendix Tables 1 and 8). Burglary was the only property crime to decrease in number from 2020 to 2021.

Figure 9

Number of burglaries decreased for the ninth consecutive year



Source: SANDAG

How were burglaries accomplished? In 2021, almost two in five (38%) were categorized as no forced entry, 58% as forced entry, and 4% as attempted/unsuccessful (not shown).

Of the 7,149 burglaries reported in the San Diego region in 2021, 45% were residential, which equates to 1 in every 359 households being burglarized – five years ago this ratio was 1 in every 215 (Appendix Tables 13 and 14). Over the past year, the number of residential burglaries decreased by 1% (from 3,260 in 2020 to 3,226 in 2021), while the number of non-residential burglaries increased by 3% (4,041 in 2020 to 3,923 in 2021) (not shown).

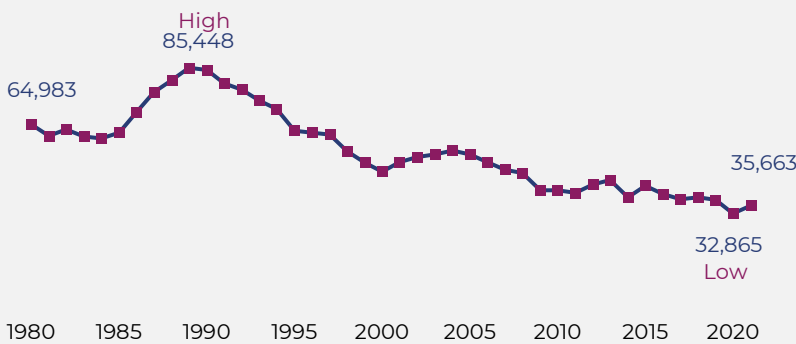
Over the past year, 12 jurisdictions reported one-year decreases in the number of burglaries (ranging from -1% in Oceanside to -25% in La Mesa) and 8 had increases (from 1% in Carlsbad to 73% in Valley Center) (Appendix Tables 13 and 14).

Larceny

Larceny, or theft, is the most common crime, with 1 in every 94 residents a victim in 2021 (not shown). In the early 1980s, the number of larcenies fluctuated; but beginning in 1985, the number of larcenies began an upward trend, peaking at 85,448 in 1989, and then decreasing to a then low in 2000. Since then, there have been increases and decreases, with a 9% increase from 2020 (32,865) to 2021 (35,663) (Figure 10 and Appendix Tables 1 and 8). While this increase was not small, the 2021 number was still the second lowest in the past 42 years.

Figure 10

Larcenies up in 2021



Source: SANDAG

The most common larceny type (historically and in 2021) was theft from inside motor vehicles (41%), with the second most common from buildings (24%), other (11%), and shoplifting (9%). Three types of larcenies were down over the past year (theft of bicycles <-1%, shoplifting -9%, and pickpocketing -20%), but the others were up, including other types (1%), from buildings (4%), from motor vehicles (11%), and motor vehicle parts (71%). Forty-six percent (46%) of larcenies in 2021 were petty thefts involving property valued at \$400 or less (not shown).

Across the region, 18 of the jurisdictions reported an annual increase in the number of larcenies (ranging from <1% in El Cajon to 63% in Del Mar) and 6 reported decreases (from -5% in Escondido and Alpine to -36% in 4S Ranch) (Appendix Table 13 and 14).

Identity theft

While Part I property crime was the second lowest it has been in the past 42 years, it is important to note that identity theft, which various sources have noted is increasing, is currently not captured in the statistics presented here.

What do we know about identity theft nationally? According to the Bureau of Justice Statistics,⁹ in 2018 9% of all U.S. residents age 16 or older have been victims of identity theft in the past 12 months. Additionally, Whites, those between 35 and 49, and those with higher household incomes were more likely to be identity theft victims. Around half (46%) of those who reported a recent victimization said that they discovered the theft when they were contacted by a financial institution and an estimated 7% of all identity-theft victims reported the crime to police. Three-quarters (75%) did not know how the offender obtained their personal information and 94% did not know anything about the offender.

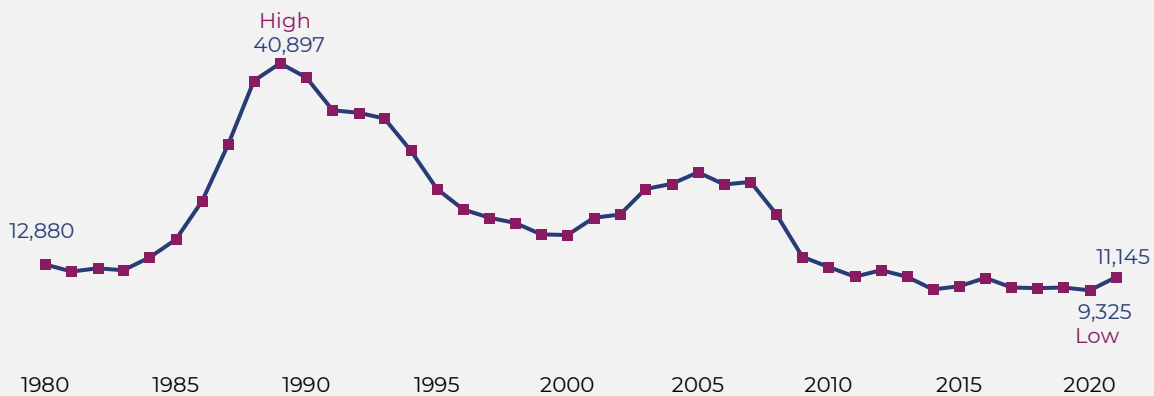
⁹ Harrell, E. (2021). *Victims of identity theft, 2018*. (NCJ 256085). Washington, D.C.: Bureau of Justice Statistics.

Motor vehicle theft

Figure 11 shows the number of motor vehicle thefts in the region for the past 42 years. Starting in 1983, the number of motor vehicles stolen in the San Diego region increased annually, reaching a high in 1989 of 40,897. Similar to the other property crimes, this upward trend was followed by a shorter period of decreases, a short period of increases, and then a decline to the low of 9,460 in 2014 (Appendix Table 8). Since then, there have been fluctuations, with an increase of 20% this past year, from 9,325 in 2020 to 11,145 in 2021 (Appendix Table 1). The 2021 number equates to 1 in every 255 registered motor vehicles being stolen that year. In terms of dollar amount, the value of these stolen vehicles was estimated at almost \$122.97 million, representing 50% of the total value of property stolen (not shown).

Figure 11

Motor vehicle theft up in 2021



Source: SANDAG

Across the 20 jurisdictions with more than 30 incidents of motor vehicle theft reported in 2020 and 2021, two reported one-year decreases (-3% in Vista and -28% in Spring Valley), one reported no change (Fallbrook), and 17 reported increases (ranging from 2% in San Marcos to 78% in Valley Center) (Appendix Tables 13 and 14).

Arson

Unlike other FBI Index offenses, when arson is committed in concert with another FBI Index offense, both incidents must be reported, which is why arson is presented separately from other property crime statistics. There were 453 arsons reported in 2021, which was a 18% decrease from the 552 reported in 2020 (Appendix Tables 13 and 14). Twenty-five percent (25%) of arsons in 2021 were of structures (compared to 21% last year) and 75% were categorized as mobile and other non-structural property types (not shown).

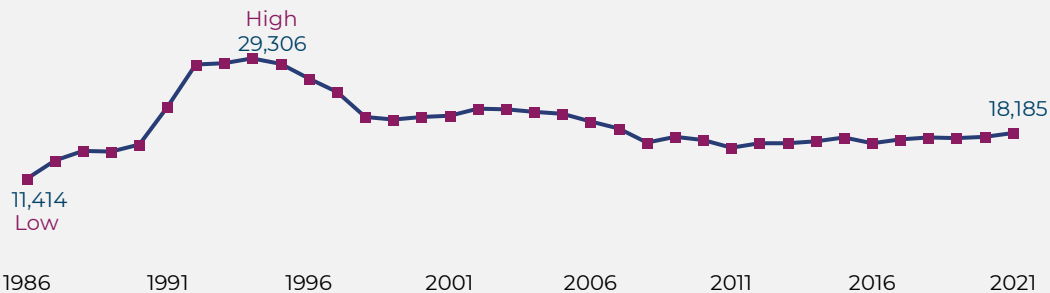
Domestic violence

Law enforcement agencies also track domestic violence incidents, some of which are included in the previously reported numbers in this bulletin. For example, a domestic violence incident could include a Part I violent crime (e.g., aggravated assault) or some type of property crime (e.g., burglary). Since 1986, when mandatory reporting was enacted, the number of domestic violence incidents has varied from 11,414 in that year to a high of 29,306 in 1994 (Figure 12). In 2021, a total of 18,185 incidents were reported to law enforcement, a 3% increase from 2020 (Appendix Table 9).

Across the jurisdictions (with large enough numbers to compare), nine reported one-year increases in the number of domestic violence incidents (ranging from <1% in Imperial Beach to 37% in Lemon Grove), seven reported decreases (ranging from -1% in National City and Vista to -14% in Escondido), and one had no change (San Marcos) (Appendix Table 9).

Figure 12

Number of reported domestic violence cases up slightly in 2021



Source: SANDAG

Hate crimes

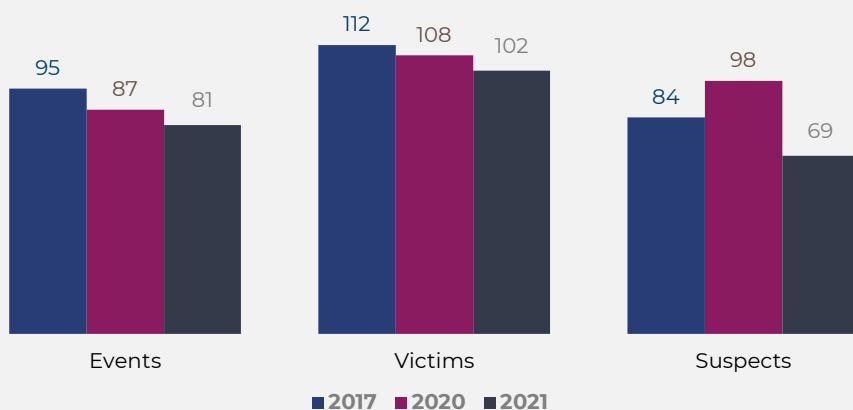
As part of California Penal Code, the Attorney General is required to submit an annual report to the Legislature regarding crimes motivated by a victim's race, ethnicity, religion, gender, sexual orientation, national origin, or physical or mental disability. Beginning in 2008, SANDAG asked local law enforcement agencies to share hate crime reports that were to be submitted to the state to allow for more timely statistics, as well as more detailed analysis for San Diego County not available in the state report.

According to the California Penal Code, a hate crime is a criminal act committed in whole or in part because of the actual or perceived characteristics of the victim (described previously). Thus, hate crimes are not separate, distinct crimes, but rather traditional offenses specifically motivated by the offender's bias. In 2021, a total of 81 hate crime events were reported by law enforcement from across the region, which included a total of 102 victims and 69 known suspects. Compared to last year, the number of events decreased by 7% (Figure 13).

In 2021, hate crimes were reported by police departments in Carlsbad, Chula Vista, Coronado, El Cajon, Escondido, La Mesa, National City, Oceanside, and San Diego; the Sheriff's Department (for the jurisdictions of Alpine, Imperial Beach, Lemon Grove, San Marcos, Santee, and other unincorporated areas); the Harbor Police; and California State University San Marcos (not shown).

Figure 13

Number of hate crime events and victims down in 2021 from 2020



Source: SANDAG

Other hate crime information compiled for this summary includes the following:

- Of the 81 events, 70% appeared motivated by race, ethnicity, or national origin; 21% by sexual orientation; and 9% by religion. Of the 57 incidents related to the victim's actual or perceived race/ethnicity/national origin, 49% of bias motivation was described as being anti-Black, 18% anti-Asian/Pacific Islander, 11% anti-Hispanic; 9% anti-White, 5% each anti-multiple race and other races; and 4% anti-Arab.
- Of the 81 events, the type of victim was an individual (or multiple individuals) for 88%, 6% a business, 2% government, 2% a religious organization, and 1% other. Fifty-six percent (56%) of events in which the victim's gender was documented were male.
- Of the 81 events, 27% occurred at a business; 21% at a residence/home/driveway; 16% on a highway, road, alley, or street; 11% in a parking lot or garage; 11% somewhere else; 8% in an outdoor location; 2% at a school or college; 2% at a church, synagogue, or temple; and 1% in a jail or prison.
- Of the 85 documented offenses (there can be multiple offenses for one event), 74% were described as violent, which included 27 acts of intimidation, 19 aggravated assaults, 13 simple assaults, and 1 robbery. The rest (26%) were property-related and included 23 incidents of destruction or damaging of property in some way, including vandalism (not shown).

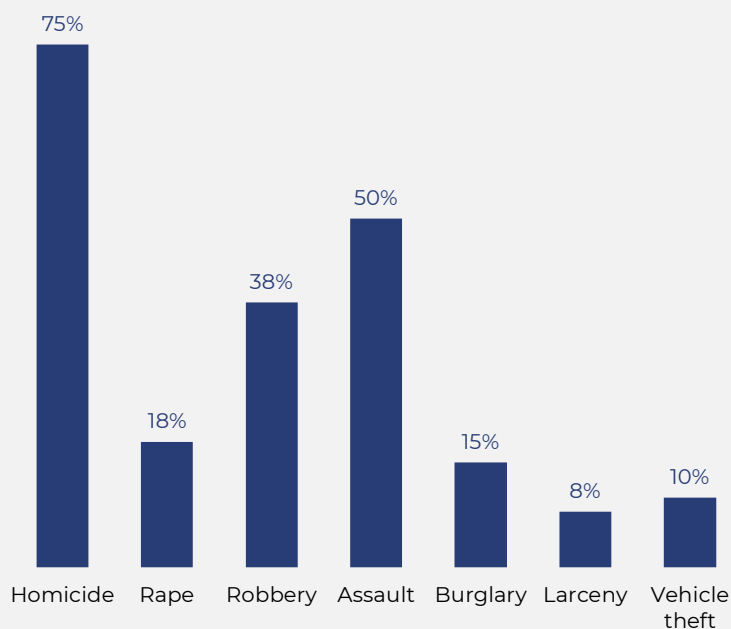
Clearance rates

A crime can be cleared for reporting purposes when at least one person is arrested or by “exceptional means” (e.g., offender’s death, extradition, etc.).¹⁰ Not surprisingly, the clearance rates in 2021 varied by crime type, with violent crimes cleared more frequently than property crimes. Overall, 45% of violent crimes that were open for investigation in the region were cleared (with a range across jurisdictions of 37% in Chula Vista to 115% in Alpine), compared to 9% of property crimes (with a range of 6% in Chula Vista and San Diego to 36% in Santee) (Appendix Tables 15 and 16).

As Figure 14 shows, the crimes of homicide and aggravated assault had the highest clearance rates, which is related to the fact that these crimes receive maximum resources given the seriousness of the crime and (for assault) involve individuals with face-to-face contact who also may already know one another. While the motor vehicle theft clearance rate is the second lowest of the seven Part I crimes, it is important to note that the vehicle recovery rate is considerably higher¹¹ (not shown).

Figure 14

Regional clearance rates in 2021 vary by offense



Source: SANDAG

Summary

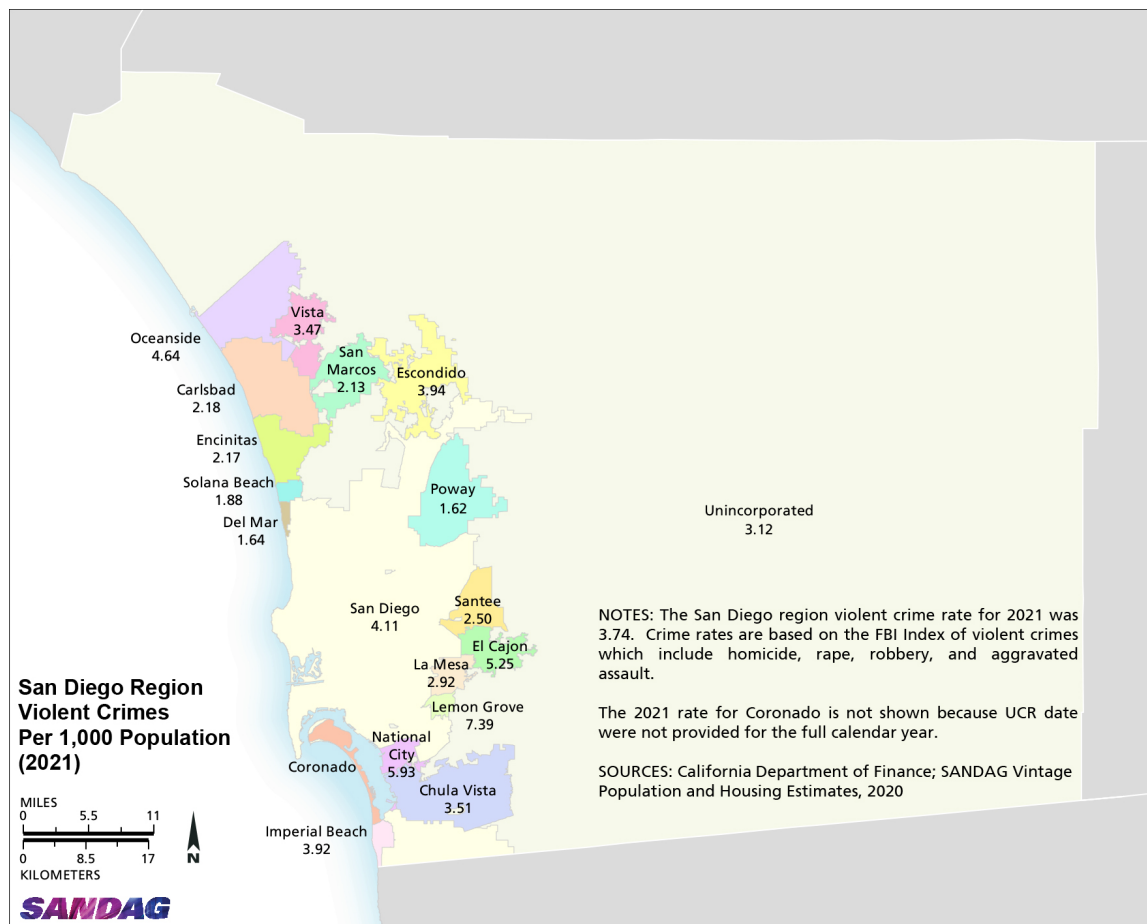
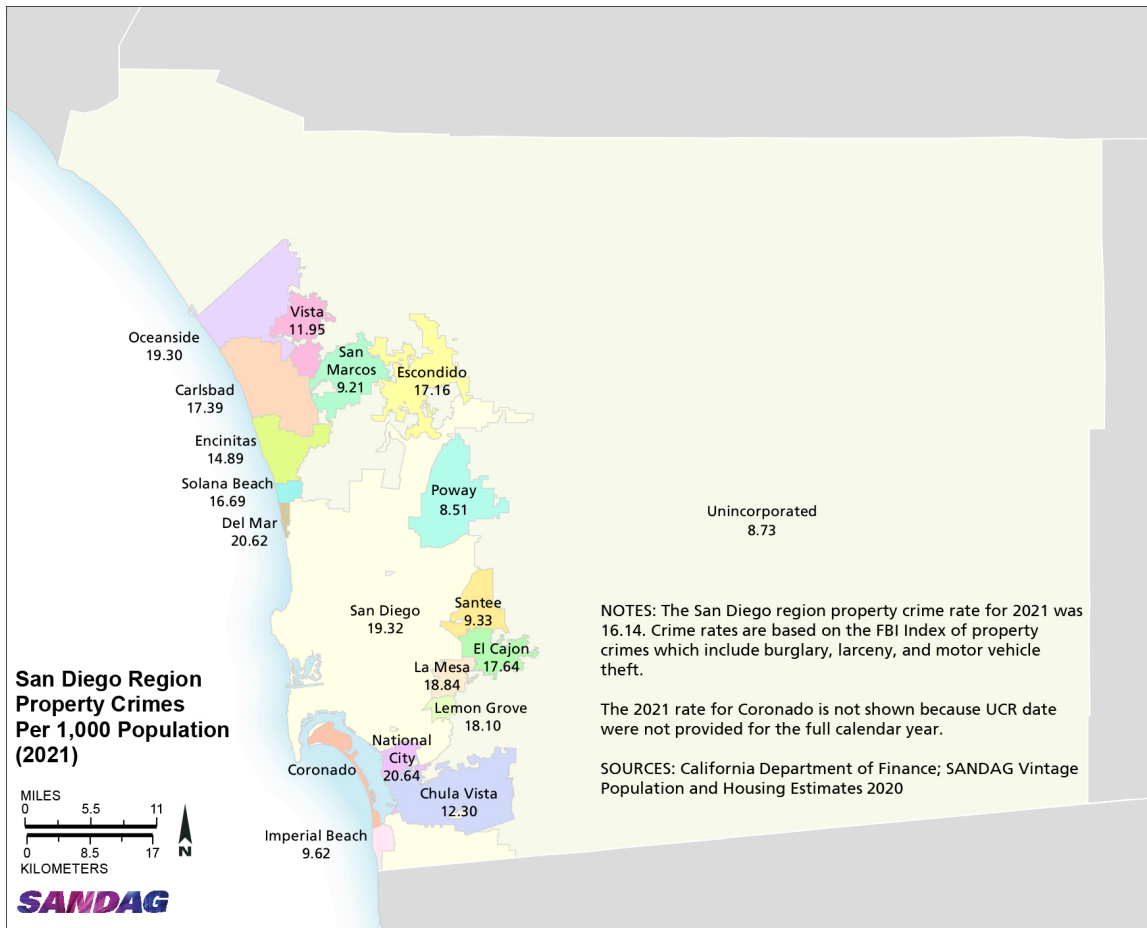
In 2021, the violent crime rate for the San Diego region was 8% higher than it was in 2020. Homicides, rapes, and aggravated assaults were up, but robberies were down. The property crime rate for the region increased 9% the past year but was still the second lowest in the past 42 years. There were decreases in the number of burglaries but increases in the number of larcenies and motor vehicle thefts.

For those interested in more detailed 2021 statistics, please contact the Criminal Justice Research Clearinghouse at (619) 699-1900.

For those interested in more recent statistics for a specific area of San Diego County, as well as maps of specific areas, please visit the ARJIS website at arjis.org.

¹⁰ It is important to note that a crime can occur in one calendar year but be cleared in that year or a future year.

¹¹ Motor vehicles represented 50% of stolen property in terms of dollar value, but 89% of the value of recovered property in 2021.



Appendix Table 1
Number of crimes by offense
 San Diego region, 2017, 2020, and 2021

	2017	2020	2021	Change	
				2017-2021	2020-2021
Homicide	80	115	118	48%	3%
Rape	1,098	967	1,072	-2%	11%
Robbery	3,013	2,527	2,418	-20%	-4%
Aggravated assault	7,098	7,913	8,887	25%	12%
Violent crime – Total	11,289	11,522	12,495	11%	8%
Burglary	9,120	7,301	7,149	-22%	-2%
Larceny theft	37,942	32,865	35,663	-6%	9%
Motor vehicle theft	9,731	9,325	11,145	15%	20%
Property crime – Total	56,793	49,491	53,957	-5%	9%
FBI Index	68,082	61,013	66,452	-2%	9%

Source: SANDAG

Appendix Table 2
FBI Index Crime rates per 1,000 population by jurisdiction
San Diego region, 2017, 2020, and 2021

	2017	2020	2021	Change	
				2017-2021	2020-2021
Carlsbad	21.74	18.04	19.57	-10%	8%
Chula Vista	17.66	15.33	15.80	-11%	3%
Coronado	16.28	13.42	--	--	--
El Cajon	26.60	22.76	22.88	-14%	1%
Escondido	20.94	21.35	21.10	1%	-1%
La Mesa	22.64	20.29	21.76	-4%	7%
National City	23.64	24.33	26.57	12%	9%
Oceanside	27.08	21.98	23.94	-12%	9%
San Diego	22.39	20.71	23.42	5%	13%
Sheriff – Total	15.07	12.24	13.07	-13%	7%
Del Mar	36.99	18.51	22.26	-40%	20%
Encinitas	16.59	13.01	17.06	3%	31%
Imperial Beach	18.00	13.47	13.54	-25%	1%
Lemon Grove	29.88	21.38	25.48	-15%	19%
Poway	12.85	8.49	10.13	-21%	19%
San Marcos	14.17	11.98	11.34	-20%	-5%
Santee	18.04	10.67	11.83	-34%	11%
Solana Beach	17.62	12.21	18.57	5%	52%
Vista	18.30	15.04	15.42	-16%	3%
Unincorporated	12.93	11.52	11.85	-8%	3%
4S Ranch	7.66	6.63	5.88	-23%	-11%
Alpine	9.28	10.34	9.33	1%	-10%
Fallbrook	11.60	14.76	14.58	26%	-1%
Lakeside	12.08	8.86	8.93	-26%	1%
Ramona	8.43	5.43	6.38	-24%	17%
Spring Valley	17.40	15.64	13.15	-24%	-16%
Valley Center	18.45	15.34	21.61	17%	41%
Total	20.59	18.25	19.88	-3%	9%

Note: The FBI Crime Index includes homicide, rape, robbery, aggravated assault, burglary, larceny, and motor vehicle theft. The 2021 rate for Coronado is not shown because UCR crime data were not provided for the full calendar year. "Sheriff-Total" includes the contract cities and the unincorporated area served by the San Diego County Sheriff's Department, as well as crimes reported in the Sheriff's "other" category that includes the Sheriff's detention facilities, courts staffed by the Sheriff, and crimes reported to the Sheriff that were determined to have occurred in a city not served by the Sheriff or a location for which jurisdiction could not be determined. Camp Pendleton is not included. "Unincorporated" includes 4S Ranch, Alpine, Fallbrook, Lakeside, Ramona, Spring Valley, and Valley Center, as well as the unincorporated areas for which crime data are not individually shown (Campo, Julian, Pine Valley, Ranchita, and the unincorporated areas of Encinitas, Imperial Beach, Lemon Grove, Poway, San Marcos, Santee, and Vista). Unincorporated statistics have also been updated to exclude crimes now categorized in the Sheriff's "other" category. Percent changes are based on computed crime rates rounded to the precision level of two decimal places. Populations used to compute crime rates reflect the most current California Department of Finance estimates.

Sources: California Department of Finance; SANDAG Population and Housing Estimates v2020, 2019-2020

Appendix Table 3
FBI Index Violent Crime rates per 1,000 population by jurisdiction
San Diego region, 2017, 2020, and 2021

	2017	2020	2021	Change	
				2017-2021	2020-2021
Carlsbad	2.19	1.96	2.18	<-1%	11%
Chula Vista	3.04	3.37	3.51	15%	4%
Coronado	1.20	0.94	--	--	--
El Cajon	4.14	4.90	5.25	27%	7%
Escondido	3.79	3.72	3.94	4%	6%
La Mesa	2.68	3.02	2.92	9%	-3%
National City	4.82	5.65	5.93	23%	5%
Oceanside	3.93	4.05	4.64	18%	15%
San Diego	3.71	3.71	4.11	11%	11%
Sheriff – Total	2.99	2.86	2.99	0%	5%
Del Mar	2.81	1.87	1.64	--	--
Encinitas	1.71	2.14	2.17	27%	1%
Imperial Beach	4.82	3.39	3.92	-19%	16%
Lemon Grove	6.48	5.54	7.39	14%	33%
Poway	1.18	1.07	1.62	37%	51%
San Marcos	2.08	2.00	2.13	2%	7%
Santee	2.74	2.88	2.50	-9%	-13%
Solana Beach	0.95	1.01	1.88	--	--
Vista	3.63	3.35	3.47	-4%	4%
Unincorporated	3.18	3.10	3.12	-2%	1%
4S Ranch	0.55	0.22	0.36	--	--
Alpine	1.92	2.51	1.64	-15%	-35%
Fallbrook	2.29	2.17	2.42	6%	12%
Lakeside	2.66	2.88	2.40	-10%	-17%
Ramona	1.98	1.77	1.92	-3%	8%
Spring Valley	4.86	4.41	4.38	-10%	-1%
Valley Center	4.57	3.32	3.49	-24%	5%
Total	3.41	3.45	3.74	10%	8%

Note: The FBI Index Violent Crimes include homicide, rape, robbery, and aggravated assault. The 2021 rate for Coronado is not shown because UCR crime data were not provided for the full calendar year. "Sheriff-Total" includes the contract cities and the unincorporated area served by the San Diego County Sheriff's Department, as well as crimes reported in the Sheriff's "other" category that includes the Sheriff's detention facilities, courts staffed by the Sheriff, and crimes reported to the Sheriff that were determined to have occurred in a city not served by the Sheriff or a location for which jurisdiction could not be determined. Camp Pendleton is not included. "Unincorporated" includes 4S Ranch, Alpine, Fallbrook, Lakeside, Ramona, Spring Valley, and Valley Center, as well as the unincorporated areas for which crime data are not individually shown (Campo, Julian, Pine Valley, Ranchita, and the unincorporated areas of Encinitas, Imperial Beach, Lemon Grove, Poway, San Marcos, Santee, and Vista). Unincorporated statistics have also been updated to exclude crimes now categorized in the Sheriff's "other" category. Percent changes are based on computed crime rates rounded to the precision level of two decimal places. Populations used to compute crime rates reflect the most current California Department of Finance estimates. Percent changes are not presented if either comparison number equals 30 or less.

Sources: California Department of Finance; SANDAG Preliminary Vintage Population and Housing Estimates v2020, 2019-2020

Appendix Table 4
FBI Index Property Crime rates per 1,000 population by jurisdiction
 San Diego region, 2017, 2020, and 2021

	2017	2020	2021	Change	
				2017-2021	2020-2021
Carlsbad	19.55	16.08	17.39	-11%	8%
Chula Vista	14.62	11.97	12.30	-16%	3%
Coronado	15.09	12.49	--	--	--
El Cajon	22.47	17.86	17.64	-21%	-1%
Escondido	17.15	17.63	17.16	<1%	-3%
La Mesa	19.96	17.28	18.84	-6%	9%
National City	18.83	18.68	20.64	10%	10%
Oceanside	23.16	17.93	19.30	-17%	8%
San Diego	18.67	17.00	19.32	3%	14%
Sheriff – Total	12.08	9.38	10.08	-17%	7%
Del Mar	34.18	16.64	20.62	-40%	24%
Encinitas	14.88	10.87	14.89	<1%	37%
Imperial Beach	13.18	10.09	9.62	-27%	-5%
Lemon Grove	23.40	15.83	18.10	-23%	14%
Poway	11.68	7.42	8.51	-27%	15%
San Marcos	12.10	9.99	9.21	-24%	-8%
Santee	15.30	7.79	9.33	-39%	20%
Solana Beach	16.67	11.20	16.69	<1%	49%
Vista	14.66	11.69	11.95	-18%	2%
Unincorporated	9.75	8.42	8.73	-10%	4%
4S Ranch	7.11	6.41	5.52	-22%	-14%
Alpine	7.36	7.82	7.68	4%	-2%
Fallbrook	9.30	12.58	12.16	31%	-3%
Lakeside	9.42	5.98	6.53	-31%	9%
Ramona	6.44	3.66	4.46	-31%	22%
Spring Valley	12.53	11.23	8.77	-30%	-22%
Valley Center	13.88	12.02	18.11	30%	51%
Total	17.17	14.80	16.14	-6%	9%

Note: FBI Index Property Crimes include larceny, burglary, and motor vehicle theft. The 2021 rate for Coronado is not shown because UCR crime data were not provided for the full calendar year. "Sheriff-Total" includes the contract cities and the unincorporated area served by the San Diego County Sheriff's Department, as well as crimes reported in the Sheriff's "other" category that includes the Sheriff's detention facilities, courts staffed by the Sheriff, and crimes reported to the Sheriff that were determined to have occurred in a city not served by the Sheriff or a location for which jurisdiction could not be determined. Camp Pendleton is not included. "Unincorporated" includes 4S Ranch, Alpine, Fallbrook, Lakeside, Ramona, Spring Valley, and Valley Center, as well as the unincorporated areas for which crime data are not individually shown (Campo, Julian, Pine Valley, Ranchita, and the unincorporated areas of Encinitas, Imperial Beach, Lemon Grove, Poway, San Marcos, Santee, and Vista). Unincorporated statistics have also been updated to exclude crimes now categorized in the Sheriff's "other" category. Percent changes are based on computed crime rates rounded to the precision level of two decimal places. Populations used to compute crime rates reflect the most current California Department of Finance estimates.

Sources: California Department of Finance; SANDAG Population and Housing Estimates v2020, 2019-2020

Appendix Table 5
FBI Index Crimes by jurisdiction
San Diego region, 2017, 2020, and 2021

	2017	2020	2021	Change	
				2017-2021	2020-2021
Carlsbad	2,456	2,065	2,240	-9%	8%
Chula Vista	4,691	4,173	4,302	-8%	3%
Coronado	395	287	--	--	--
El Cajon	2,759	2,376	2,389	-13%	1%
Escondido	3,181	3,266	3,228	1%	-1%
La Mesa	1,353	1,217	1,305	-4%	7%
National City	1,453	1,511	1,650	14%	9%
Oceanside	4,781	3,898	4,245	-11%	9%
San Diego	31,468	29,625	33,508	6%	13%
Sheriff – Total	13,601	11,082	11,828	-13%	7%
Del Mar	158	79	95	-40%	20%
Encinitas	1,031	809	1,061	3%	31%
Imperial Beach	497	378	380	-24%	1%
Lemon Grove	789	567	676	-14%	19%
Poway	634	419	500	-21%	19%
San Marcos	1,331	1,165	1,102	-17%	-5%
Santee	1,021	619	686	-33%	11%
Solana Beach	242	169	257	6%	52%
Vista	1,864	1,548	1,587	-15%	3%
Unincorporated	6,034	5,329	5,484	-9%	3%
4S Ranch	180	149	132	-27%	-11%
Alpine	271	296	267	-1%	-10%
Fallbrook	622	774	765	23%	-1%
Lakeside	673	483	487	-28%	1%
Ramona	302	190	223	-26%	17%
Spring Valley	1,277	1,106	930	-27%	-16%
Valley Center	444	360	507	14%	41%
Other Sheriff	427	399	369	-14%	-8%
California Highway Patrol	147	179	130	-12%	-27%
California State University San Marcos	26	17	7	--	--
San Diego State University	562	232	277	-51%	19%
UC San Diego	613	450	468	-24%	4%
San Diego Harbor Police	523	529	637	22%	20%
California State Parks	73	106	--	--	--
Total	68,082	61,013	66,452	-2%	9%

Note: The FBI Crime Index includes homicide, rape, robbery, aggravated assault, burglary, larceny, and motor vehicle theft. The total includes the 219 crimes reported by Coronado in the first seven months of 2021, but crimes reported in the last seven months were not available for this report due to the agency's transfer to the new reporting system. California State Parks also did not report 2021 data for the entire calendar year. "Sheriff-Total" includes the contract cities and the unincorporated area served by the San Diego County Sheriff's Department, as well as crimes reported in the Sheriff's "other" category that includes the Sheriff's detention facilities, courts staffed by the Sheriff, and crimes reported to the Sheriff that were determined to have occurred in a city not served by the Sheriff or a location for which jurisdiction could not be determined. Camp Pendleton is not included. "Unincorporated" includes 4S Ranch, Alpine, Fallbrook, Lakeside, Ramona, Spring Valley, and Valley Center, as well as the unincorporated areas for which crime data are not individually shown (Campo, Julian, Pine Valley, Ranchita, and the unincorporated areas of Encinitas, Imperial Beach, Lemon Grove, Poway, San Marcos, Santee, and Vista). Unincorporated statistics have also been updated to exclude crimes now categorized in the Sheriff's "other" category. Percent changes are not presented if either comparison number equals 30 or less.

Source: SANDAG

Appendix Table 6
FBI Index Violent Crimes by jurisdiction
San Diego region, 2017, 2020, and 2021

	2017	2020	2021	Change	
				2017-2021	2020-2021
Carlsbad	247	224	250	1%	12%
Chula Vista	808	916	955	18%	4%
Coronado	29	20	--	--	--
El Cajon	429	512	548	28%	7%
Escondido	576	569	603	5%	6%
La Mesa	160	181	175	9%	-3%
National City	296	351	368	24%	5%
Oceanside	693	718	822	19%	14%
San Diego	5,222	5,304	5,875	13%	11%
Sheriff – Total	2,699	2,591	2,708	<1%	5%
Del Mar	12	8	7	--	--
Encinitas	106	133	135	27%	2%
Imperial Beach	133	95	110	-17%	16%
Lemon Grove	171	147	196	15%	33%
Poway	58	53	80	38%	51%
San Marcos	195	194	207	6%	7%
Santee	155	167	145	-6%	-13%
Solana Beach	13	14	26	--	--
Vista	370	345	357	-4%	3%
Unincorporated	1,486	1,435	1,445	-3%	1%
4S Ranch	13	6	8	--	--
Alpine	56	72	47	-16%	-35%
Fallbrook	123	114	127	3%	11%
Lakeside	148	157	131	-11%	-17%
Ramona	71	62	67	-6%	8%
Spring Valley	357	312	310	-13%	-1%
Valley Center	110	78	82	-25%	5%
Other Sheriff	310	257	283	-9%	10%
California Highway Patrol	33	26	9	--	--
California State University San Marcos	6	0	1	--	--
San Diego State University	15	10	20	--	--
UC San Diego	9	12	11	--	--
San Diego Harbor Police	62	80	137	121%	71%
California State Parks	5	8	--	--	--
Total	11,289	11,522	12,495	11%	8%

Note: FBI Index Violent Crimes include homicide, rape, robbery, and aggravated assault. The total violent crime number includes the 12 reported by Coronado in the first seven months of 2021 but does not include the 4 additional ones that occurred in the last five months of the year that were not reported due to the transition due to the new reporting system. California State Parks also did not report data for the full calendar year. "Sheriff-Total" includes the contract cities and the unincorporated area served by the San Diego County Sheriff's Department, as well as crimes reported in the Sheriff's "other" category that includes the Sheriff's detention facilities, courts staffed by the Sheriff, and crimes reported to the Sheriff that were determined to have occurred in a city not served by the Sheriff or a location for which jurisdiction could not be determined. Camp Pendleton is not included. "Unincorporated" includes 4S Ranch, Alpine, Fallbrook, Lakeside, Ramona, Spring Valley, and Valley Center, as well as the unincorporated areas for which crime data are not individually shown (Campo, Julian, Pine Valley, Ranchita, and the unincorporated areas of Encinitas, Imperial Beach, Lemon Grove, Poway, San Marcos, Santee, and Vista). Unincorporated statistics have also been updated to exclude crimes now categorized in the Sheriff's "other" category. Percent changes are not presented if either comparison number equals 30 or less.

Source: SANDAG

Appendix Table 7
FBI Index Property Crimes by jurisdiction
San Diego region, 2017, 2020, and 2021

	2017	2020	2021	Change	
				2017-2021	2020-2021
Carlsbad	2,209	1,841	1,990	-10%	8%
Chula Vista	3,883	3,257	3,347	-14%	3%
Coronado	366	267	--	--	--
El Cajon	2,330	1,864	1,841	-21%	-1%
Escondido	2,605	2,697	2,625	1%	-3%
La Mesa	1,193	1,036	1,130	-5%	9%
National City	1,157	1,160	1,282	11%	11%
Oceanside	4,088	3,180	3,423	-16%	8%
San Diego	26,246	24,321	27,633	5%	14%
Sheriff – Total	10,902	8,491	9,120	-16%	7%
Del Mar	146	71	88	-40%	24%
Encinitas	925	676	926	<1%	37%
Imperial Beach	364	283	270	-26%	-5%
Lemon Grove	618	420	480	-22%	14%
Poway	576	366	420	-27%	15%
San Marcos	1,136	971	895	-21%	-8%
Santee	866	452	541	-38%	20%
Solana Beach	229	155	231	1%	49%
Vista	1,494	1,203	1,230	-18%	2%
Unincorporated	4,548	3,894	4,039	-11%	4%
4S Ranch	167	144	124	-26%	-14%
Alpine	215	224	220	2%	-2%
Fallbrook	499	660	638	28%	-3%
Lakeside	525	326	356	-32%	9%
Ramona	231	128	156	-32%	22%
Spring Valley	920	794	620	-33%	-22%
Valley Center	334	282	425	27%	51%
Other Sheriff	117	142	86	-26%	-39%
California Highway Patrol	114	153	121	6%	-21%
California State University San Marcos	20	17	6	--	--
San Diego State University	547	222	257	-53%	16%
UC San Diego	604	438	457	-24%	4%
San Diego Harbor Police	461	449	500	8%	11%
California State Parks	68	98	--	--	--
Total	56,793	49,491	53,957	-5%	9%

Note: FBI Index Property Crimes include larceny, burglary, and motor vehicle theft. The total property crime number includes the 207 reported by Coronado in the first seven months of 2021 but does not include the 120 additional ones that occurred in the last five months of the year that were not reported due to the transition due to the new reporting system. California State Parks also did not report crime data for the full 2021 calendar year. "Sheriff-Total" includes the contract cities and the unincorporated area served by the San Diego County Sheriff's Department, as well as crimes reported in the Sheriff's "other" category that includes the Sheriff's detention facilities, courts staffed by the Sheriff, and crimes reported to the Sheriff that were determined to have occurred in a city not served by the Sheriff or a location for which jurisdiction could not be determined. Camp Pendleton is not included. "Unincorporated" includes 4S Ranch, Alpine, Fallbrook, Lakeside, Ramona, Spring Valley, and Valley Center, as well as the unincorporated areas for which crime data are not individually shown (Campo, Julian, Pine Valley, Ranchita, and the unincorporated areas of Encinitas, Imperial Beach, Lemon Grove, Poway, San Marcos, Santee, and Vista). Unincorporated statistics have also been updated to exclude crimes now categorized in the Sheriff's "other" category. Percent changes are not presented if either comparison number equals 30 or less.

Source: SANDAG

Appendix Table 8
Number of crimes by offense
 San Diego region, 2012–2021

	Homicide	Rape	Robbery	Aggravated assault	Residential burglary	Non-residential burglary	Total burglary	Larceny over \$400	Larceny \$400 and under	Total larceny	Motor vehicle theft	FBI Crime Index	California Crime Index	Population
2012	107	692	3,200	7,840	9,375	4,701	14,076	17,984	25,427	43,411	12,135	81,461	38,050	3,161,809
2013	70	668	3,054	7,380	8,659	5,312	13,971	18,836	26,198	45,034	11,273	81,450	36,416	3,199,901
2014	74	763	2,705	7,041	6,846	4,114	10,960	15,572	23,057	38,629	9,460	69,632	31,003	3,232,763
2015	84	1,100	2,798	6,956	6,995	3,736	10,731	17,328	25,477	42,805	9,909	74,383	31,578	3,265,039
2016	101	1,088	2,777	6,994	6,435	3,947	10,382	16,861	23,094	39,955	11,023	72,320	32,365	3,285,151
2017	80	1,098	3,013	7,098	5,267	3,853	9,120	16,103	21,839	37,942	9,731	68,082	30,140	3,306,890
2018	87	1,162	2,980	7,173	4,683	3,602	8,285	17,481	21,334	38,815	9,587	68,089	29,274	3,326,317
2019	85	1,105	2,888	7,324	3,935	3,757	7,692	17,285	20,563	37,848	9,682	66,624	28,776	3,340,302
2020	115	967	2,527	7,913	3,260	4,041	7,301	15,518	17,347	32,865	9,325	61,013	28,148	3,343,349
2021	118	1,072	2,418	8,887	3,226	3,923	7,149	19,256	16,407	35,663	11,145	66,452	30,789	3,343,349

Note: The FBI Crime Index includes homicide, rape, robbery, and aggravated assault in the violent category and burglary, larceny, and motor vehicle theft in the property category. The California Crime Index includes all FBI Index offenses except larceny.

Sources: California Department of Finance; SANDAG Population and Housing Estimates v2020, 2019-2020; SANDAG Crime Statistics

Appendix Table 9
Number of domestic violence incidents by jurisdiction
 San Diego region, 2017, 2020, and 2021

	2017	2020	2021	Change	
				2017-2021	2020-2021
Carlsbad	519	545	573	10%	5%
Chula Vista	1,331	1,501	1,630	22%	9%
Coronado	46	45	--	--	--
El Cajon	887	1,089	1,117	26%	3%
Escondido	1,084	1,084	935	-14%	-14%
La Mesa	503	438	556	11%	27%
National City	468	681	673	44%	-1%
Oceanside	969	940	917	-5%	-2%
San Diego	7,139	6,802	7,086	-1%	4%
Sheriff – Total	4,238	4,470	4,557	8%	2%
Del Mar	16	6	10	--	--
Encinitas	178	158	193	8%	22%
Imperial Beach	202	209	210	4%	<1%
Lemon Grove	177	199	272	54%	37%
Poway	120	135	119	-1%	-12%
San Marcos	310	344	344	11%	0%
Santee	254	290	257	1%	-11%
Solana Beach	23	41	38	--	-7%
Vista	570	601	597	5%	-1%
Unincorporated	2,388	2,487	2,517	5%	1%
Total	17,306	17,679	18,185	5%	3%

Note: "Sheriff-Total" includes the contract cities and the unincorporated area served by the San Diego County Sheriff's Department. The 2021 number for Coronado is not shown because UCR crime data was not provided for the full calendar year. Camp Pendleton is not included. "Unincorporated" includes 4S Ranch, Alpine, Fallbrook, Lakeside, Ramona, Spring Valley, and Valley Center, as well as the unincorporated areas for which crime data are not individually shown (Campo, Julian, Pine Valley, Ranchita, and the unincorporated areas of Encinitas, Imperial Beach, Lemon Grove, Poway, San Marcos, Santee, and Vista). The individual unincorporated areas in the Sheriff's jurisdiction are not required to report domestic violence to the State Department of Justice. Region total includes a relatively small number of incidents reported by the San Diego Harbor Police, California Highway Patrol, California State Parks, California State University San Marcos, San Diego State University, and University of California San Diego. Percent changes are not presented if either comparison number equals 30 or less.

Source: SANDAG

Appendix Table 10
Number of crimes by offense by jurisdiction
 San Diego region, 2017

	Homicide	Rape	Robbery	Aggravated assault	Residential burglary	Non-residential burglary	Total burglary	Larceny over \$400	Larceny \$400 and under	Total larceny	Motor vehicle theft	Arson	FBI Crime Index	California Crime Index
Carlsbad	0	30	46	171	231	201	432	697	941	1,638	139	18	2,456	818
Chula Vista	2	62	304	440	440	200	640	1,020	1,462	2,482	761	23	4,691	2,209
Coronado	0	4	5	20	17	10	27	165	146	311	28	2	395	84
El Cajon	1	48	163	217	230	184	414	537	965	1,502	414	12	2,759	1,257
Escondido	3	51	174	348	217	210	427	608	1,172	1,780	398	29	3,181	1,401
La Mesa	3	11	50	96	94	83	177	337	486	823	193	7	1,353	530
National City	3	23	109	161	68	64	132	285	382	667	358	11	1,453	786
Oceanside	9	69	165	450	311	281	592	1,053	1,947	3,000	496	22	4,781	1,781
San Diego	35	559	1,410	3,218	2,390	1,427	3,817	7,924	9,370	17,294	5,135	158	31,468	14,174
Sheriff – Total	24	227	562	1,886	1,234	1,074	2,308	2,828	4,065	6,893	1,701	59	13,601	6,708
Del Mar	0	1	0	11	16	22	38	56	39	95	13	0	158	63
Encinitas	0	13	23	70	115	93	208	321	330	651	66	2	1,031	380
Imperial Beach	1	5	34	93	52	17	69	71	140	211	84	1	497	286
Lemon Grove	1	4	55	111	57	36	93	139	283	422	103	0	789	367
Poway	0	8	13	37	61	75	136	156	233	389	51	3	634	245
San Marcos	0	25	54	116	85	117	202	305	479	784	150	4	1,331	547
Santee	0	11	43	101	55	54	109	197	468	665	92	1	1,021	356
Solana Beach	0	3	4	6	26	42	68	81	61	142	19	0	242	100
Vista	4	38	104	224	126	184	310	325	564	889	295	9	1,864	975
Unincorporated	18	119	232	1,117	641	434	1,075	1,177	1,468	2,645	828	39	6,034	3,389
4S Ranch	0	2	3	8	21	19	40	59	60	119	8	0	180	61
Alpine	1	5	6	44	24	20	44	48	75	123	48	0	271	148
Fallbrook	0	10	20	93	89	74	163	110	146	256	80	0	622	366
Lakeside	0	9	20	119	48	53	101	145	159	304	120	0	673	369
Ramona	1	9	10	51	27	29	56	56	86	142	33	0	302	160
Spring Valley	4	20	104	229	116	55	171	212	323	535	214	0	1,277	742
Valley Center	4	9	11	86	42	45	87	105	92	197	50	0	444	247
Other Sheriff	0	26	6	278	2	13	15	30	46	76	26	0	427	351
California Highway Patrol	0	1	1	31	1	7	8	8	36	44	62	0	147	103
California State University San Marcos	0	5	0	1	0	0	0	4	15	19	1	1	26	7
San Diego State University	0	2	11	2	25	48	73	130	330	460	14	1	562	102
UC San Diego	0	2	2	5	4	21	25	225	337	562	17	9	613	51
San Diego Harbor Police	0	4	11	47	3	38	41	258	158	416	4	0	523	107
California State Parks	0	0	0	5	2	5	7	24	27	51	10	1	73	22
Total	80	1,098	3,013	7,098	5,267	3,853	9,120	16,103	21,839	37,942	9,731	353	68,082	30,140

Notes: The FBI Crime Index includes homicide, rape, robbery, and aggravated assault in the violent category and burglary, larceny, and motor vehicle theft in the property category. The California Crime Index includes all FBI Index crimes except larceny. "Sheriff-Total" includes the contract cities and the unincorporated area served by the Sheriff, as well as crimes reported in the Sheriff's "other" category, which has previously included the Sheriff's detention facilities, courts staffed by the Sheriff, and crimes reported to the Sheriff that occurred in a city not served by the Sheriff or a location for which jurisdiction could not be determined.

Source: SANDAG

Appendix Table 11
Number of crimes by offense by jurisdiction
San Diego region, 2018

	Homicide	Rape	Robbery	Aggravated assault	Residential burglary	Non-residential burglary	Total burglary	Larceny over \$400	Larceny \$400 and under	Total larceny	Motor vehicle theft	Arson	FBI Crime Index	California Crime Index
Carlsbad	2	41	52	151	165	134	299	765	884	1,649	152	14	2,346	697
Chula Vista	6	79	256	494	350	235	585	1,005	1,333	2,338	688	20	4,446	2,108
Coronado	0	2	3	13	21	11	32	157	105	262	20	0	332	70
El Cajon	5	31	191	288	185	168	353	594	950	1,544	372	18	2,784	1,240
Escondido	4	64	159	308	176	181	357	741	1,150	1,891	488	12	3,271	1,380
La Mesa	1	13	67	79	92	65	157	302	458	760	132	6	1,209	449
National City	2	22	101	180	52	75	127	315	433	748	292	8	1,472	724
Oceanside	9	69	158	433	302	224	526	1,029	1,816	2,845	465	16	4,505	1,660
San Diego	35	605	1,439	3,281	2,287	1,465	3,752	9,143	9,339	18,482	5,182	187	32,776	14,294
Sheriff – Total	23	218	526	1,847	1,025	926	1,951	2,756	4,037	6,793	1,671	88	13,029	6,236
Del Mar	0	3	2	9	15	11	26	50	28	78	14	0	132	54
Encinitas	0	16	21	77	85	60	145	296	271	567	82	3	908	341
Imperial Beach	0	3	18	58	40	23	63	68	133	201	88	1	431	230
Lemon Grove	2	6	52	95	36	31	67	108	201	309	92	3	623	314
Poway	1	11	9	43	38	54	92	157	223	380	37	4	573	193
San Marcos	0	18	61	123	71	96	167	287	453	740	145	5	1,254	514
Santee	1	13	31	65	41	72	113	230	471	701	72	11	996	295
Solana Beach	1	2	3	17	37	25	62	68	55	123	21	0	229	106
Vista	5	32	104	189	128	138	266	309	617	926	305	2	1,827	901
Unincorporated	13	114	225	1,171	534	416	950	1,183	1,585	2,768	815	59	6,056	3,288
4S Ranch	0	1	6	4	17	19	36	66	58	124	10	0	181	57
Alpine	1	1	6	41	23	22	45	56	61	117	39	0	250	133
Fallbrook	2	9	24	75	50	68	118	99	159	258	86	0	572	314
Lakeside	1	12	23	133	62	58	120	160	0	335	123	0	747	412
Ramona	2	3	5	45	24	46	70	55	104	159	31	0	315	156
Spring Valley	2	14	70	238	99	48	147	202	351	553	197	0	1,221	668
Valley Center	1	13	12	99	29	26	55	72	66	138	53	0	371	233
Other Sheriff	1	31	8	295	6	13	19	31	46	77	30	0	461	384
California Highway Patrol	0	0	0	31	0	2	2	13	39	52	103	0	188	136
California State University San Marcos	0	1	1	0	1	1	2	8	19	27	1	0	32	5
San Diego State University	0	6	5	6	10	26	36	115	300	415	6	0	474	59
UC San Diego	0	5	2	9	15	21	36	174	252	426	9	1	487	61
San Diego Harbor Police	0	6	20	49	2	59	61	340	184	524	4	3	664	140
California State Parks	0	0	0	4	0	9	9	24	35	59	2	0	74	15
Total	87	1,162	2,980	7,173	4,683	3,602	8,285	17,481	21,334	38,815	9,587	373	68,089	29,274

Note: The FBI Crime Index includes homicide, rape, robbery, and aggravated assault in the violent category and burglary, larceny, and motor vehicle theft in the property category. The California Crime Index includes all FBI Index crimes except larceny. "Sheriff-Total" includes the contract cities and the unincorporated area served by the Sheriff, as well as crimes reported in the Sheriff's "other" category, which has previously included the Sheriff's detention facilities, courts staffed by the Sheriff, and crimes reported to the Sheriff that occurred in a city not served by the Sheriff or a location for which jurisdiction could not be determined.

Source: SANDAG

Appendix Table 12
Number of crimes by offense by jurisdiction
 San Diego region, 2019

	Homicide	Rape	Robbery	Aggravated assault	Residential burglary	Non-residential burglary	Total burglary	Larceny over \$400	Larceny \$400 and under	Total larceny	Motor vehicle theft	Arson	FBI Crime Index	California Crime Index
Carlsbad	3	40	39	158	134	163	297	718	953	1,671	167	11	2,375	704
Chula Vista	3	61	265	575	294	192	486	1,073	1,430	2,503	827	36	4,720	2,217
Coronado	0	1	7	1	20	14	34	134	142	276	14	2	333	57
El Cajon	3	38	201	310	181	190	371	480	836	1,316	359	15	2,598	1,282
Escondido	4	51	143	338	170	209	379	704	895	1,599	395	8	2,909	1,310
La Mesa	1	22	76	75	79	59	138	311	404	715	147	2	1,174	459
National City	0	25	128	204	59	56	115	301	434	735	274	5	1,481	746
Oceanside	3	97	163	448	195	231	426	997	1,861	2,858	452	23	4,447	1,589
San Diego	50	561	1,346	3,258	1,890	1,653	3,543	9,265	9,161	18,426	5,172	122	32,356	13,930
Sheriff – Total	18	192	494	1,835	887	886	1,773	2,609	3,623	6,232	1,704	57	12,248	6,016
Del Mar	0	1	2	4	11	6	17	24	13	37	13	0	74	37
Encinitas	2	10	15	59	65	50	115	228	194	422	68	1	691	269
Imperial Beach	0	5	16	51	35	22	57	85	110	195	79	1	403	208
Lemon Grove	2	4	54	107	44	23	67	114	251	365	120	1	719	354
Poway	2	2	12	35	35	56	91	136	218	354	45	1	541	187
San Marcos	0	17	46	130	61	102	163	281	368	649	143	3	1,148	499
Santee	0	8	29	61	38	36	74	216	443	659	73	7	904	245
Solana Beach	0	3	3	6	19	18	37	63	45	108	20	0	177	69
Vista	2	38	93	221	82	169	251	329	616	945	242	6	1,792	847
Unincorporated	10	104	224	1,161	497	404	901	1,133	1,365	2,498	901	37	5,799	3,301
4S Ranch	0	1	0	5	13	18	31	83	72	155	6	0	198	43
Alpine	1	3	8	31	23	18	41	64	68	132	43	0	259	127
Fallbrook	0	7	18	78	73	87	160	167	241	408	93	0	764	356
Lakeside	1	16	33	112	45	28	73	125	137	262	126	0	623	361
Ramona	0	6	6	43	20	20	40	36	58	94	29	0	218	124
Spring Valley	1	15	82	251	101	77	178	187	278	465	213	0	1,205	740
Valley Center	1	8	5	60	15	28	43	71	55	126	53	0	296	170
Other Sheriff	1	28	6	320	2	7	9	33	52	85	58	0	507	422
California Highway Patrol	0	0	0	44	0	1	1	5	45	50	92	0	187	137
California State University San Marcos	0	0	1	0	0	1	1	10	10	20	0	0	22	2
San Diego State University	0	7	4	9	13	25	38	108	281	389	14	5	461	72
UC San Diego	0	2	0	8	10	14	24	184	232	416	59	1	509	93
San Diego Harbor Police	0	8	20	47	3	62	65	359	226	585	5	0	730	145
California State Parks	0	0	1	14	0	1	1	27	30	57	1	0	74	17
Total	85	1,105	2,888	7,324	3,935	3,757	7,692	17,285	20,563	37,848	9,682	287	66,624	28,776

Note: The FBI Crime Index includes homicide, rape, robbery, and aggravated assault in the violent category and burglary, larceny, and motor vehicle theft in the property category. The California Crime Index includes all FBI Index crimes except larceny. "Sheriff-Total" includes the contract cities and the unincorporated area served by the Sheriff, as well as crimes reported in the Sheriff's "other" category, which has previously included the Sheriff's detention facilities, courts staffed by the Sheriff, and crimes reported to the Sheriff that occurred in a city not served by the Sheriff or a location for which jurisdiction could not be determined.

Source: SANDAG

Appendix Table 13
Number of crimes by offense by jurisdiction
San Diego region, 2020

	Homicide	Rape	Robbery	Aggravated assault	Residential burglary	Non-residential burglary	Total burglary	Larceny over \$400	Larceny \$400 and under	Total larceny	Motor vehicle theft	Arson	FBI Crime Index	California Crime Index
Carlsbad	3	24	35	162	108	148	256	636	792	1,428	157	8	2,065	637
Chula Vista	10	63	302	541	211	265	476	896	1,125	2,021	760	67	4,173	2,152
Coronado	0	3	6	11	18	14	32	98	105	203	32	0	287	84
El Cajon	5	33	113	361	133	155	288	422	781	1,203	373	41	2,376	1,173
Escondido	5	51	118	395	143	257	400	788	1,077	1,865	432	23	3,266	1,401
La Mesa	2	16	58	105	87	146	233	295	354	649	154	20	1,217	568
National City	4	19	99	229	46	93	139	351	409	760	261	7	1,511	751
Oceanside	5	73	139	501	214	211	425	885	1,451	2,336	419	48	3,898	1,562
San Diego	56	485	1,207	3,556	1,577	1,747	3,324	8,283	7,761	16,044	4,953	222	29,625	13,581
Sheriff – Total	25	186	430	1,950	694	838	1,532	2,376	2,972	5,348	1,611	107	11,082	5,734
Del Mar	0	3	0	5	11	10	21	24	16	40	10	0	79	39
Encinitas	0	10	24	99	71	72	143	237	240	477	56	3	809	332
Imperial Beach	1	8	21	65	22	11	33	79	93	172	78	4	378	206
Lemon Grove	2	8	43	94	19	32	51	89	191	280	89	3	567	287
Poway	0	4	16	33	27	57	84	109	136	245	37	5	419	174
San Marcos	0	13	40	141	50	114	164	263	383	646	161	7	1,165	519
Santee	1	10	24	132	18	39	57	135	202	337	58	6	619	282
Solana Beach	0	1	4	9	28	16	44	62	31	93	18	0	169	76
Vista	2	29	76	238	67	126	193	289	451	740	270	9	1,548	808
Unincorporated	19	100	182	1,134	381	361	742	1,089	1,229	2,318	834	70	5,329	3,011
4S Ranch	0	0	2	3	9	15	23	59	52	111	10	0	149	38
Alpine	1	8	5	58	21	24	45	73	70	143	36	0	296	153
Fallbrook	3	7	31	73	74	97	171	143	240	383	106	0	774	391
Lakeside	1	10	17	129	33	28	61	93	97	190	75	0	483	293
Ramona	1	4	8	49	11	16	27	28	48	76	25	0	190	114
Spring Valley	6	16	63	227	65	52	117	174	259	433	244	0	1,106	673
Valley Center	1	4	4	69	19	18	37	97	88	185	60	0	360	175
Other Sheriff	2	24	6	225	3	10	13	29	19	48	81	0	399	351
California Highway Patrol	0	0	0	26	1	0	1	7	24	31	121	0	179	148
California State University San Marcos	0	0	0	0	0	4	4	6	6	12	1	0	17	5
San Diego State University	0	3	3	4	20	50	70	47	93	140	12	2	232	92
UC San Diego	0	3	2	7	5	30	35	162	205	367	36	0	450	83
San Diego Harbor Police	0	8	15	57	3	75	78	212	156	368	3	5	529	161
California State Parks	0	0	0	8	0	8	8	54	36	90	0	2	106	16
Total	115	967	2,527	7,913	3,260	4,041	7,301	15,518	17,347	32,865	9,325	552	61,013	28,148

Note: The FBI Crime Index includes homicide, rape, robbery, and aggravated assault in the violent category and burglary, larceny, and motor vehicle theft in the property category. The California Crime Index includes all FBI Index crimes except larceny. "Sheriff-Total" includes the contract cities and the unincorporated area served by the Sheriff, as well as crimes reported in the Sheriff's "other" category, which has previously included the Sheriff's detention facilities, courts staffed by the Sheriff, and crimes reported to the Sheriff that occurred in a city not served by the Sheriff or a location for which jurisdiction could not be determined.

Source: SANDAG

Appendix Table 14
Number of crimes by offense by jurisdiction
San Diego region, 2021

	Homicide	Rape	Robbery	Aggravated assault	Residential burglary	Non-residential burglary	Total burglary	Larceny over \$400	Larceny \$400 and under	Total larceny	Motor vehicle theft	Arson	FBI Crime Index	California Crime Index
Carlsbad	2	31	38	179	99	159	258	736	810	1,546	186	20	2,240	694
Chula Vista	9	65	265	616	193	210	403	1,063	975	2,038	906	50	4,302	2,264
Coronado	--	--	--	--	--	--	--	--	--	--	--	--	--	--
El Cajon	6	43	121	378	103	148	251	584	620	1,204	386	26	2,389	1,185
Escondido	2	48	153	400	98	220	318	836	935	1,771	536	31	3,228	1,457
La Mesa	2	14	45	114	97	78	175	407	362	769	186	15	1,305	536
National City	3	18	89	258	48	80	128	447	393	840	314	15	1,650	810
Oceanside	6	94	169	553	218	201	419	1,174	1,394	2,568	436	39	4,245	1,677
San Diego	57	571	1,091	4,156	1,627	1,766	3,393	10,392	7,683	18,075	6,165	158	33,508	15,433
Sheriff – Total	31	161	423	2,093	687	918	1,605	3,001	2,691	5,692	1,823	91	11,828	6,136
Del Mar	0	1	2	4	11	7	18	41	24	65	5	0	95	30
Encinitas	0	16	25	94	79	67	146	404	281	685	95	1	1,061	376
Imperial Beach	3	7	18	82	20	10	30	83	70	153	87	4	380	227
Lemon Grove	2	5	38	151	26	45	71	145	159	304	105	2	676	372
Poway	0	10	25	45	22	61	83	159	129	288	49	3	500	212
San Marcos	3	19	44	141	50	103	153	295	282	577	165	2	1,102	525
Santee	0	3	31	111	26	56	82	162	227	389	70	8	686	297
Solana Beach	1	3	9	13	15	45	60	90	49	139	32	0	257	118
Vista	2	22	87	246	78	132	210	372	386	758	262	8	1,587	829
Unincorporated	20	75	144	1,206	360	392	752	1,250	1,084	2,334	953	63	5,484	3,150
4S Ranch	0	2	2	4	20	21	41	42	29	71	12	0	132	61
Alpine	0	3	2	42	20	16	36	77	59	136	48	0	267	131
Fallbrook	2	6	14	105	73	71	144	187	201	388	106	0	765	377
Lakeside	1	5	19	106	27	27	54	110	97	207	95	0	487	280
Ramona	1	7	8	51	7	15	22	50	53	103	31	0	223	120
Spring Valley	8	13	35	254	44	55	99	189	157	346	175	0	930	584
Valley Center	0	5	11	66	29	35	64	161	93	254	107	0	507	253
Other Sheriff	2	12	5	264	2	10	12	16	22	38	36	0	369	331
California Highway Patrol	0	0	0	9	0	1	1	1	19	20	100	0	130	110
California State University San Marcos	0	0	0	1	0	0	0	2	3	5	1	0	7	2
San Diego State University	0	7	6	7	15	42	57	69	116	185	15	1	277	92
UC San Diego	0	3	1	7	5	15	20	189	186	375	62	1	468	93
San Diego Harbor Police	0	13	13	111	1	65	66	273	157	430	4	6	637	207
California State Parks	--	--	--	--	--	--	--	--	--	--	--	--	--	--
Total	118	1,072	2,418	8,887	3,226	3,923	7,149	19,256	16,407	35,663	11,145	453	66,452	30,789

Note: The FBI Crime Index includes homicide, rape, robbery, and aggravated assault in the violent category and burglary, larceny, and motor vehicle theft in the property category. The 2021 numbers for Coronado and California State Parks are not shown because UCR crime data was not provided for the full calendar year. The California Crime Index includes all FBI Index crimes except larceny. "Sheriff-Total" includes the contract cities and the unincorporated area served by the Sheriff, as well as crimes reported in the Sheriff's "other" category, which has previously included the Sheriff's detention facilities, courts staffed by the Sheriff, and crimes reported to the Sheriff that occurred in a city not served by the Sheriff or a location for which jurisdiction could not be determined.

Source: SANDAG

Appendix Table 15
FBI Index Violent Crime clearance rates by jurisdiction
San Diego region, 2017, 2020, and 2021

	2017	2020	2021	Difference	
				2017-2021	2020-2021
Carlsbad	48%	59%	46%	-2%	-13%
Chula Vista	42%	40%	37%	-5%	-3%
Coronado	--	--	--	--	--
El Cajon	32%	56%	51%	19%	-5%
Escondido	44%	49%	51%	7%	2%
La Mesa	59%	48%	39%	-20%	-9%
National City	55%	46%	44%	-11%	-2%
Oceanside	37%	40%	41%	4%	1%
San Diego	46%	37%	38%	-8%	1%
Sheriff – Total	60%	59%	63%	3%	4%
Del Mar	--	--	--	--	--
Encinitas	55%	65%	48%	-7%	-17%
Imperial Beach	55%	44%	55%	0%	11%
Lemon Grove	51%	54%	54%	3%	0%
Poway	57%	64%	61%	4%	--
San Marcos	63%	55%	61%	-2%	6%
Santee	86%	63%	83%	-3%	20%
Solana Beach	--	--	--	--	--
Vista	53%	61%	58%	5%	-3%
Unincorporated	61%	59%	66%	5%	7%
4S Ranch	--	--	--	--	--
Alpine	75%	74%	115%	40%	41%
Fallbrook	54%	61%	44%	-10%	-17%
Ramona	68%	65%	78%	10%	13%
Valley Center	77%	62%	99%	22%	37%
Total	48%	45%	45%	-3%	0%

Note: FBI Index Violent Crimes include homicide, rape, robbery, and aggravated assault. The 2021 percentages for Coronado are not shown because UCR crime data were not provided for the full calendar year. "Sheriff-Total" includes the contract cities and the unincorporated area served by the San Diego County Sheriff's Department. Camp Pendleton is not included. "Unincorporated" includes 4S Ranch, Alpine, Fallbrook, Ramona, and Valley Center, as well as the unincorporated areas for which crime data are not individually shown (Campo, Julian, Lakeside, Pine Valley, Ranchita, Spring Valley, and the unincorporated areas of Encinitas, Imperial Beach, Lemon Grove, Poway, San Marcos, Santee, and Vista). Clearance rates based on reported incidents or cases cleared numbering 30 or less are not computed for this table.

Source: SANDAG

Appendix Table 16
FBI Index Property Crime clearance rates by jurisdiction
 San Diego region, 2017, 2020, and 2021

	2017	2020	2021	Difference	
				2017-2021	2020-2021
Carlsbad	10%	10%	11%	1%	1%
Chula Vista	12%	10%	6%	-6%	-4%
Coronado	16%	22%	--	--	--
El Cajon	14%	18%	7%	-7%	-11%
Escondido	20%	12%	12%	-8%	0%
La Mesa	19%	12%	8%	-11%	-4%
National City	23%	11%	7%	-16%	-4%
Oceanside	8%	8%	7%	-1%	-1%
San Diego	9%	6%	6%	-3%	0%
Sheriff – Total	20%	17%	17%	-3%	0%
Del Mar	--	--	--	--	--
Encinitas	17%	18%	11%	-6%	-7%
Imperial Beach	13%	14%	11%	-2%	-3%
Lemon Grove	33%	27%	22%	-11%	-5%
Poway	17%	14%	15%	-2%	1%
San Marcos	24%	14%	18%	-6%	4%
Santee	39%	31%	36%	-3%	5%
Solana Beach	--	--	--	--	--
Vista	16%	19%	16%	0%	-3%
Unincorporated	17%	15%	18%	1%	3%
4S Ranch	--	--	--	--	--
Alpine	22%	25%	35%	13%	10%
Fallbrook	13%	11%	16%	3%	5%
Ramona	28%	24%	--	-	-
Valley Center	22%	19%	18%	-4%	-1%
Total	13%	10%	9%	-4%	-1%

Note: FBI Index Property Crimes include larceny, burglary, and motor vehicle theft. The 2021 percentages for Coronado are not shown because UCR crime data were not provided for the full calendar year. "Sheriff-Total" includes the contract cities and the unincorporated area served by the San Diego County Sheriff's Department. Camp Pendleton is not included. "Unincorporated" includes 4S Ranch, Alpine, Fallbrook, Ramona, and Valley Center, as well as the unincorporated areas for which crime data are not individually shown (Campo, Julian, Lakeside, Pine Valley, Ranchita, Spring Valley, and the unincorporated areas of Encinitas, Imperial Beach, Lemon Grove, Poway, San Marcos, Santee, and Vista). Clearance rates based on reported incidents or cases cleared numbering 30 or less are not computed for this table.

Source: SANDAG

Appendix Table 17
Dollar value of property stolen by jurisdiction
San Diego region, 2017, 2020, and 2021

	2017	2020	2021	Change	
				2017-2021	2020-2021
Carlsbad	\$4,941,249	\$6,152,813	\$5,818,101	18%	-5%
Chula Vista	12,150,694	15,907,089	17,721,169	46%	11%
Coronado	585,785	517,143	--	--	--
El Cajon	6,190,233	6,244,864	7,437,469	20%	19%
Escondido	8,079,412	8,064,653	9,877,486	22%	22%
La Mesa	3,271,140	3,496,483	4,420,663	35%	26%
National City	3,679,771	6,878,369	5,007,895	36%	-27%
Oceanside	9,158,888	8,006,566	12,224,798	33%	53%
San Diego	76,956,941	103,003,039	129,849,722	69%	26%
Sheriff – Total	41,367,780	37,015,001	45,324,651	10%	22%
Del Mar	1,132,980	651,563	287,295	-75%	-56%
Encinitas	3,768,444	3,044,112	4,369,895	16%	44%
Imperial Beach	1,201,810	1,046,475	1,166,514	-3%	11%
Lemon Grove	1,694,807	1,558,291	1,858,035	10%	19%
Poway	1,790,226	1,188,393	1,487,721	-17%	25%
San Marcos	3,428,171	3,607,012	4,053,599	18%	12%
Santee	3,885,363	1,368,761	2,082,939	-46%	52%
Solana Beach	1,555,495	923,327	1,276,373	-18%	38%
Vista	4,913,566	3,820,727	5,386,811	10%	41%
Unincorporated	17,996,918	19,806,340	23,355,469	30%	18%
4S Ranch	785,966	1,044,116	1,423,000	81%	36%
Alpine	926,496	811,740	1,159,905	25%	43%
Fallbrook	1,759,917	2,714,869	2,700,002	53%	-1%
Ramona	958,585	362,581	752,050	-22%	107%
Valley Center	2,065,672	1,636,670	2,493,579	21%	52%
California Highway Patrol	568,474	2,967,963	3,423,080	502%	15%
California State University San Marcos	10,277	46,506	21,468	109%	-54%
San Diego State University	359,505	218,168	413,187	15%	89%
UC San Diego	659,077	509,568	464,207	-30%	-9%
San Diego Harbor Police	842,491	793,614	1,193,485	42%	50%
California State Parks	129,644	84,402	--	--	--
Total	\$168,951,361	\$199,906,241	\$243,873,046	44%	22%

Note: Dollar amounts are not adjusted for inflation and reflect the reported dollar values associated with stolen items reported by individual jurisdictions. The 2021 numbers for Coronado and California State Parks are not shown because UCR crime data were not provided for the full calendar year. "Sheriff-Total" includes the contract cities and the unincorporated area served by the San Diego County Sheriff's Department. Camp Pendleton is not included. "Unincorporated" includes 4S Ranch, Alpine, Fallbrook, Ramona, and Valley Center, as well as the unincorporated areas for which crime data are not individually shown (Campo, Julian, Lakeside, Pine Valley, Ranchita, Spring Valley, and the unincorporated areas of Encinitas, Imperial Beach, Lemon Grove, Poway, San Marcos, Santee, and Vista).

Source: SANDAG

Appendix Table 18 Dollar value of property recovered by jurisdiction

San Diego region, 2017, 2020, and 2021

	2017	2020	2021	Change	
				2017-2021	2020-2021
Carlsbad	\$953,280	\$1,894,836	\$2,152,392	126%	14%
Chula Vista	3,746,710	6,673,186	6,699,511	79%	<1%
Coronado	153,248	239,924	--	--	--
El Cajon	3,322,597	2,680,351	3,566,230	7%	33%
Escondido	3,313,667	3,773,065	5,500,933	66%	46%
La Mesa	1,258,505	1,949,055	1,537,326	22%	-21%
National City	1,880,791	4,432,320	2,549,203	36%	-42%
Oceanside	4,466,821	4,393,099	5,662,351	27%	29%
San Diego	17,416,644	31,302,535	36,810,544	111%	18%
Sheriff – Total	14,029,600	15,351,235	17,624,279	26%	15%
Del Mar	343,028	233,276	36,615	-89%	-84%
Encinitas	1,113,756	608,048	699,640	-37%	15%
Imperial Beach	616,903	448,706	517,297	-16%	15%
Lemon Grove	676,481	1,141,927	1,031,634	53%	-10%
Poway	222,795	259,168	400,182	80%	54%
San Marcos	1,236,692	1,653,536	2,057,025	66%	24%
Santee	629,307	504,096	842,674	34%	67%
Solana Beach	422,826	202,580	355,581	-16%	76%
Vista	2,128,417	1,275,688	1,673,486	-21%	31%
Unincorporated	6,639,395	9,024,210	10,010,145	51%	11%
4S Ranch	172,326	165,885	244,033	42%	47%
Alpine	269,589	230,807	562,473	109%	144%
Fallbrook	603,608	1,498,852	1,348,694	123%	-10%
Ramona	248,019	239,424	319,205	29%	33%
Valley Center	648,483	680,550	1,237,299	91%	82%
California Highway Patrol	229,160	638,192	954,482	317%	50%
California State University San Marcos	4,317	5,947	1,497	-65%	-75%
San Diego State University	89,705	61,269	96,258	7%	57%
UC San Diego	88,794	198,905	60,153	-32%	-70%
San Diego Harbor Police	119,571	86,750	95,390	-20%	10%
California State Parks	19,210	5,744	--	--	--
Total	\$51,092,620	\$73,686,413	\$83,453,530	63%	13%

Note: Dollar amounts are not adjusted for inflation and reflect the reported dollar values associated with recovered items reported by individual jurisdictions. The 2021 numbers for Coronado and California State Parks are not shown because UCR crime data were not provided for the full calendar year. "Sheriff-Total" includes the contract cities and the unincorporated area served by the San Diego County Sheriff's Department. Camp Pendleton is not included. "Unincorporated" includes 4S Ranch, Alpine, Fallbrook, Ramona, and Valley Center, as well as the unincorporated areas for which crime data are not individually shown (Campo, Julian, Lakeside, Pine Valley, Ranchita, Spring Valley, and the unincorporated areas of Encinitas, Imperial Beach, Lemon Grove, Poway, San Marcos, Santee, and Vista). Percent changes are not presented if either comparison number equals 30 or less.

Source: SANDAG

Appendix Table 19
Property recovery rate by jurisdiction
 San Diego region, 2017, 2020, and 2021

	2017	2020	2021	Change	
				2017-2021	2020-2021
Carlsbad	19%	31%	37%	18%	6%
Chula Vista	31%	42%	38%	7%	-4%
Coronado	26%	46%	--	--	--
El Cajon	54%	43%	48%	-6%	5%
Escondido	41%	47%	56%	15%	9%
La Mesa	38%	56%	35%	-3%	-21%
National City	51%	64%	51%	0%	-13%
Oceanside	49%	55%	46%	-3%	-9%
San Diego	23%	30%	28%	5%	-2%
Sheriff – Total	34%	41%	39%	5%	-2%
Del Mar	30%	36%	13%	-17%	-23%
Encinitas	30%	20%	16%	-14%	-4%
Imperial Beach	51%	43%	44%	-7%	1%
Lemon Grove	40%	73%	56%	16%	-17%
Poway	12%	22%	27%	15%	5%
San Marcos	36%	46%	51%	15%	5%
Santee	16%	37%	40%	24%	3%
Solana Beach	27%	22%	28%	1%	6%
Vista	43%	33%	31%	-12%	-2%
Unincorporated	37%	46%	43%	6%	-3%
4S Ranch	22%	16%	17%	-5%	1%
Alpine	29%	28%	48%	19%	20%
Fallbrook	34%	55%	50%	16%	-5%
Ramona	26%	66%	42%	16%	-24%
Valley Center	31%	42%	50%	19%	8%
California Highway Patrol	40%	22%	28%	-12%	6%
California State University San Marcos	42%	13%	7%	-35%	-6%
San Diego State University	25%	28%	23%	-2%	-5%
UC San Diego	13%	39%	13%	0%	-26%
San Diego Harbor Police	14%	11%	8%	-6%	-3%
California State Parks	15%	7%	--	--	--
Total	30%	37%	34%	4%	-3%

Note: "Sheriff-Total" includes the contract cities and the unincorporated area served by the San Diego County Sheriff's Department. The 2021 percentages for Coronado and California State Parks are not shown because UCR crime data were not provided for the full calendar year. Camp Pendleton is not included. "Unincorporated" includes 4S Ranch, Alpine, Fallbrook, Ramona, and Valley Center, as well as the unincorporated areas for which crime data are not individually shown (Campo, Julian, Lakeside, Pine Valley, Ranchita, Spring Valley, and the unincorporated areas of Encinitas, Imperial Beach, Lemon Grove, Poway, San Marcos, Santee, and Vista).

Source: SANDAG

Appendix Table 20
Population by jurisdiction
San Diego region, 2017, 2020, and 2021

	2017	2020	2021	Change	
				2017-2020	2020-2021
Carlsbad	112,990	114,463	N/A	1%	N/A
Chula Vista	265,673	272,202	N/A	2%	N/A
Coronado	24,262	21,381	N/A	-12%	N/A
El Cajon	103,706	104,393	N/A	1%	N/A
Escondido	151,916	153,008	N/A	1%	N/A
La Mesa	59,756	59,966	N/A	<1%	N/A
National City	61,456	62,099	N/A	1%	N/A
Oceanside	176,525	177,335	N/A	<1%	N/A
San Diego	1,405,702	1,430,483	N/A	2%	N/A
Sheriff – Total	902,560	905,052	N/A	<1%	N/A
Del Mar	4,272	4,268	N/A	<-1%	N/A
Encinitas	62,151	62,183	N/A	<1%	N/A
Imperial Beach	27,613	28,055	N/A	2%	N/A
Lemon Grove	26,408	26,526	N/A	<1%	N/A
Poway	49,325	49,338	N/A	<1%	N/A
San Marcos	93,906	97,209	N/A	4%	N/A
Santee	56,595	57,999	N/A	2%	N/A
Solana Beach	13,737	13,838	N/A	1%	N/A
Vista	101,879	102,928	N/A	1%	N/A
Unincorporated	466,674	462,708	N/A	-1%	N/A
4S Ranch	23,492	22,457	N/A	-4%	N/A
Alpine	29,206	28,632	N/A	-2%	N/A
Fallbrook	53,635	52,456	N/A	-2%	N/A
Lakeside	55,717	54,540	N/A	-2%	N/A
Ramona	35,845	34,965	N/A	-2%	N/A
Spring Valley	73,395	70,708	N/A	-4%	N/A
Valley Center	24,062	23,465	N/A	-2%	N/A
Camp Pendleton	42,344	42,967	N/A	1%	N/A
Total	3,306,890	3,343,349	N/A	1%	N/A
Occupied households	1,134,261	1,159,436	N/A	2%	N/A
Registered vehicles	2,804,716	2,820,303	2,847,372	2%	1%

Note: Population figures are based on current California Department of Finance estimates. 2021 population numbers for individuals and household are not shown because 2020 estimates were used because they were the most recent available at the time of this report. "Sheriff-Total" includes the contract cities and the unincorporated area served by the San Diego County Sheriff's Department. Camp Pendleton is not included. "Unincorporated" includes 4S Ranch, Alpine, Fallbrook, Lakeside, Ramona, Spring Valley, and Valley Center, as well as the unincorporated areas not shown (Campo, Julian, Pine Valley, Ranchita, and the unincorporated areas of Encinitas, Imperial Beach, Lemon Grove, Poway, San Marcos, Santee, and Vista).

Sources: California Department of Motor Vehicles; California Department of Finance; SANDAG Population and Housing Estimates v2020, 2019-2020