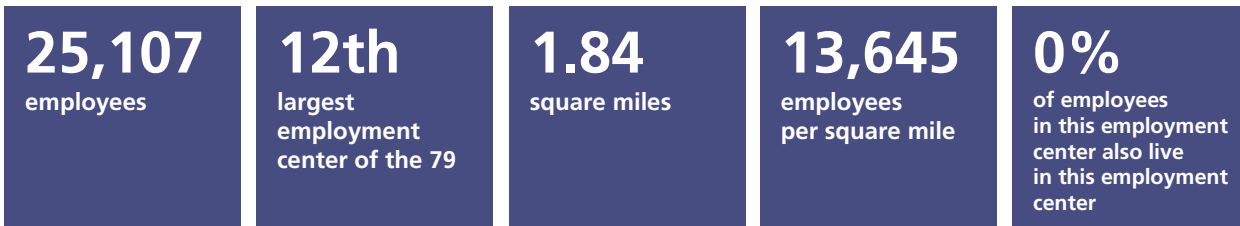


# West Bernardo employment center

## Tier 2 employment centers in the San Diego region<sup>1</sup>: An analysis of where people live and work

### Highlight 1

#### Characteristics of this employment center



Sources: SANDAG Employment Estimates, 2016; LEHD LODES OD, 7.3, 2015

### Highlight 2

#### Industries in this employment center and the region overall

	West Bernardo employment center		Region	
	Number of jobs	Percentage/ rank	Number of jobs	Percentage/ rank
<b>Health care and social assistance</b>	<b>2,111</b>	<b>8% (3)</b>	199,700	13% (1)
<b>Retail trade</b>	<b>1,542</b>	<b>6% (5)</b>	156,612	10% (2)
<b>Professional, scientific, technical</b>	<b>4,829</b>	<b>19% (2)</b>	148,766	10% (3)
<b>Food services</b>	<b>1,560</b>	<b>6% (4)</b>	131,594	9% (4)
<b>Manufacturing</b>	<b>8,006</b>	<b>32% (1)</b>	109,234	7% (5)
Administrative, support, waste services	380	2% (13)	91,519	6% (6)
Construction	472	2% (11)	83,498	5% (7)
Local government education	0	0% (20)	80,300	5% (8)
Other services	437	2% (12)	69,124	5% (9)
Finance and insurance	1,162	5% (6)	47,848	3% (10)
Wholesale trade	879	4% (8)	46,625	3% (11)
Arts, entertainment, recreation	316	1% (16)	45,639	3% (12)
Real estate, rental, leasing	950	4% (7)	38,582	3% (13)
Local government	0	0% (21)	37,429	2% (14)
Transportation and warehousing	569	2% (10)	36,183	2% (15)
Accommodation	738	3% (9)	33,094	2% (16)
Educational services	352	1% (14)	32,892	2% (17)
State government education	0	0% (22)	31,600	2% (18)
Information	352	1% (15)	26,262	2% (19)
Department of Defense	0	0% (23)	22,500	1% (20)
Management of companies/enterprises	169	1% (18)	21,500	1% (21)
Federal government	62	<1% (19)	11,454	1% (22)
Farm	0	0% (24)	9,000	1% (23)
Utilities	221	1% (17)	7,208	<1% (24)
State government	0	0% (25)	7,037	<1% (25)
Mining and logging	0	0% (26)	300	<1% (26)
<b>Total</b>	<b>25,107</b>		<b>1,525,500</b>	

Source: SANDAG Employment Estimates, 2016

<sup>1</sup> This data summary was prepared by SANDAG and is part of an evolving analysis of where people live and work in the San Diego region. Tier 2 employment centers are those between 20,000 and 40,000 employees. For data notes, sources, and qualifications, please visit: [sandag.org/employmentcenters](http://sandag.org/employmentcenters). Suggested reference: SANDAG (2019, May). *Tier 2 employment centers in the San Diego region: West Bernardo employment center*. San Diego, CA: Author.

### Highlight 3

#### Other statistics about the education level and income of employees in this employment center

**37%**

have Bachelor's degree or higher (24% region)

**\$87,312**

mean employee salary (\$55,801 region)

these jobs represent

**1.7%**

of the region's jobs

these incomes represent

**2.3%**

of regional labor income

SOURCES: SANDAG Employment Estimates, 2016; LEHD LODES OD, 7.3, 2015

### Highlight 4

#### What mode of transportation these employment center employees use to get to work during peak period?



	Drive alone	Transit	Carpool	Bike	Walk
<b>West Bernardo employment center</b>	<b>86%</b>	<b>1%</b>	<b>12%</b>	<b>&lt;1%</b>	<b>&lt;1%</b>
<b>Region</b>	80%	4%	13%	2%	1%

Source: SANDAG Activity Based Model, 2016

### Highlight 5

#### How far employees drive on average to get to this employment center during peak period and how long it takes them on average, by transportation mode

	West Bernardo employment center		Region	
	Mean number of miles	Mean length of time (Minutes)	Mean number of miles	Mean length of time (Minutes)
Vehicles	13.2	26.4	12.0	25.1
Transit	13.7	72.1	10.7	62.8
Bike	3.0	14.9	4.3	21.6
Walk	1.7	33.5	1.2	23.2

Note: Peak period includes 6:00 a.m. to 8:59 a.m. and 3:30 p.m. to 6:59 p.m.

Source: SANDAG Activity Based Model, 2016

### Highlight 6

#### What jurisdictions these employment center employees travel from

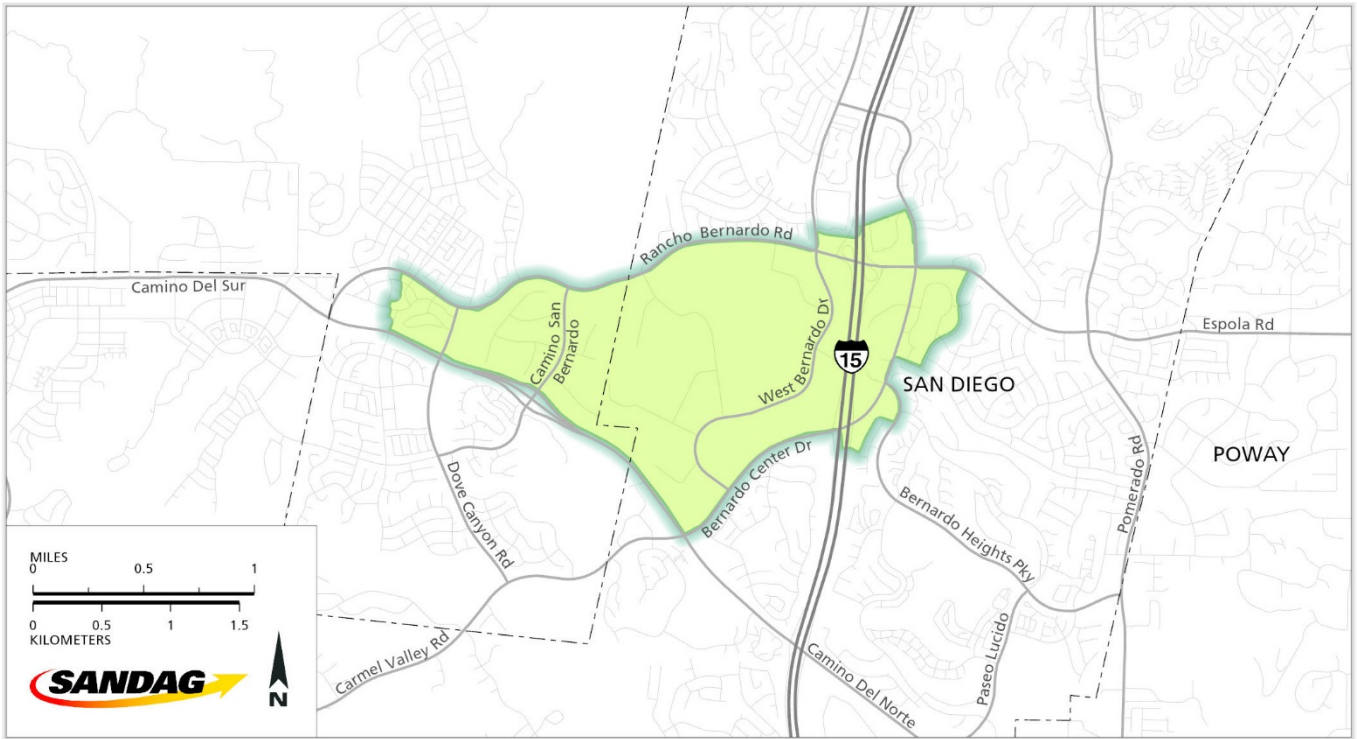
Jurisdiction	Number of workers in the employment center	Percent
San Diego	7,158	48%
Unincorporated	2,221	15%
Escondido	1,295	9%
Poway	857	6%
San Marcos	525	4%
Carlsbad	492	3%
Oceanside	448	3%
Chula Vista	421	3%
Encinitas	287	2%
Vista	260	2%
El Cajon	237	2%
Santee	217	2%
La Mesa	173	1%
Solana Beach	83	1%
Coronado	78	1%
National City	72	1%
Lemon Grove	50	<1%
Imperial Beach	42	<1%
Del Mar	22	<1%
<b>Total</b>	<b>14,938</b>	

Note: The total number of employees shown here is lower than presented elsewhere because employees who travel from outside the region or have an unknown origin location are excluded and only primary jobs are included.

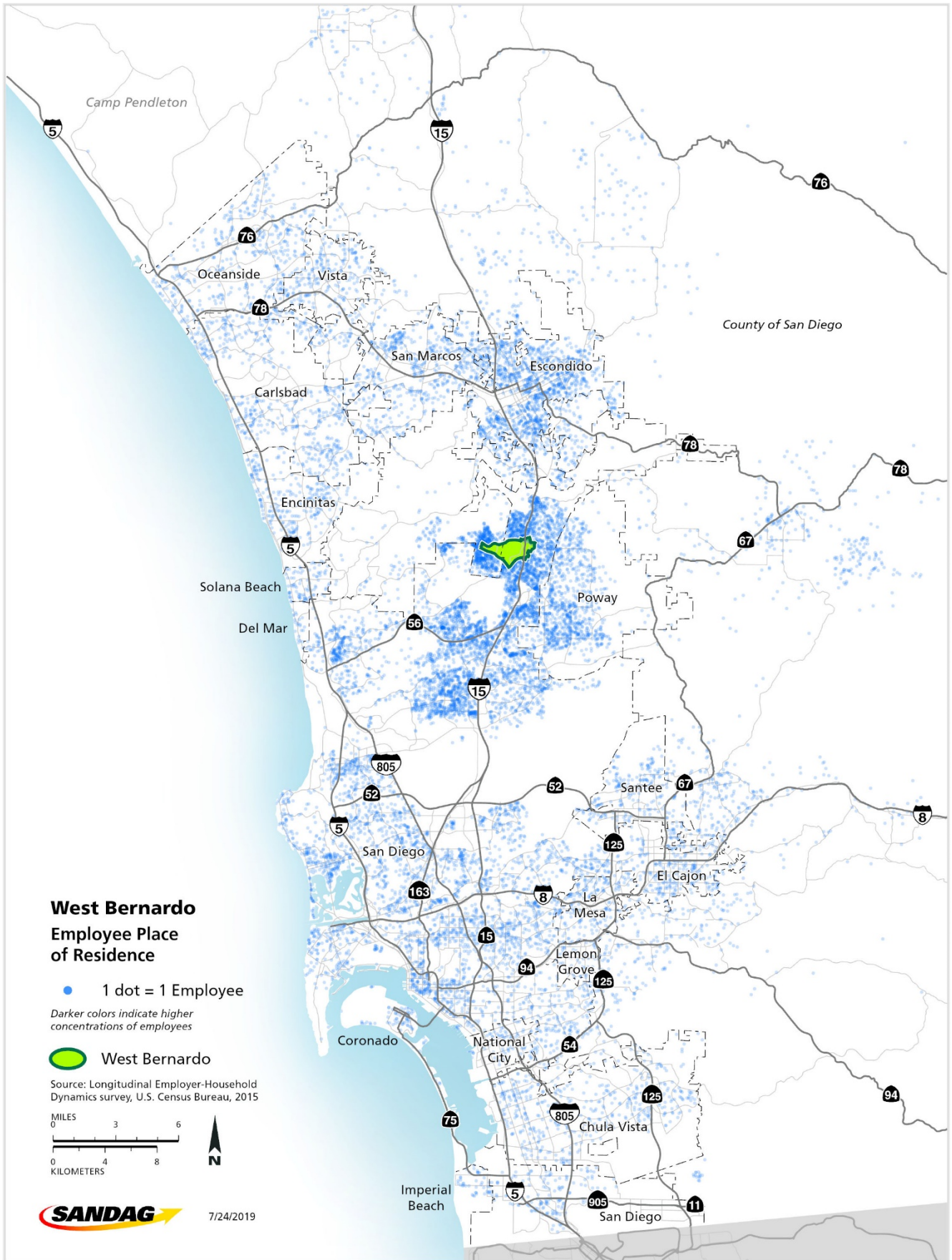
Source: SANDAG Employment Estimates, 2016; LEHD LODES OD, 7.3, 2015

Map 1

West Bernardo employment center



### Where do West Bernardo employment center employees live?



### How far employees in the West Bernardo employment center have to travel

