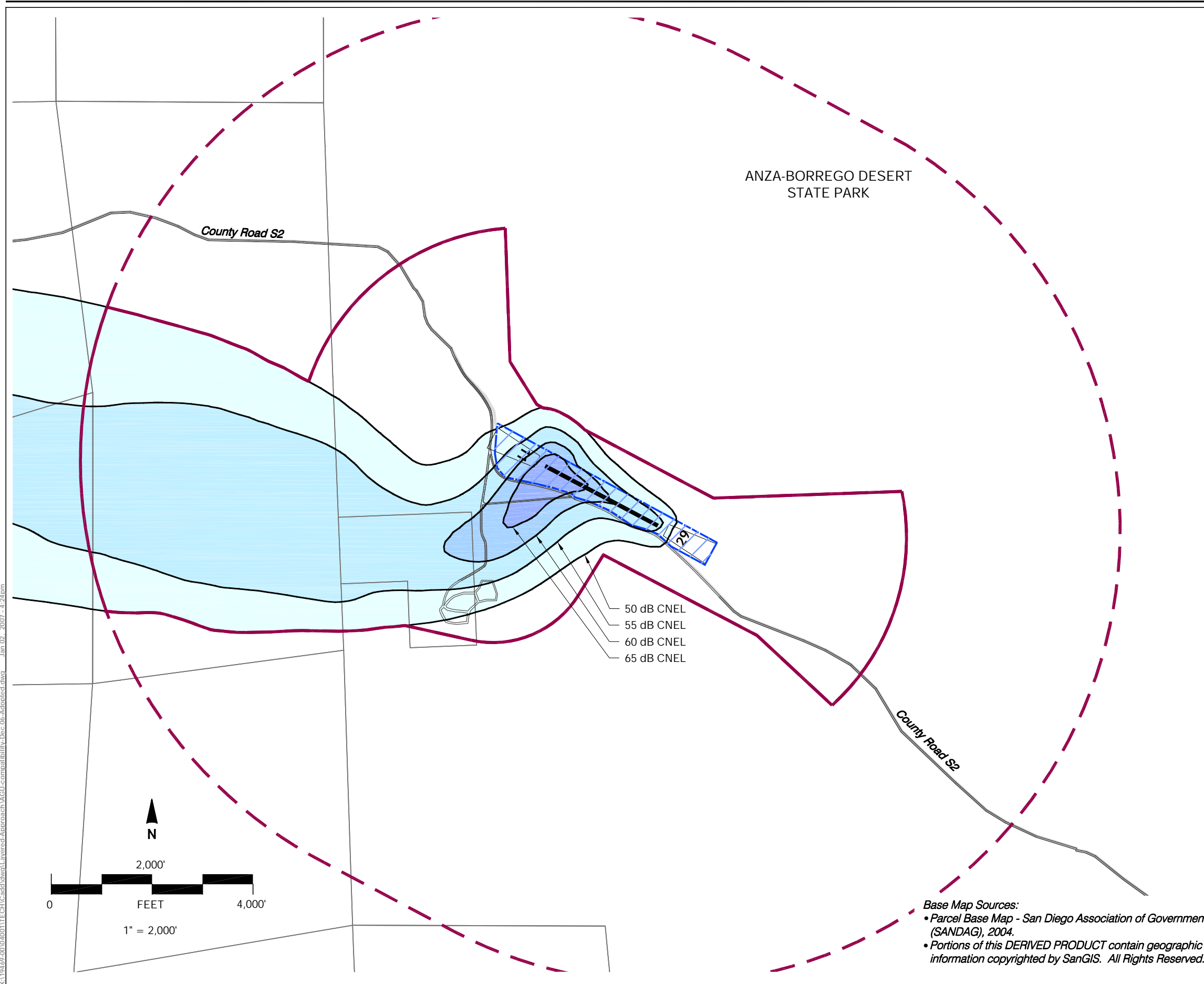


Appendix N
Noise Contour Maps



Legend

Boundary Lines

- Airport Property Line
- Parcel Line

Noise Impact Zones*

- | | | |
|--|-----------------|---|
| | 50 - 55 dB CNEL | Future Average
Annual Day
(10 Operations) |
| | 55 - 60 dB CNEL | |
| | 60 - 65 dB CNEL | |
| | 65 + dB CNEL | |

Airport Influence Area

- Review Area 1
- Review Area 2

Notes

* Source: Harris Miller Miller & Hanson, Inc. (November 2004).

See Table AGU-1 for criteria applicable within each zone.

50 dB CNEL contour continues westward, not closing within study area because of low altitudes of helicopters along flight track.

X:\19469-00\040001\TECH\Cadd\dwg\Layers\Approach\AGU-Compatibility\Dec-06-Adopted.dwg Jan 02, 2007 - 4:24pm



AIRPORT LAND USE COMMISSION
SAN DIEGO COUNTY

**Agua Caliente Airport
Land Use Compatibility Plan**

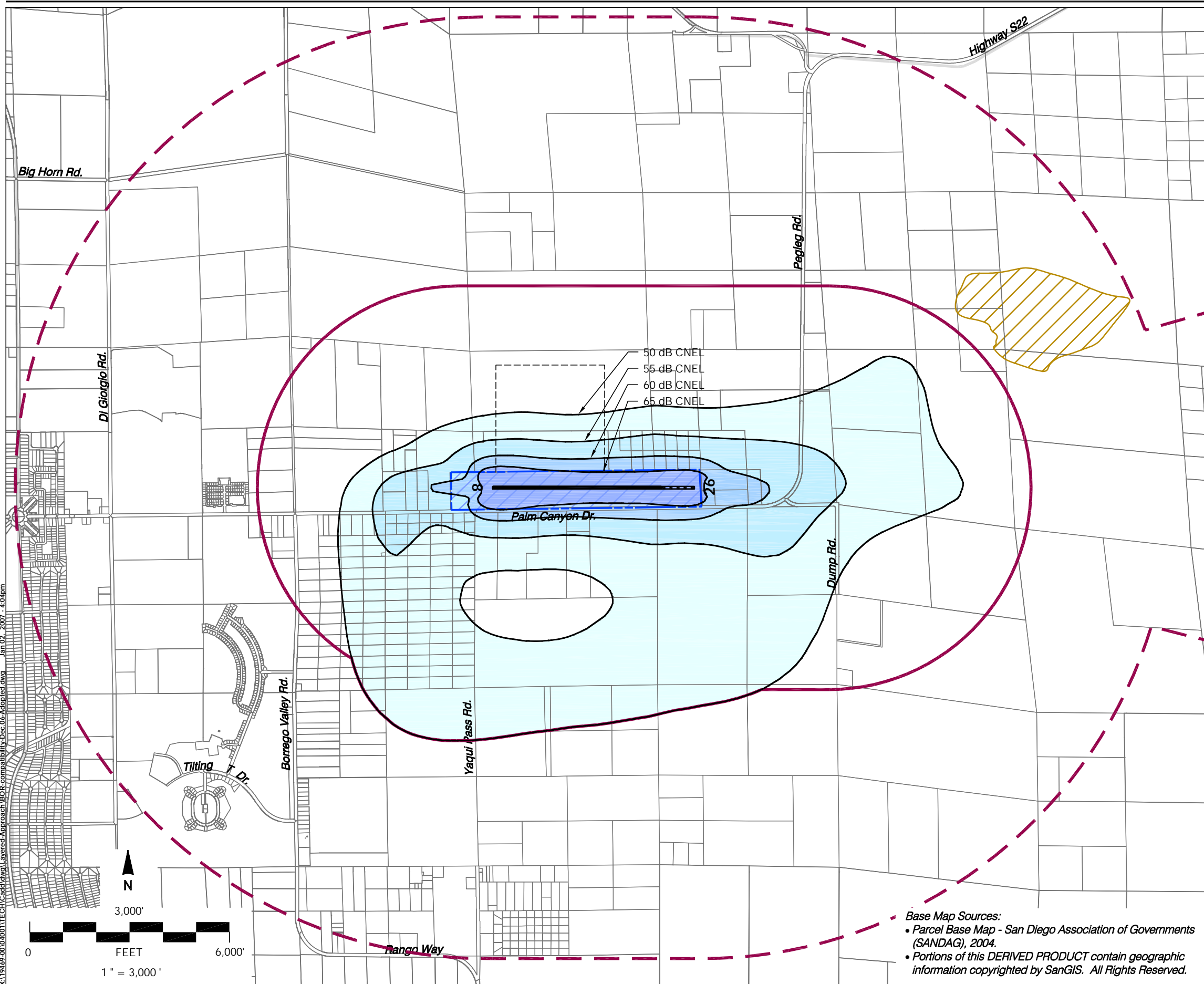
(Adopted December 2006)

Map AGU-1

**Compatibility Policy Map:
Noise**

Base Map Sources:

- Parcel Base Map - San Diego Association of Governments (SANDAG), 2004.
- Portions of this DERIVED PRODUCT contain geographic information copyrighted by SanGIS. All Rights Reserved.



Legend

- Boundary Lines**
- Airport Property Line
 - Parcel Line
- Noise Impact Zones***
- 50 - 55 dB CNEL
 - 55 - 60 dB CNEL
 - 60 - 65 dB CNEL
 - 65 + dB CNEL
- Future Average Annual Day (137 Operations)
- Airport Influence Area**
- Review Area 1
 - Review Area 2

Notes

* Source: Harris Miller Miller & Hanson, Inc. (November 2004).

See Table BOR-1 for criteria applicable within each zone.



**Borrego Valley Airport
Land Use Compatibility Plan
(Adopted December 2006)**

Map BOR-1

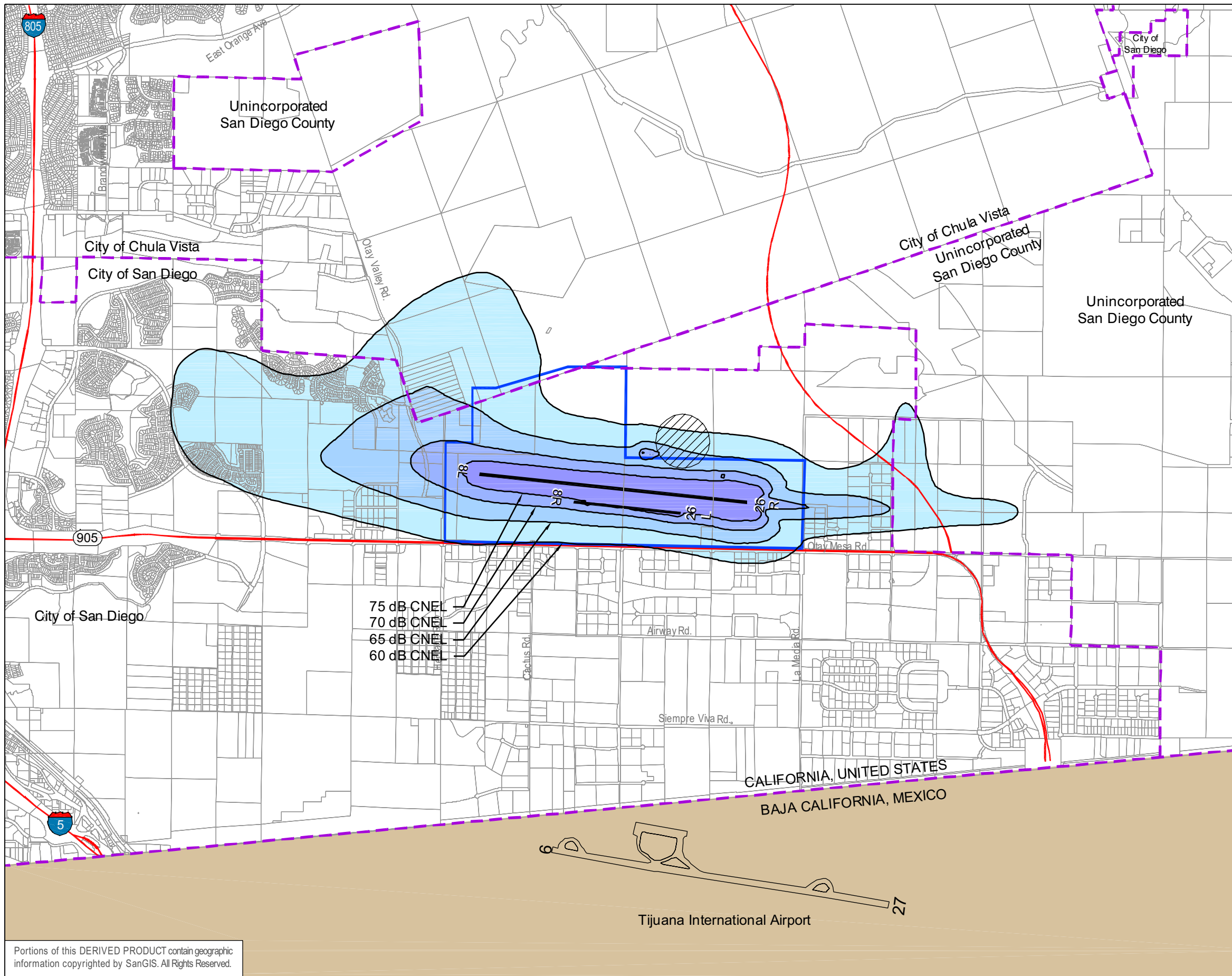
**Compatibility Policy Map:
Noise**

Base Map Sources:

- Parcel Base Map - San Diego Association of Governments (SANDAG), 2004.
- Portions of this DERIVED PRODUCT contain geographic information copyrighted by SanGIS. All Rights Reserved.



AIRPORT LAND USE COMMISSION
SAN DIEGO COUNTY



LEGEND

- Airport Property Boundary
 - Parcel Line
 - Highways
 - Municipal Boundary
 - No Overflights Below 1,500' MSL
- Noise Exposure Range:
- 60 - 65 dB CNEL
 - 65 - 70 dB CNEL
 - 70 - 75 dB CNEL
 - 75 + dB CNEL
- Future Average Annual Day (658 operations)



0 3,000 ft.

- Notes:
1. See Table III-1 for criteria applicable within each noise exposure area.
 2. CNEL = Community Noise Equivalent Level
 3. MSL = Mean Sea Level

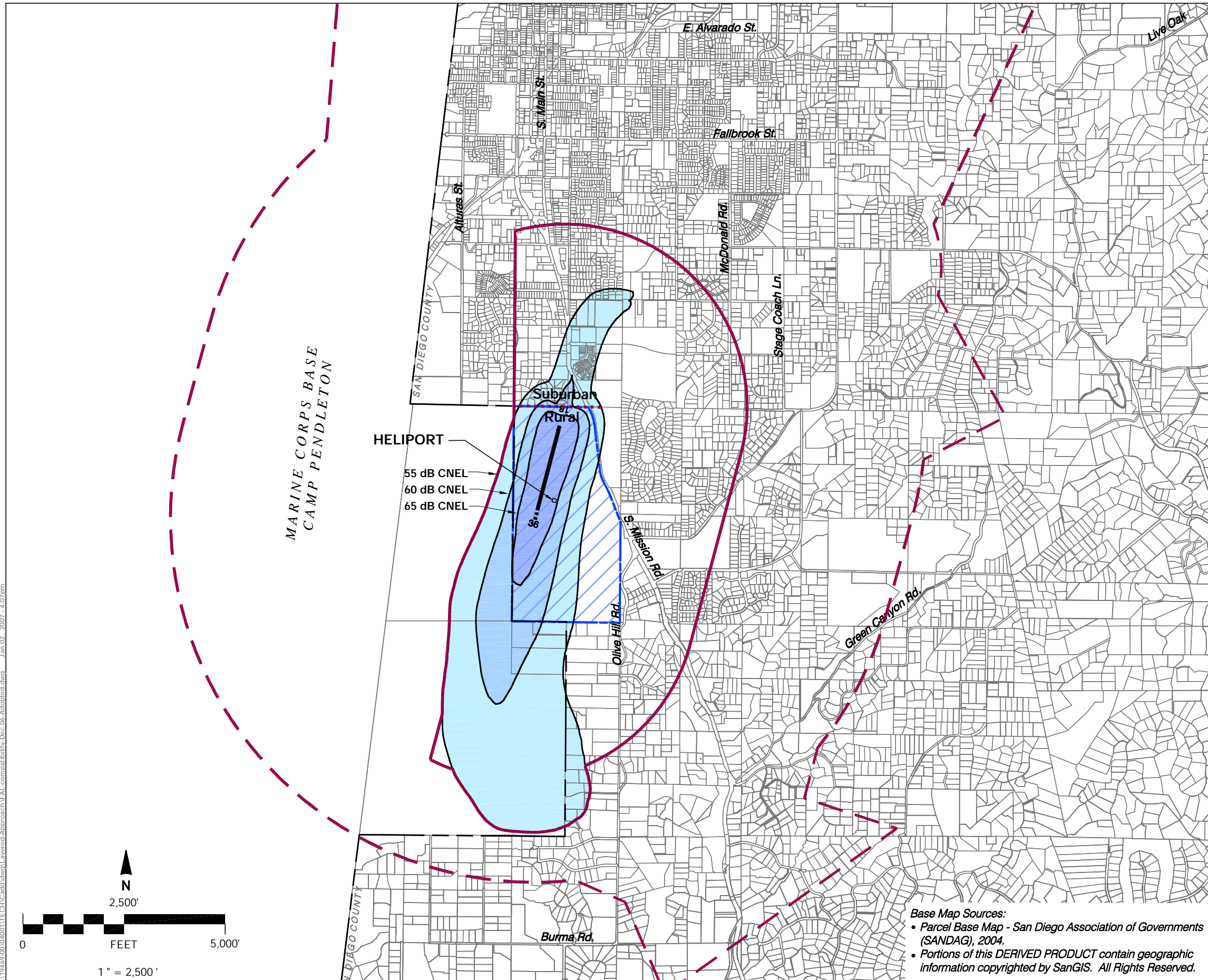
Sources: Parcels - San Diego Geographic Information Source (SanGIS), 2008; Noise Contours - Harris, Miller, Miller & Hanson, January 2007.

Prepared by: Ricondo & Associates, Inc., October 2009.

Exhibit III-1

Compatibility Policy Map: Noise

Portions of this DERIVED PRODUCT contain geographic information copyrighted by SanGIS. All Rights Reserved.



Legend

Boundary Lines

- Airport Property Line
- Parcel Line
- MCB Camp Pendleton

Noise Impact Zones*

- 55 - 60 dB CNEL Future Average
- 60 - 65 dB CNEL Annual Day
- 65 + dB CNEL (142 Operations)

Airport Influence Area

- Review Area 1
- Review Area 2

Notes

* Source: Harris Miller Miller & Hanson, Inc. (November 2004).

See Table FAL-1 for criteria applicable within each zone.

Suburban criteria apply to zones at the North end of the runway; rural criteria apply to the remainder of the Airport Influence Area.

Mapped noise contours are a blending of two sets of future noise contours reflecting:
 1) Future aircraft activity on existing runway alignment
 2) Future aircraft activity on future runway alignment



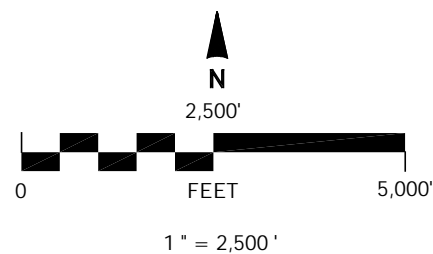
AIRPORT LAND USE COMMISSION
SAN DIEGO COUNTY

**Fallbrook Community Airpark
Land Use Compatibility Plan**

(Adopted December 2006)

Map FAL-1

**Compatibility Policy Map:
Noise**



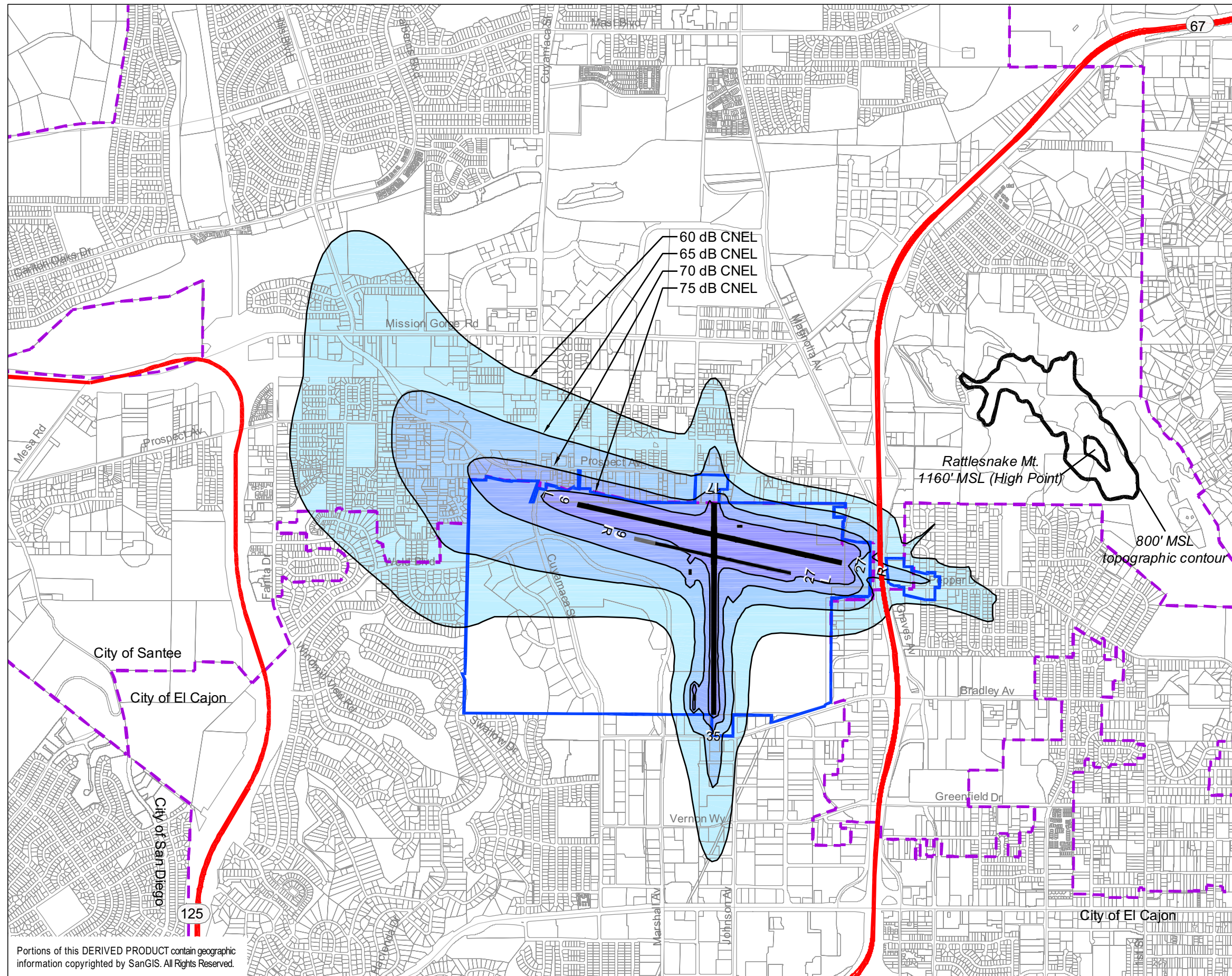
Base Map Sources:

- Parcel Base Map - San Diego Association of Governments (SANDAG), 2004.
- Portions of this DERIVED PRODUCT contain geographic information copyrighted by SanGIS. All Rights Reserved.

X:\19469-00\040001\TECH\Cadd\dwg\Layers\Approach\FAL_compat\blivity\Dec-06-Adopted.dwg - Jan 02, 2007 - 4:07 pm



AIRPORT LAND USE COMMISSION
SAN DIEGO COUNTY



LEGEND

- Airport Property Boundary
- Parcel Line
- Highways
- Municipal Boundary
- Future Runway 9R/27L extension

Noise Exposure Range

- 60 - 65 dB CNEL
- 65 - 70 dB CNEL
- 70 - 75 dB CNEL
- 75 + dB CNEL

Existing and Future Average
Annual Day (776 and 973
operations respectively)



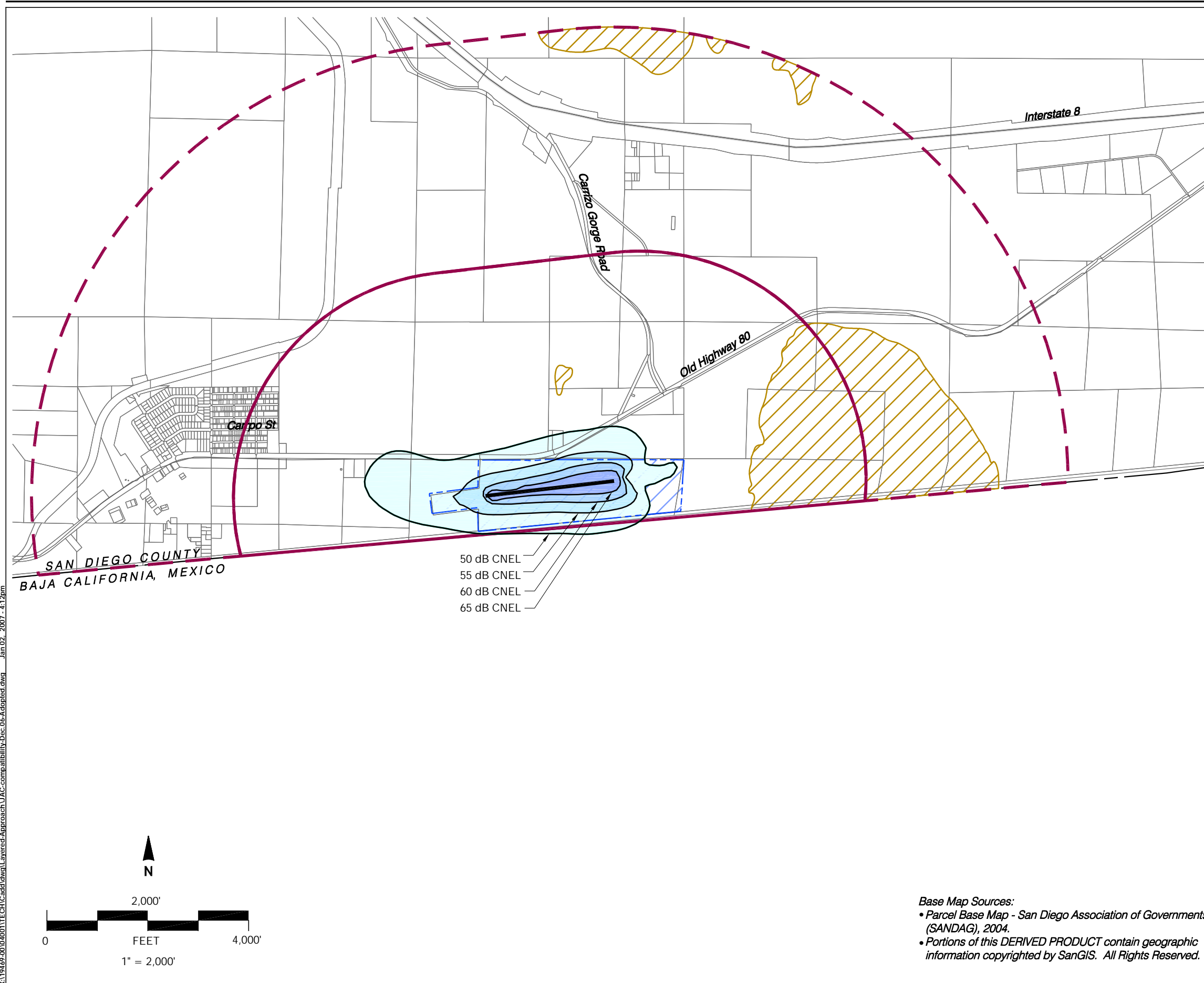
- Notes:
1. See Table III-1 for criteria applicable within each noise exposure range.
 2. Airport elevation is 387 feet above mean sea level (MSL).
 3. The depicted contours are a combination of existing and future contours and represent the highest noise level of either scenario.
 4. CNEL = Community Noise Equivalent Level.
 5. MSL = Mean Sea Level.

Sources: Parcels - San Diego Geographic Information System (SanGIS), 2008;
Noise Contours - Harris, Miller, Miller & Hanson, April 2007.

Prepared by: Ricondo & Associates, Inc., October 2009.

Exhibit III-1
Compatibility Policy Map: Noise

Portions of this DERIVED PRODUCT contain geographic information copyrighted by SanGIS. All Rights Reserved.



Legend

Boundary Lines

- Airport Property Line
- Parcel Line

Noise Impact Zones*

- 50 - 55 dB CNEL Future Average
- 55 - 60 dB CNEL Annual Day
- 60 - 65 dB CNEL (9 Operations)
- 65 + dB CNEL

Airport Influence Area

- Review Area 1
- Review Area 2

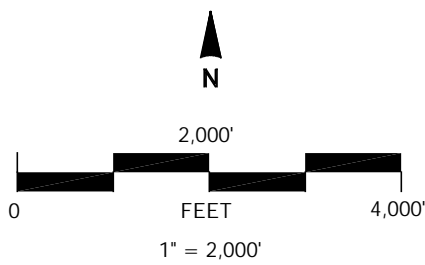
Notes

* Source: Harris Miller Miller & Hanson, Inc. (November 2004).

See Table JAC-1 for criteria applicable within each zone.

50 dB CNEL
55 dB CNEL
60 dB CNEL
65 dB CNEL

X:\19469-00\04001\TECH\Cadd\dwg\Layers\Approach\JAC-compatibility\Des-06-A\adopted.dwg Jan 02, 2007 - 4:12pm



Base Map Sources:

- Parcel Base Map - San Diego Association of Governments (SANDAG), 2004.
- Portions of this DERIVED PRODUCT contain geographic information copyrighted by SanGIS. All Rights Reserved.

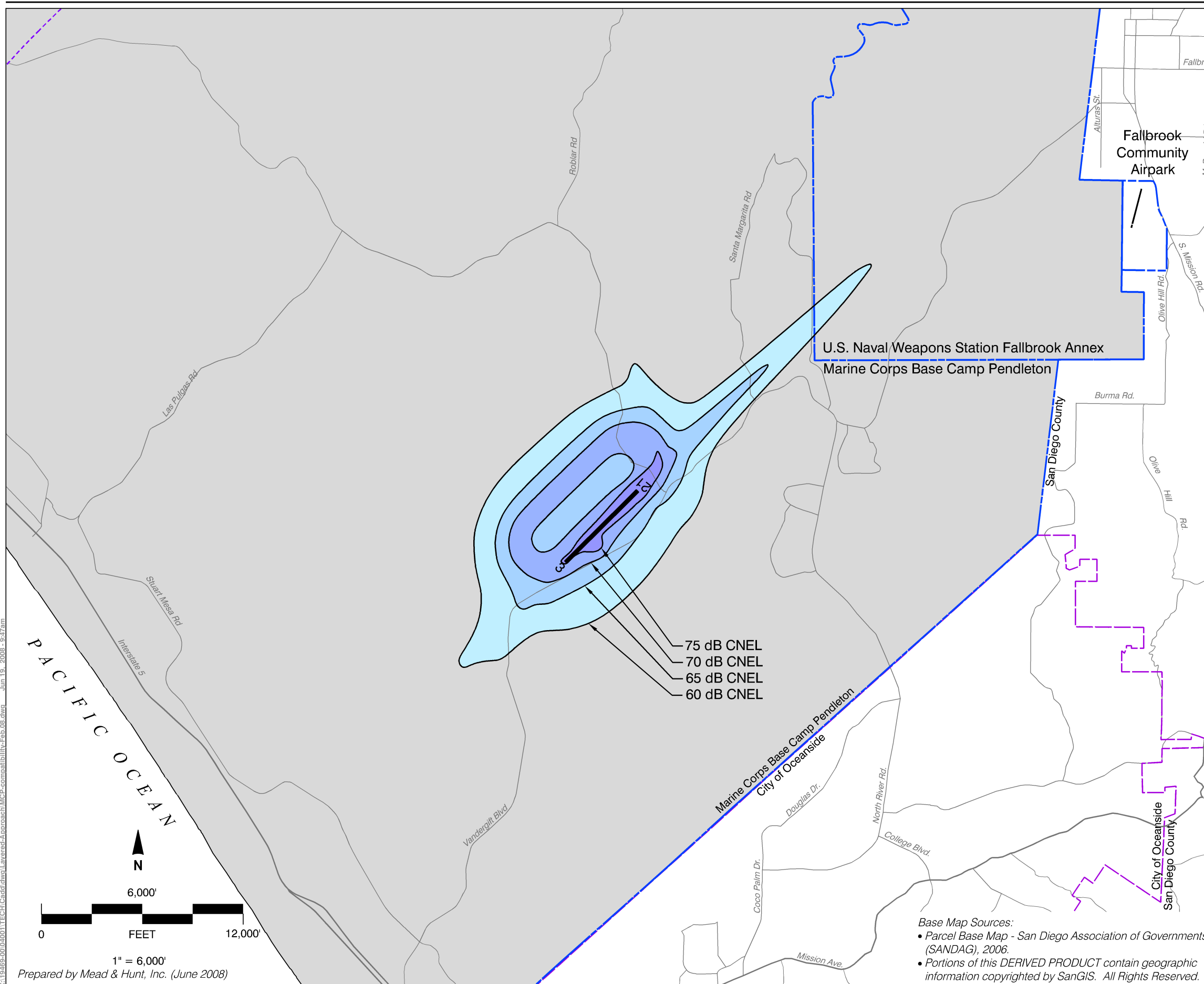


AIRPORT LAND USE COMMISSION
SAN DIEGO COUNTY

**Jacumba Airport
Land Use Compatibility Plan
(Adopted December 2006)**

Map JAC-1

**Compatibility Policy Map:
Noise**



Legend

Boundary Lines

- Airport Property Line
- Roads
- City Limits

Noise Exposure Contours¹

- 60 - 65 dB CNEL
 - 65 - 70 dB CNEL
 - 70 - 75 dB CNEL
 - 75 + dB CNEL
- Future Average²
Annual Day
(483 Operations)

Notes

1. See Table MCP-1 for criteria applicable within each noise exposure contour.
2. Noise Contour source: MCAS Camp Pendleton AICUZ Update (December 1995).

75 dB CNEL
70 dB CNEL
65 dB CNEL
60 dB CNEL



AIRPORT LAND USE COMMISSION
SAN DIEGO COUNTY

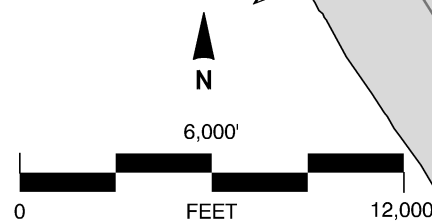
**MCAS Camp Pendleton
Airport Land Use Compatibility Plan
(Adopted June 2008)**

Map MCP-1

**Compatibility Policy Map:
Noise**

Base Map Sources:

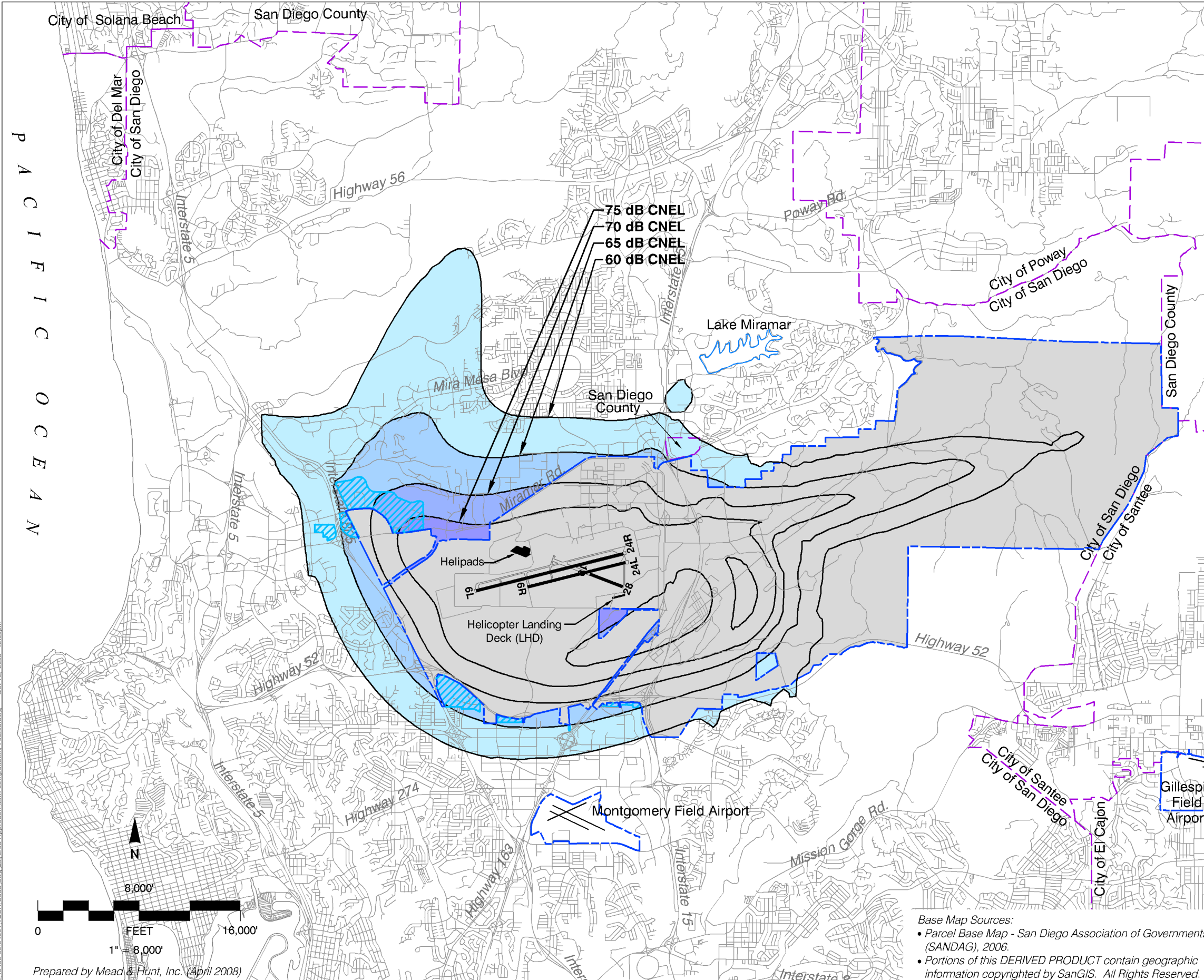
- Parcel Base Map - San Diego Association of Governments (SANDAG), 2006.
- Portions of this DERIVED PRODUCT contain geographic information copyrighted by SanGIS. All Rights Reserved.



1" = 6,000'

Prepared by Mead & Hunt, Inc. (June 2008)

X:\19469-00\04001\TECH\Cadd\dwg\Layered-A\Approach\MCP-compatibility-Feb.08.dwg Jun 19, 2008 - 9:47am



Legend

- Boundary Lines**
- Airport Property
 - Restrictive Use Easement
 - Roads
 - City Limits

- Noise Exposure Contours¹**
- | | | |
|--|-----------------|-----------------------------|
| | 60 - 65 dB CNEL | Future Average ² |
| | 65 - 70 dB CNEL | Annual Day |
| | 70 - 75 dB CNEL | (308 Operations) |
| | 75 + dB CNEL | |

Notes

1. See Table MIR-1 for criteria applicable within each noise exposure contour.
2. Noise Contour source: MCAS Miramar AICUZ (March 2005).



AIRPORT LAND USE COMMISSION
SAN DIEGO COUNTY

MCAS Miramar
Airport Land Use Compatibility Plan
(Adopted October 2008)

Map MIR-1

Compatibility Policy Map:
Noise

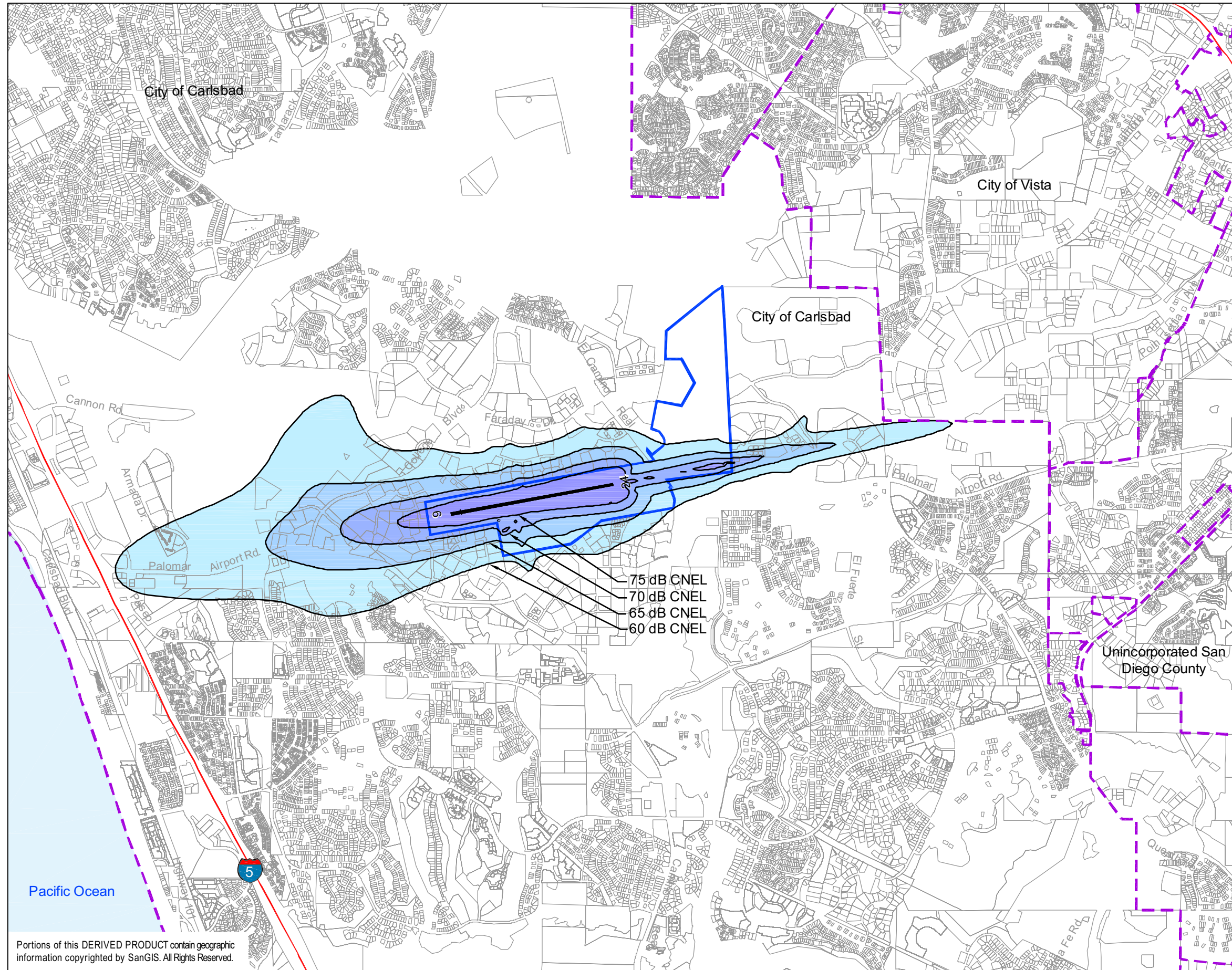
Base Map Sources:
 • Parcel Base Map - San Diego Association of Governments (SANDAG), 2006.
 • Portions of this DERIVED PRODUCT contain geographic information copyrighted by SanGIS. All Rights Reserved.

X:\19469-00\040011\TECH\Draw\Layered\Approach\MML-compatibility-Feb.08.dwg Oct. 10, 2008 - 12:00pm

P A C I F I C O C E A N



AIRPORT LAND USE COMMISSION
SAN DIEGO COUNTY



LEGEND

- Airport Property Boundary
- Parcel Line
- Highways
- Municipal Boundary

Noise Exposure Range

- 60 - 65 dB CNEL
- 65 - 70 dB CNEL
- 70 - 75 dB CNEL
- 75 + dB CNEL

Future Average
Annual Day
(792 Operations)

75 dB CNEL
70 dB CNEL
65 dB CNEL
60 dB CNEL



Notes: 1. See Table III-1 for criteria applicable within each noise exposure range.
2. CNEL = Community Noise Equivalent Level.

Sources: Parcels - San Diego Geographic Information Source (SanGIS), 2008;
Noise Contours - Harris, Miller, Miller & Hanson, December 2006.

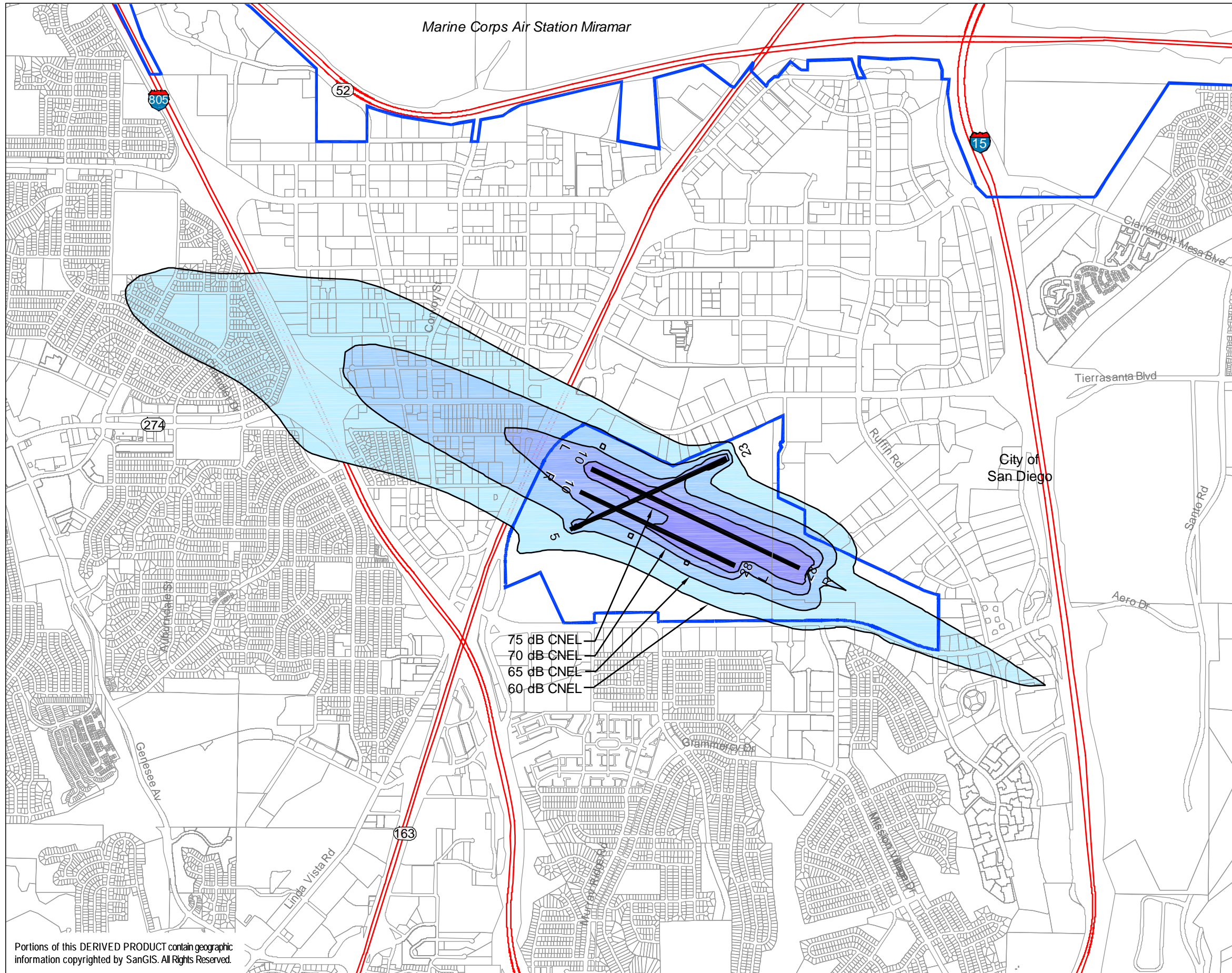
Prepared by: Ricondo & Associates, Inc., October 2009.

Exhibit III-1
Compatibility Policy Map: Noise

Portions of this DERIVED PRODUCT contain geographic information copyrighted by SanGIS. All Rights Reserved.



AIRPORT LAND USE COMMISSION
SAN DIEGO COUNTY



LEGEND

- Airport Property Boundary
- Parcel Line
- Highways

Noise Exposure Range

- 60 - 65 dB CNEL
- 65 - 70 dB CNEL
- 70 - 75 dB CNEL
- 75 + dB CNEL

Future Average
Annual Day
(1,014 Operations)

75 dB CNEL
70 dB CNEL
65 dB CNEL
60 dB CNEL



0 2,000 ft.

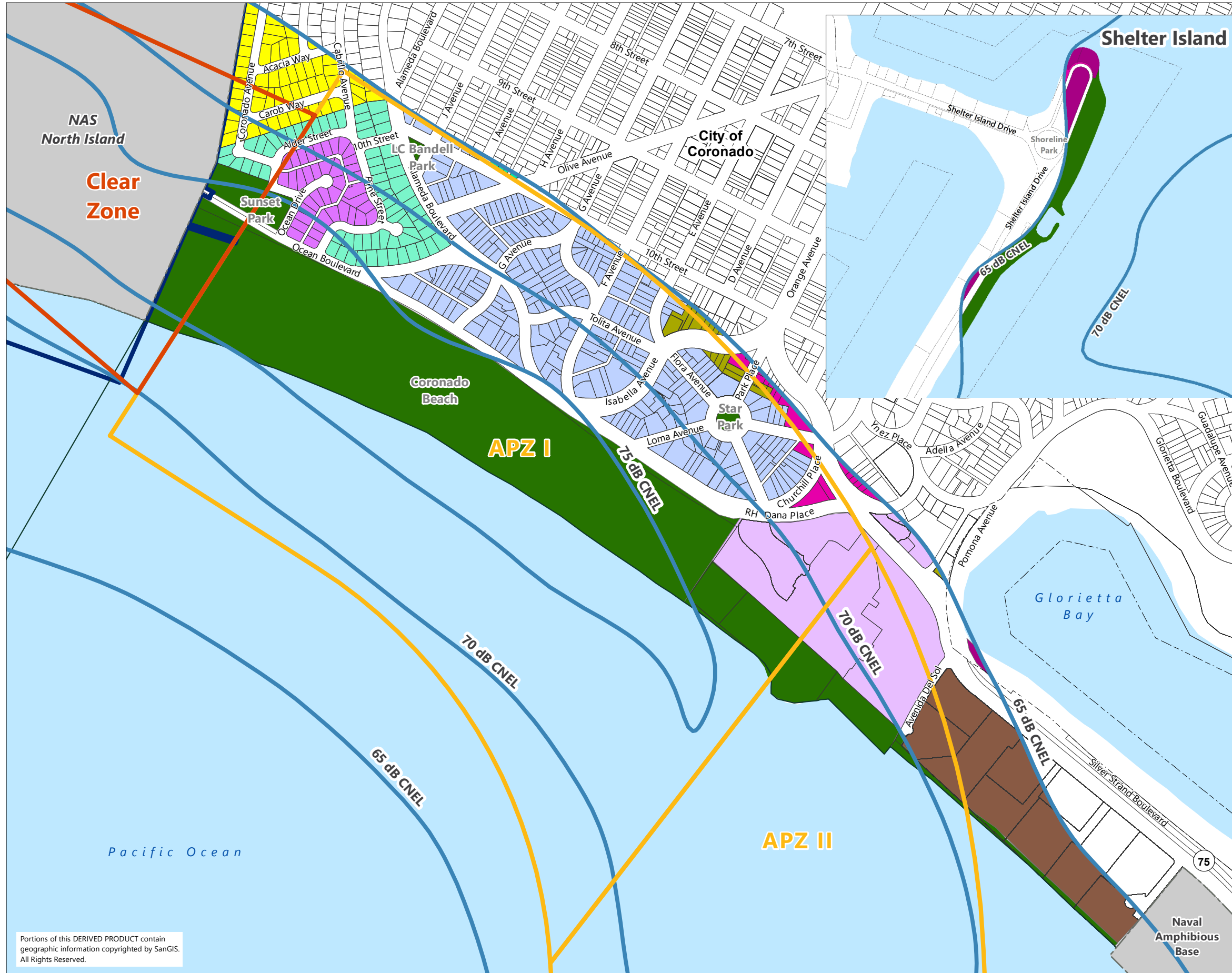
- Notes: 1. See Table III-1 for criteria applicable within each noise exposure range.
2. CNEL = Community Noise Equivalent Level.

Sources: Parcels - San Diego Geographic Information Source (SanGIS), 2008;
Noise Contours - City of San Diego, *Montgomery Field Airport Master Plan Update*, August 2004.

Prepared by: Ricondo & Associates, Inc., October 2009.

Exhibit III-1
Compatibility Policy Map: Noise

Portions of this DERIVED PRODUCT contain geographic information copyrighted by SanGIS. All Rights Reserved.



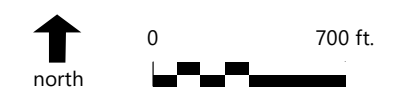
**AIRPORT
LAND USE
COMMISSION**

LEGEND

- Naval Air Station Property Boundary
- Federal Lands
- San Diego Unified Port District
- Municipal Boundaries
- Water
- Clear Zone Boundary
- Accident Potential Zone (APZ) I & II Boundaries
- Prospective Noise Contours

Existing Zoning and Minimum Residential Lot Size or Maximum Density

- R-1A(CC-1) - Single-Family Residential (7,500 sq ft)
- R-1A(CC-2) - Single-Family Residential (6,600 sq ft)
- R-1A(CC-3) - Single-Family Residential (6,000 sq ft)
- R-1A - Single-Family Residential (5,500 sq ft)
- R-1A(E) - Single-Family Residential (5,250 sq ft)
- R-1B - Single-Family Residential (3,500 sq ft)
- R-3 - Multiple-Family Residential (28 du/ac)
- R-5 - Multiple-Family Residential (47 du/ac)
- C - Commercial
- C-R - Commercial Recreation
- H-M - Hotel-Motel
- OS - Open Space
- MZ - Military Zone

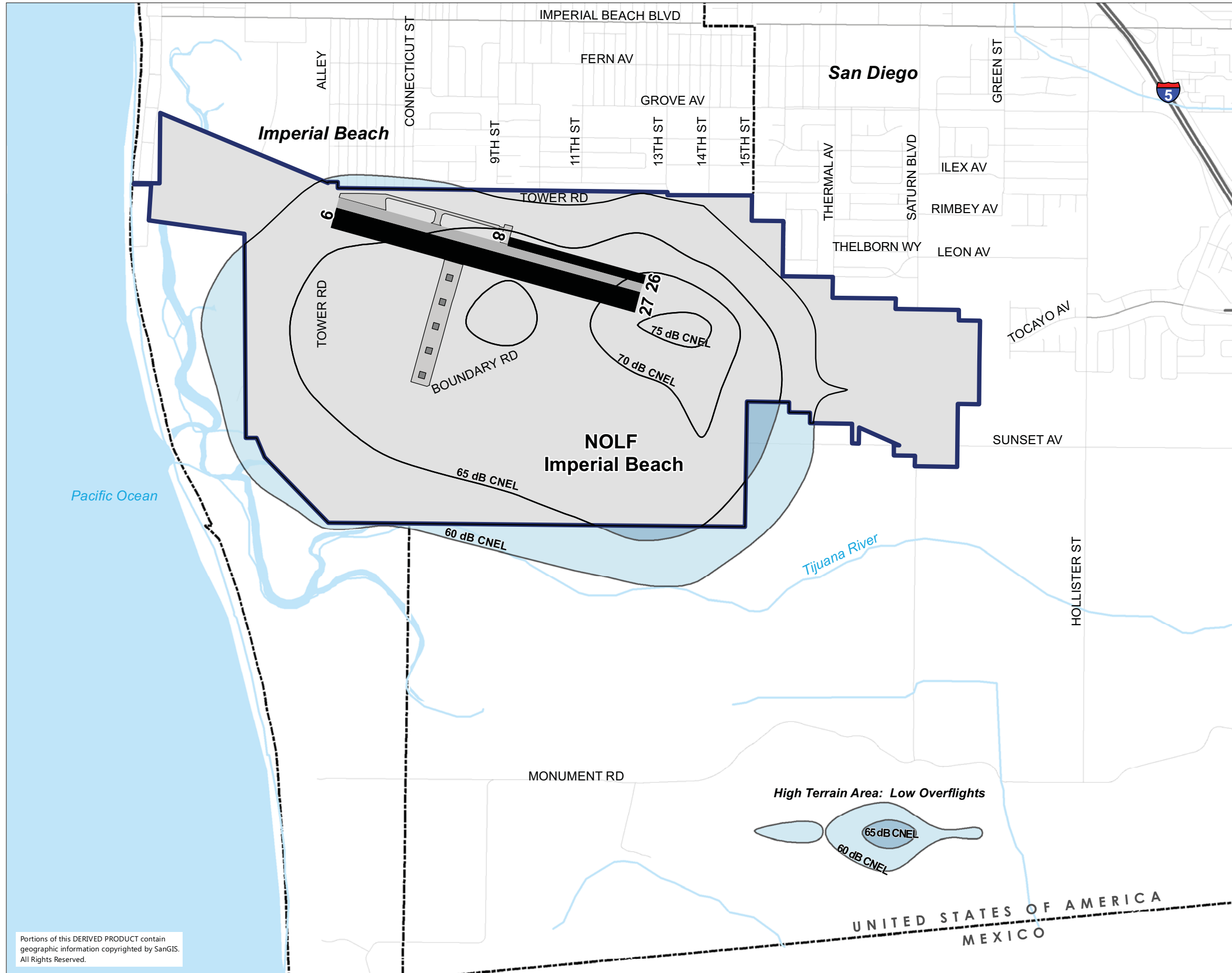


Sources: SanGIS, County of San Diego, 2019 (roads); California Department of Water Resources, 2019 (federal lands); Unified Port of San Diego, 2015 (port district boundary); County Assessor, SanGIS, San Diego Local Agency Formation Commission, 2019 (municipal boundaries); SanGIS, County of San Diego, 2015 (hydrology); The Onyx Group, *Air Installation Compatible Use Zones (AICUZ) Update for Naval Air Station North Island and Naval Outlying Landing Field Imperial Beach, California*, Naval Facilities Engineering Command Southwest, 2011, Figure 2-2 on page 2-3 (airport property line), Figure 3-1 on page 3-2 (airfield and runways), Figure 4-8 on page 4-12 (prospective noise contours), Figure 5-3 on page 5-7 (safety zones); City of Coronado, Community Development Department, 2004, <https://www.coronado.ca.us/cms/one.aspx?pageId=1619276>, accessed June 28, 2019, (zoning).

Prepared By: Ricondo & Associates, Inc., September 2019.

Portions of this DERIVED PRODUCT contain geographic information copyrighted by SanGIS. All Rights Reserved.

**Exhibit 4
Safety Zones
and Noise Contours**



LEGEND

- Major Roads
- Highways
- - - Municipal Boundaries
- ▭ Airport Property Boundary
- Water

Forecast Noise Exposure Ranges:

- 60 - 65 dB CNEL
- 65 - 70 dB CNEL
- 70 - 75 dB CNEL
- 75 + dB CNEL



Note: Airfield elevation is 24 feet above mean sea level (MSL)

Sources: San Diego Geographic Information Source (SanGIS), 2008 and 2011 (municipal boundaries, roads, rivers and highways); Naval Facilities Engineering Command, Air Installation Compatible Use Zones (AICUZ) Update for Naval Air Station North Island and Naval Outlying Field Imperial Beach, California, 2011, (airport property boundary, runways, airfield, noise contours).

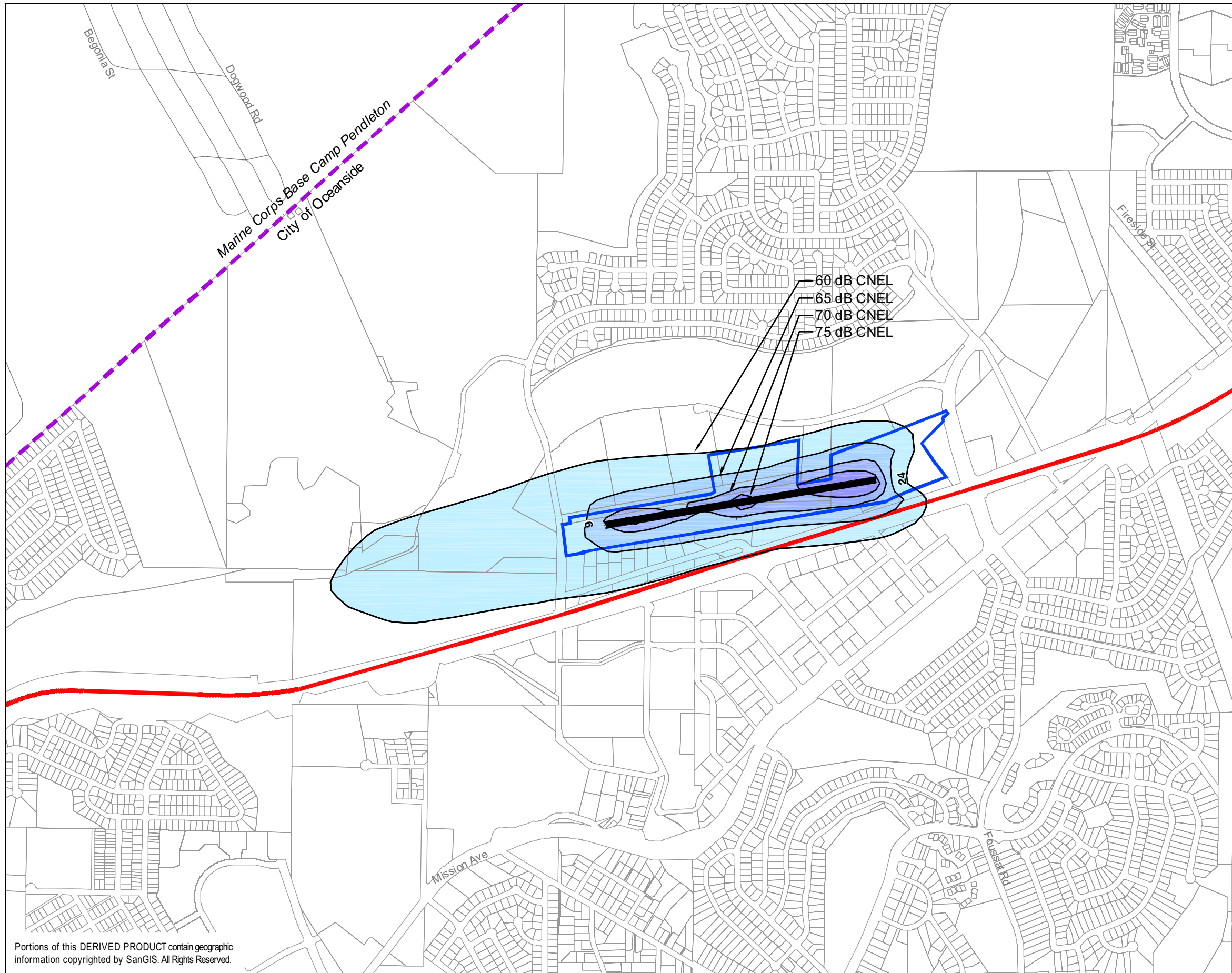
Prepared by: Ricondo & Associates, Inc., October 2015.

Portions of this DERIVED PRODUCT contain geographic information copyrighted by SanGIS. All Rights Reserved.

Exhibit 2-1
Noise Contour Map



AIRPORT LAND USE COMMISSION
SAN DIEGO COUNTY



LEGEND

- Airport Property Boundary
- Parcel Line
- Roads (on Marine Corps Base Camp Pendleton)
- Highways
- Municipal Boundary

Noise Exposure Range

- 60 - 65 dB CNEL
 - 65 - 70 dB CNEL
 - 70 - 75 dB CNEL
 - 75 + dB CNEL
- Future Average
Annual Day
(115 Operations)



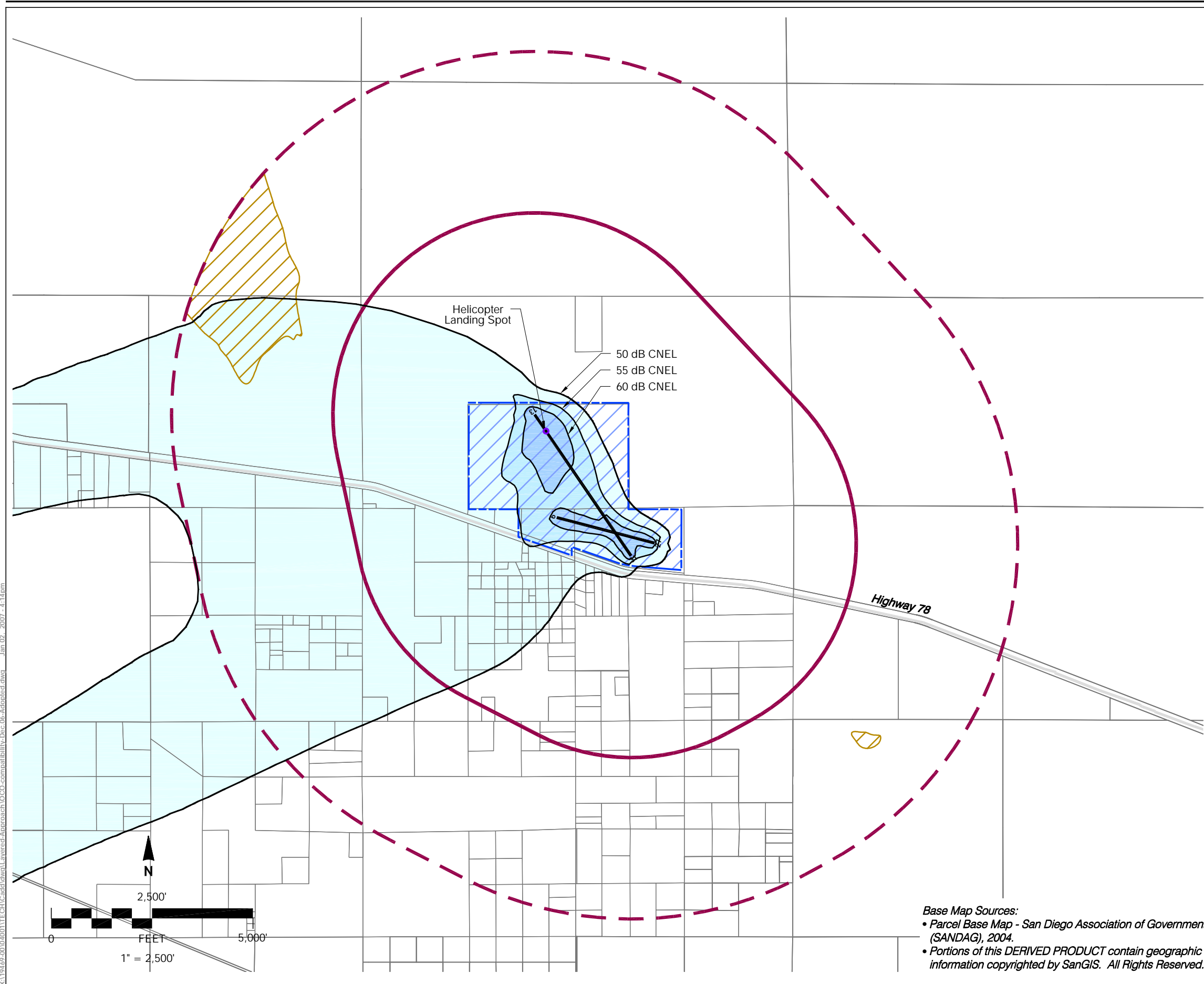
Notes: 1. See Table III-1 for criteria applicable within each noise exposure range.
2. CNEL = Community Noise Equivalent Level.

Sources: Parcels - San Diego Geographic Information Source (SanGIS), 2008;
Noise Contours - Harris, Miller, Miller & Hanson, April 2008.

Prepared by: Ricondo & Associates, Inc., October 2009.

Exhibit III-1
Compatibility Policy Map: Noise

Portions of this DERIVED PRODUCT contain geographic information copyrighted by SanGIS. All Rights Reserved.



Legend

Boundary Lines

- Airport Property Line
- Parcel Line

Noise Impact Zones

- | | | |
|--|-----------------|----------------|
| | 50 - 55 dB CNEL | Future Average |
| | 55 - 60 dB CNEL | Annual Day |
| | 60 - 65 dB CNEL | (8 Operations) |

Airport Influence Area

- Review Area 1
- Review Area 2

Notes

* Source: Harris Miller Miller & Hanson, Inc. (November 2004).

See Table OCO-1 for criteria applicable within each zone.



AIRPORT LAND USE COMMISSION
SAN DIEGO COUNTY

**Ocotillo Airport
Land Use Compatibility Plan
(Adopted December 2006)**

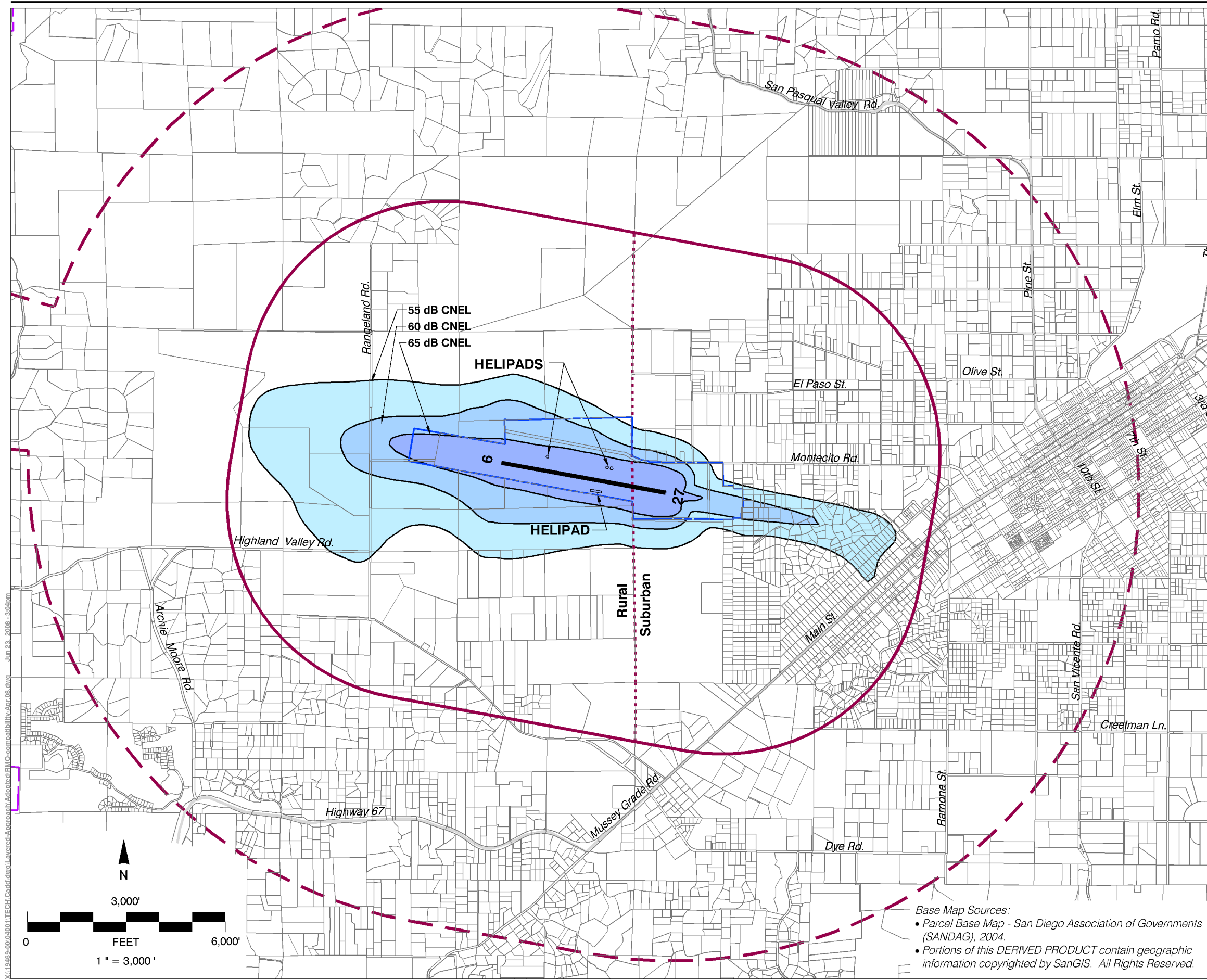
Map OCO-1

**Compatibility Policy Map:
Noise**

Base Map Sources:

- Parcel Base Map - San Diego Association of Governments (SANDAG), 2004.
- Portions of this DERIVED PRODUCT contain geographic information copyrighted by SanGIS. All Rights Reserved.

X:\19469-00\040001\TECH\Cadd\dwg\Layers\Approach\OCOC-compatibility\Dec-06-Adopted.dwg Jan 02, 2007 - 4:14pm



Legend

Boundary Lines

- Airport Property Line
- Parcel Line

Noise Impact Zones*

- 55 - 60 dB CNEL Future Average
- 60 - 65 dB CNEL Annual Day
- 65 + dB CNEL (540 Operations)

Airport Influence Area

- Review Area 1
- Review Area 2

Notes

* Source: Harris Miller Miller & Hanson, Inc. (November 2004).

- See Table RMO-1 for criteria applicable within each zone.
- Suburban criteria apply to zones at the East end of the runway; rural criteria apply to the remainder of the Airport Influence Area.

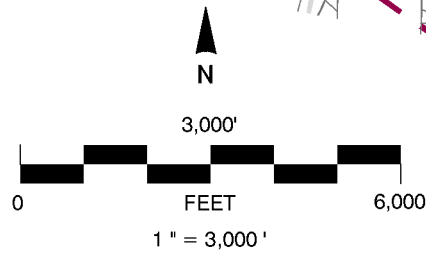


AIRPORT LAND USE COMMISSION
SAN DIEGO COUNTY

**Ramona Airport
Land Use Compatibility Plan
(Amended June 2008)**

Map RMO-1

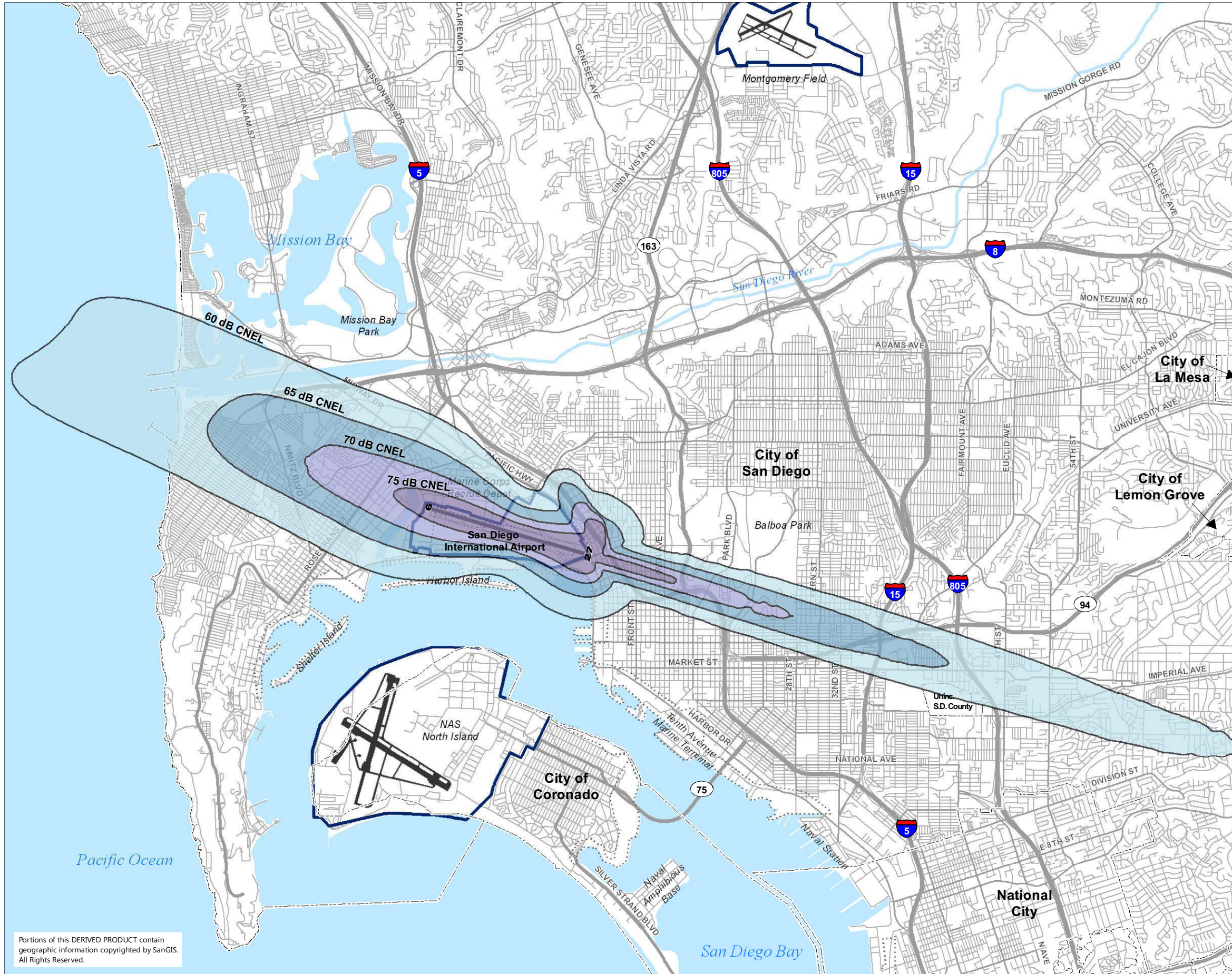
**Compatibility Policy Map:
Noise**



Base Map Sources:

- Parcel Base Map - San Diego Association of Governments (SANDAG), 2004.
- Portions of this DERIVED PRODUCT contain geographic information copyrighted by SanGIS. All Rights Reserved.

X:\19469-00\040011\TECH_Coord\dwg_Layered-Approach-RMO-compatibility-Apr.08.dwg Jun 23, 2008 - 3:04pm



LEGEND

- Major Roads
- Highways
- - - Municipal Boundaries
- ▭ Airport Property Boundary
- ▭ San Diego Unified Port District
- ▭ Planning Jurisdiction Boundary

Forecast Noise Exposure Ranges:

- 60 - 65 dB CNEL
- 65 - 70 dB CNEL
- 70 - 75 dB CNEL
- 75 + dB CNEL



Notes: 1. CNEL = Community Noise Equivalent Level
2. Based on 2030 Forecast Noise Exposure.

Sources: San Diego Geographic Information Source (SanGIS), 2008 and 2011 (municipal boundaries, roads and highways); Harris Miller Miller & Hanson Inc., 2010 (forecast noise exposure ranges).

Prepared by: Ricondo & Associates, Inc., July 2012.

**Exhibit 2-1
Noise Contour Map**

Portions of this DERIVED PRODUCT contain geographic information copyrighted by SanGIS. All Rights Reserved.